

U.S. PUBLIC LAND SURVEY MONUMENT RECORD

Index No. 4-2

State of Wisconsin

County of Forest } ss.

History of original corner establishment:

NONE

I William B. Cochrane, do hereby
 certify that on the 9th day
 of July, 1981, I found ~~xx~~
~~evidence of the~~ established the West 1/16
 corner ~~xx~~ between Sections 30 and 31.
 Township 40, North, Range
14 East, Fourth Principal Meridian,
 as described hereon; and that from this evidence
 I established a new monument and accessories
 as described hereon to perpetuate the original
 location of this corner.

Description of corner evidence found:

NONE

Resident witnesses:

Description of monument and accessories I established to perpetuate the original location of this corner.

I established the corner position at proportionate distance and on line between
 the Southwest Section Corner and the South Quarter Corner. At the corner position,
 set a 2½ inch diameter aluminum pipe monument, 30 inches long, with an aluminum
 cap stamped; T40N, R14E, W1/16, S30, S31, 1981. From which the following bear;

Spruce	24"	S24°E	41.77 feet
Cherry	11"	S56°W	31.02 feet
Steel Sign Post		South	0.50 feet

Dated at Hiles, Wis., this 15th day of February, 1990

Signature William B. Cochrane Title Land Surveyor Registration No. S-1107
 (County Surveyor, Registered Land Surveyor, or other duly authorized official)

Office of Register of Deeds, County of Forest, I hereby certify that the within
 instrument was filed in this office for record on the 20th day of September, 1990
 at 10:45 o'clock A M.

(Register of Deeds)

By Seak Chitto Deputy

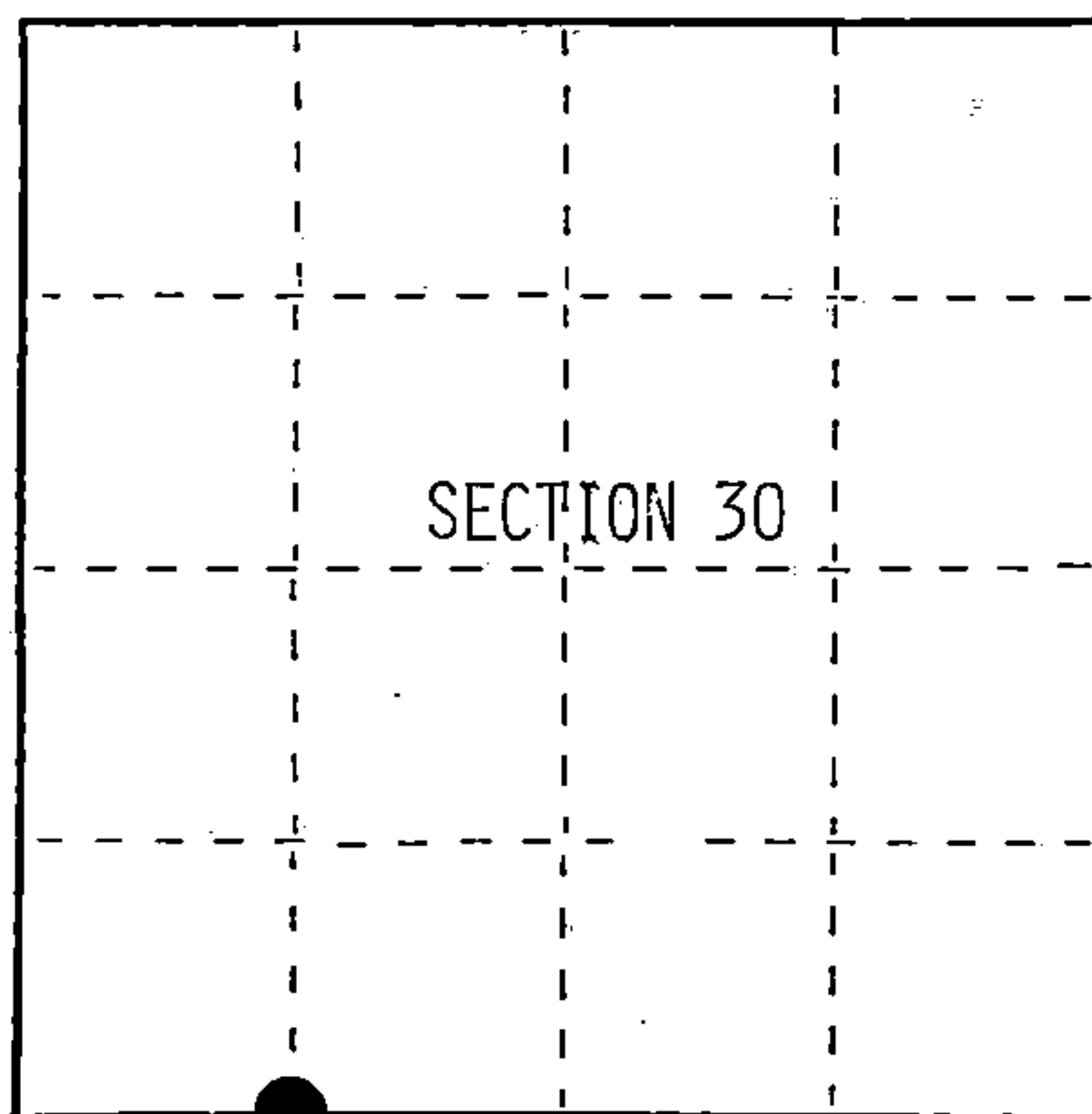
FORM NO. 985-A

H.C. Miller Company
Surveyors' Edition

Stock No. 26273

DOCUMENT NUMBER

140493



● = Corner monument restored.

44014300030

(e) Describe any material discrepancy between the location of the corner as restored or reestablished and the location of that corner as previously restored or reestablished by distance and direction. Show the discrepancy on the plan view drawing under (d), above. Show the distances between the corner as previously restored or reestablished and (1) the corner as restored or reestablished, and (2) to at least 2 of the witness monuments shown on the drawing in (d), above.

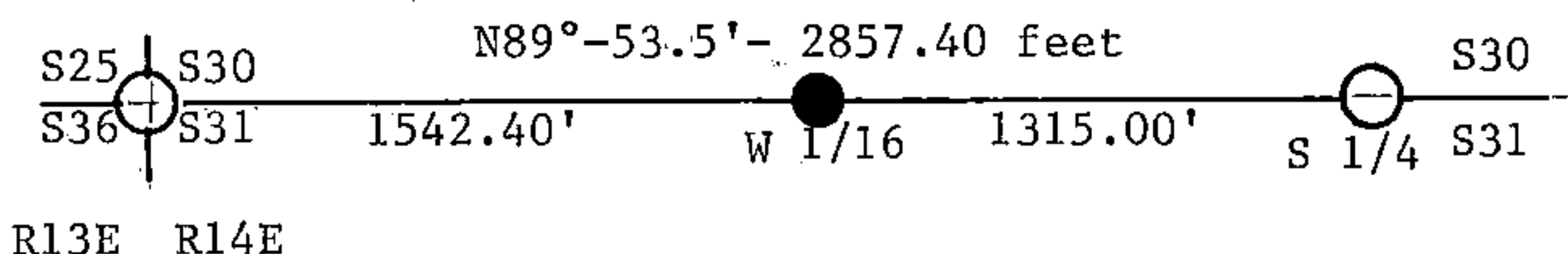
NONE

(f) Was the corner restored through acceptance of (1) an obliterated evidence location, or, (2) a found perpetuated location?

N/A

(g&h) Was the corner reestablished through lost corner proportionate methods? If so, show the method, including the directions and distances to other public land survey corners used as evidence or used for proportioning in determining the corner location?

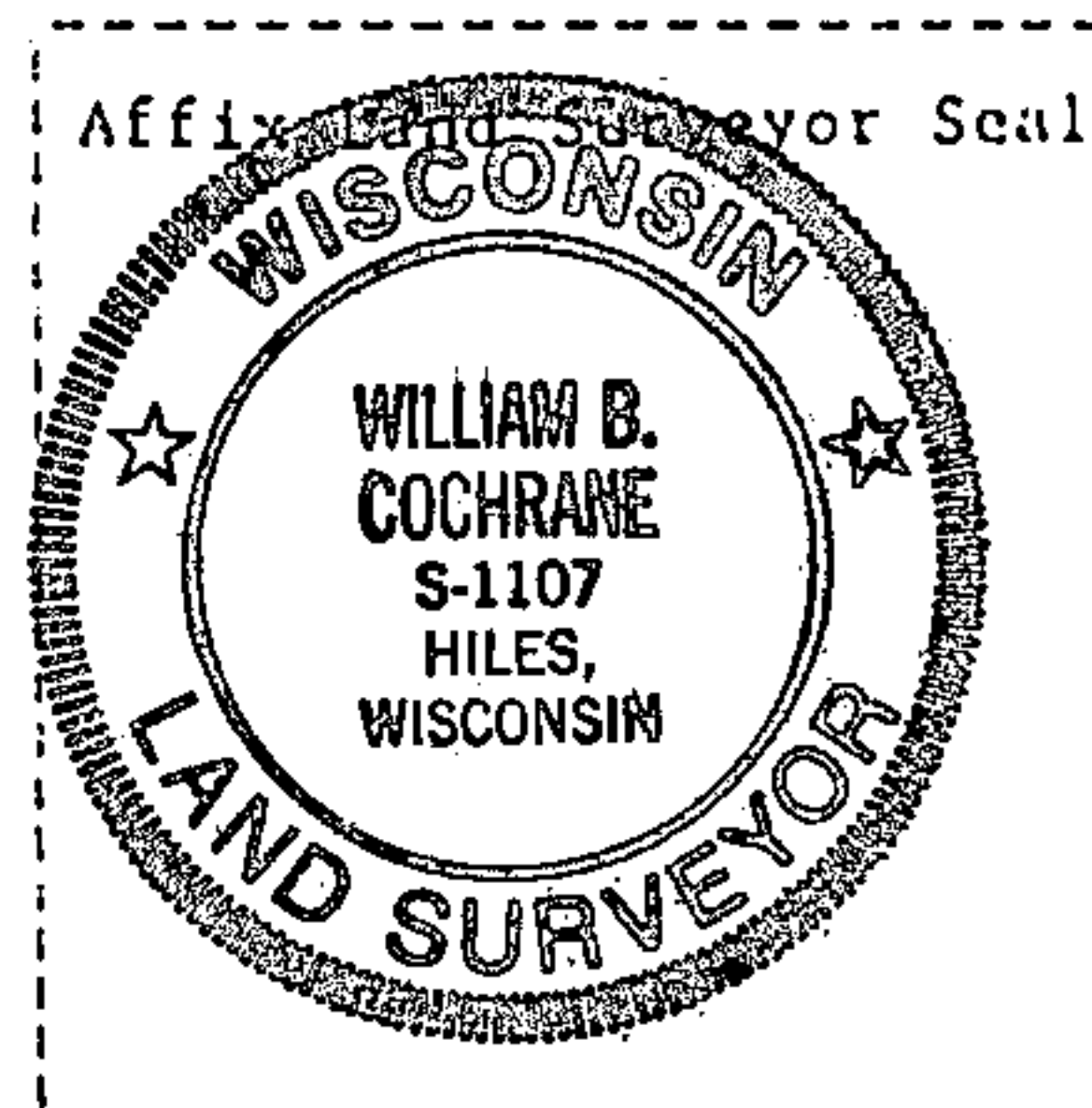
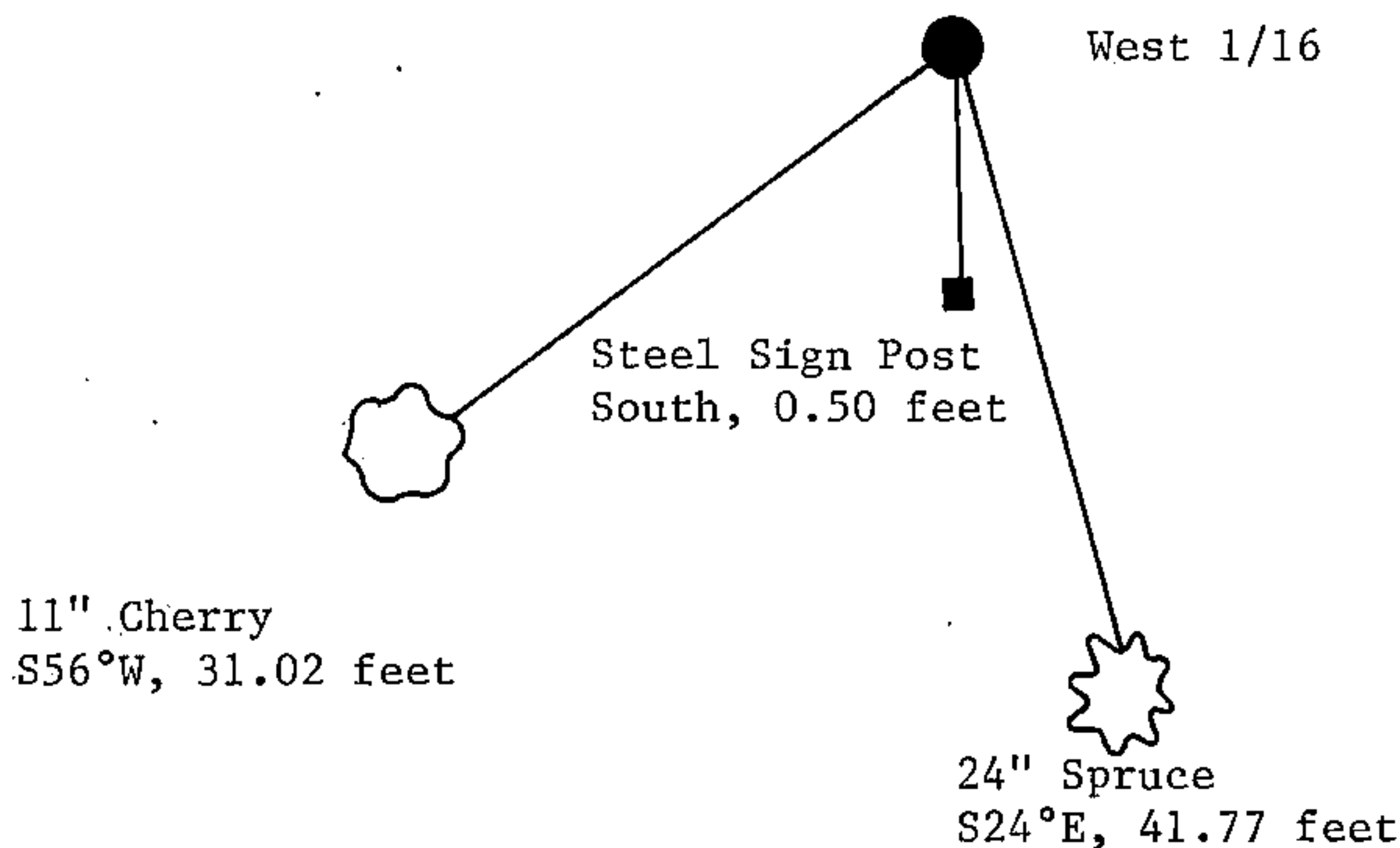
Original 1865 measurement- 83.46 chains



Bearings are referenced to solar observations.



Corners previously monumented and recorded



(i) I, William B. Cochrane
(type or print name) certify that the corner location shown on this record was determined by me or under my direction and control and that this U.S. Public Land Survey Monument Record is correct and complete to the best of my knowledge and belief.

William B. Cochrane Feb. 20, 1990
Signature Date

Survey requested by: Edward A. Gager 9-18-90
District Ranger Date