

136586

U.S. PUBLIC LAND SURVEY MONUMENT RECORD

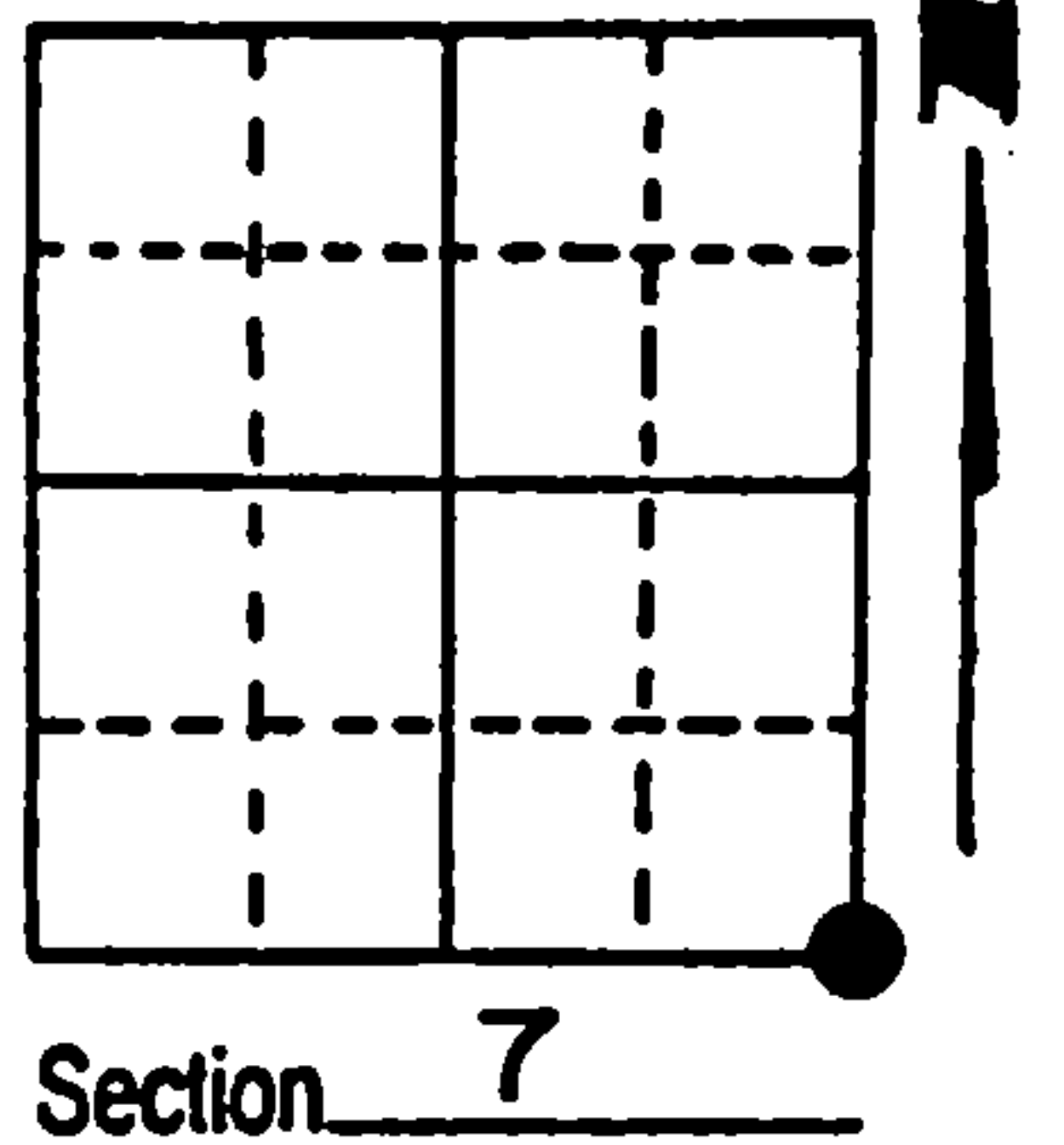
Note: This form is intended and designed to fulfill all requirements of Wisconsin Administrative Code, Chapter A-E 5.02, U.S. Public Land Survey Monument Record (3) (a) (b) (c) (d) (e) (f) (g) (h) (i). An additional sheet may be added if necessary to conform with said requirements.

(a) Corner location: Township 41 North

Range 13 East/West

Town/City/Village Alvin

County Forest



(b) (f) (g) (h) Description of monument found at this corner and if it was accepted, state all evidence (material, testimonial, occupational, plats, records, other monuments) used as a basis for accepting. If not accepted or if nothing was found, state evidence used as basis for establishing location. If reestablished through lost corner proportionate methods, indicate all monuments, distances and directions used to establish.

Found 4" round brass capped concrete monument stamped identifying the corner. The monument was established in the 1942 General Land Office Dependent Resurvey.

BT's found in good condition from 1942 Resurvey:

26" W. Pine N $58\frac{3}{4}^\circ$ W, 190.40 feet.

14" Spruce N 50° E, 88.77 feet.

BT's found in poor condition from 1942 Resurvey:

22" W. Pine S $78\frac{3}{4}^\circ$ E, 172.92 feet.

16" Twin Poplar S $81\frac{1}{4}^\circ$ W, 2.64 feet.

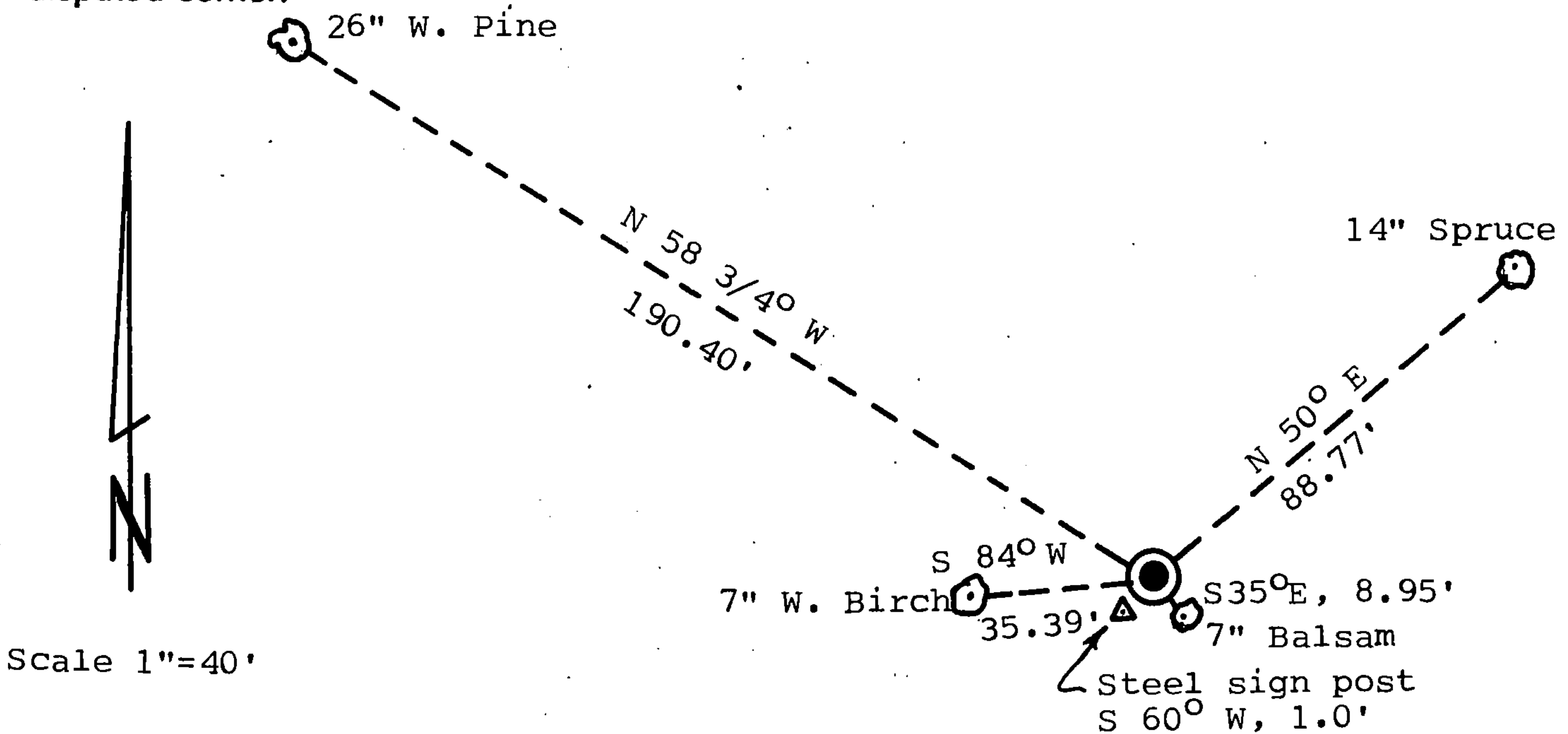
REGISTER'S OFFICE
Forest County, Wis.

Received for record this 9th day
of December A.D., 1988 at

10:10 o'clock A.M. and recorded
in Vol. CORNER RESTORATIONS

page J-5
Paul A. Cheatham
Register of Deeds

(c) (d) (e) Plan view of corner with ties to at least 4 witness monuments. If in disagreement with previously established corner, show the distances between the two corners and also indicate the ties to the disputed corner.



(i) I, Stephen J. Favorite, Registered Land Surveyor #S-1616,

(type or print name) certify that the corner location on this record was determined by me or under my direction and control and that this U.S. Public Land Survey Monument Record is correct and complete to the best of my knowledge and belief.

Stephen J. Favorite
Signature

February 9, 1988

Survey requested by;

Camille Gorn
District Ranger

Date

1/17/88



Index No.

J-5

44113070000

41-13