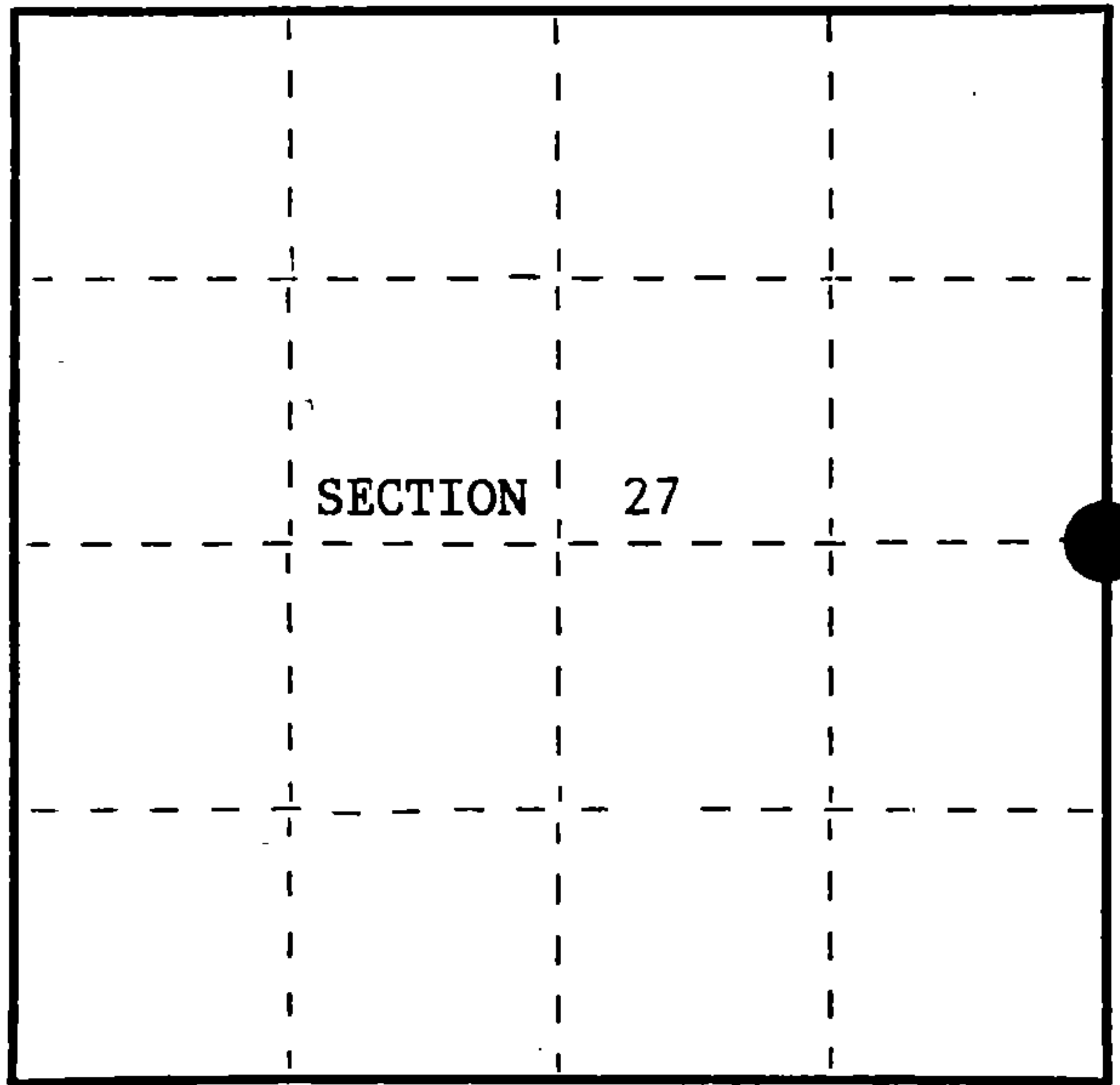


U.S. PUBLIC LAND SURVEY MONUMENT RECORD

Index No. T-17

State of Wisconsin }
County of FOREST } ss.
I John Schulke, do hereby
certify that on the 16th day
of August, 1985, I found
evidence of the Quarter
corner of 26 and 27
Township 41, North, Range
13 East, Fourth Principal Meridian,
as described hereon; and that from this evidence
I established a new monument and accessories
as described hereon to perpetuate the original
location of this corner.

Resident witnesses:



○ = Corner monument restored.

History of original corner establishment:

Original corner was established by Wm. E. Daugherty, Deputy Surveyor
in June 1865 in the survey of the subdivision of T41N, R13 E.

Original Bearing Trees:	Aspen	12"	S64°W	13	1ks.
	Birch	10"	S43°E	28	1ks.

Description of corner evidence found:

Found 2" Dia. iron pipe set by Guy Veal in 1942 with a brass cap
stamped to identify the corner.

Recovered Bearing Trees:	W. Pine Stump	20"	N08°W	21.78 feet
	W. Pine Stump	16"	N57°E	11.22 feet

Description of monument and accessories I established to perpetuate the original location of this corner.

Blazed and scribed the following new corner references:

Red Pine	12"	N87°W	17.84 feet
Red Pine	10"	S29°W	16.31 feet
Red Pine	7"	S69°E	8.21 feet
Red Pine	9"	N50°E	22.46 feet

Steel sign post set 1.75 feet NW.

Dated at Crandon, Wis., this 10th day of October, 1985.

Signature John C. Schulke Title R.L.S. Registration No. S-1665
(County Surveyor, Registered Land Surveyor, or other duly authorized official)

Office of Register of Deeds, County of Forest, I hereby certify that the within
instrument was filed in this office for record on the 21st day of November, 1985
at 1:10 o'clock P. M.

Paul Aschenbrenner
(Register of Deeds)

By Deputy

FORM NO. 985-A
H.C. Miller Company

Stock No. 26273
DOCUMENT NUMBER 129285

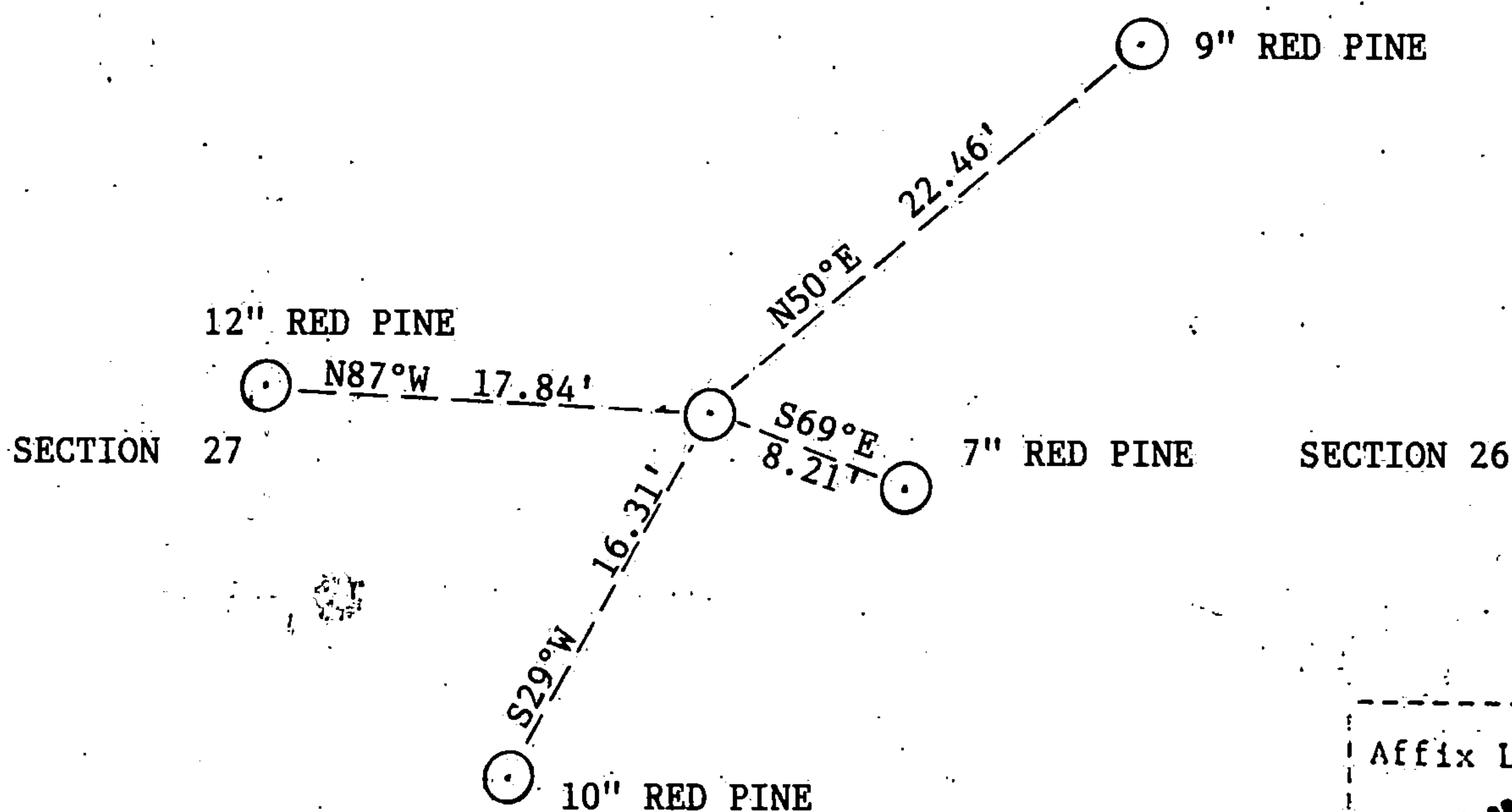
44113272000

(e) Describe any material discrepancy between the location of the corner as restored or reestablished and the location of that corner as previously restored or reestablished by distance and direction. Show the discrepancy on the plan view drawing under (d), above. Show the distances between the corner as previously restored or reestablished and (1) the corner as restored or reestablished, and (2) to at least 2 of the witness monuments shown on the drawing in (d), above.

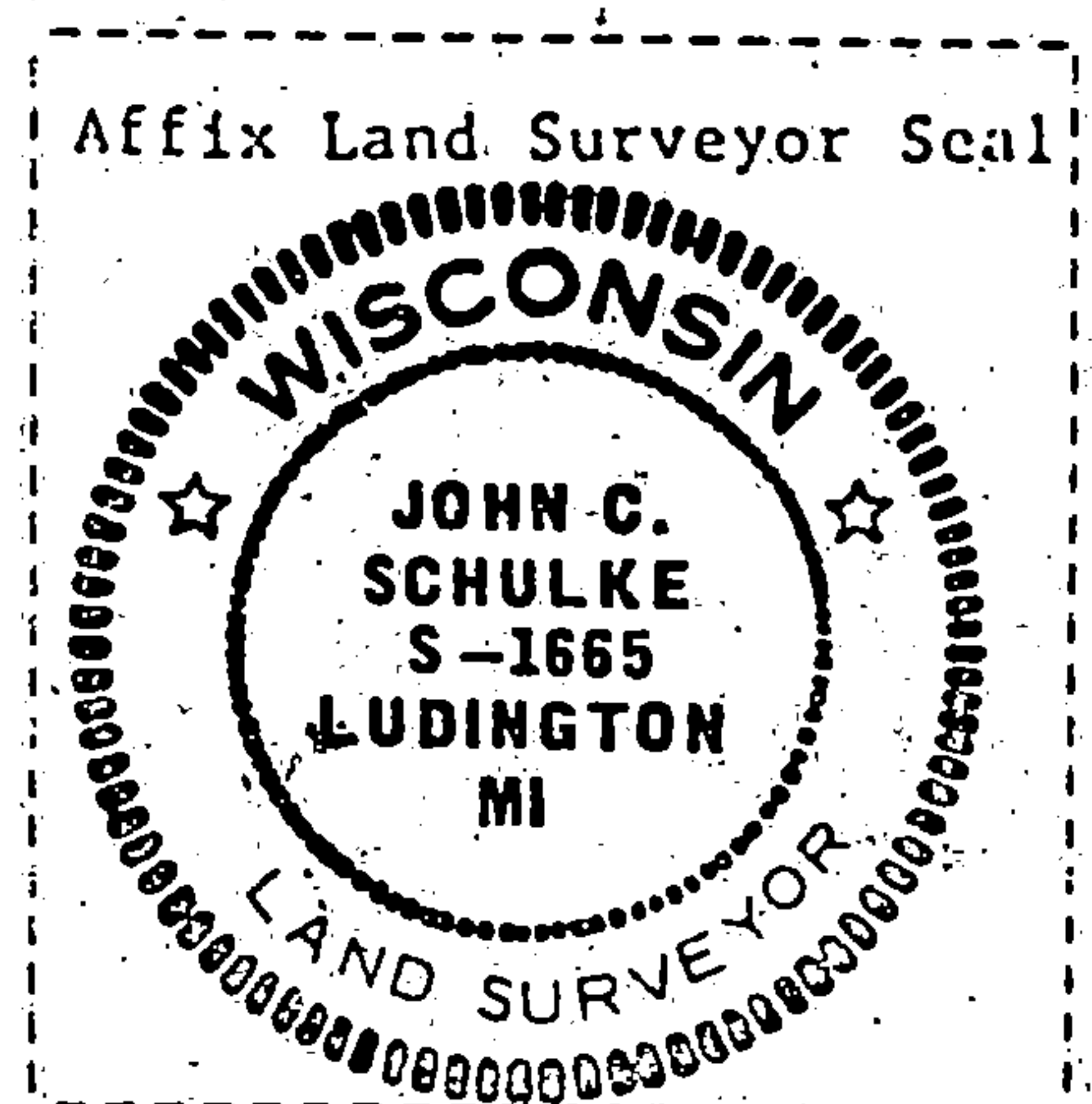
NONE

(f) Was the corner restored through acceptance of (1) an obliterated evidence location, or, (2) a found perpetuated location?

(g&h) Was the corner reestablished through lost corner proportionate methods? If so, show the method, including the directions and distances to other public land survey corners used as evidence or used for proportioning in determining the corner location?



(i) I, John C. Schulke, R.L.S.
(type or print name) certify that the corner location shown on this record was determined by me or under my direction and control and that this U.S. Public Land Survey Monument Record is correct and complete to the best of my knowledge and belief.



John C. Schulke October 10, 1985
Signature Date