

U.S. PUBLIC LAND SURVEY MONUMENT RECORD

Index No. V-13

State of Wisconsin }  
County of FOREST } ss.

I John Schulke, do hereby  
certify that on the 28th day  
of August, 1985, I found  
evidence of the Section  
corner of 27, 28, 33 and 34  
Township 41, North, Range  
13 East, Fourth Principal Meridian,  
as described hereon; and that from this evidence  
I established a new monument and accessories  
as described hereon to perpetuate the original  
location of this corner.

Resident witnesses:

History of original corner establishment:

Original corner was established by Wm. E. Daugherty, Deputy Surveyor in  
June 1865 in the survey of the subdivision of T41N, R13E.

Original Bearing Trees:	Spruce	6"	S23°W	5 lks.
	Spruce	7"	N12°W	6 lks.

Description of corner evidence found:

Found 2" Dia. iron pipe set by Guy Veal in 1942 with a brass cap stamped  
to identify the corner. Decayed wooden post laying beside the monument.

Recovered 1942 Bearing Trees:

Spruce stump	13"	N24°E	8.08 feet
Spruce	8"	S36°E	16.46 feet

Description of monument and accessories I established to perpetuate the original location of this corner.

Blazed, chiseled an "X" on two boulders and scribed the following corner  
references:

Spruce	9"	S35°W	23.62 feet
Light colored	5'HT. 8'W	N36°W	53.70 feet
Boulder			
Dark colored	5'Ht. 12'W	N17°E	42.75 feet
Boulder			

Steel sign post set 2.2 feet Northwest.

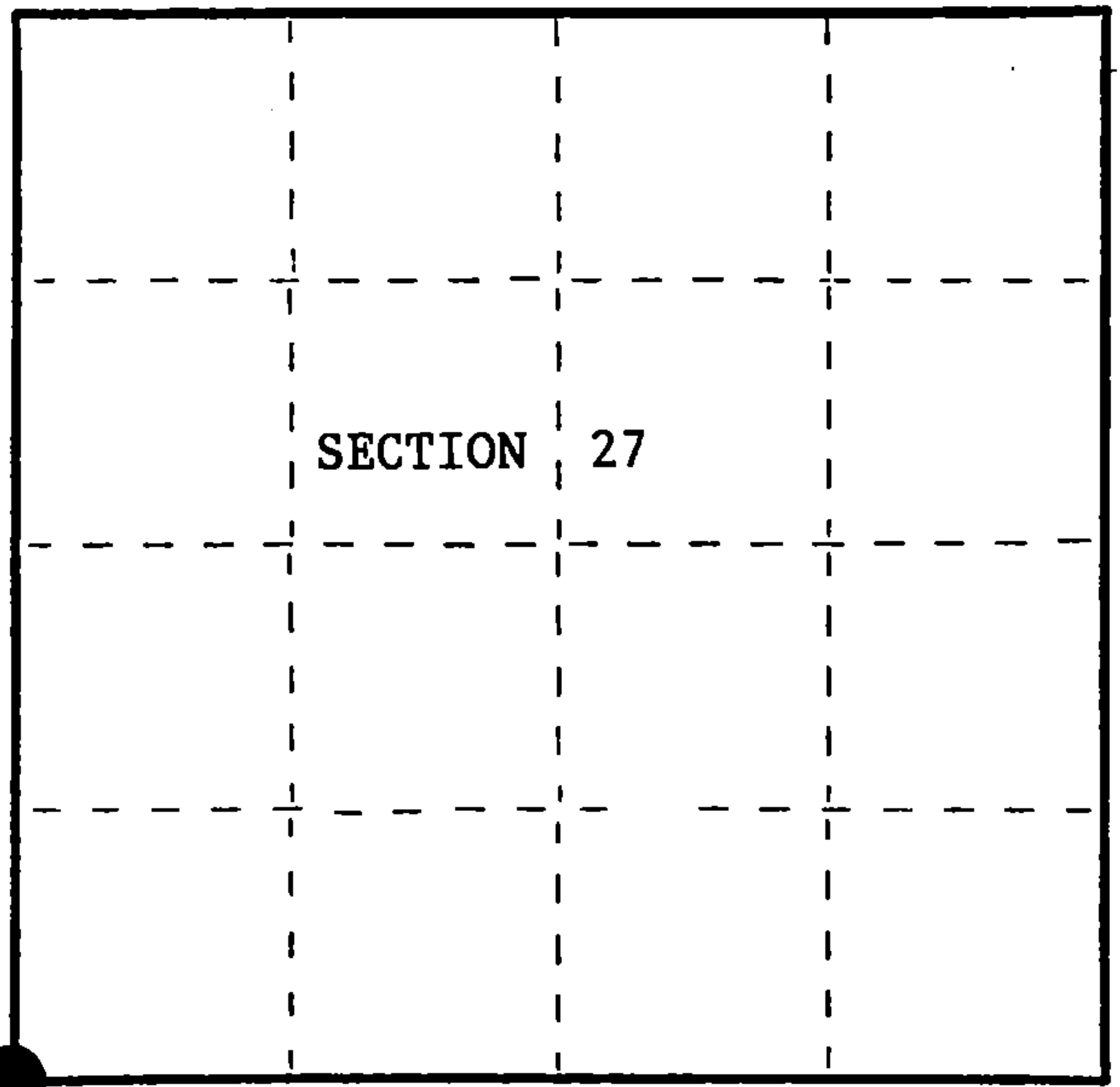
Dated at Grandon, Wis., this 10th day of October, 1985.

Signature John C. Schulke Title R.L.S. Registration No. S-1665  
(County Surveyor, Registered Land Surveyor, or other duly authorized official)

Office of Register of Deeds, County of Forest  
I hereby certify that the within  
instrument was filed in this office for record on the 21st day of November, 1985  
at 1:10 o'clock P. M.

Paul Aschenauer  
(Register of Deeds)

By Deputy



○ = Corner monument restored.

FORM NO. 985-A

H.C. Miller Company

Stock No. 26273

DOCUMENT NUMBER 129287

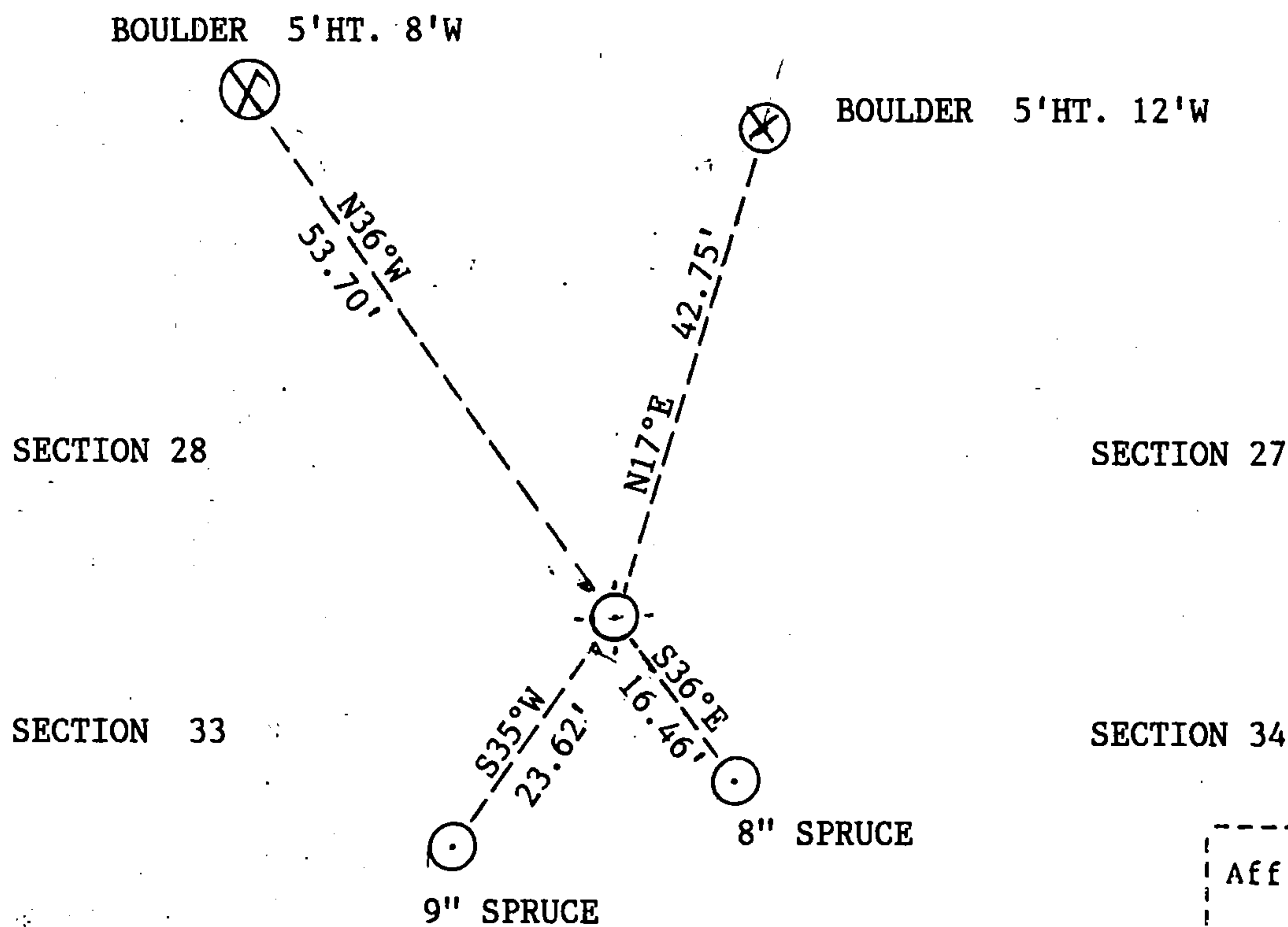
4411328000

(e) Describe any material discrepancy between the location of the corner as restored or reestablished and the location of that corner as previously restored or reestablished by distance and direction. Show the discrepancy on the plan view drawing under (d), above. Show the distances between the corner as previously restored or reestablished and (1) the corner as restored or reestablished, and (2) to at least 2 of the witness monuments shown on the drawing in (d), above.

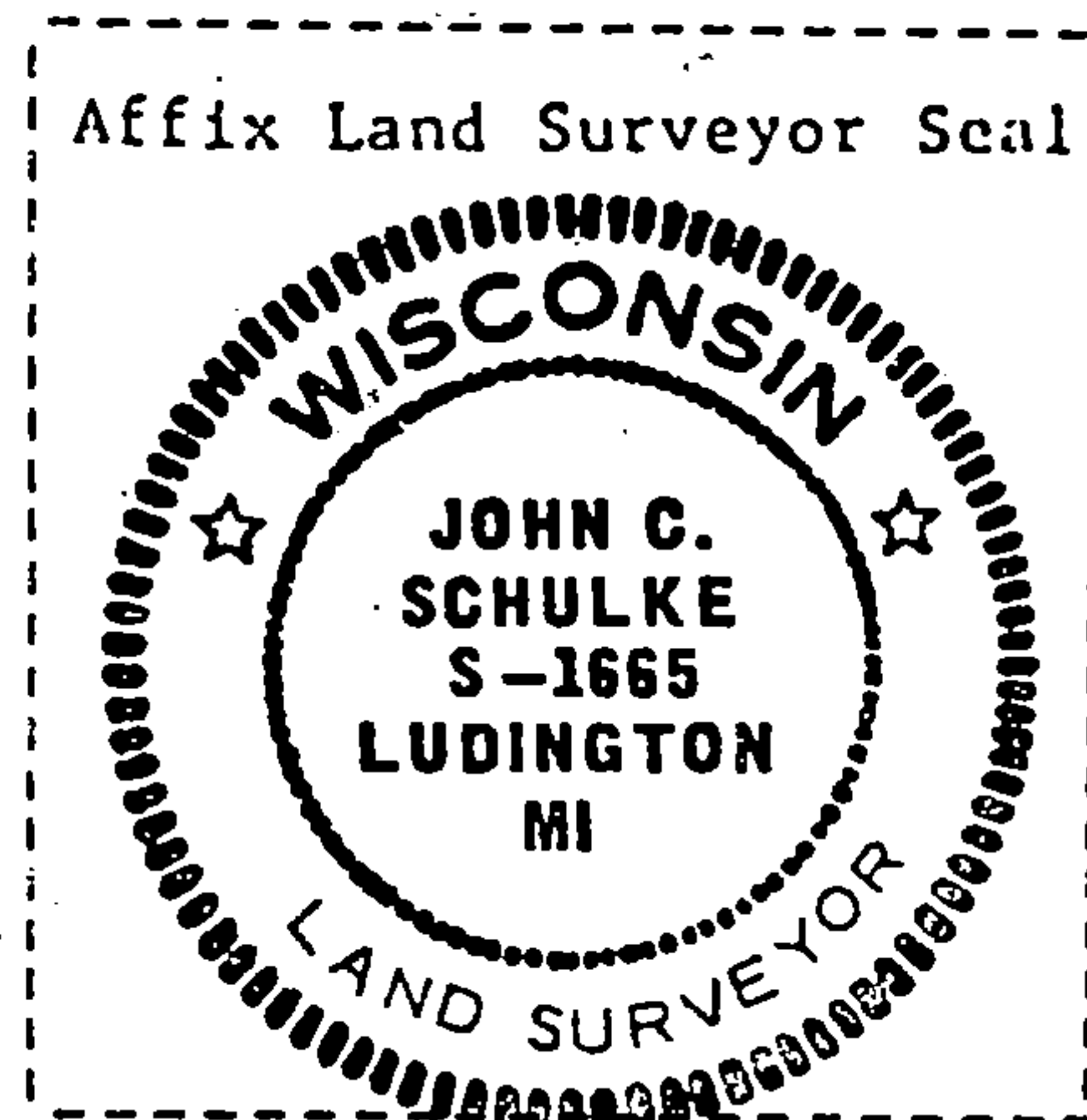
NONE

(f) Was the corner restored through acceptance of (1) an obliterated evidence location, or, (2) a found perpetuated location?

(g&h) Was the corner reestablished through lost corner proportionate methods? If so, show the method, including the directions and distances to other public land survey corners used as evidence or used for proportioning in determining the corner location?



(i) I, John C. Schulke, R.L.S.  
(type or print name) certify that the corner location shown on this record was determined by me or under my direction and control and that this U.S. Public Land Survey Monument Record is correct and complete to the best of my knowledge and belief.



John C. Schulke  
Signature

Oct. 10, 1985  
Date

# CERTIFIED LAND CORNER RESTORATION

State of Wisconsin

County of Forest

ss.

I Jean F. Resvick, do hereby certify that on the 10th day of July, 1975, I found evidence of the Northeast Section corner of Section 33 Township 41 North, Range 13 East, Fourth Principal Meridian, as described hereon; and that from this evidence I established a new monument and accessories as described hereon to perpetuate the original location of this corner:

## Description of original monument and accessories and subsequent restorations:

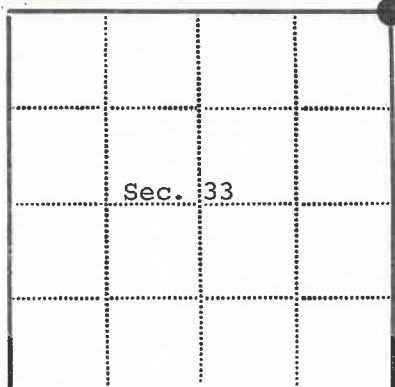
Surveyed in 1865 by Daugherty. Dependent resurvey 1942 by Guy R. Veal. From remains of original bearing trees, set an iron post, 3 ft. long, 2 ins. diameter, 22 inches in the ground to rock, with brass cap marked: T41N, R13E, S28, S27, S33, S34, 1942 Spruce stump, 12 ins., S23W, 5 Lks. Rotted Spruce stump, N12W, 6 Lks. Spruce 7, N22E, 13 Lks. Spruce 5, S32°15'E, 25 Lks. Spruce 6, S45°45'W, 26 Lks. Spruce 6, N64W, 6 1/2 Lks. Local Cedar post, S6°30'W, 3 Lks.

## Description of corner evidence found:

Concrete post with brass cap stamped: T41N, R13E, S28, S27, S33, S34, 1942 Spruce 9, N22E, 13 Lks. Spruce 7, S32E, 25 Lks. Spruce stump, S46W, 26 Lks. Spruce, fallen, scribed, N64W, 6.5 Lks.

## Description of monument and accessories I established to perpetuate the location of this corner:

Blazed and scribed the following new bearing trees. Spruce 8, S13W, 27.8 Lks. Spruce 7, N83W, 35.2 Lks. Set steel sign post 0.5 ft. Southwest of monument.



Resident witnesses

Dated at Rhinelander Wisconsin, this 14 day of Jan., 1976.

Signature Jean F. Resvick Title Land Surveyor  
(County Surveyor, Registered Land Surveyor, or other duly authorized official)

Surveyors Registration No. S-802

DOCUMENT NUMBER

109614

Office of Register of Deeds County of Forest

I hereby certify that the within instrument was filed in this office for record on the 2nd day of July 1976, and was filed in Book No. Page No. of County Records.

Signature Eugene Stutzman Title Register of Deeds

Township 41 North, Range 13 East, Section 33, Index No. V-13, Page No.

4413280000

V13