

# U.S. PUBLIC LAND SURVEY MONUMENT RECORD

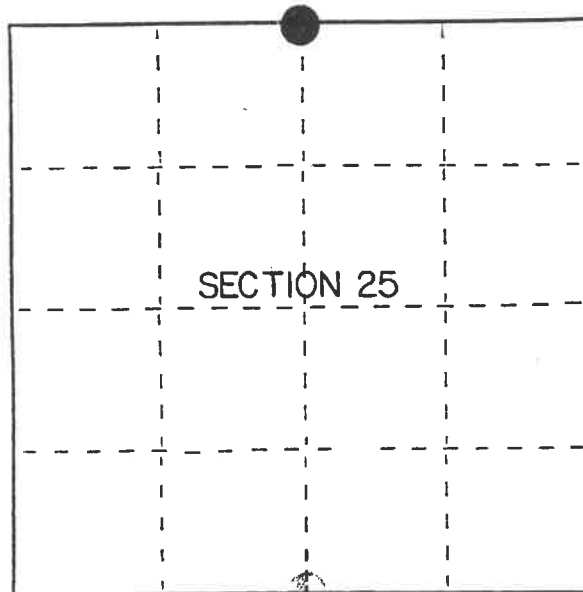
Index No. **R-23**

State of Wisconsin }  
County of Forest } ss.

I, Gary L. Pisoni, do hereby certify that on the 21st day of August, 1991, I found evidence of the North Quarter corner of Section 25 Township 41, North, Range 14 East, Fourth Principal Meridian, as described hereon; and that from this evidence I established a new monument and accessories as described hereon to perpetuate the original location of this corner.

Resident witnesses:

\_\_\_\_\_  
\_\_\_\_\_  
\_\_\_\_\_



● = Corner monument restored.

## History of original corner establishment:

Original Government Survey in 1865 by William E. Daugherty. West corrected between Sections 24 and 25, at 39.77 chs., set Quarter Section Post to Sections 24 and 25, from which the following bear;

Fir	8"	N20°E	7 lks.
Fir	6"	S65°W	5 lks.

## Description of corner evidence found:

No original corner evidence was recovered.

I restored the corner position at proportionate distance and on line between the Northwest and Northeast Section Corners of Section 25.

## Description of monument and accessories I established to perpetuate the original location of this corner.

At the corner position, set a 2½ inch diameter aluminum pipe monument, 3 feet long, 3 inches above the ground, with an aluminum cap stamped; T41N R14 E, 1/4, S24, S25, 1991, S-1634. From which the following new blazed and scribed bearing trees bear; (measurements taken to a nail in side of tree)

S. Maple	13"	N55°E	69.85 feet
S. Maple	12"	S76°E	45.16 feet
S. Maple	7"	S27°E	48.08 feet
S. Maple	5"	N73°W	4.81 feet
Steel Sign Post		N45°E	0.70 feet

Monument is located along West side of a North-South woods road and also along edge of tree line.

Dated at Iron River, MI, ~~WIS~~, this 16th day of February, 1992.

Signature Gary L. Pisoni Title Land Surveyor Registration No S-1634  
(County Surveyor, Registered Land Surveyor, or other duly authorized official)

Office of Register of Deeds, County of Forest, I hereby certify that the within instrument was filed in this office for record on the 10th day of March, 1993 at 10:45 o'clock P. M.

Paul Ascherbrenner  
(Register of Deeds)

By \_\_\_\_\_ Deputy

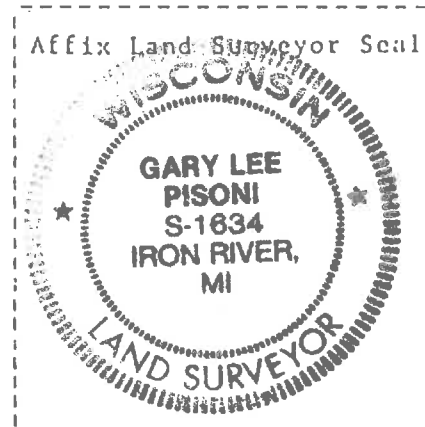
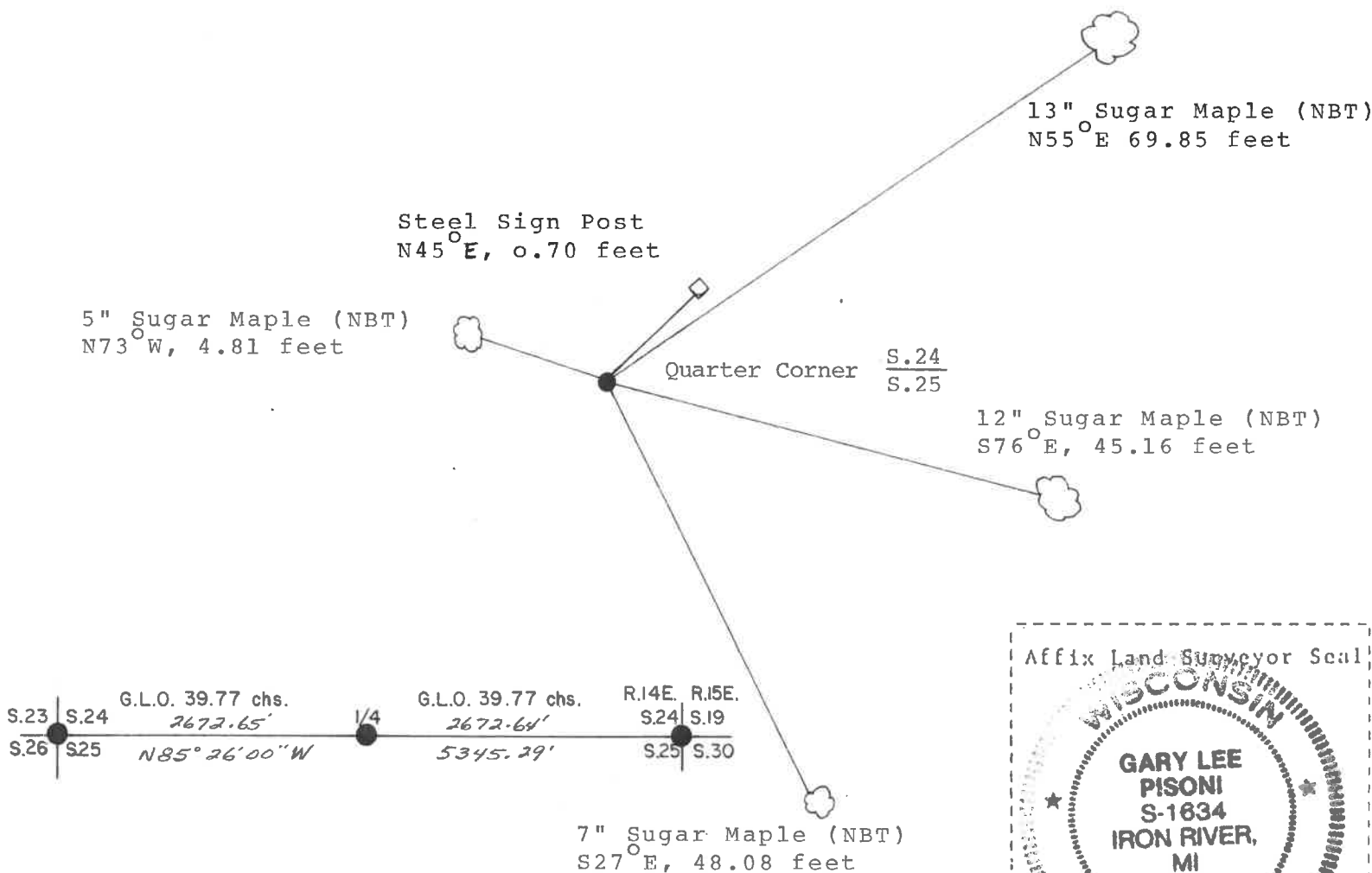
ii) Describe any material discrepancy between the location of the corner as restored or reestablished and the location of that corner as previously restored or reestablished by distance and direction. Show the discrepancy on the plan view drawing under (d), above. Show the distances between the corner as previously restored or reestablished and (1) the corner as restored or reestablished, and (2) to at least 2 of the witness monuments shown on the drawing in (d), above.

See drawing below.

(f) Was the corner restored through acceptance of (1) an obliterated evidence location, or, (2) a found perpetuated location?

Restored through lost corner proportionate methods.

(g&h) Was the corner reestablished through lost corner proportionate methods? If so, show the method, including the directions and distances to other public land survey corners used as evidence or used for proportioning in determining the corner location?  
Reestablished through lost corner proportionate methods.



(i) I, Gary L. Pisoni  
(Type or print name) certify that the corner location shown on this record was determined by me or under my direction and control and that this U.S. Public Land Survey Monument Record is correct and complete to the best of my knowledge and belief.

Gary L. Pisoni March 13<sup>th</sup> 1992  
Signature Date

Survey requested by; [Signature] 10/12/92  
District Ranger Date