

## U.S. PUBLIC LAND SURVEY MONUMENT RECORD

Index No. V-15

State of Wisconsin }  
 County of Forest } ss.

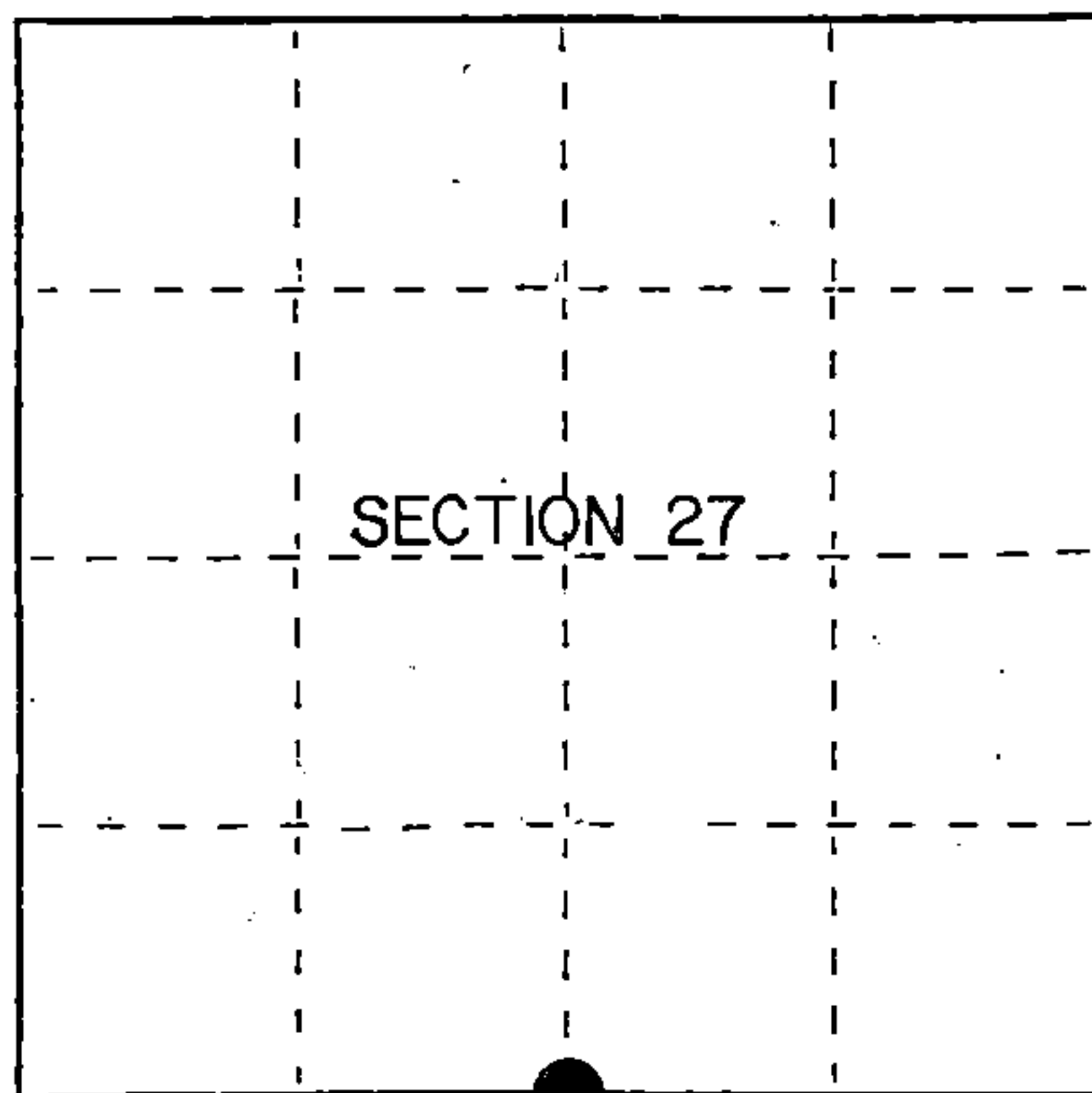
I, Gary L. Pisoni, do hereby  
 certify that on the 24th day  
 of July, 1991, I found  
 evidence of the South Quarter  
 corner of Section 27  
 Township 41, North, Range  
14 East, Fourth Principal Meridian,  
 as described hereon; and that from this evidence  
 I established a new monument and accessories  
 as described hereon to perpetuate the original  
 location of this corner.

Resident witnesses:

.....

.....

.....



● = Corner monument restored.

## History of original corner establishment:

Original Government Survey in 1865 by William E. Daugherty. West corrected between  
 Sections 27 and 34, at 40.16 chs., set Quarter Section Post to Sections 27 and 34,  
 from which the following bear;

Spruce	10"	S40°W	22 lks.
Sugar	10"	N31°E	20 lks.

## Description of corner evidence found:

No original corner evidence was recovered.

I restored the corner position at proportionate distance and on line between the  
 Southeast and Southwest Section Corners of Section 27.

## Description of monument and accessories I established to perpetuate the original location of this corner.

At the corner position, set a 2½ inch diameter aluminum pipe monument, 3 feet long,  
 3 inches above the ground, with an aluminum cap stamped; T41N R14E, 1/4, S27, S34,  
 1991, S-1634. From which the following new blazed and scribed bearing trees bear;  
 (measurements taken to a nail in side of tree)

W. Spruce	14"	N37°W	25.77 feet
S. Maple	13"	N74°E	20.33 feet
S. Maple	11"	S60°E	22.51 feet
S. Maple	10"	S54°W	19.65 feet
Steel Sign Post		North	0.70 feet

Dated at Iron River, MI, ~~Wis~~, this 16th day of February, 1992

Signature Gary L. Pisoni Title Land Surveyor Registration No S-1634  
 (County Surveyor, Registered Land Surveyor, or other duly authorized official)

Office of Register of Deeds, County of Forest, I hereby certify that the within  
 instrument was filed in this office for record on the 10th day of March, 1993  
 at 10:45 o'clock A. M.

Paul Ascheprenner  
 (Register of Deeds)

By..... Deputy

FORM NO. 985-A

H.C. Miller Company

Stock No. 26273

146882

44114270020

(d) Describe any material discrepancy between the location of the corner as restored or reestablished and the location of that corner as previously restored or reestablished by distance and direction. Show the discrepancy on the plan view drawing under (d), above. Show the distances between the corner as previously restored or reestablished and (1) the corner as restored or reestablished, and (2) to at least 2 of the witness monuments shown on the drawing in (d), above.

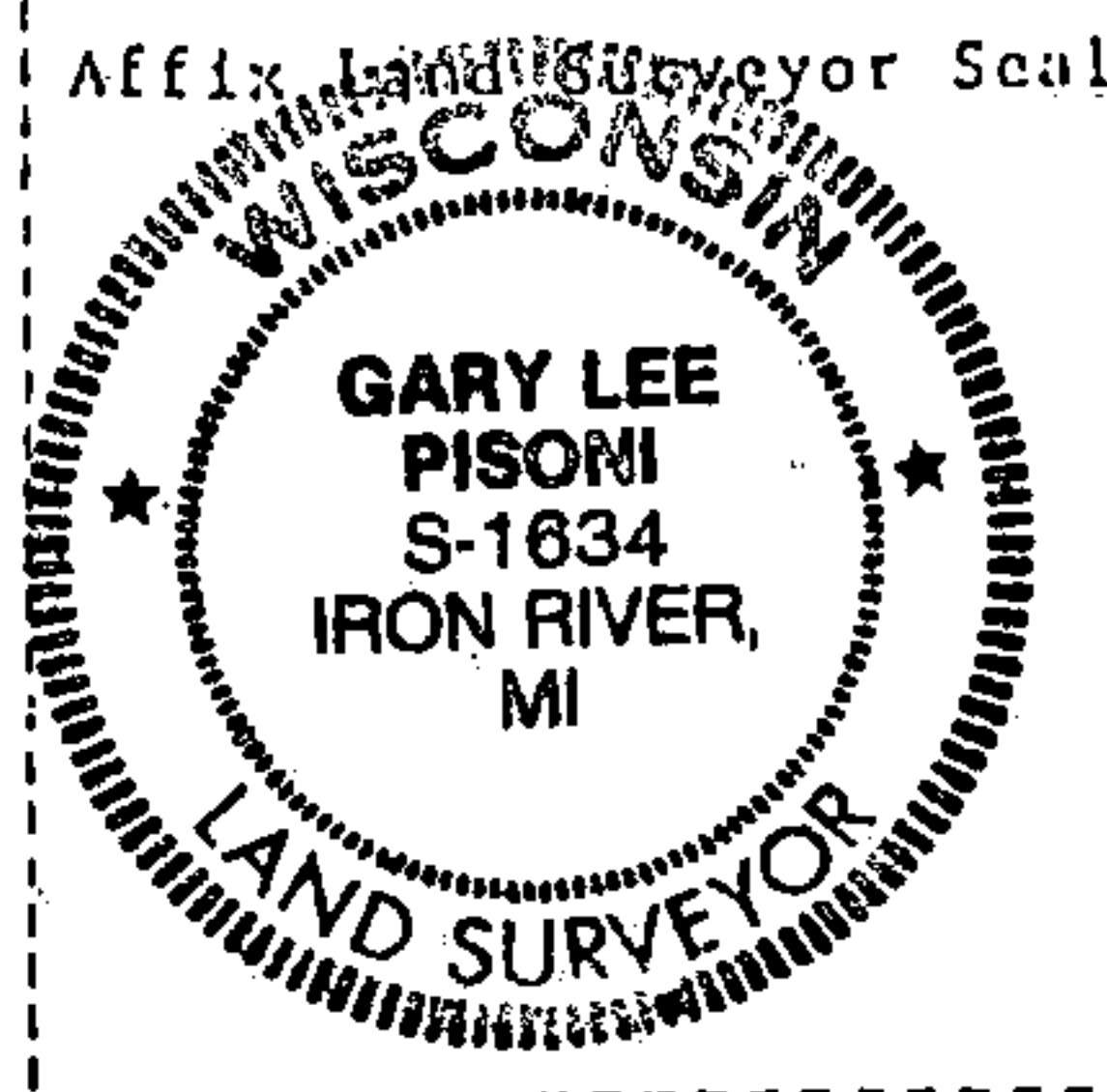
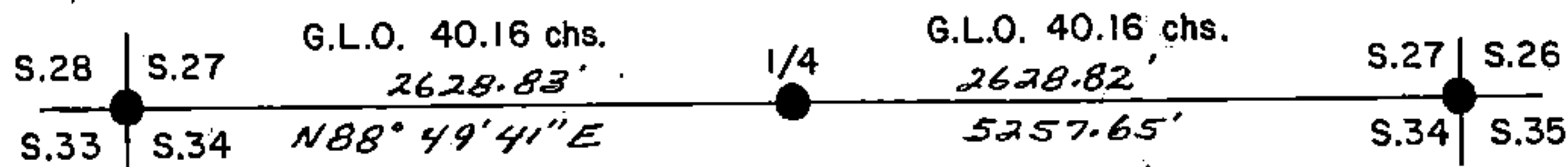
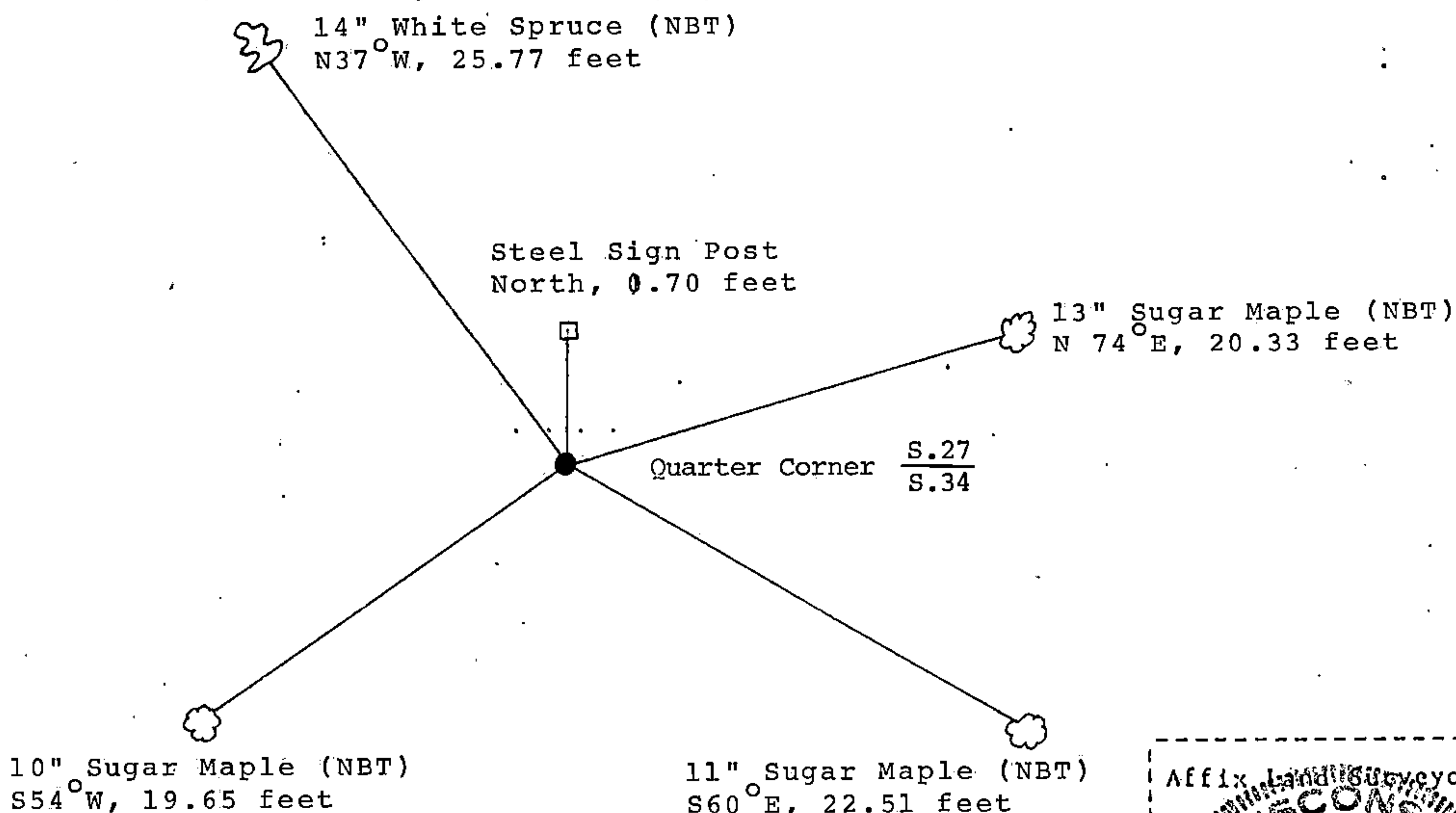
See drawing below.

(f) Was the corner restored through acceptance of (1) an obliterated evidence location, or, (2) a found perpetuated location?

Restored through lost corner proportionate methods.

(g&h) Was the corner reestablished through lost corner proportionate methods? If so, show the method, including the directions and distances to other public land survey corners used as evidence or used for proportioning in determining the corner location?

Reestablished through lost corner proportionate methods.



(i) I, Gary L. Pisoni  
[type or print name] certify that the corner location shown on this record was determined by me or under my direction and control and that this U.S. Public Land Survey Monument Record is correct and complete to the best of my knowledge and belief.

Gary L. Pisoni March 13<sup>th</sup> 1992  
Signature Date

Survey requested by: [Signature] 10/2/92  
District Ranger Date