

Stock No. 26273

DOCUMENT NUMBER 132467

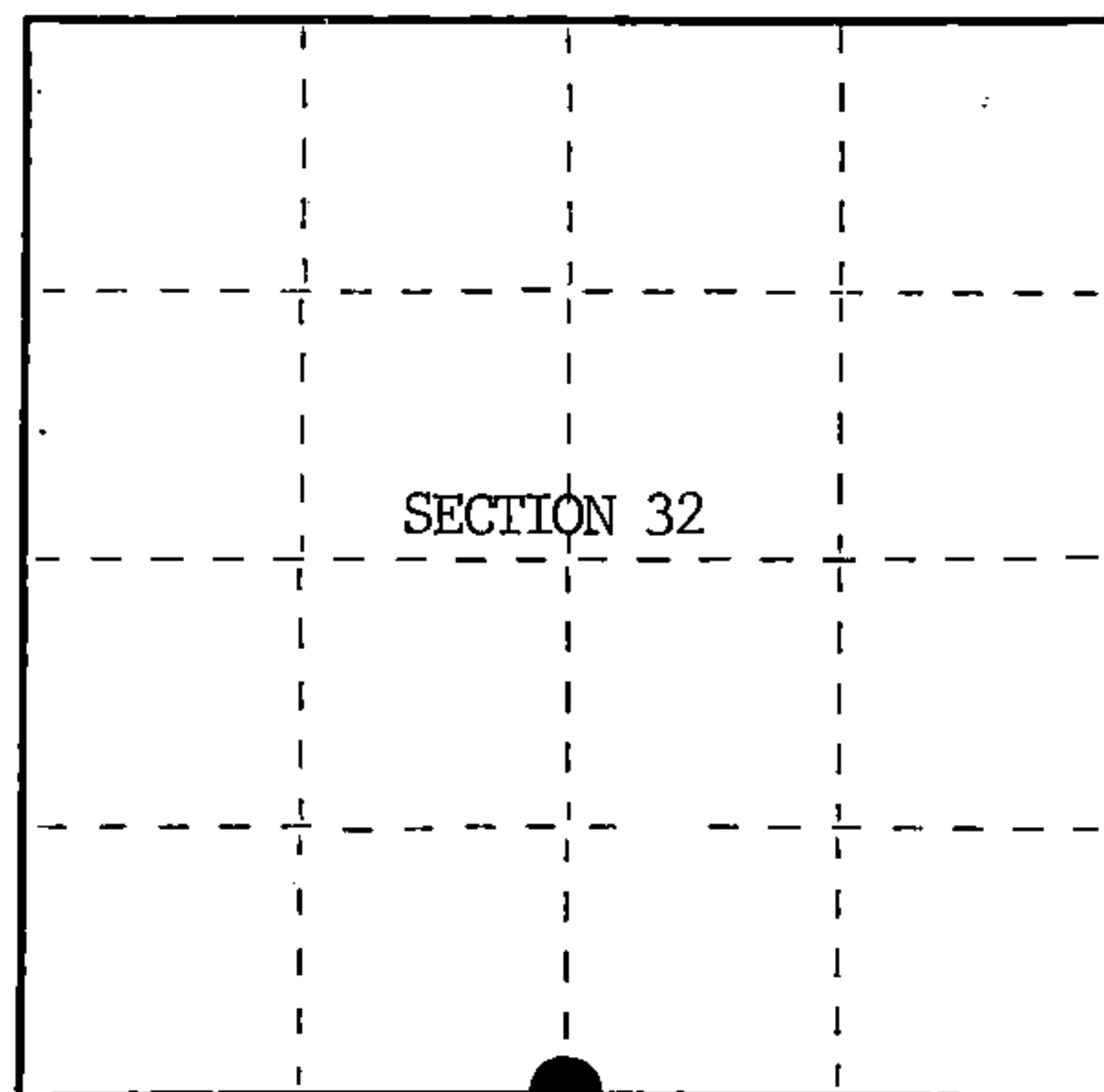
U.S. PUBLIC LAND SURVEY MONUMENT RECORD

Index No. Z-7

State of Wisconsin }
 County of Forest } ss.

I, William B. Cochrane, do hereby
 certify that on the 23rd day
 of July, 1986, I found
 evidence of the Standard Quarter Section
 corner of Section 32
Township 41, North, Range
14 East, Fourth Principal Meridian,
 as described hereon; and that from this evidence
 I established a new monument and accessories
 as described hereon to perpetuate the original
 location of this corner.

Resident witnesses:

David BrownellTony Tillman

○ = Corner monument restored.

History of original corner establishment:

Original Government Survey in 1858 by Artemas Curtis. Dependent Resurvey in 1945
 by Hugh B. Crawford. East on the South side of Section 32, 39.65 chains, at proportionate
 distance, set an iron post, 3 feet long, 2 inches in dia., 27 inches in the ground, with
 a brass cap mkd; SC, 1/4, S32, 1945. From which the following bear;

Cedar	6"	S79°30'E	162 lks. (106.92 feet)
Balsam	8"	S 9°15'E	56 lks. (36.96 feet)

Description of corner evidence found:

Found monument as described and in place, from which the following bear;

Balsam	14"	S 9°15'E	36.96 feet
Cedar (Stump)		S79°30'E	106.92 feet

Description of monument and accessories I established to perpetuate the original location of this corner.

Blazed and scribed a new bearing tree;

R. Pine	10"	N22°E	31.35 feet
Steel Sign Post		South	1.00 feet

Dated at Hiles, Wis., this 25th day of September, 1986.

Signature William B. Cochrane Title Land Surveyor Registration No. S-1107
 (County Surveyor, Registered Land Surveyor, or other duly authorized official)

Office of Register of Deeds, County of Forest, I hereby certify that the within
 instrument was filed in this office for record on the 11th day of March, 1987
 at 3:30 o'clock P. M.

Paul Aschenbrenner
 (Register of Deeds)

By _____ Deputy

44114320020

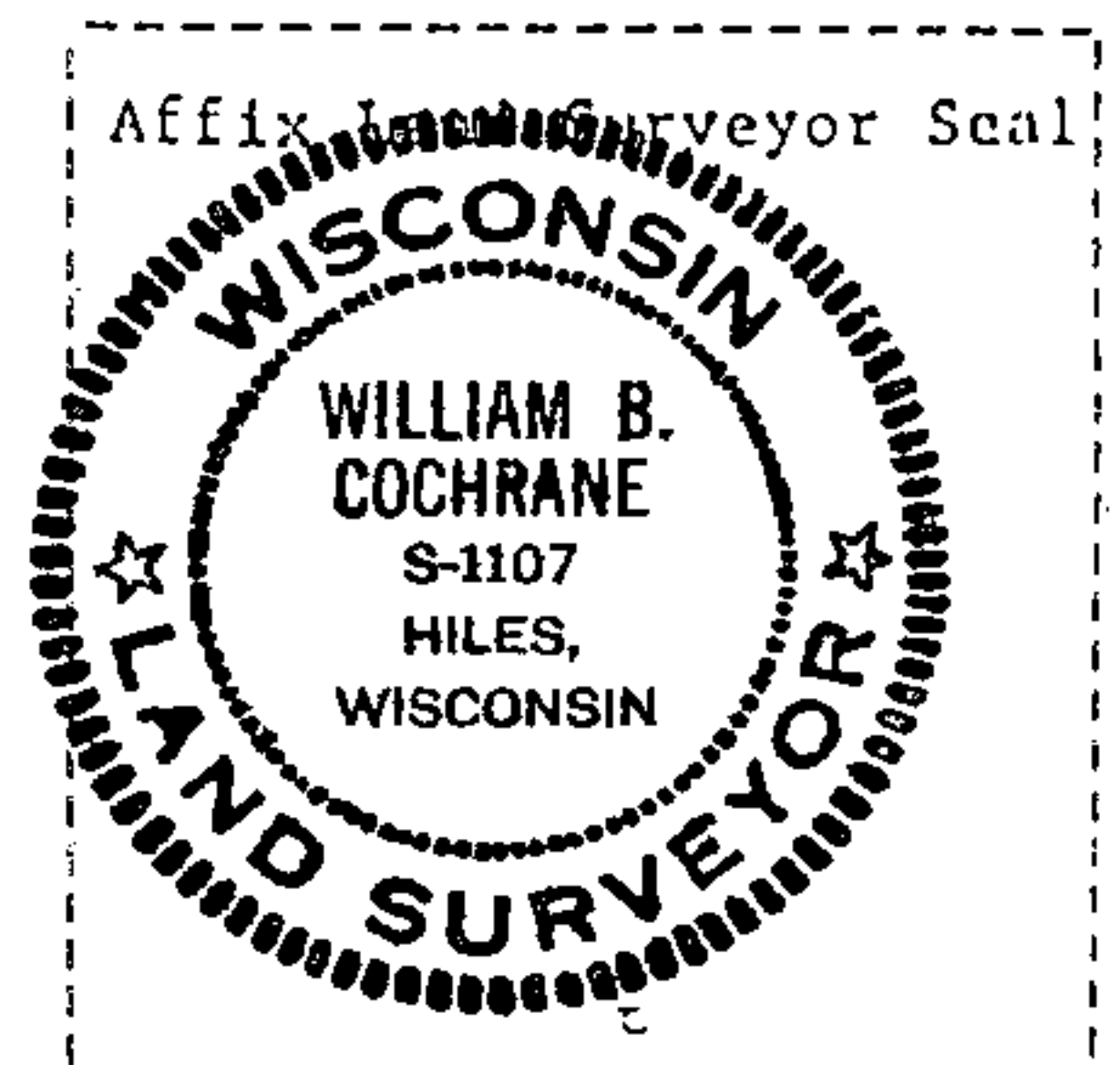
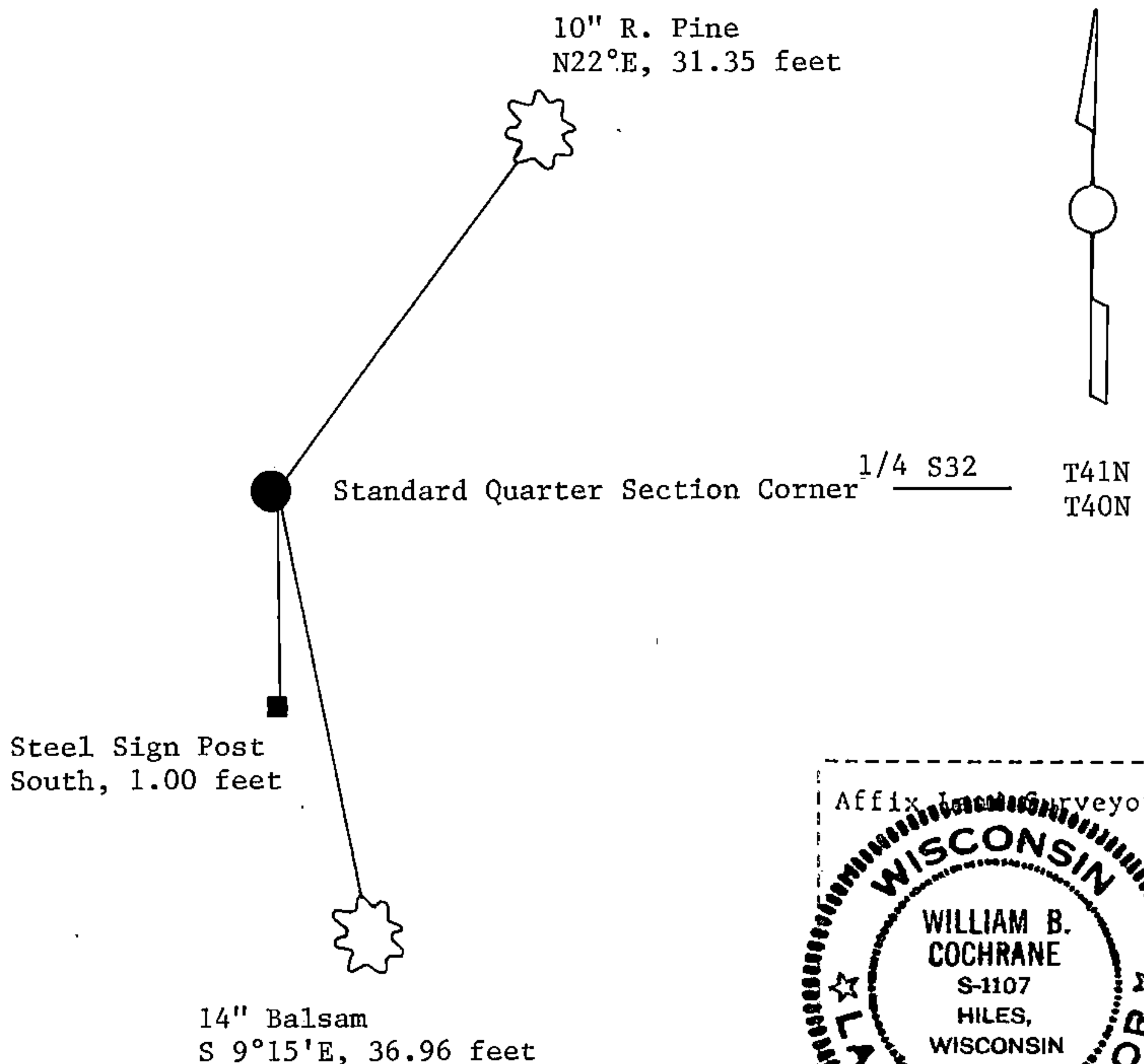
(e) Describe any material discrepancy between the location of the corner as restored or reestablished and the location of that corner as previously restored or reestablished by distance and direction. Show the discrepancy on the plan view drawing under (d), above. Show the distances between the corner as previously restored or reestablished and (1) the corner as restored or reestablished, and (2) to at least 2 of the witness monuments shown on the drawing in (d), above.

See drawing below.

(f) Was the corner restored through acceptance of (1) an obliterated evidence location, or, (2) a found perpetuated location?

Restored through acceptance of a found perpetuated location.

(g&h) Was the corner reestablished through lost corner proportionate methods? If so, show the method, including the directions and distances to other public land survey corners used as evidence or used for proportioning in determining the corner location?



(i) I, William B. Cochrane
(type or print name) certify that the corner location shown on this record was determined by me or under my direction and control and that this U.S. Public Land Survey Monument Record is correct and complete to the best of my knowledge and belief.

William B. Cochrane October 14, 1986
Signature Date

Certificate ready for filing: [Signature] 3-9-87
District Ranger Date