

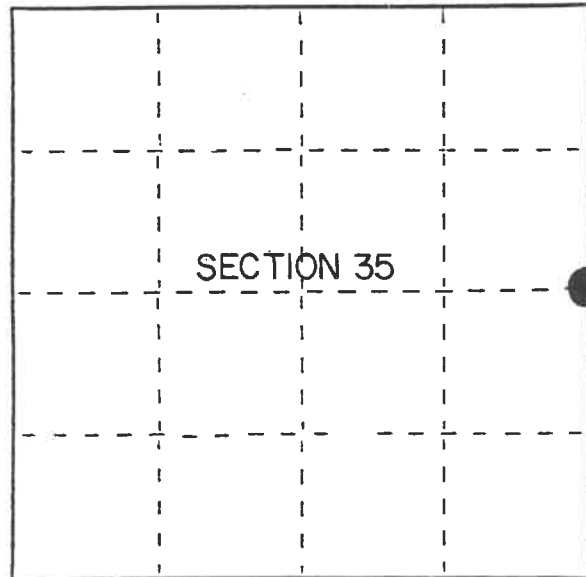
U.S. PUBLIC LAND SURVEY MONUMENT RECORD

Index No. X-21

State of Wisconsin }
County of Forest } ss.

I, Gary L. Pisoni, do hereby
certify that on the 4th day
of September, 1991, I found
evidence of the East Quarter
corner of Section 35
Township 41, North, Range
14 East, Fourth Principal Meridian,
as described hereon; and that from this evidence
I established a new monument and accessories
as described hereon to perpetuate the original
location of this corner.

Resident witnesses:



● = Corner monument restored.

History of original corner establishment:

Original Government Survey in 1865 by William E. Daugherty. At 40.00 chs. set Quarter
Section Post to Sections 35 and 36, from which the following bear;

Fir	6"	N34°E	73 links
Fir	5"	N14°W	52 links

Description of corner evidence found:

No original corner evidence was recovered.

The corner position was restored at mid-point and on line between the Northeast and
Southeast Section corners of Section 35.

Description of monument and accessories I established to perpetuate the original location of this corner.
At the corner position, set a 2½" diameter aluminum pipe monument, 3 feet long,
3 inches above the ground, with an aluminum cap stamped; T41N R14E, 1/4, S35, S36,
1991, S-1634. From which the following new blazed and scribed bearing trees bear;
(Measurements are taken to a nail in side of tree)

S. Maple	8"	N18°E	45.78 feet
S. Maple	7"	S21°E	21.33 feet
S. Maple	11"	S68°W	11.19 feet
S. Maple	7"	N20°W	34.87 feet
Steel Sign Post		West	0.69 feet

Dated at Iron River, MI, this 16th day of February, 1992

Signature Gary L. Pisoni Title Land Surveyor Registration No S-1634
(County Surveyor, Registered Land Surveyor, or other duly authorized official)

Office of Register of Deeds, County of Forest, I hereby certify that the within
instrument was filed in this office for record on the 10th day of March, 1993
at 10:45 o'clock A. M.

Douglas Aschenbrenner
(Register of Deeds)

By _____ Deputy

e) Describe any material discrepancy between the location of the corner as restored or reestablished and the location of that corner as previously restored or reestablished by distance and direction. Show the discrepancy on the plan view drawing under (d), above. Show the distances between the corner as previously restored or reestablished and (1) the corner as restored or reestablished, and (2) to at least 2 of the witness monuments shown on the drawing in (d), above.

See drawing below.

(f) Was the corner restored through acceptance of (1) an obliterated evidence location, or, (2) a found perpetuated location?

Restored through lost corner proportionate methods.

(g&h) Was the corner reestablished through lost corner proportionate methods? If so, show the method, including the directions and distances to other public land survey corners used as evidence or used for proportioning in determining the corner location?

Lost corner proportionate methods. 8" Sugar Maple (NBT)
N18° E, 45.78 feet

7" Sugar Maple (NBT)
N20° W, 34.87 feet

Steel Sign Post
West, 0.69 feet

Quarter Corner S.35 | S.36

11" Sugar Maple (NBT)
S68° W, 11.19 feet

7" Sugar Maple (NBT)
S21° E, 21.33 feet

S.26 S.25
S.35 S.36

G.L.O. 40.00 chs.
2778.72'

5557.44'

1/4

G.L.O. 40.00 chs.
2778.72'

N00°03'24"W

T.41N. S.35 S.36
T.40N.



(i) I, Gary L. Pisoni
(Type or print name) certify that the corner location shown
on this record was determined by me or under my direction and
control and that this U.S. Public Land Survey Monument Record is
correct and complete to the best of my knowledge and belief.

Signature

Date

Survey requested by;

District Ranger

Date