

4310824 0000 2014

# LANGLADE COUNTY U.S. PUBLIC LAND SURVEY MONUMENT LOCATION RECORD

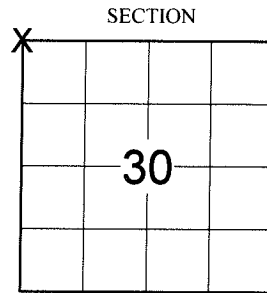
SECTION 30  
TOWNSHIP 31 N  
RANGE 9 E

R-1  
NO.

LANDMARK       BENCHMARK  
CORNER IDENTITY: NW CORNER SEC. 30 (BERNTSEN SNM-1 NAIL)  
LANGLADE COUNTY COORDINATE: N: 343410.4250  
E: 549719.4210  
ELEVATION-(FEET): \_\_\_\_\_ DATUM: \_\_\_\_\_  
WEATHER: CLEAR AND SUNNY  
DATE OF SURVEY: 8/12/2014 TEMPERATURE: 75 °F  
SURVEY PARTY: CHRIS FIERI & IAN FIELD

FOUND   
SET   
RESET   
RE-TIED

ACKLEY  
CITY, VILLAGE, TOWN



LOCATION  
(Indicated By X)



## BASIS FOR MONUMENT LOCATION:

(DESCRIBE METHOD OF SURVEY AND CORNER AUTHENTICATION)

3/29/1990 - William Kelly S-1098 recovered an existing stone monument at this corner position. Set a P.K. Nail over the stone and made four (4) reference monuments to perpetuate the corner location.

5/10/1994 - Barrientos and Associates visited this corner and recovered the P.K. Nail of record along with all four (4) witness monuments from the previous tiesheet. They set four (4) Berntsen 3" x 30" magnetic aluminum monuments to comply with DOT specs.

8/12/2014 - I recovered a Berntsen SNM-1 Nail at the corner location. I also recovered all eight (8) reference monuments from the previous tiesheet. Returned to the corner after the re-surfacing of State Highway "64" and set a Berntsen SNM-1 Nail at the corner location.

CERTIFIED CORRECT:

*Christopher L. Fieri*

CHRISTOPHER L. FIERI S-2954  
Registered Land Surveyor

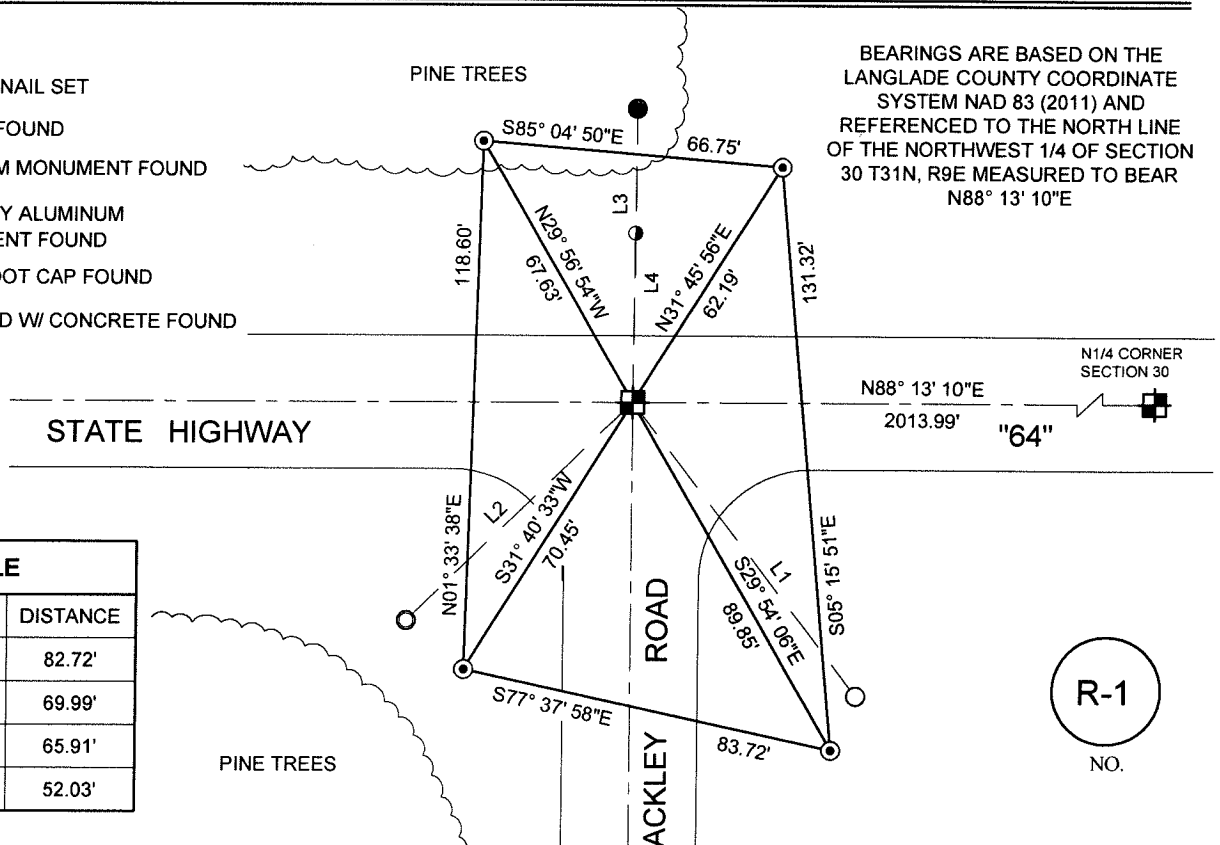
DATE: 10-9-2014

FIELD BOOK NO. S-12 PAGE NO. 62

COMPANY RIVERSIDE LAND SURVEYING LLC

## TIE SKETCH:

- BERNTSEN SNM-1 NAIL SET
- 1" O.D. IRON PIPE FOUND
- WISDOT ALUMINUM MONUMENT FOUND
- LANGLADE COUNTY ALUMINUM WITNESS MONUMENT FOUND
- 3/4" IRON BAR W/ DOT CAP FOUND
- 2" IRON PIPE FILLED W/ CONCRETE FOUND



LINE TABLE		
LINE #	BEARING	DISTANCE
L1	S37° 24' 24"E	82.72'
L2	S32° 28' 53"W	69.99'
L3	N00° 18' 50"E	65.91'
L4	N00° 29' 16"E	52.03'

R-1  
NO.