

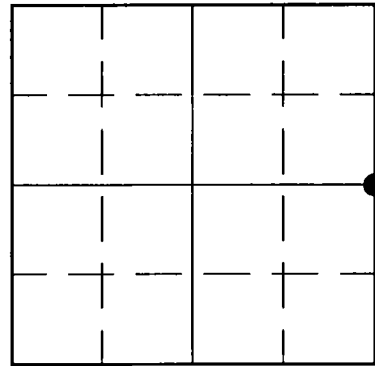
3314072000

U.S. PUBLIC LAND SURVEY MONUMENT RECORD

HISTORY OF ORIGINAL CORNER ESTABLISHMENT AND SUBSEQUENT RESTORATION AND DESCRIPTION OF ANY RECORD, MONUMENT OCCUPATIONAL, TESTIMONIAL OR OTHER EVIDENCE CONSIDERED:

THE ORIGINAL QUARTER CORNER WAS ESTABLISHED IN 1865 BY JAMES NOWLIN. ORIGINAL BEARING TREES: SPRUCE 8" N62W 10LKS., SPRUCE 8" S6E 15LKS. 1/4/2000 BECKY BAHAR AND GERRY BAHAR SEARCHED FOR CORNER ALONG OLD FENCELINE IN TAG ALDER SWAMP, FOUND NOTHING. WE SET A 2" X 30" BRASS CAPPED LANGLADE CO. MONUMENT ON THE FENCELINE AT A SPLIT DISTANCE BETWEEN THE SE COR OF SEC 7 AND THE NE COR OF SEC 7.

● = LOCATION OF CORNER



SECTION 7

TOWNSHIP 33 NORTH, RANGE 14 EAST

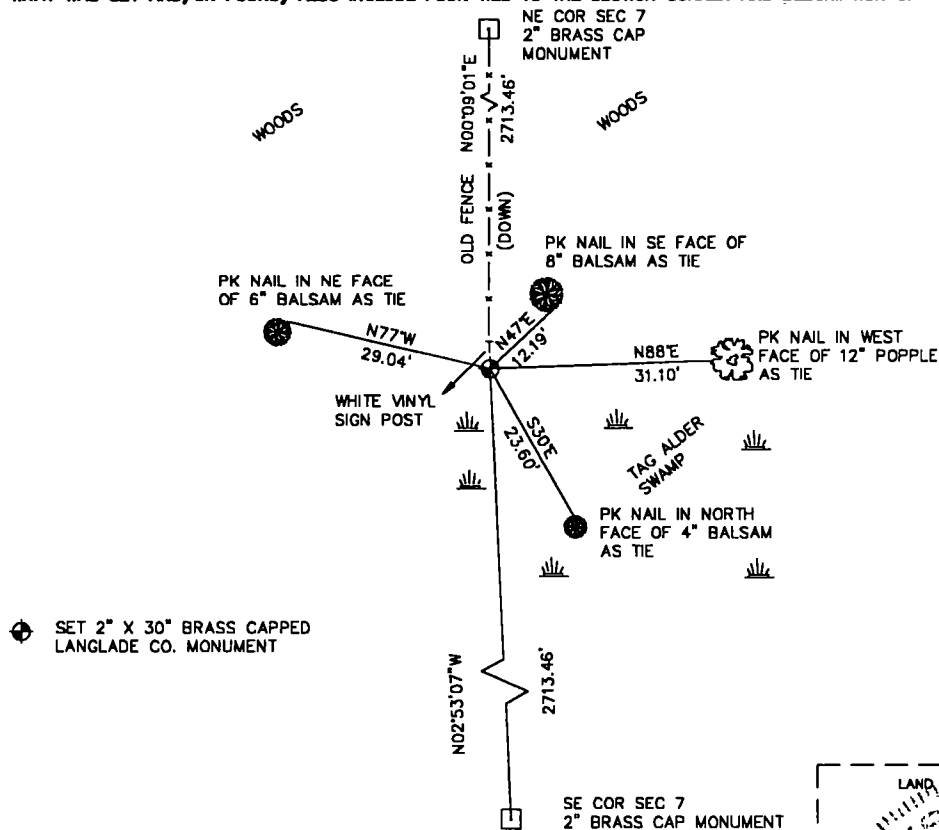
TOWN OF WOLF RIVER

LANGLADE COUNTY, WISCONSIN

CORNER WAS: (CHECK ALL THAT APPLY)

- RESTORED THROUGH ACCEPTANCE OF AN OBLITERATED EVIDENCE LOCATION
- RESTORED THROUGH ACCEPTANCE OF A FOUND PERPETUATED LOCATION
- CONSIDERED A LOST CORNER AND REESTABLISHED THROUGH LOST CORNER PROPORTIONATE METHODS (INCLUDE A PLAN VIEW DRAWING SHOWING DISTANCES AND DIRECTIONS TO OTHER PUBLIC LAND SURVEY CORNERS USED FOR PROPORTIONING AND DETERMINING THE CORNER LOCATION)
- RESTORED OR REESTABLISHED IN A LOCATION THAT DIFFERS FROM A PREVIOUS RESTORATION OR REESTABLISHMENT (INCLUDE A PLAN VIEW DRAWING AND INDICATE WHAT WAS SET AND/OR FOUND)
- CHECK IF THERE IS ADDITIONAL INFORMATION ON BACK

DESCRIBE THE MONUMENT AND ACCESSORIES USED TO PERPETUATE THE LOCATION OF THE CORNER. (INCLUDE A PLAN VIEW DRAWING AND INDICATE WHAT WAS SET AND/OR FOUND) ALSO INCLUDE FOUR TIES TO THE SECTION CORNER AND DESCRIPTION OF THE TIES.



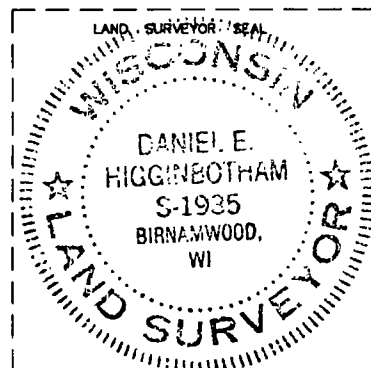
● SET 2" X 30" BRASS CAPPED LANGLADE CO. MONUMENT

DANIEL E. HIGGINBOTHAM

(type or print name) CERTIFY THAT THE CORNER LOCATION SHOWN ON THIS RECORD WAS DETERMINED BY ME OR UNDER MY DIRECTION AND CONTROL AND THAT THIS U.S. PUBLIC LAND SURVEY MONUMENT RECORD IS CORRECT AND COMPLETE TO THE BEST OF MY KNOWLEDGE AND BELIEF.

Daniel E. Higginbotham
SIGNATURE

2-3-2000
DATE



INDEX NO. 33-14 6-5