

# LANGLADE COUNTY U.S. PUBLIC LAND CORNER RESTORATION

The South Quarter corner of Section 32, T. 33 N., R. 14 E., Langlade County, WI.

Corner was: (check all that apply)

3314320020

- Restored through acceptance of an obliterated evidence location.
- Restored through acceptance of a found perpetuated location
- Determined to be lost and re-established through proportionate methods.  
Show bearings and distances to PLSS corners used for proportioning, and show original distances).
- Restored/recovered/re-established in a location that differs from a previously established position  
(Show difference in plan view below).
- Check here if addition information is shown on the reverse side of this form.

**Describe record evidence, recovered physical evidence, occupational evidence, testimonial evidence and all other evidence considered in the recovery/restoration of the corner.**

The original corner was established in 1857 by Alfred Millard. Original bearing trees: spruce, 12", N28°E, 13 links, and a white pine, 12", S 20° W, 37 links. No other information exists in county files on this corner.

11/06/00 Dave Tlusty, Roy Zubroud, searched for corner which now falls in backwaters of a beaver pond. Several pine stumps exist, but nothing with hack marks or old blaze holes. Corner deemed lost and re-set by single proportionate measure between the SE corner of Section 32 and a original survey line tree (now stump) to the West. Didn't monument 1/4 corner, but set a witness corner/meander corner on the section line, 120.00' west of the 1/4 corner.

**Physical description of the monument set:**

I set a 2" x 30" iron pipe with brass cap for the witness corner/meander corner.

**Describe the accessories used to perpetuate the corner. Include a plan view drawing and accessories found/set. Describe measuring point on bearing trees. Show any topographic features that would aid in future recovery of the corner.**

### LEGEND

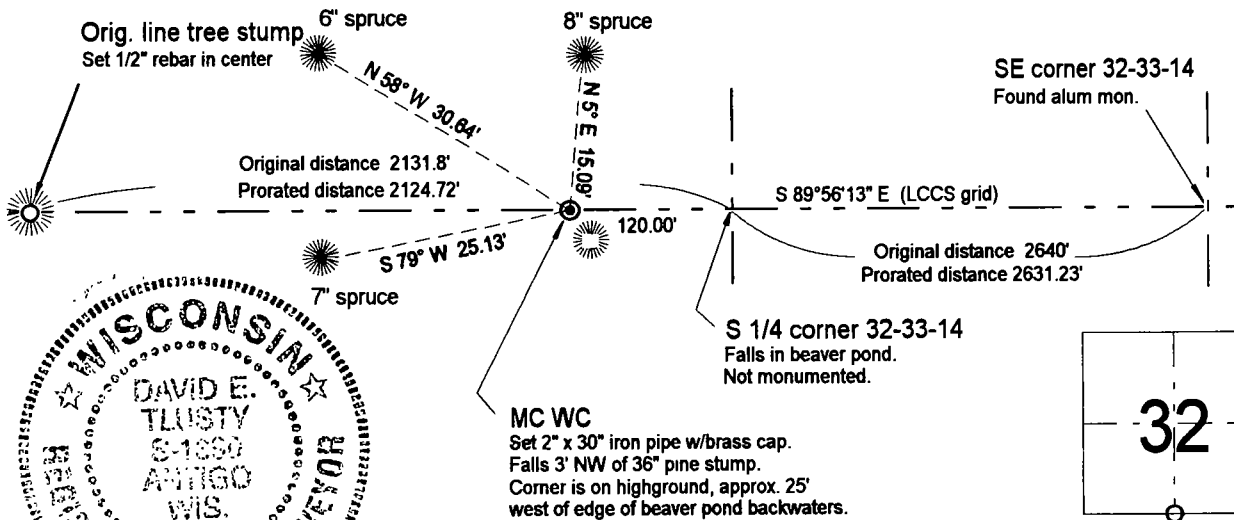
Field book FB17-106

- 3/4" x 30" rebar set
  - 3/4" iron pipe found
  - ⊙ 2" x 30" iron pipe with brass cap set.
  - ▽ RR spike found
  - utility pole
  - + Set white vinyl sign post on west side of monument
- Tie bearings magnetic with hand compass.



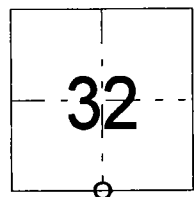
LCCS Langlade County Coordinate System

BT's measured to alum. nail in low blaze on side of tree, unless noted.



*David E. Tlusty*  
 12/1/00

I, David E. Tlusty, Registered Land Surveyor, as Langlade County Surveyor, certify that the corner location on this record was determined by me and that this U.S. Public Land Survey Monument Record is correct to the best of my knowledge and belief.



○ = corner perpetuated  
 The South Quarter corner of Section 32, T. 33 N., R. 14 E., Langlade County, WI

Index No. Z7 33-14