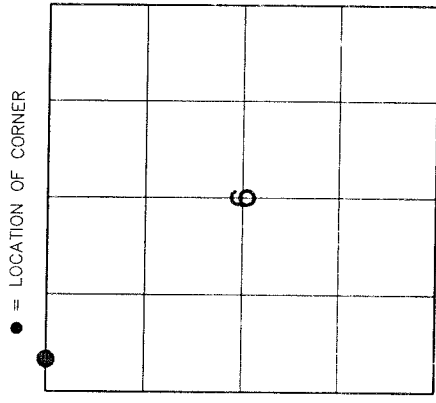


4341331 0038 2017

U.S. PUBLIC LAND SURVEY MONUMENT RECORD

HISTORY OF ORIGINAL CORNER ESTABLISHMENT AND SUBSEQUENT RESTORATION AND DESCRIPTION OF ANY RECORD, MONUMENT OCCUPATIONAL, TESTIMONIAL OR OTHER EVIDENCE CONSIDERED:

THE ORIGINAL CORNER WAS SET BY ALFRED MILLARD IN 1857 WITH THE ORIGINAL BEARING TREES OF:
 HEMLOCK 12" N78°E 40 LINKS
 HEMLOCK 20" S80°E 15 LINKS
 1990 - KELLY FOUND KELLY SET A 3" ALUMINUM MONUMENT IN THE WRONG LOCATION
 1998 - ARNONT AND TLUSTY FOUND A REBAR AS SHOWN BY A RESIDENT AND SET A 1.5" PIPE WITH BRASS CAP
 2016-I FOUND THE 1.5" PIPE WITH THE BRASS CAP AND SET TIES AS SHOWN

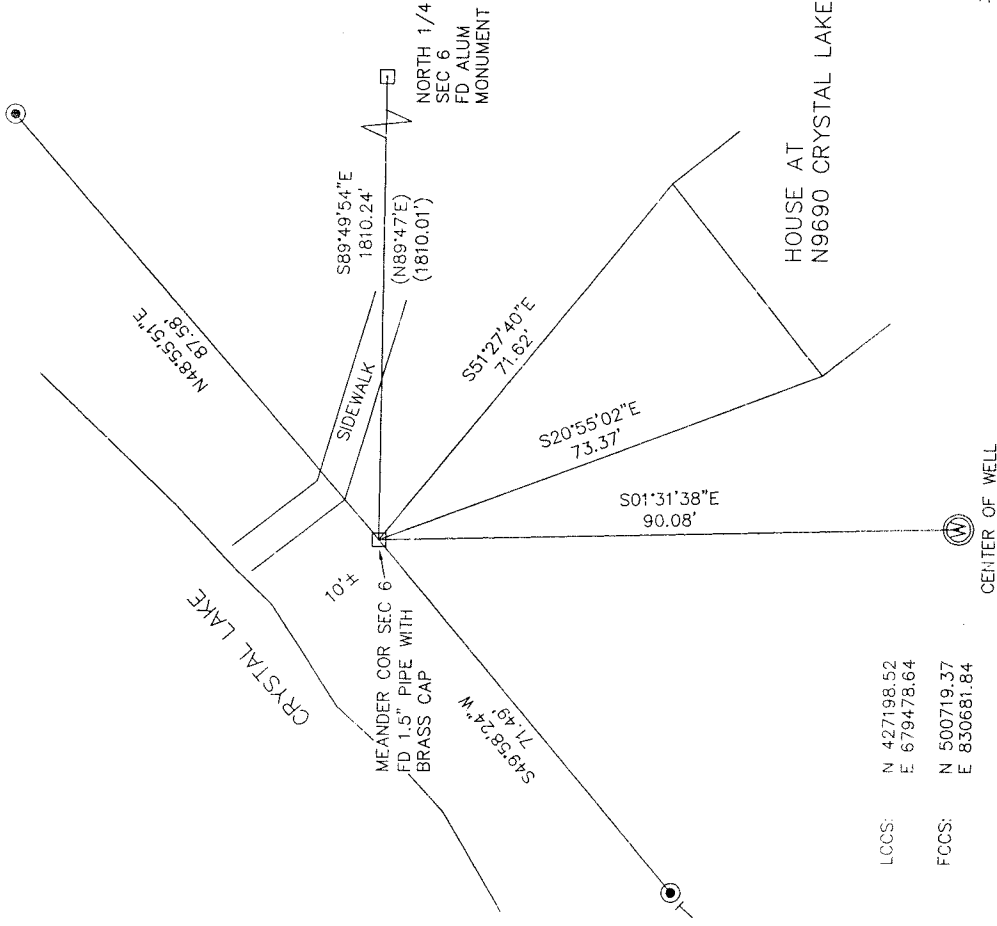


● = LOCATION OF CORNER

SECTION 6
 TOWNSHIP 33 NORTH, RANGE 13 EAST
 TOWN OF LANGLADE
LANGLADE COUNTY, WISCONSIN

- CORNER WAS: (CHECK ALL THAT APPLY)
- RESTORED THROUGH ACCEPTANCE OF AN OBLITERATED EVIDENCE LOCATION
 - RESTORED THROUGH ACCEPTANCE OF A FOUND PERPETUATED LOCATION
 - CONSIDERED A LOST CORNER AND REESTABLISHED THROUGH LOST CORNER PROPORTIONATE METHODS (INCLUDE A PLAN VIEW DRAWING SHOWING DISTANCES AND DIRECTIONS TO OTHER PUBLIC LAND SURVEY CORNERS USED FOR PROPORTIONING AND DETERMINING THE CORNER LOCATION)
 - RESTORED OR REESTABLISHED IN A LOCATION THAT DIFFERS FROM A PREVIOUS RESTORATION OR RE-ESTABLISHMENT (INCLUDE A PLAN VIEW DRAWING AND INDICATE WHAT WAS SET AND/OR FOUND)
 - CHECK IF THERE IS ADDITIONAL INFORMATION ON BACK

DESCRIBE THE MONUMENT AND ACCESSORIES USED TO PERPETUATE THE LOCATION OF THE CORNER. (INCLUDE A PLAN VIEW DRAWING AND INDICATE WHAT WAS SET AND/OR FOUND) ALSO INCLUDE FOUR TIES TO THE SECTION CORNER AND DESCRIPTION OF THE TIES.



● SET 3/4" X 30" IRON REBAR AT ALL TIE LOCATIONS

BEARINGS REFERENCED TO THE LANGLADE COUNTY COORDINATE SYSTEM

T - WHITE VINYL POST SET

TREES SHOWN HAVE BEARING TREE SIGNS NAILED TO FACE



LCOS: N 427198.52
 E 679478.64
 FCCS: N 500719.37
 E 830681.84

○ CENTER OF WELL

HOUSE AT
 N9690 CRYSTAL LAKE RD



INDEX NO. _____

CHARLEY G. BRINKMEIER

(Type or print name) CERTIFY THAT THE CORNER LOCATION SHOWN ON THIS RECORD WAS DETERMINED BY ME OR UNDER MY DIRECTION AND CONTROL, AND THAT THIS U.S. PUBLIC LAND SURVEY MONUMENT RECORD IS CORRECT AND COMPLETE TO THE BEST OF MY KNOWLEDGE AND BELIEF.

Charley G. Brinkmeier
 SIGNATURE

1-17-17
 DATE