

U.S. PUBLIC LAND SURVEY MONUMENT RECORD

(Prepared and as required by S. A-E 7.08 WI Administrative Code)

The NORTH 1/4 corner of Section 1, T. 33 N., R. 13 E., Langlade County, WI
 Corner was (check all that apply)

- Restored through acceptance of an obliterated evidence location.
- Restored through acceptance of a found perpetuated location.
- Determined to be lost and re-established through proportionate methods.
 (show bearings and distances to PLSS corners used for proportioning.)
- Restored/recovered/re-established in a location that differs from a previously established position. (Show difference in plan view below.)
- Check here if additional information is shown on the reverse side of this form.

Describe record evidence, recovered physical evidence, occupational evidence, testimonial evidence, and all other evidence considered in the recovery/restoration of the corner.

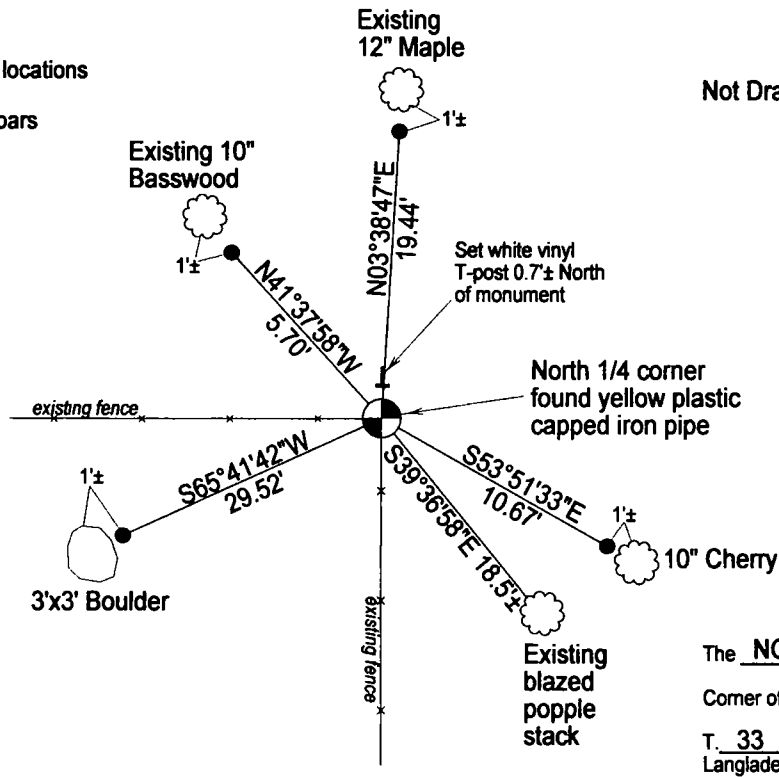
- 1857- Government Surveyor Alfred Millard set 1/4 corner in original survey. BTs: 12" Y. Birch N69°E, 16 links; 11" Elm, S35°W, 48 links.
- 1981- Dobbratz shows using a prorated position at corner location but does not indicate setting anything per map #40418 of Langlade County records.
- 1998- Kim Pritzlaff (RLS #1259), surveying in Section 36, T34N-R13E, shows this corner as an "Existing Forest County Monument" per map dated November 10th, 1998 of Forest County Records.
- 2012- Surveying in Section 1, I found an existing iron pipe with a yellow plastic cap stamped "RLS 1259", which would indicate it being set by Pritzlaff. I also found three existing bearing trees blazed facing the iron pipe. I accept the position of the iron pipe as the best available evidence of the corner.

Physical description of the monument set:

I accept the yellow plastic capped iron pipe as the corner and tied it out as shown below.

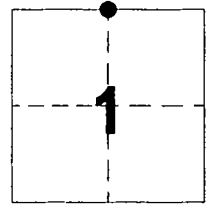
Describe the accessories used to perpetuate the location of the corner. Include a plan view drawing and indicate accessories found/set. Describe measuring point on bearing trees. Show any topographic features that would aid in future recovery of the corner.

- Notes:
- Set 3/4" x 30" long rebar at tie locations
 - Bearing trees blazed at chest
 - Measurements taken to set rebars



Not Drawn to Scale

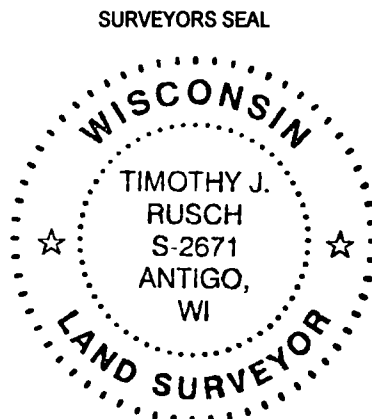
The NORTH 1/4
 Corner of Section 1
 T. 33 N., R. 13 E.
 Langlade County, WI



● = Location of corner

I, Timothy J. Rusch, certify that the corner location shown on this record was determined by me or under my direction and control and that this U.S. Public Land Survey Monument Record is correct and complete to the best of my knowledge and belief.

Timothy J. Rusch 11-30-2012
 Signature Date



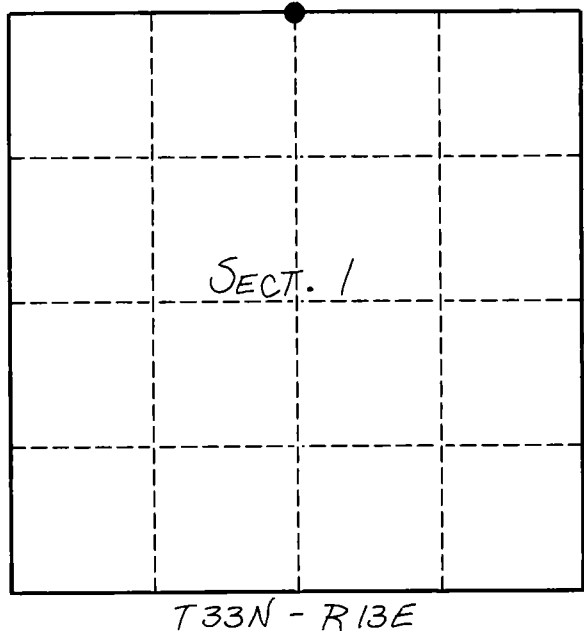
U. S. PUBLIC LAND SURVEY MONUMENT RECORD

INSTRUCTIONS:

This record shall show the location of the corner and shall include all of the following nine elements (a through i).

- (a) Identify the corner by reference to the U.S. public land survey system.
- = Corner monument restored.

ORIGINAL CORNER ESTABLISHED BY
JAMES L. NOWLIN IN 1865.



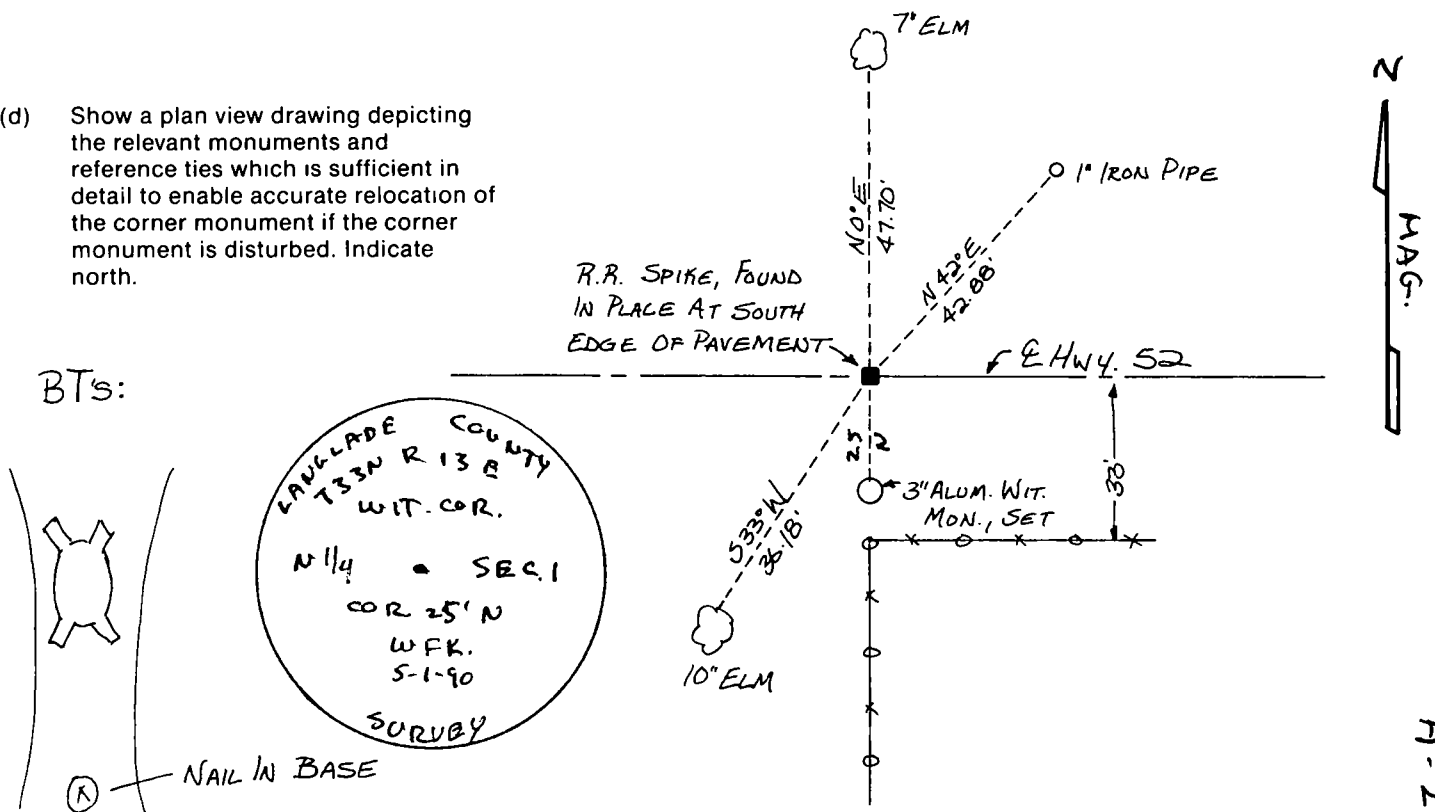
- (b) Describe any record evidence, monument evidence, occupational evidence, testimonial evidence or any other material evidence you considered, and whether the monument was found or placed.

FOUND IN PLACE. R.R. SPIKE BELOW ROAD SURFACE, S. EDGE OF PAVEMENT

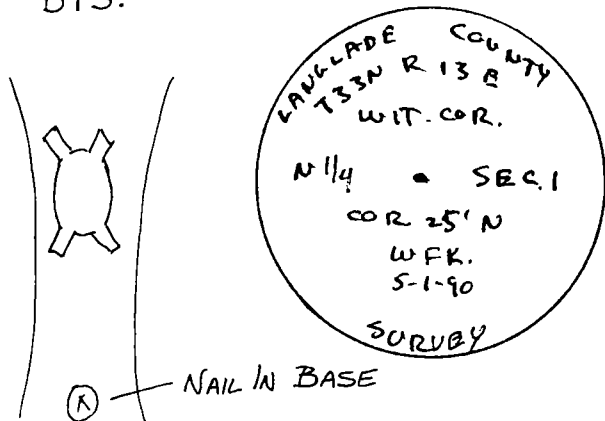
(5/31/94 J WALLIN (WISD.O.T.) REPORTED THAT THIS MONUMENT & TIES ARE APPROXIMATELY 1/4 MILE EAST OF THE NW CORNER OF SECTION 1, SO IT APPEARS THAT KELLY MONUMENTED A 1/16th CORNER.
D. T. [Signature]

- (c) In the plan view drawing below, provide reference ties to at least 4 witness monuments, or, if the location is within a municipality, to at least 2 witness monuments. (Witness monuments shall be made of concrete, natural stone, iron or other equally durable material.) Describe witness monuments.

- (d) Show a plan view drawing depicting the relevant monuments and reference ties which is sufficient in detail to enable accurate relocation of the corner monument if the corner monument is disturbed. Indicate north.



BT's:



Describe any material discrepancy between the location of the corner as restored or reestablished and the location of that corner as previously restored or reestablished by distance and direction. Show the discrepancy on the plan view drawing under (d), above. Show the distances between the corner as previously restored or reestablished and (1) the corner as restored or reestablished, and (2) to at least 2 of the witness monuments shown on the drawing in (d), above.

NONE

(f) Was the corner restored through acceptance of (1) an obliterated evidence location, or, (2) a found perpetuated location.?

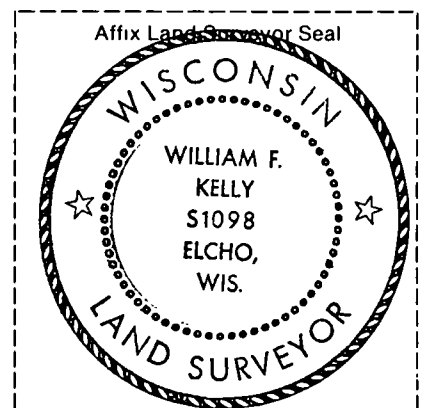
(2)

(g & h) Was the corner reestablished through lost corner proportionate methods? If so, show the method, including the directions and distances to other public land survey corners used as evidence or used for proportioning in determining the corner location.

No

(i) I, WILLIAM F. KELLY R.L.S. 1098
(type or print name)

certify that the corner location shown on this record was determined by me or under my direction and control and that this U.S. Public Land Survey Monument Record is correct and complete to the best of my knowledge and belief.



William F. Kelly 3-30-90
Signature Date