

4341336 0020 2017

U.S. PUBLIC LAND SURVEY MONUMENT RECORD

HISTORY OF ORIGINAL CORNER ESTABLISHMENT AND SUBSEQUENT RESTORATION AND DESCRIPTION OF ANY RECORD, MONUMENT OCCUPATIONAL, TESTIMONIAL OR OTHER EVIDENCE CONSIDERED:

THE ORIGINAL CORNER WAS SET BY ALFRED MILLARD WITH THE ORIGINAL BEARING TREES OF:

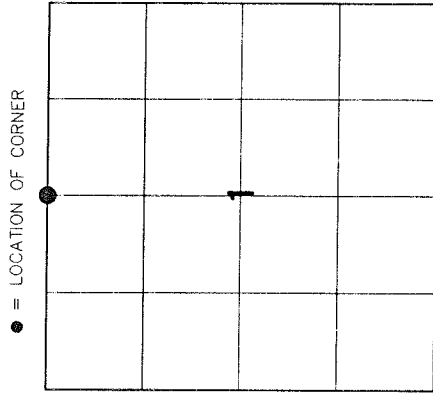
- 12" YEL BIRCH - N69°W 16 LINKS
- 11" ELM - S35°W 48 LINKS

1961 - DOBRATZ SHOWS USING A PRORATED POSITION AT CORNER LOCATION BU DOES NOT INDICATE SETTING ANYTHING PER MAP #40418, LANGLADE COUNTY RECORDS

1998 - PRITZLAFF WAS WORKING IN SEC 36 T34N R13E SHOWS THIS CORNER AS AN EXISTING FOREST COUNTY MONUMENT PER FOREST COUNTY RECORDS

2012 - RUSCH FD AN EXISTING PIPE WITH A PLASTIC CAP WITH PRITZLAFF'S REGISTRATION NUMBER.

2016 - I ALSO FOUND THE PLASTIC CAP AND MANY OF RUSCH'S TIES AND SET AN ALUMINUM CAP IN THE PIPE



● = LOCATION OF CORNER

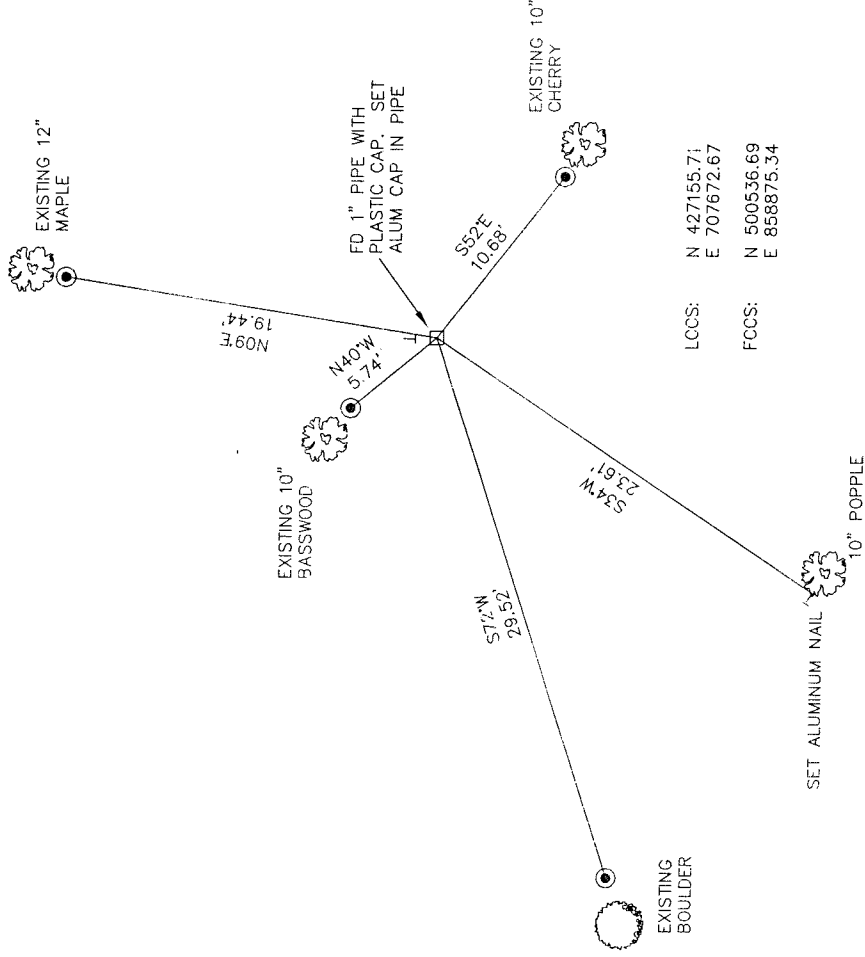
SECTION 1
 TOWNSHIP 33 NORTH, RANGE 13 EAST
 TOWN OF LANGLADE
LANGLADE COUNTY, WISCONSIN

CORNER WAS: (CHECK ALL THAT APPLY)

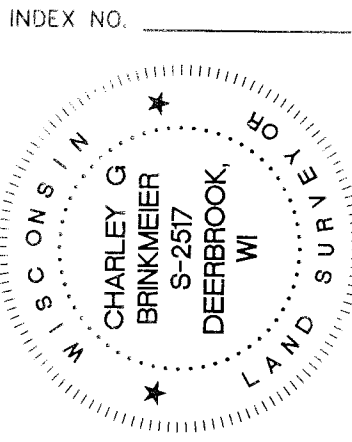
- RESTORED THROUGH ACCEPTANCE OF AN OBLITERATED EVIDENCE LOCATION
- RESTORED THROUGH ACCEPTANCE OF A FOUND PERPETUATED LOCATION
- CONSIDERED A LOST CORNER AND REESTABLISHED THROUGH LOST CORNER PROPORTIONATE METHODS (INCLUDE A PLAN VIEW DRAWING SHOWING DISTANCES AND DIRECTIONS TO OTHER PUBLIC LAND SURVEY CORNERS USED FOR PROPORTIONING AND DETERMINING THE CORNER LOCATION)
- RESTORED OR REESTABLISHED IN A LOCATION THAT DIFFERS FROM A PREVIOUS RESTORATION OR RE-ESTABLISHMENT (INCLUDE A PLAN VIEW DRAWING AND INDICATE WHAT WAS SET AND/OR FOUND)
- CHECK IF THERE IS ADDITIONAL INFORMATION ON BACK

DESCRIBE THE MONUMENT AND ACCESSORIES USED TO PERPETUATE THE LOCATION OF THE CORNER. (INCLUDE A PLAN VIEW DRAWING AND INDICATE WHAT WAS SET AND/OR FOUND) ALSO INCLUDE FOUR TIES TO THE SECTION CORNER AND DESCRIPTION OF THE TIES.

- FOUND 3/4" IRON REBAR
- BEARINGS REFERENCED TO MAGNETIC
- T - WHITE VINYL POST SET
- TREES SHOWN HAVE BEARING TREE SIGNS NAILED TO FACE



LCCS: N 427155.71
 E 707672.67
 FCCS: N 500536.69
 E 858875.34



CHARLEY G. BRINKMEIER

(type or print name) CERTIFY THAT THE CORNER LOCATION SHOWN ON THIS RECORD WAS DETERMINED BY ME OR UNDER MY DIRECTION AND CONTROL AND THAT THIS U.S. PUBLIC LAND SURVEY MONUMENT RECORD IS CORRECT AND COMPLETE TO THE BEST OF MY KNOWLEDGE AND BELIEF.

Charley G. Brinkmeier
 SIGNATURE

1-17-17
 DATE

INDEX NO. _____