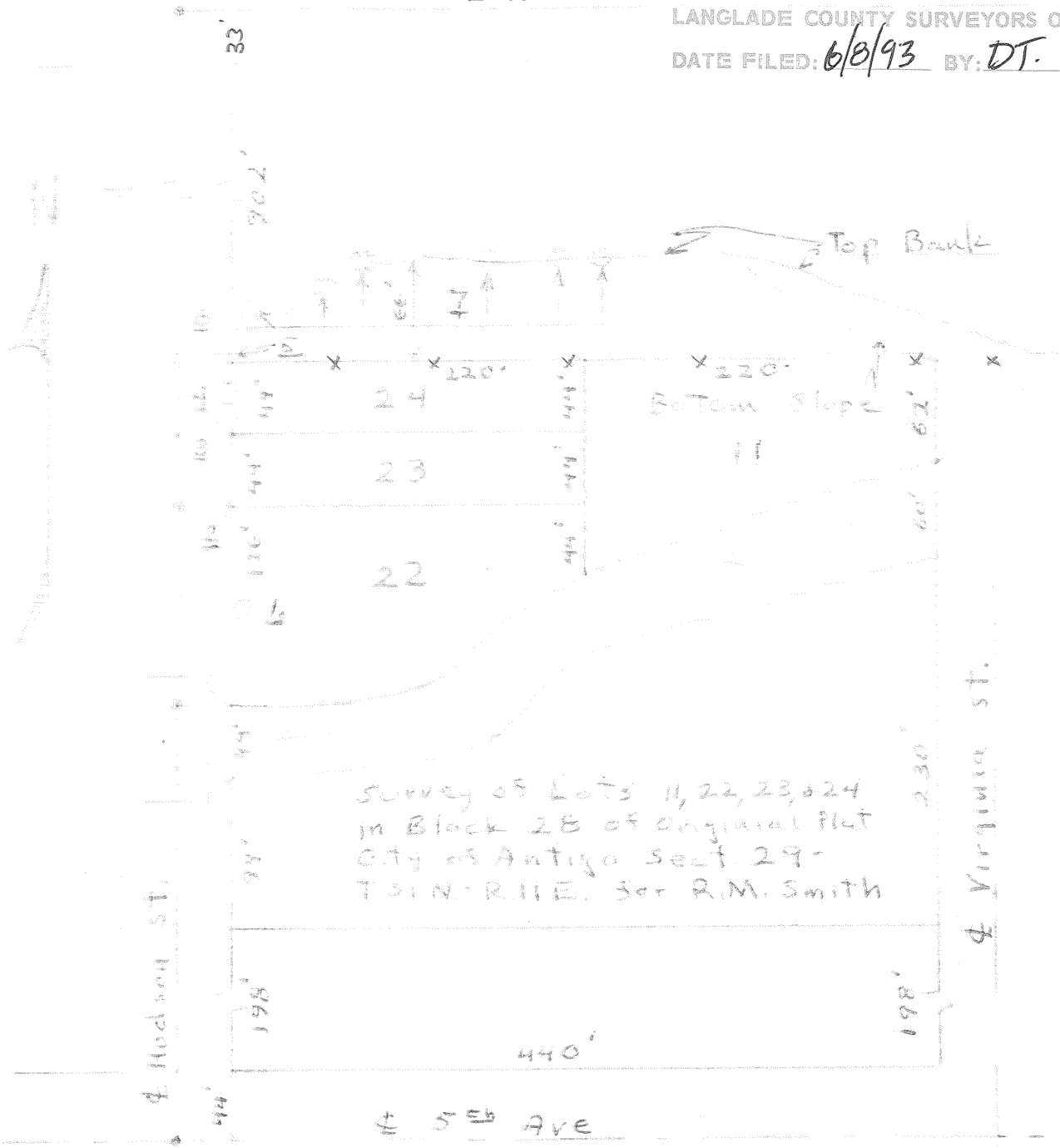


± 2<sup>nd</sup> Ave.

RECORD # 10086  
 LANGLADE COUNTY SURVEYORS OFFICE  
 DATE FILED: 6/8/93 BY: DT.

# LEGEND

- 1- 3 Box Elders on Lot 22
  - 2- 3 Box Elders on St. ROW.
  - 3- 1 Box Elder on St. ROW.
  - 4- 4 Willows on St. ROW,  
and 1 Willow on Lot 24
  - Tree Cluster varies from  
31.5' to 34' E of ± of  
Hudson St.
  - 5- 4 Willows on St. ROW.
  - 6- 1 Box Elder on St. ROW.
  - 7- 7 clusters of Willow Trees  
(34 Trees) all on City Prop.
  - \* Survey Nails Placed in ± of  
Hudson St 33' West of Cor.  
for Lots 22, 23, and 24
  - x- Row of stakes set on  
N. Line of Lots 24 and 11
- All measurements taken  
from ± 5<sup>th</sup> Ave on the  
E of Hudson St.
- Note: ± Hudson St. Est.  
from known points on 5<sup>th</sup>  
Ave and 2<sup>nd</sup> Ave. Survey  
was not tied in to Virginia  
St. at request of client.

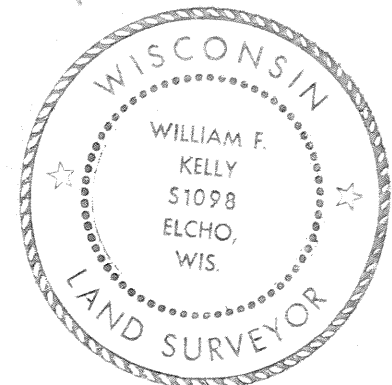


Survey of Lots 11, 22, 23, & 24  
 in Block 28 of Original Plat  
 City of Antigo Sect. 29-  
 T. 1 N. R. 11 E. for R.M. Smith

± 5<sup>th</sup> Ave

Scale 1"=100'

Drawn by W.F. Kelly 28 July 1973



William F. Kelly  
 #60