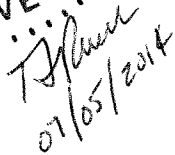


PLAT OF SURVEY

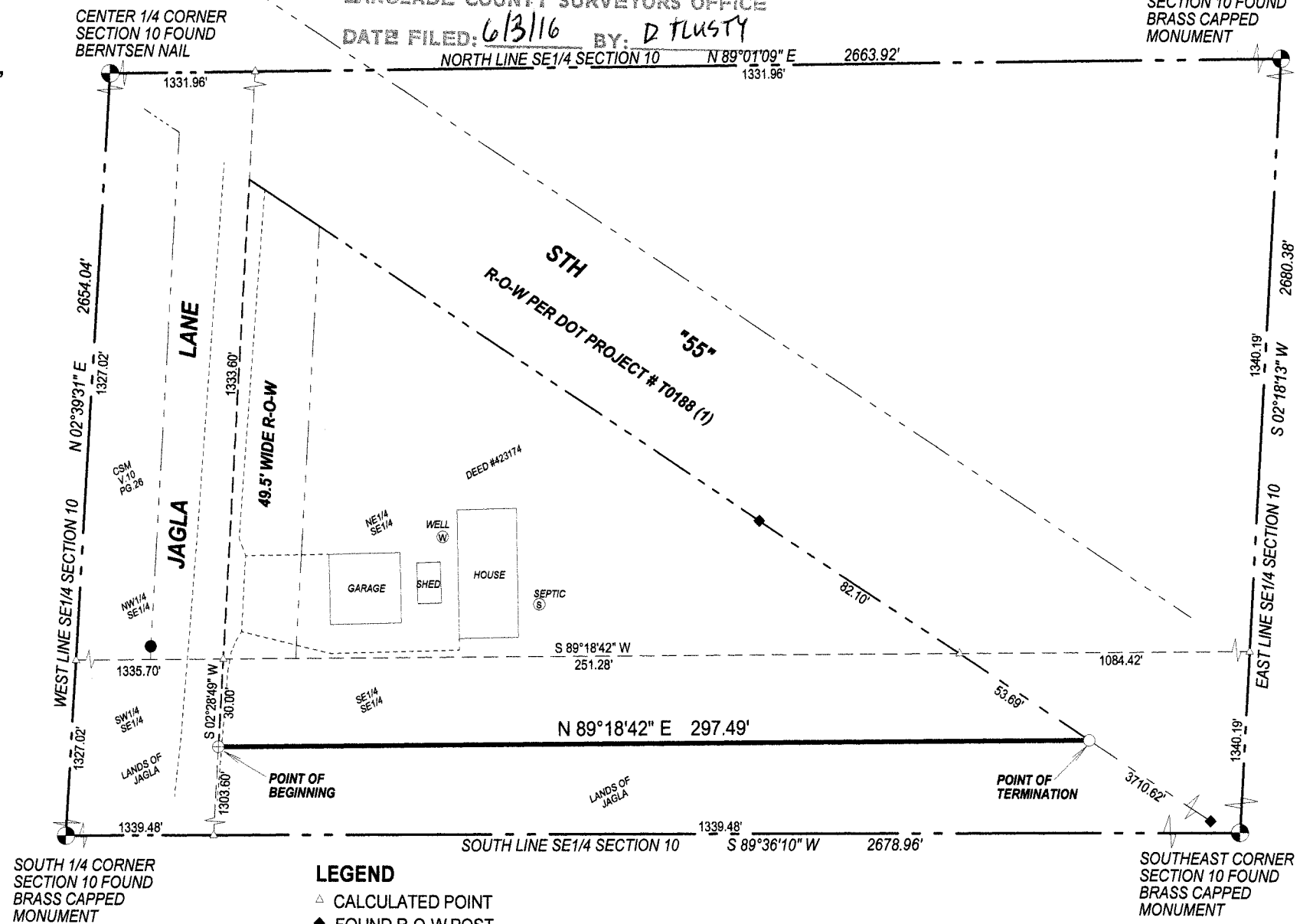
PART OF THE NE1/4 SE1/4, AND SE1/4 SE1/4 OF
SECTION 10, T31N-R14E, TOWN OF WOLF RIVER
LANGLADE COUNTY, WISCONSIN

THAT THIS IS A TRUE AND CORRECT REPRESENTATION OF
THE BOUNDARY SURVEYED TO THE BEST OF MY
KNOWLEDGE AND BELIEF.



RECORD # 10261
 LANGLADE COUNTY SURVEYORS OFFICE
 DATE FILED: 6/3/16 BY: D. Flusty
NORTH LINE SE 1/4 SECTION 10 N 89° 01' W

EAST 1/4 CORNER
SECTION 10 FOUND
BRASS CAPPED
MONUMENT



▲ CALCULATED POINT
 ◆ FOUND R-O-W POST
 ● FOUND 1" IRON PIPE
 ⊕ SET PK NAIL
 ○ SET 1.05" O.D. X 24" LONG IRON PIPE WEIGHING 1.13 LBS/LF

SCALE: 1 INCH = 50 FEET

