

LANGLADE COUNTY

SECTION INFORMATION SHEET

BY: Wisconsin Valley Surveyors

DATE: January 12, 2002

SECTION 19, T. 31 N., R. 11 E.

N

RECORD # 10326

LANGLADE COUNTY SURVEYORS OFFICE

DATE FILED: 3/11/02 BY: D. Goslin

- ☐ NAIL SET
- ☒ NAIL FOUND
- RR SPIKE SET
- RR SPIKE FOUND
- IRON PIPE SET (SIZE)
- ☒ IRON PIPE FOUND (SIZE 2") capped
- ☒ Brass Cap Monument found

IT WILL BE ASSUMED THAT ALL DIMENSIONS SHOWN ARE COMPUTED DIMENSIONS, UNLESS THEY ARE MARKED: "(D)" WHICH STANDS FOR DIRECT MEASUREMENT.

FOR US TO USE THE DIRECT MEASUREMENTS IN A LEAST SQUARES ADJUSTMENT, PLEASE COMPLETE THE FOLLOWING:

THEODOLITE ACCURACY 5 Sec.

MANUFACTURERS EDM ACCURACY

SPECIFICATION \pm 2 mm \pm 2 ppm

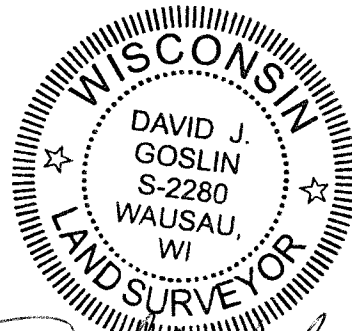
TRAVERSE TARGETS (CIRCLE ONE)

ON TRIBRACHS HANDHELD BOTH

DIRECT ANGLES WERE TURNED 2 TIMES

DIRECT DISTANCES WERE MEASURED (CIRCLE ONE): ONE DIRECTION TWO DIRECTIONS

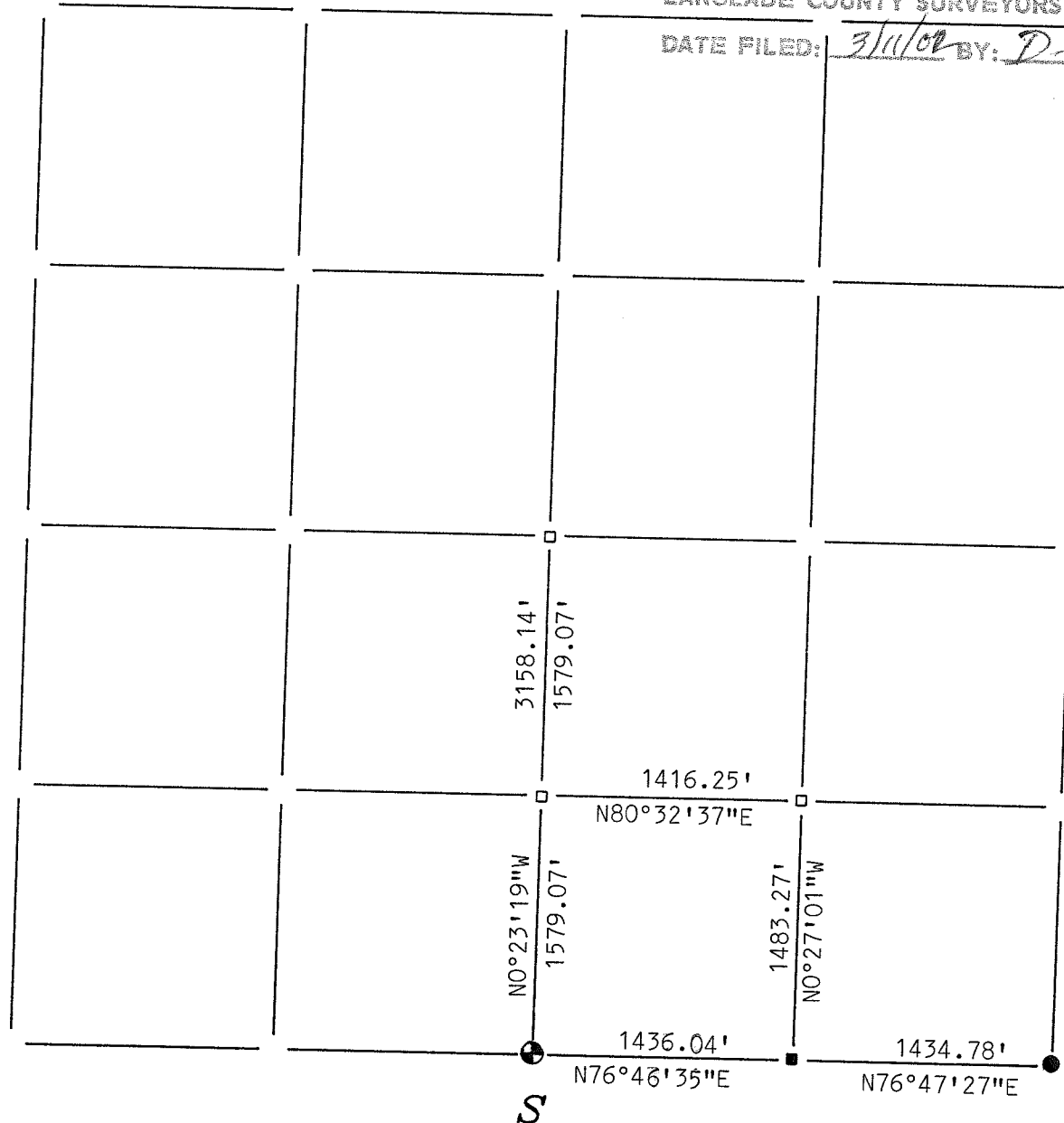
COMMENTS:



David J. Goslin

W

E



34-12	34-11	34-10	34-9	34-8	34-7	34-6	34-5	34-4	34-3	34-2	34-1
33-12	33-11	33-10	33-9	33-8	33-7	33-6	33-5	33-4	33-3	33-2	33-1
32-12	32-11	32-10	32-9	32-8	32-7	32-6	32-5	32-4	32-3	32-2	32-1
31-12	31-11	31-10	31-9	31-8	31-7	31-6	31-5	31-4	31-3	31-2	31-1
30-12	30-11	30-10	30-9	30-8	30-7	30-6	30-5	30-4	30-3	30-2	30-1
29-12	29-11	29-10	29-9	29-8	29-7	29-6	29-5	29-4	29-3	29-2	29-1
28-12	28-11	28-10	28-9	28-8	28-7	28-6	28-5	28-4	28-3	28-2	28-1
27-12	27-11	27-10	27-9	27-8	27-7	27-6	27-5	27-4	27-3	27-2	27-1
26-12	26-11	26-10	26-9	26-8	26-7	26-6	26-5	26-4	26-3	26-2	26-1
25-12	25-11	25-10	25-9	25-8	25-7	25-6	25-5	25-4	25-3	25-2	25-1
24-12	24-11	24-10	24-9	24-8	24-7	24-6	24-5	24-4	24-3	24-2	24-1
23-12	23-11	23-10	23-9	23-8	23-7	23-6	23-5	23-4	23-3	23-2	23-1
22-12	22-11	22-10	22-9	22-8	22-7	22-6	22-5	22-4	22-3	22-2	22-1
21-12	21-11	21-10	21-9	21-8	21-7	21-6	21-5	21-4	21-3	21-2	21-1
20-12	20-11	20-10	20-9	20-8	20-7	20-6	20-5	20-4	20-3	20-2	20-1
19-12	19-11	19-10	19-9	19-8	19-7	19-6	19-5	19-4	19-3	19-2	19-1