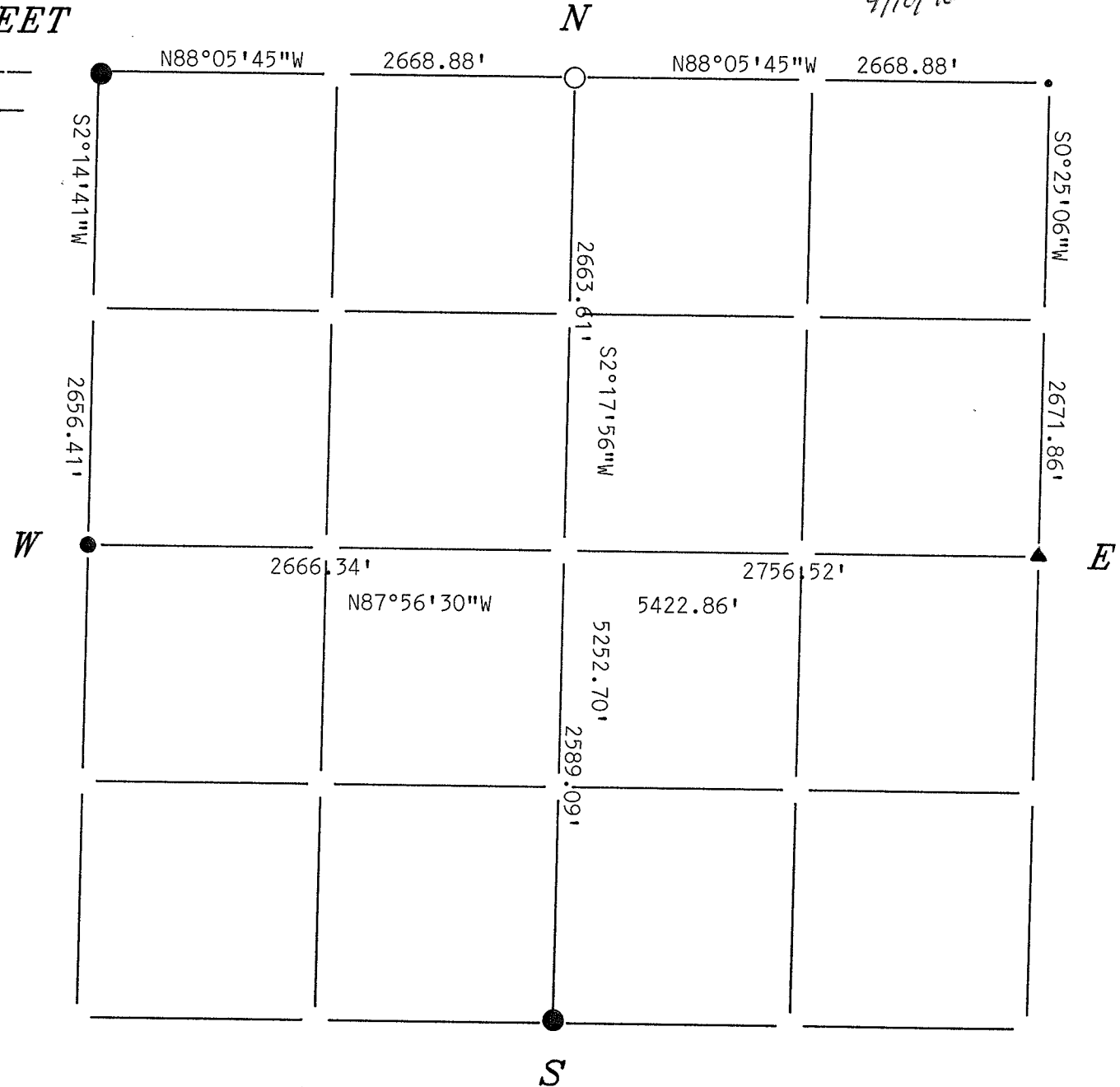


9/10/46

*DATE:* 8-14-96

- 
- A circular seal for a Wisconsin Land Surveyor. The outer ring contains the text "WISCONSIN" at the top and "LAND SURVEYOR" at the bottom, separated by two five-pointed stars. The inner circle contains the name "EDWIN R. ABENDROTH", the license number "S-798", and the location "WAUSAU, WIS." in three lines.

[illegible]