

LANGLADE COUNTY

SECTION INFORMATION SHEET

BY: D. Tlusty Tom Annot

DATE: 12/2/98

OBSERVATIONS MADE TO CONFIRM
LOCATION OF M.C. (RE-BAR) ON
E. SIDE OF CRYSTAL LAKE.
(SEE TOM ANNOT
CORNER FORM)

NAIL SET
NAIL FOUND
RR SPIKE SET
RR SPIKE FOUND
IRON PIPE SET (SIZE)
IRON PIPE FOUND (SIZE)

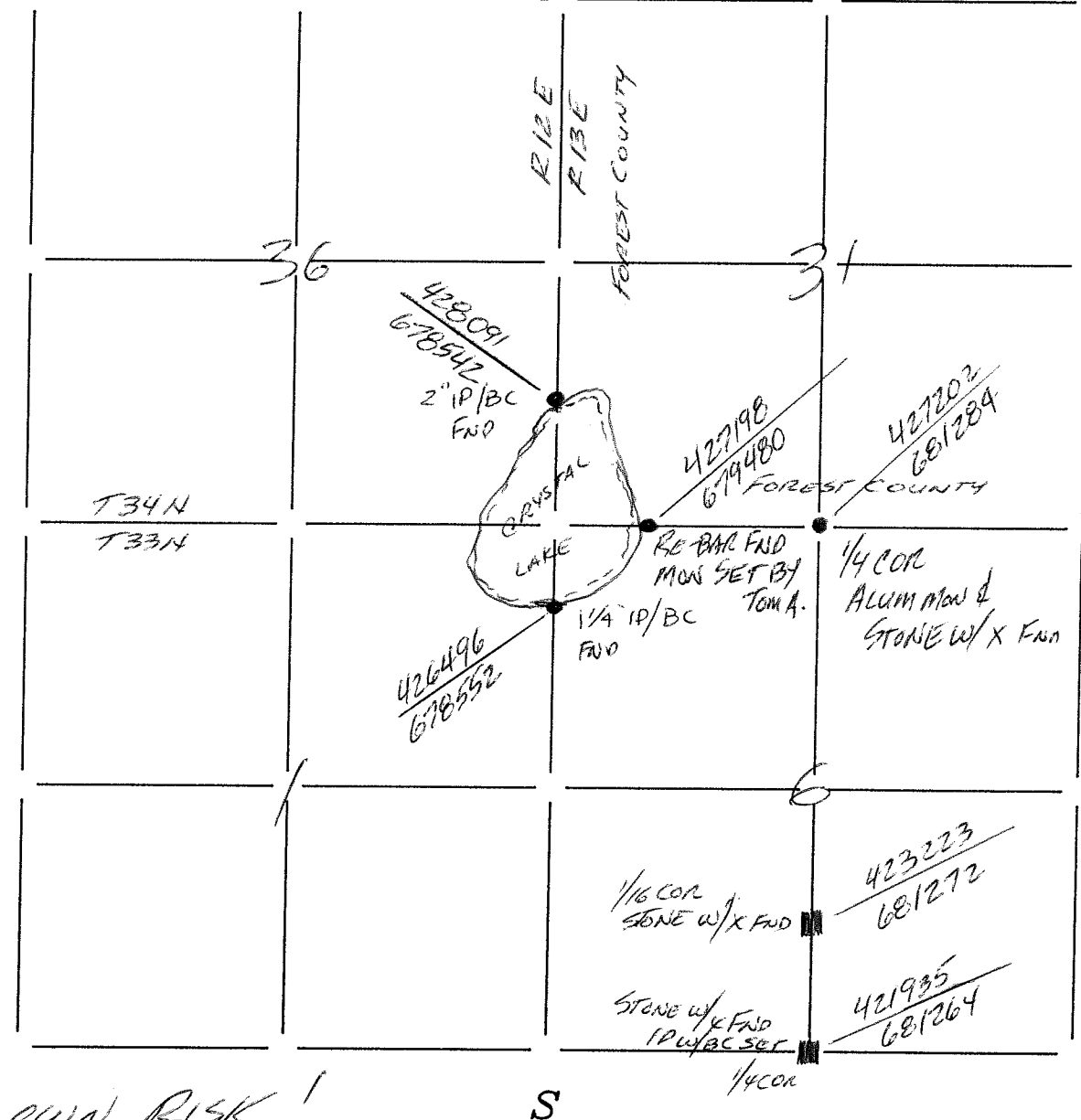
IT WILL BE ASSUMED THAT ALL DIMENSIONS
SHOWN ARE COMPUTED DIMENSIONS, UNLESS
THEY ARE MARKED: "(D)" WHICH STANDS FOR
DIRECT MEASUREMENT.

FOR US TO USE THE DIRECT MEASUREMENTS
IN A LEAST SQUARES ADJUSTMENT, PLEASE
COMPLETE THE FOLLOWING:
THEODOLITE ACCURACY
MANUFACTURERS EDM ACCURACY
SPECIFICATION +- mm + ppm
TRAVERSE TARGETS (CIRCLE ONE)
ON TRIBRACHS HANDHELD BOTH
DIRECT ANGLES WERE TURNED TIMES
DIRECT DISTANCES WERE MEASURED (CIRCLE
ONE): ONE DIRECTION TWO DIRECTIONS

COMMENTS:

NOTE: LANGLADE COUNTY COORDINATES
SHOWN WERE OBTAINED WITH
TRIMBLE PRO XR CAPABLE OF
DISPLAYING COORDINATES ACCURATE
TO 1 METER. USE AT YOUR OWN RISK!

SECTION FILE 6, T. 33 N., R. 13 E. 10481
RECORD #
LANGLADE COUNTY SURVEYORS OFFICE
DATE FILED: 12/9/98 BY: D. Tlusty



30-11	30-12	31-9	31-10	31-11	31-12	31-13	31-14	31-15	32-9	32-10	32-11	32-12	32-13	32-14	33-9	33-10	33-11	33-12	33-14	34-8	34-10	34-11	34-12
-------	-------	------	-------	-------	-------	-------	-------	-------	------	-------	-------	-------	-------	-------	------	-------	-------	-------	-------	------	-------	-------	-------