

# LANGLADE COUNTY

## SECTION INFORMATION SHEET

BY: MSA PROFESSIONAL SERVICES

DATE: 4-20-98

SECTION 23, T. 31 N., R. 10 E.

"(D)" N

RECORD # 10488

LANGLADE COUNTY SURVEYORS OFFICE

DATE FILED: 4/22/98 BY: D. TUSTY

- ✱ NAIL SET, PK FROM US PUBLIC MON. RECORD
- NAIL FOUND
- RR SPIKE SET
- RR SPIKE FOUND
- IRON PIPE SET (SIZE \_\_\_\_\_)
- IRON PIPE FOUND (SIZE \_\_\_\_\_)
- ALUM PIPE, WITH 2 1/2" DIA. TABLET
- 2" DIA. GALV. PIPE SET, WITH 3 1/2" DIA. TABLET

IT WILL BE ASSUMED THAT ALL DIMENSIONS SHOWN ARE COMPUTED DIMENSIONS, UNLESS THEY ARE MARKED: "(D)" WHICH STANDS FOR DIRECT MEASUREMENT.

FOR US TO USE THE DIRECT MEASUREMENTS IN A LEAST SQUARES ADJUSTMENT, PLEASE COMPLETE THE FOLLOWING:

THEODOLITE ACCURACY \_\_\_\_\_  
MANUFACTURERS EDM ACCURACY \_\_\_\_\_  
SPECIFICATION + - \_\_\_\_\_ mm + - \_\_\_\_\_ ppm

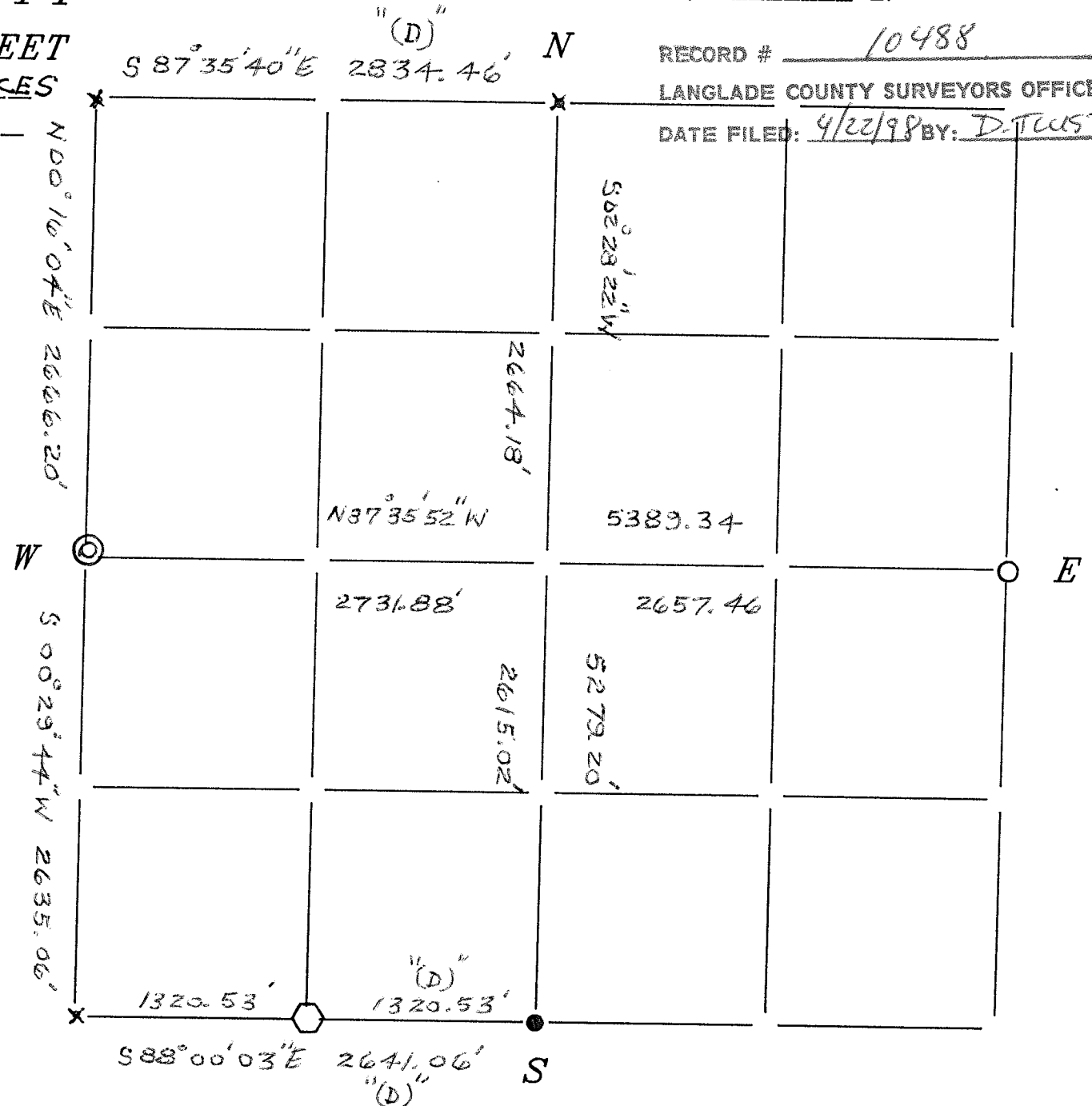
TRAVERSE TARGETS (CIRCLE ONE)

ON TRIBRACHS HANDHELD BOTH

DIRECT ANGLES WERE TURNED \_\_\_\_\_ TIMES

DIRECT DISTANCES WERE MEASURED (CIRCLE ONE): ONE DIRECTION TWO DIRECTIONS

COMMENTS:



30-11	30-12	31-9	31-10	31-11	31-12	31-13	31-14	31-15	32-8	32-9	32-10	32-11	32-12	32-13	32-14	33-9	33-10	33-11	33-12	33-14	34-9	34-10	34-11	34-12
-------	-------	------	-------	-------	-------	-------	-------	-------	------	------	-------	-------	-------	-------	-------	------	-------	-------	-------	-------	------	-------	-------	-------