

# LANGLADE COUNTY

## SECTION INFORMATION SHEET

BY: WISCONSIN VALLEY SURVEYORS

DATE: 11-9-99

SECTION 8, T. 31

RECORD # 10511  
LANGLADE COUNTY SURVEYORS OFFICE

DATE FILED: 12/30/99 BY: D. Flusky

- NAIL SET
- NAIL FOUND ☒
- RR SPIKE SET
- RR SPIKE FOUND
- IRON PIPE SET (SIZE       )
- IRON PIPE FOUND (SIZE 1")

○ 3/4" rebar

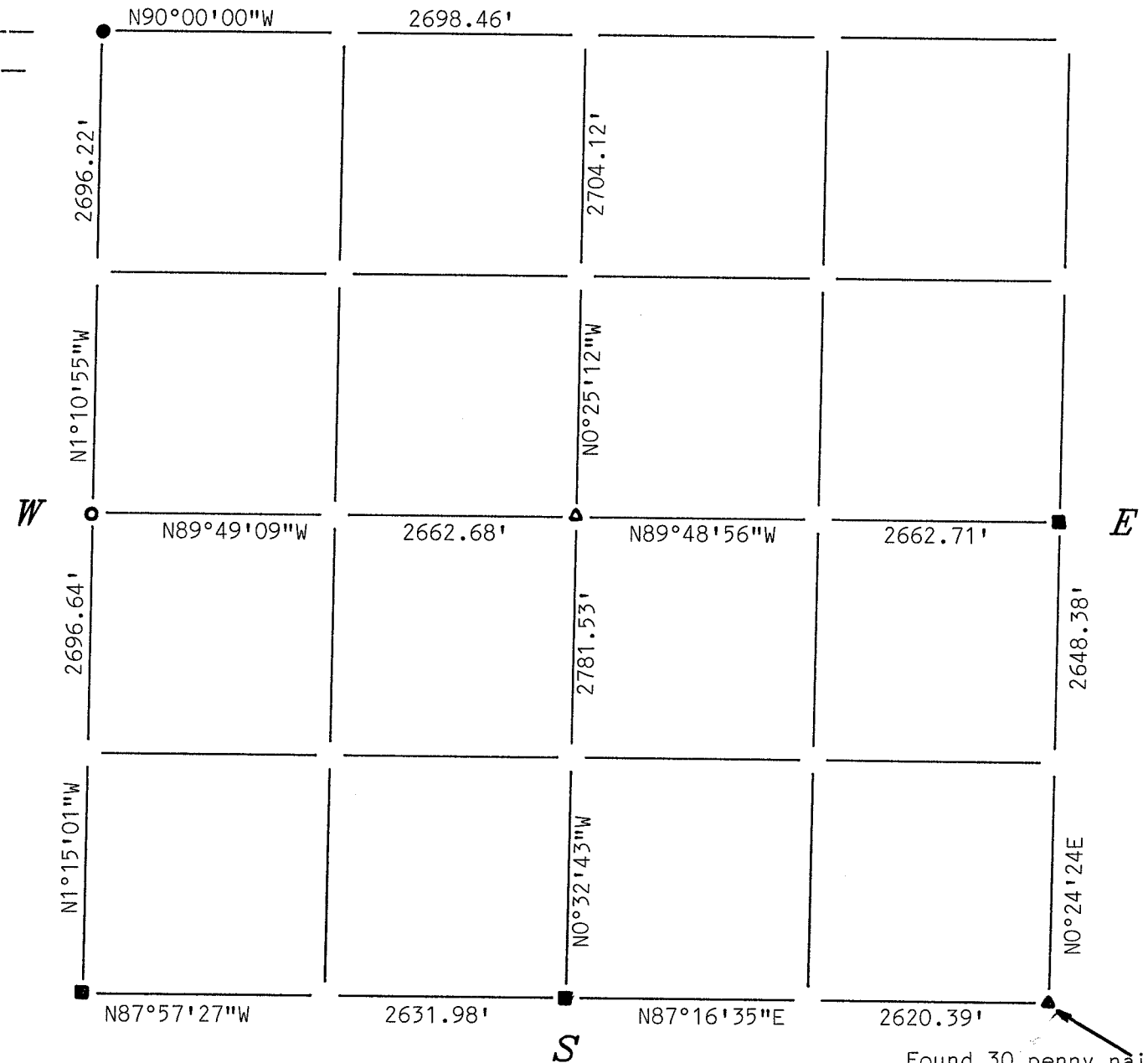
■ Langlade Co brass cap mon.

IT WILL BE ASSUMED THAT ALL DIMENSIONS SHOWN ARE COMPUTED DIMENSIONS, UNLESS THEY ARE MARKED: "(D)" WHICH STANDS FOR DIRECT MEASUREMENT.

FOR US TO USE THE DIRECT MEASUREMENTS IN A LEAST SQUARES ADJUSTMENT, PLEASE COMPLETE THE FOLLOWING:

THEODOLITE ACCURACY 20"  
MANUFACTURERS EDM ACCURACY  
SPECIFICATION  $\pm$  5 mm  $\pm$  5 ppm  
TRAVERSE TARGETS (CIRCLE ONE)  
ON TRIBRACHS HANDHELD BOTH  
DIRECT ANGLES WERE TURNED 2 TIMES  
DIRECT DISTANCES WERE MEASURED (CIRCLE ONE): ONE DIRECTION TWO DIRECTIONS

COMMENTS:



Found 30 penny nail  
Corner not on record at time of  
Survey.

30-12	31-12	32-12	33-12	34-12
30-11	31-11	32-11	33-11	34-11
30-10	31-10	32-10	33-10	34-10
30-9	31-9	32-9	33-9	34-9
30-8	31-8	32-8	33-8	34-8
30-7	31-7	32-7	33-7	34-7
30-6	31-6	32-6	33-6	34-6
30-5	31-5	32-5	33-5	34-5
30-4	31-4	32-4	33-4	34-4
30-3	31-3	32-3	33-3	34-3
30-2	31-2	32-2	33-2	34-2
30-1	31-1	32-1	33-1	34-1