

LANGLADE COUNTY

SECTION 9, T. 33 N., R. 13 E.

SECTION INFORMATION SHEET

BY: DEAN WILLIAMS

DATE: 5/11/2000

N RECORD # 10535

LANGLADE COUNTY SURVEYORS OFFICE

DATE FILED: 12/5/00 BY: D. T. G. S. M.

NAIL SET \triangle
NAIL FOUND \blacktriangle
RR SPIKE SET
RR SPIKE FOUND \bullet
IRON PIPE SET (SIZE)
IRON PIPE FOUND (SIZE)
N 1/4 = 1" IP FOUND
W 1/4 = 2" BC IP FOUND
E 1/4 = 1 1/2" BC IP FOUND



IT WILL BE ASSUMED THAT ALL DIMENSIONS SHOWN ARE COMPUTED DIMENSIONS, UNLESS THEY ARE MARKED: "(D)" WHICH STANDS FOR DIRECT MEASUREMENT.

FOR US TO USE THE DIRECT MEASUREMENTS IN A LEAST SQUARES ADJUSTMENT, PLEASE COMPLETE THE FOLLOWING:

THEODOLITE ACCURACY

MANUFACTURERS EDM ACCURACY

SPECIFICATION \pm mm \pm ppm

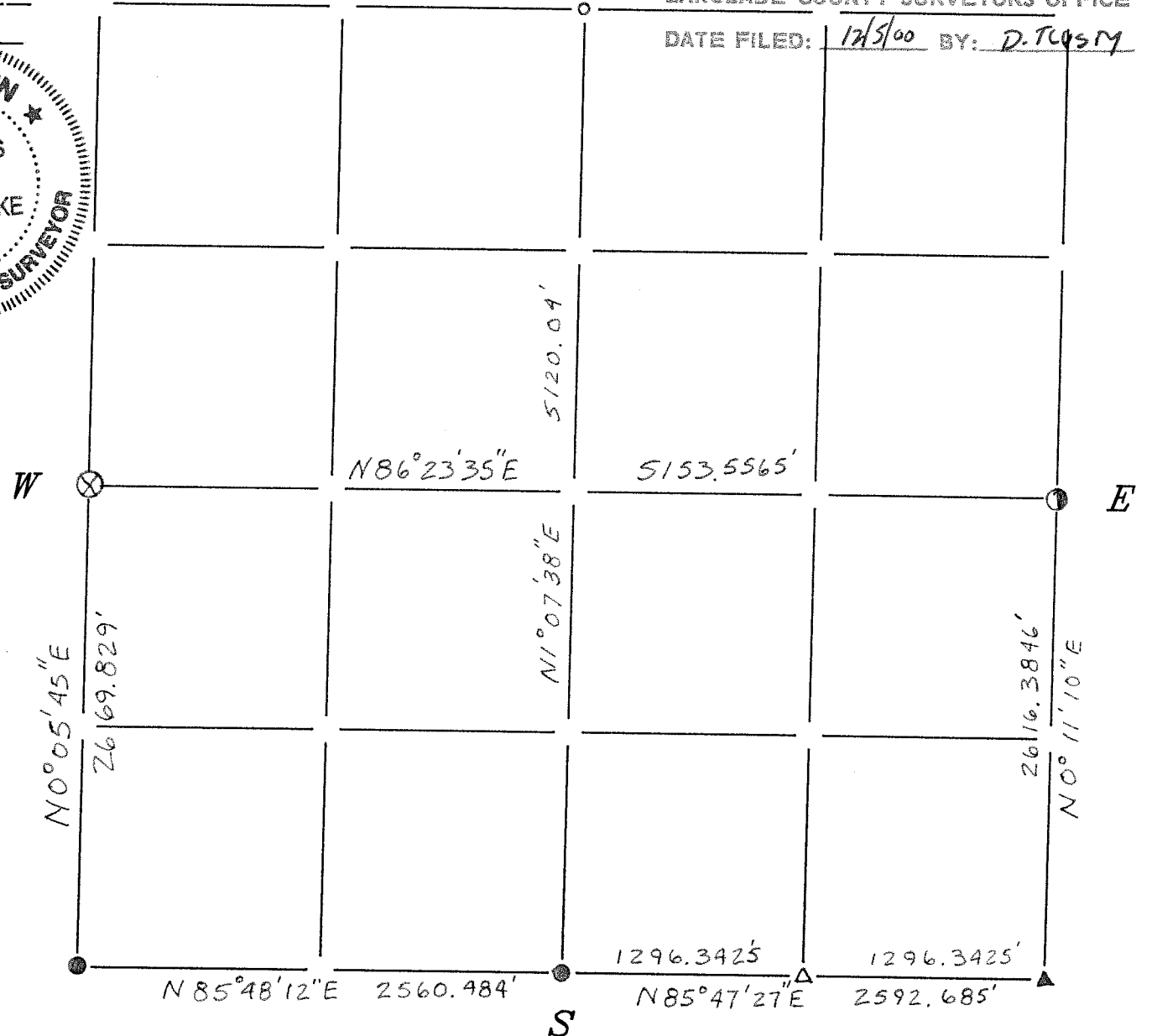
TRAVERSE TARGETS (CIRCLE ONE)

ON TRIBRACHS HANDHELD BOTH

DIRECT ANGLES WERE TURNED TIMES

DIRECT DISTANCES WERE MEASURED (CIRCLE ONE): ONE DIRECTION TWO DIRECTIONS

COMMENTS:



30-11	30-12	31-8	31-9	31-10	31-11	31-12	31-13	31-14	31-15	32-6	32-10	32-11	32-12	32-13	32-14	33-9	33-10	33-11	33-12	33-13	33-14	34-8	34-10	34-11	34-12
-------	-------	------	------	-------	-------	-------	-------	-------	-------	------	-------	-------	-------	-------	-------	------	-------	-------	-------	-------	-------	------	-------	-------	-------