

LANGLADE COUNTY

SECTION 2, T. 33 N., R. 10 E.

SECTION INFORMATION SHEET

BY: DEAN WILLIAMS

DATE: 9/20/2001

NAIL SET
NAIL FOUND
RR SPIKE SET
RR SPIKE FOUND
IRON PIPE SET (SIZE)
IRON PIPE FOUND (SIZE)
ALL CORNERS FOUND ARE
OF RECORD WITH CORNER
FORMS COMPLETED BY OTHERS
X = CALCULATED LOCATION

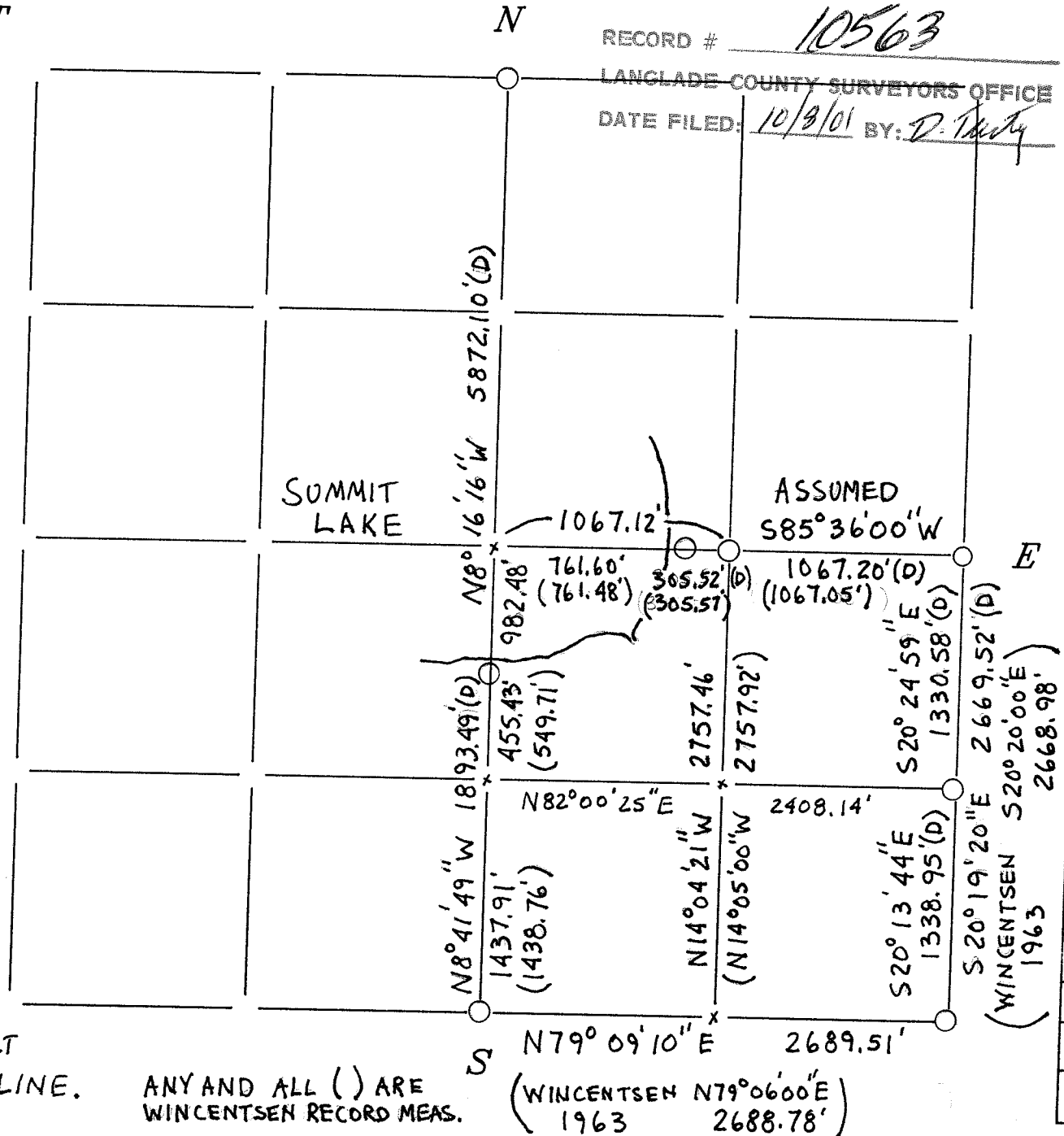
IT WILL BE ASSUMED THAT ALL DIMENSIONS SHOWN ARE COMPUTED DIMENSIONS, UNLESS THEY ARE MARKED: "(D)" WHICH STANDS FOR DIRECT MEASUREMENT.

FOR US TO USE THE DIRECT MEASUREMENTS IN A LEAST SQUARES ADJUSTMENT, PLEASE COMPLETE THE FOLLOWING:

THEODOLITE ACCURACY
MANUFACTURERS EDM ACCURACY
SPECIFICATION +- mm + ppm
TRAVERSE TARGETS (CIRCLE ONE)
ON TRIBRACHS HANDHELD (BOTH)
DIRECT ANGLES WERE TURNED 2 TIMES
DIRECT DISTANCES WERE MEASURED (CIRCLE ONE): (ONE DIRECTION) TWO DIRECTIONS

COMMENTS: THE E-W $\frac{1}{4}$ LINE IS ASSUMED BETWEEN E $\frac{1}{4}$ (S85°36'W) & THE MC. I DID NOT TRAVERSE TO THE W $\frac{1}{4}$ OF SEC 2. THE C $\frac{1}{4}$, BEING IN THE LAKE IS ONLY COMPUTED AS A INTERSECTION OF ABOVE SAID E-W $\frac{1}{4}$ LINE AND THE DIRECT MEASUREMENT OF S $\frac{1}{4}$ TO N $\frac{1}{4}$; N-S $\frac{1}{4}$ LINE.

W



34-12	
34-11	
34-10	
34-9	
34-8	
34-7	
34-6	
34-5	
34-4	
34-3	
34-2	
34-1	
33-12	
33-11	
33-10	
33-9	
33-8	
33-7	
33-6	
33-5	
33-4	
33-3	
33-2	
33-1	
32-12	
32-11	
32-10	
32-9	
32-8	
32-7	
32-6	
32-5	
32-4	
32-3	
32-2	
32-1	
31-12	
31-11	
31-10	
31-9	
31-8	
31-7	
31-6	
31-5	
31-4	
31-3	
31-2	
31-1	
30-12	
30-11	