

LANGLADE COUNTY

SECTION INFORMATION SHEET

BY: Wisconsin Valley Surveyors

DATE: January 4, 2002

SECTION 1, T. 30 N., R. 11 E., S. 11

RECORD # 10572

DATE FILED: 2/8/02 BY: D. Tust

() CALCULATED FROM TLUSTY BREAKDOWN

- NAIL SET
- NAIL FOUND
- RR SPIKE SET
- RR SPIKE FOUND
- IRON PIPE SET (SIZE $1\frac{1}{4}$ ")
- IRON PIPE FOUND (SIZE $3\frac{3}{4}$ ")
- Set $1\frac{1}{4}$ "x30" Iron bar
- Existing 4" brass cap monument
- Aluminum monument

IT WILL BE ASSUMED THAT ALL DIMENSIONS SHOWN ARE COMPUTED DIMENSIONS, UNLESS THEY ARE MARKED: "(D)" WHICH STANDS FOR DIRECT MEASUREMENT.

FOR US TO USE THE DIRECT MEASUREMENTS IN A LEAST SQUARES ADJUSTMENT, PLEASE COMPLETE THE FOLLOWING:

THEODOLITE ACCURACY 5 sec.

MANUFACTURERS EDM ACCURACY

SPECIFICATION \pm 2 mm \pm 2 ppm

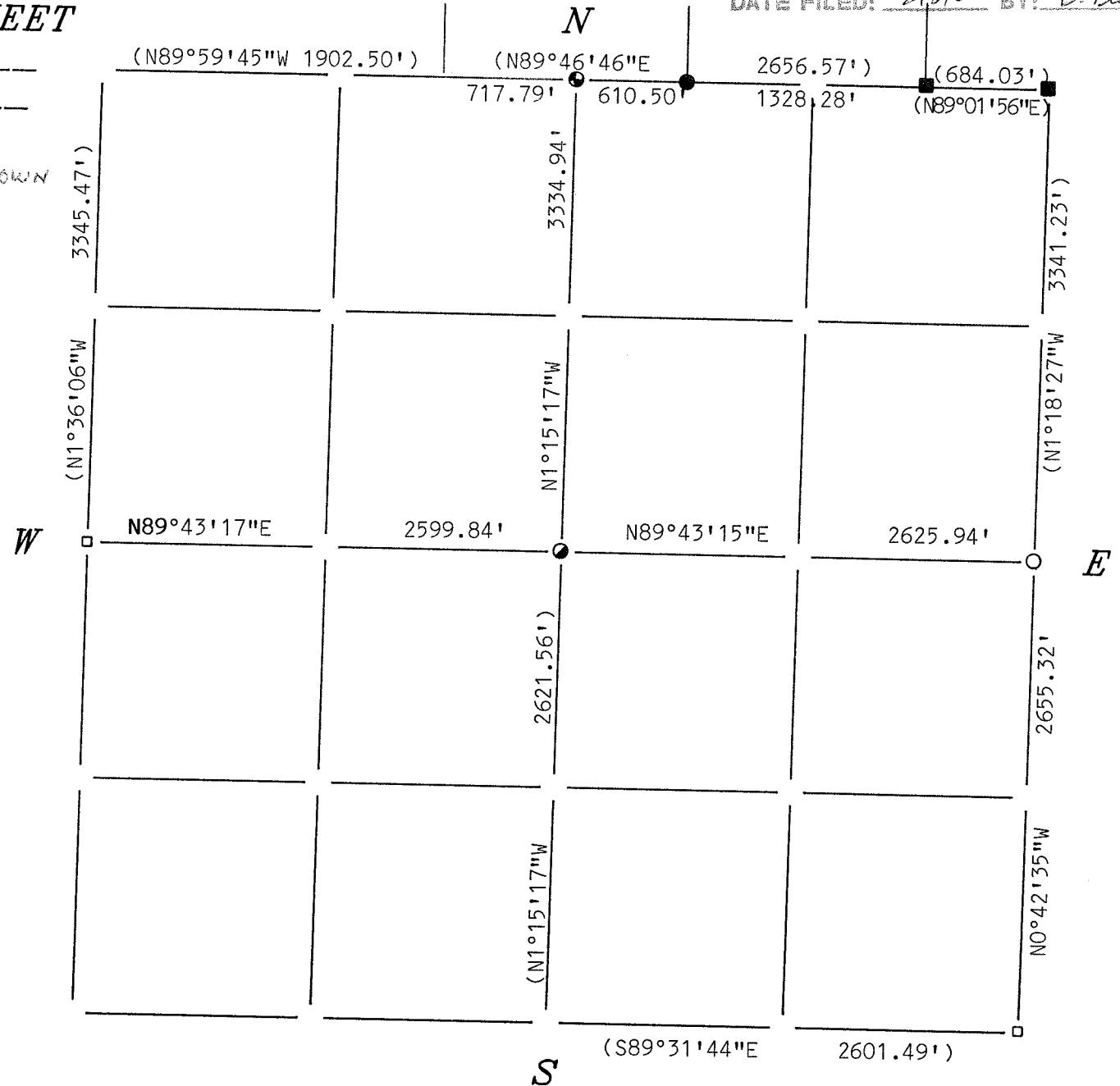
TRAVERSE TARGETS (CIRCLE ONE)

ON TRIBRACHS HANDHELD BOTH

DIRECT ANGLES WERE TURNED 2 TIMES

DIRECT DISTANCES WERE MEASURED (CIRCLE ONE): ONE DIRECTION TWO DIRECTIONS

COMMENTS:



34-12	34-11	34-10	34-9	34-8	34-7	34-6	34-5	34-4	34-3	34-2	34-1
33-12	33-11	33-10	33-9	33-8	33-7	33-6	33-5	33-4	33-3	33-2	33-1
32-12	32-11	32-10	32-9	32-8	32-7	32-6	32-5	32-4	32-3	32-2	32-1
31-12	31-11	31-10	31-9	31-8	31-7	31-6	31-5	31-4	31-3	31-2	31-1
30-12	30-11	30-10	30-9	30-8	30-7	30-6	30-5	30-4	30-3	30-2	30-1