

33-9

1936

INDEX FOR ATTACHED SHEETS

6	5	4	3	2	1
7	8	9	10	11	12
18	17	16	15	14	13
19	20	21	22	23	24
30	29	28	27	26	25
31	32	33	34	35	36
27	32	30	34	35	36

RECORD # 10610
 LANGLADE COUNTY SURVEYORS OFFICE
 DATE FILED: 5/8/03 BY: D.T.

SECTION DWG

These notes were taken for the sub-division of Sections 36, 35, 34, 33, 31, 29, 28, 26, 25, 22, 17, 16 and 15, Township 33 North, Range 9 East of the 4th P. M. Wisconsin.

Original notes, computations of sub-division, Plat, and ties to the interior corners are on file at the U. S. Resettlement Administration office at Rhinelander, Wisconsin.

Survey was made by Clyde H. Parker, 715 Security Building, Minneapolis, Minnesota. Between April 1, and August 1, 1936, for the Resettlement administration.

Members of the survey party were:

Jr. Civil Engineer
Transitman
Rodman
Axeman
Axeman

C. H. Parker
A. J. Seeboth
G. E. Tuttle
O. A. Wallin
Clyde Harvey

T33N-R9E, 4th P.M.

North between Sections 35 and 36.

Starting at the section corner common to sections 35, 36, 1, and 2. Corner is a steel angle iron driven 14" below the surface of the road at the intersection of the centerlines of E-W road and T-road south. This angle iron, according to testimony of residents, has been placed on the spot marking the original wooden stake and has been here for 15 years.

Thence N 2°-03'E 1306.2 ft. to the 1/16 cor. Marked with 1-1/2" iron pipe.

Thence N 2°-03'E 1306.2 ft. to the 1/4 cor. between 35 and 36. A bearing tree of the original survey was found which established the location of this 1/4 corner.

Thence N 2°-22'E 1312.1 ft. to the 1/16 cor. Marked with iron car axle.

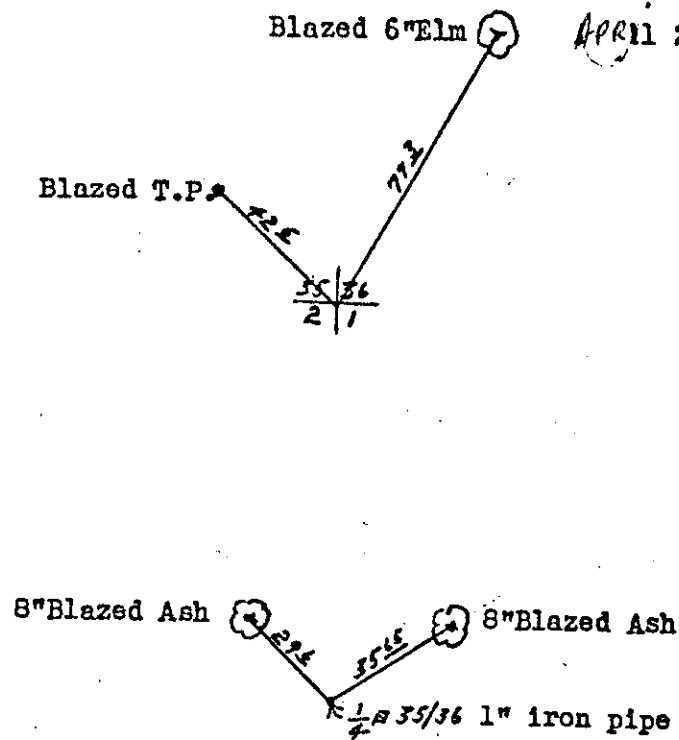
Thence N 2°-22'E 1312.1 ft. to the section corner common to sections 35, 36, 25, and 26. This corner was marked with a wooden stake which has been regarded as the corner for a long time. All bearing trees and evidence of markings of the original survey have been destroyed.

We replaced corner marker with a standard cross brass-topped monument.

Blazed 6" Elm

April 2, 1936

Blazed T.P.



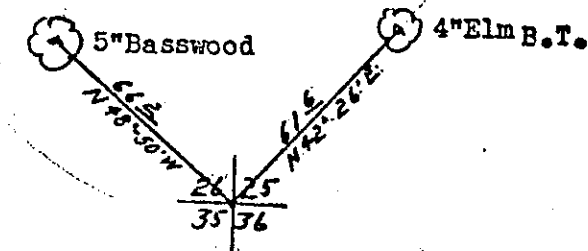
8" Blazed Ash

8" Blazed Ash

1/4" 35/36 1" iron pipe

5" Basswood

4" Elm B.T.



U-R9E, 4th P.M.

Starting at the section corner common to Sections 26, 25, 36, and 35.

Thence N 0°-42'W 1354.5 ft. to the 1/4 cor.
This 1/4 corner was set by Malcolm Hutchinson,
County Surveyor, in 1934 and ^{was} marked with a
wooden stake set flush with the surface.
Replaced wooden stake with standard iron pipe.
Thence N 0°-48'W 1357.5 ft. to the 1/16 cor.

8" Elm blazed

4" Maple B.T.

6" Maple blazed

8" Birch

12" Hemlock

6" Maple

8" Birch

9" Spruce B.T.

6" Elm

Cor.

Sec. Cor.

Boxed Stake Iron Pipe

N 52-17 W

54.5

48.2

41.1

43.3

48.3

42.9

47.2

N 56-55 E

53.8

22.2

57.2

57.6

April 10, 1936

T33N-R9E, 4th P.M.

West between Sections 23 and 26.

Starting at the section corner common to Sections 25, 26, 23, and 24.

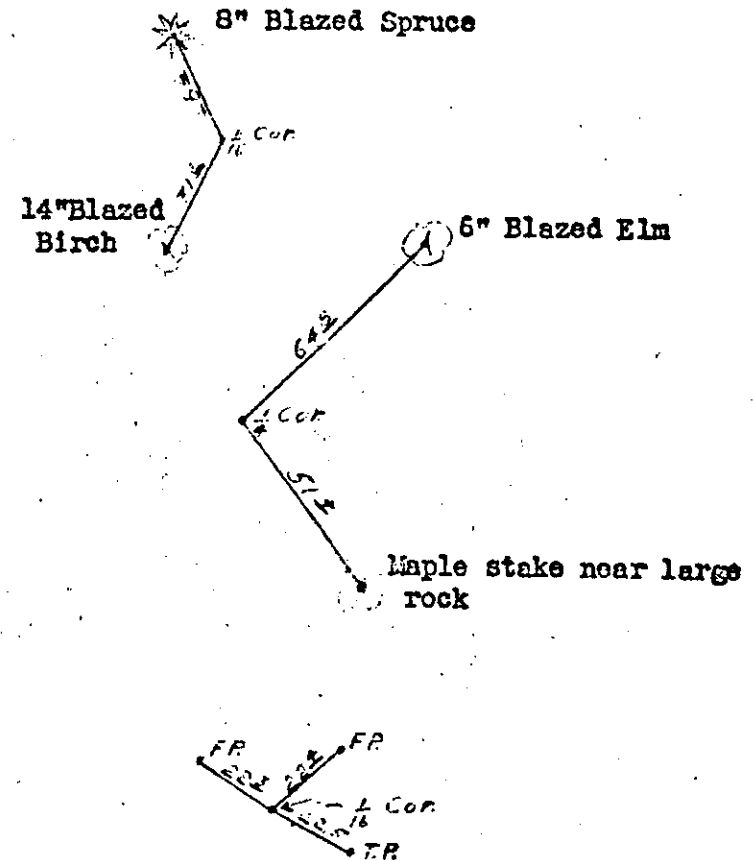
Thence N89-53W 1330.4 to the 1/16 corner.

Thence N89-53W 1330.4 to the 1/4 corner.
This 1/4 corner was completely obliterated and no bearing trees or line blazes could be found. However, a road runs on the line and bends at this point which we established on the centerline of the road half way between the nearest section corners.

Thence 1330.4 to the 1/16 corner.

Thence 1330.4 to the section corner common to sections 22, 23, 26, and 27. This section corner is marked with a large grey stone at the centerline of E-W road and T-road south.

Azimuth of line to this point was determined by observation on Polaris April 17, 1936 at 7:08 P.M. 178°-27' reading from the south.



April 10, 1936

T33N-R9E, 4th P.M.

North between Sections 15 and 16.

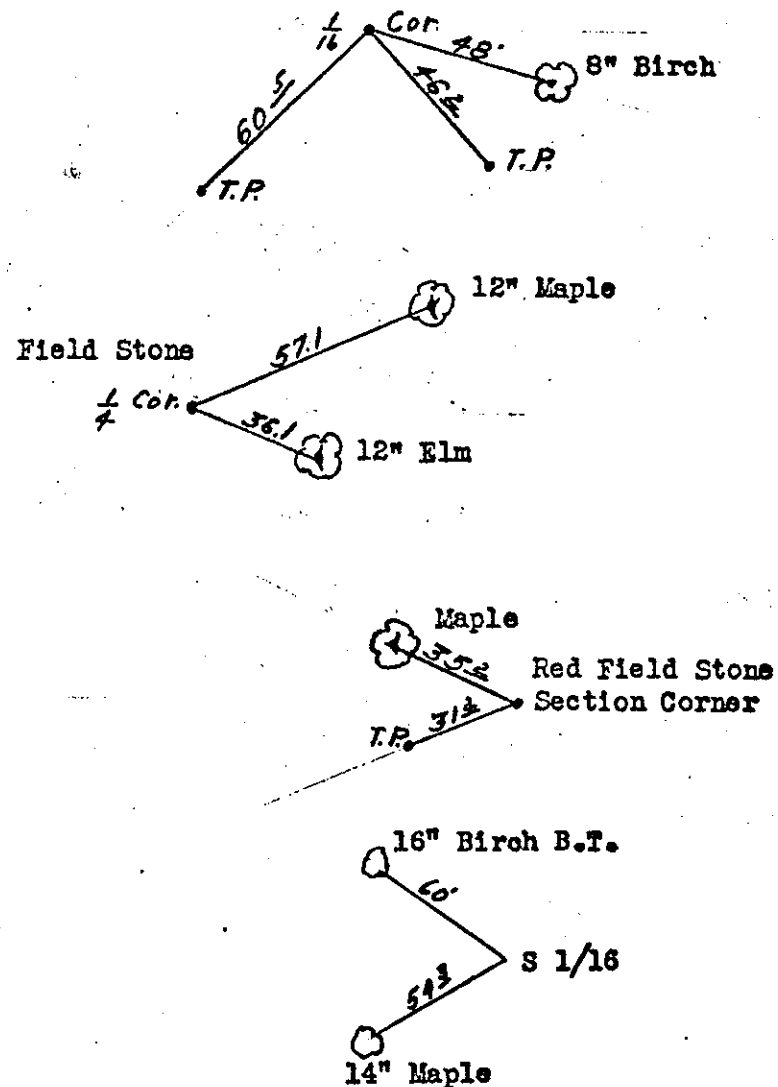
Starting at section corner common to Sections 21, 22, 15, and 16. Corner is a large red stone at centerline X road.

Thence N 2° -41.8'E 1320.3 ft. to 1/16 corner.

Thence N 2° -41.8'E 1320.3 ft. to 1/4 corner. This 1/4 corner is a field stone in the middle of county highway "H" opposite fence on side of cemetery. Buried about 8" deep.

Thence N 0° -41' W 1346.75 ft. to 1/16 corner.

Thence N 0° -41' W 1346.75 ft. to section corner common to sections 9, 10, 15, and 16. Section corner is marked with a large red field stone buried 3" below the surface of the road.



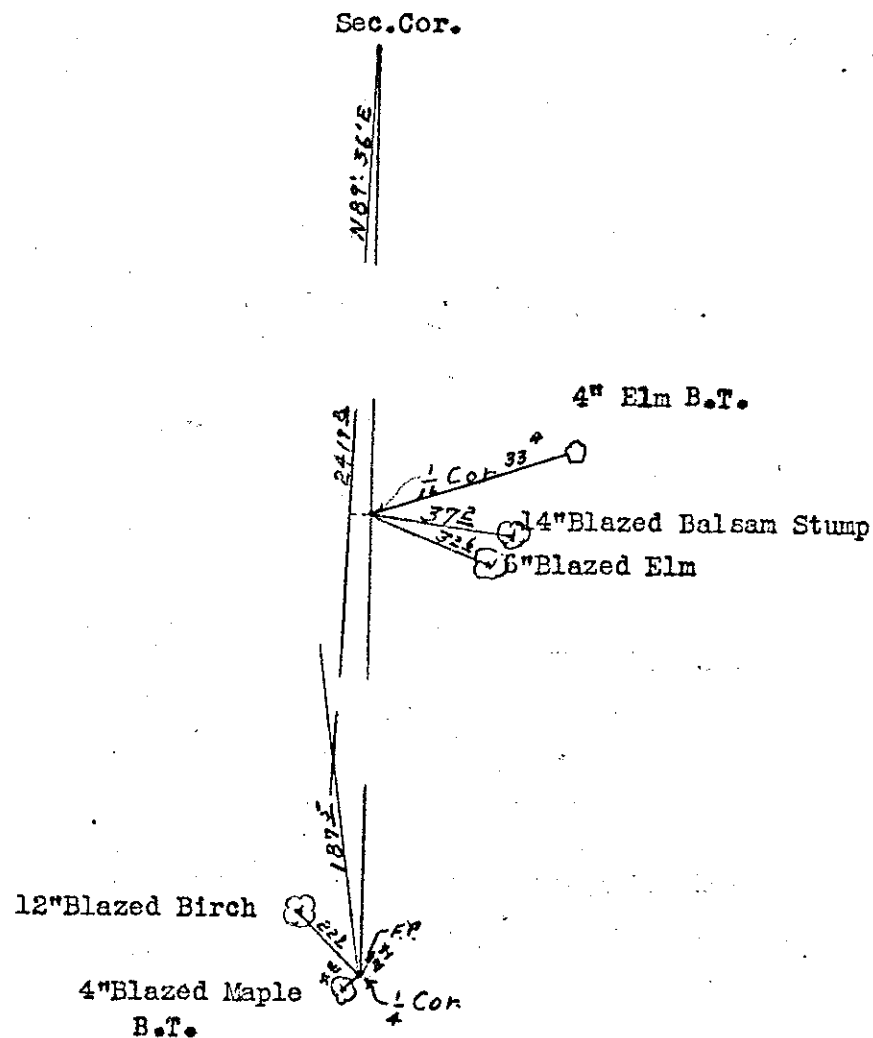
T33N-R9E, 4th P.M.

East between Sections 22 and 15.

Starting at a point at the center of the township, which is a large field stone at the centerline of county road "H" and "CC".

Thence N 89°-36'E 1300.8 ft. to 1/16 corner.

Thence N 89°-36'E 1300.8 ft. to 1/4 corner. This 1/4 corner was marked with a notch cut in the root of a 20" birch. An old rotted wooden stake witnessing the point established by James Reading on a previous survey. No marks of the original survey could be found.



April 11, 1936

T33N-R9E, 4th P.M.

West between Sections 16 and 21.

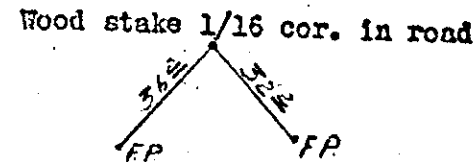
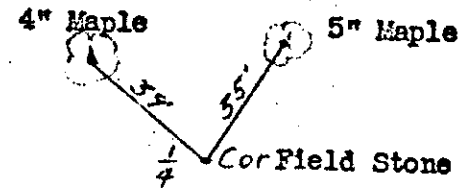
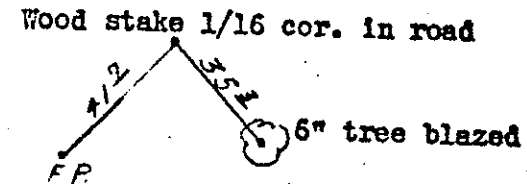
Starting at section corner common to Sections 21, 22, 15, and 16. Section corner is field stone flush with surface at the intersection of centerline of X road.

Thence N 86° -35.2'W 1348.6 ft. to 1/16 corner.

Thence N 86° -35.2'W 1348.6 ft. to 1/4 corner.
This 1/4 corner is a field stone in the center of the road on fence line.

Thence N 87° -20.2'W 1328.8 ft. to 1/16 corner.

Thence N 87° -20.2'W 1328.8 ft. to section corner common to sections 16, 17, 20, and 21. Section corner is large field stone in the middle of the road and on the fence line.



April 18, 1936

T33N-R9E, 4th P.M.

North between Sections 26 and 27.

Starting at the section corner common to sections 27, 26, 34, and 35, which was marked with a square 4x4 wooden stake. Bearing trees could not be found but position is very nearly right according to positions of streams on both sides of the corner as recorded in the original field notes.

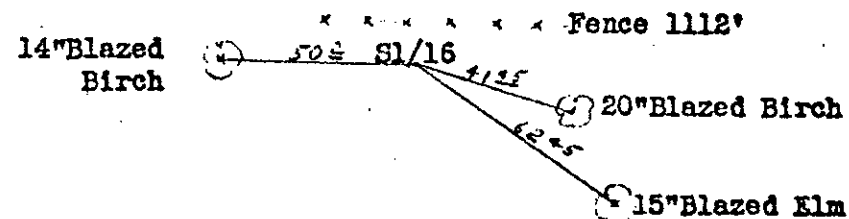
Thence N $0^{\circ}-04'E$ 1240 ft. set S $1/16$ corner.

Thence N $0^{\circ}-04'E$ 1240 ft. to the $1/4$ corner. Bearing determined from line to south 34/35 which was determined by solar observation.

Thence N 2684 ft. along the centerline of the road to the N section corner.



Creek runs West at 675°



$1/4 - 27/26$
Stone in CL of road on
fence line. No other
evidence.

T33N-R9E, 4th P.M.

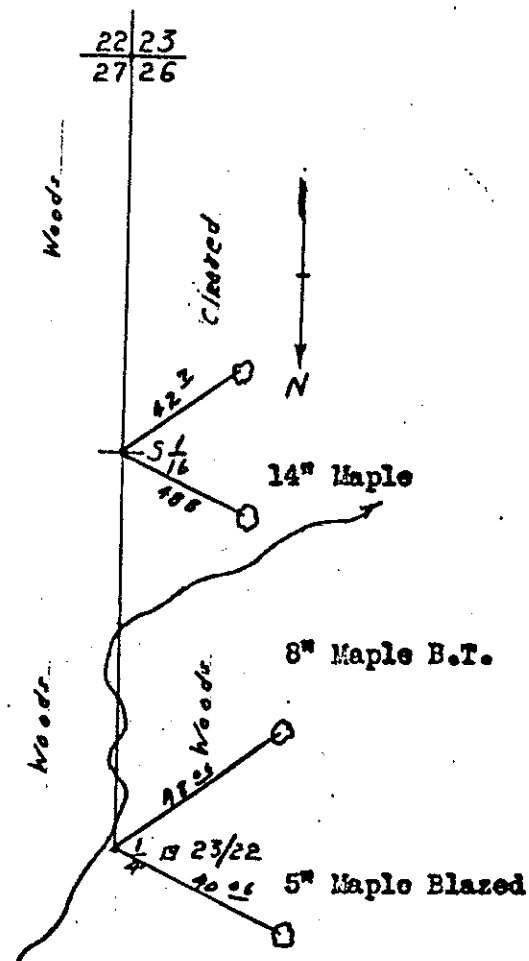
North between Sections 23 and 22.

Starting at the section corner common to sections 22, 23, 27, and 26.

Thence N 2° -16'E 1447.3 ft. to the 1/16 cor.

Thence N 2° -16'E 1447.3 ft. to the 1/4 cor.

The Azimuth of this line was determined by observation on the sun May 7, 1936.



McCloud creek crosses line at 995' N of the S 1/16 and runs nearly on line to the 1/4 corner.

T33N-R9E, 4th P.M.

April 24, 1936

North between Sections 34 and 35.

Starting at section corner at south side between Sections 34 and 35. Section corner is a stone with cross in centerline "H".

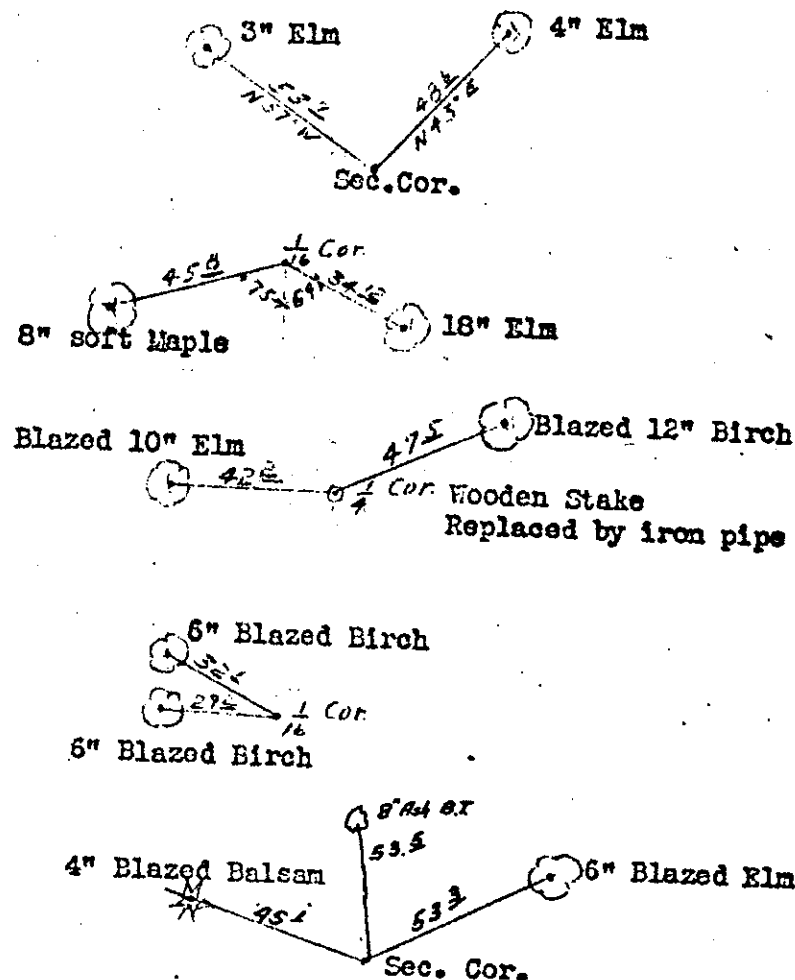
Thence N 2° -36'E 1382.4 ft. to S $1/16$ corner. Marked with an iron pipe.

Thence N 2° -36'E 1382.4 ft. to the $1/4$ corner. This $1/4$ corner was a 4x4 square wooden stake witnessed by blazed and scribed trees. Replaced with an iron pipe.

Thence N 0° -38'E 1356.1 ft. to the N $1/16$ corner. Marked with an iron pipe.

Thence N 0° -38'E 1356.1 ft. to the section corner common to sections 26, 27, 34, and 35. This section corner was marked with a 4"x4" wooden stake and witnessed by blazed trees. Replaced with a brass-topped marker.

The Azimuth of this line was determined by observation on the Sun, April 25, 1936, at 9:17 A.M.



T33N-R9E, 4th P.M.

North between Sections 16 and 17.

Starting at section corner common to Sections 16, 17, 20, and 21, which is a fieldstone in centerline of county road "CC".

Thence N 1° -52.5'E 1343.5 ft. to S $1/16$ cor.

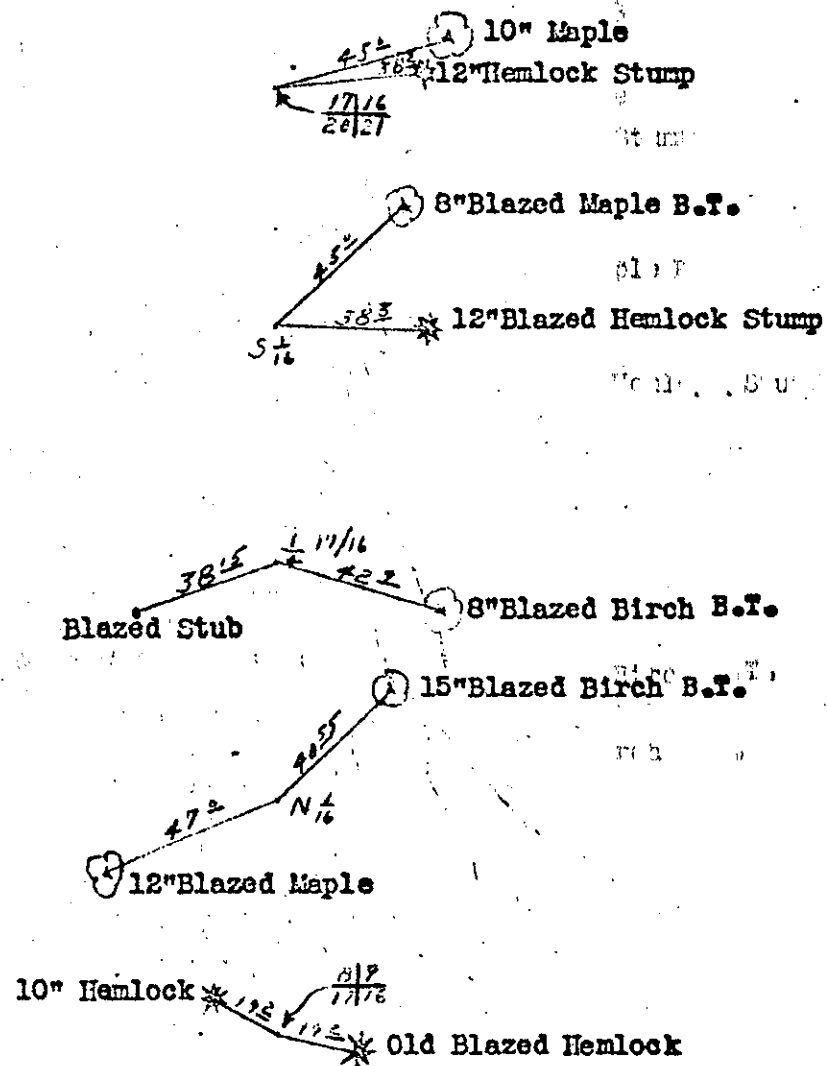
Thence N 1° -52.5'E 1343.5 ft. to the $1/4$ cor. This $1/4$ corner was marked with a 4x4 wood post and referenced by scribed B.T.'s. Replaced by standard iron pipe.

Thence N 7° -17'E 1334.0 ft. to the N $1/16$ cor.

Thence N 7° -17'E 1334.0 ft. to section corner common to sections 8, 9, 17, and 16. This corner was marked with a wooden post and referenced by blazed trees. Replaced by standard brass-topped monument.

Bearings determined by observation on the sun May 8, 1936.

April 28, 1936



T33N-R9E, 4th P.M.

May 13, 1936

West between Sections 16 and 9.

Starting at section corner common to sections 9, 10, 15, and 16, previously described.

Thence N 89°-10'W 2351.4 ft. to the 1/4 corner. This 1/4 corner was marked with a wooden stake and witnessed with scribed trees.

Line west to section corner was not run.

24" Blazed Maple
1/4 cor. wood post 4x4
Iron pipe
8" Blazed Birch
7" Blazed Ash B.T.

T33N-R9E, 4th P.M.

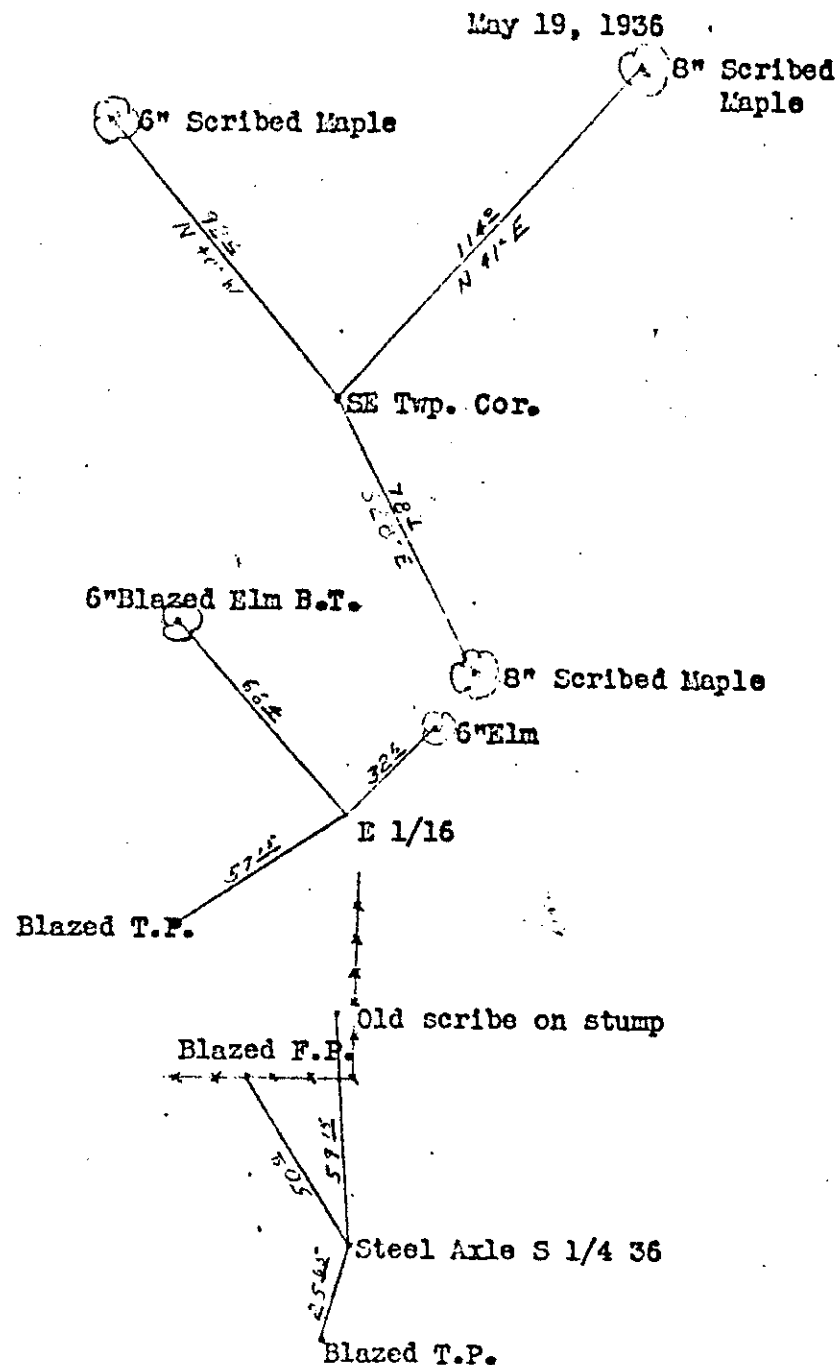
West between Sections 36 and 1 on Twp. line.

Starting at the SE corner, T33N-R9E. Corner was marked with a steel buggy axle driven 6" below the surface of the road. All bearing trees were destroyed and new ones were scribed and placed as shown on opposite page. Replaced axle with standard brass-topped marker.

Thence S 89°-32'W 1315.6 ft. set 1/16 corner.

Thence S 89°-32'W 1315.6 ft. to 1/4 corner. Corner was marked with a steel axle set by Malcolm Hutchinison. One of his scribed stumps was found 59' to the north.

Thence S 89°-32'W 2633.1 ft. to the section corner.



May 19, 1936

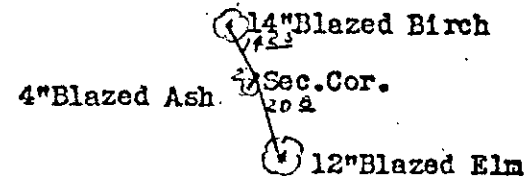
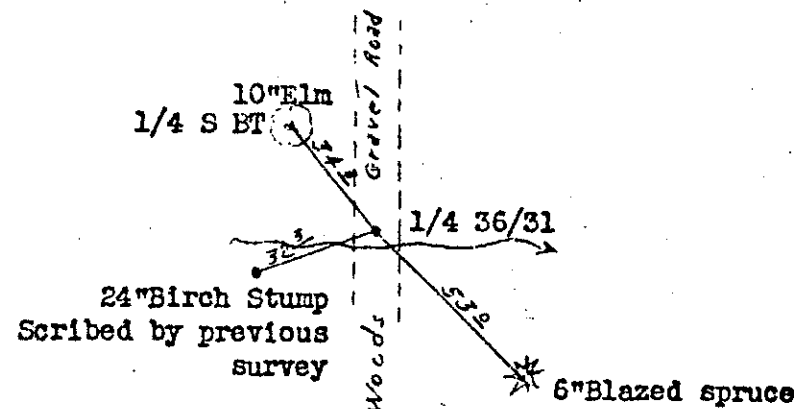
T33N-R9E, 4th P.M.

North between Sections 36 and 31 on
Range Line.

Starting at the SE Twp. corner previously
described.

Thence N 0° -49'W 2657.1 ft. Established
1/4 corner. This corner could not be found.
A road had been built over the probably spot
where the old stake stood, and digging down
through 2 ft. of rock fill revealed nothing.
1/4 corner is marked with an old iron buggy
axle.

Thence N 0° -49'W 2657.1 ft. to the section
corner. This corner was marked by a 4"x 4"
squared stake and referenced by blazed
trees. We replaced wooden stake with a
standard brass-topped marker.



T33N-R9E, 4th P.M.

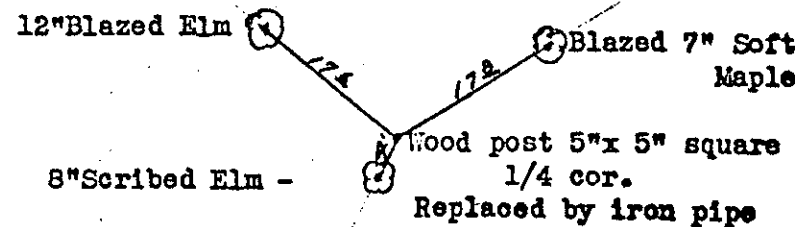
West between Sections 36 and 25.

Starting at the E corner previously described.

Thence to the 1/4 corner. This 1/4 corner was found and re-marked by the County Surveyor a few years ago, according to residents.

Thence N 89°-10'E 2355.16' to the section corner. This section corner was also re-marked by the County Surveyor.

May 21, 1936



Note: This line was not run but calculated from other lines to the corners.

15

T33N-R9E, 4th P.M.

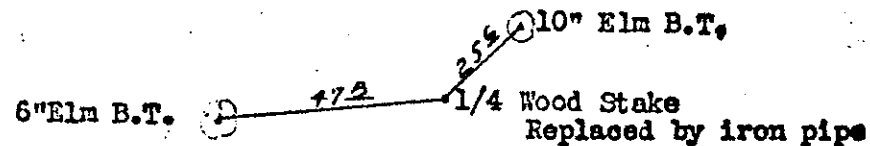
May 25, 1936

East between Sections 35 and 26.

Starting at the section corner common to sections 26, 27, 34, and 35, previously described.

Thence S 86° -33'E 2668.4 ft. to the 1/4 corner. This 1/4 corner was gone, since a long search revealed nothing. We re-established it midway between the section corners to the East and West.

Thence S 86° -33'E 2668.4 ft. to the section corner, previously described.



June 3, 1936

T35N-R9E, 4th P. M.

South between Sections 21 and 22, and
East between Sections 22 and 27.

Starting at the Section corner common to
Sections 16, 15, 21, and 22 previously
described.

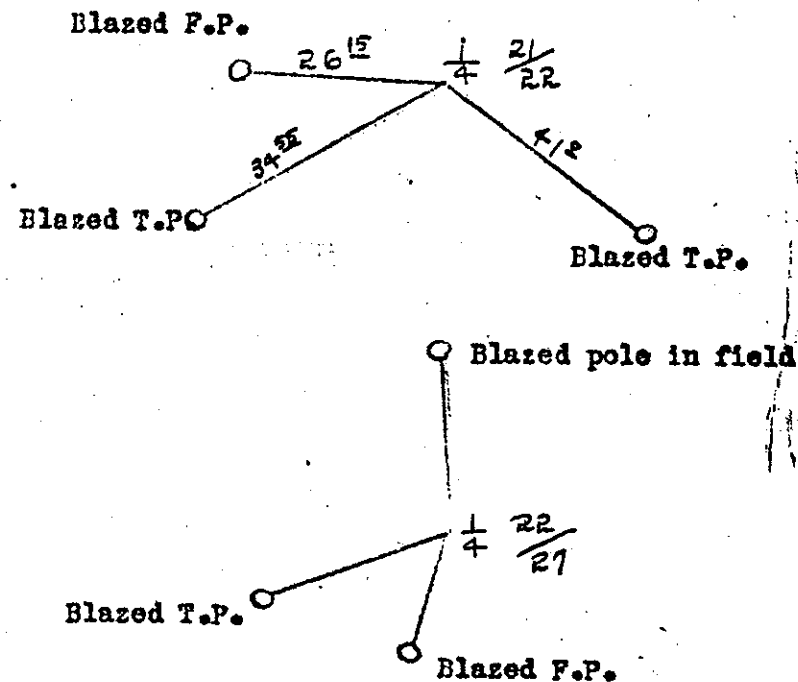
Thence S 0° - 11'W 2681.16 ft. to the 1/4
corner.

This 1/4 corner was marked with an 8" x 10" x 20"
black granite rock in the centerline of county
road "H". A cross was marked on top of the stone.

Note:

This line was not run but was calculated from
other lines connecting these corners.

1/4 corner 22/27. Found 1" iron pipe in center-
line of E-W road 2" below the surface of the road.



T33N-R9E, 4th P.M.

June 11, 1936

North between Sections 17 and 18.

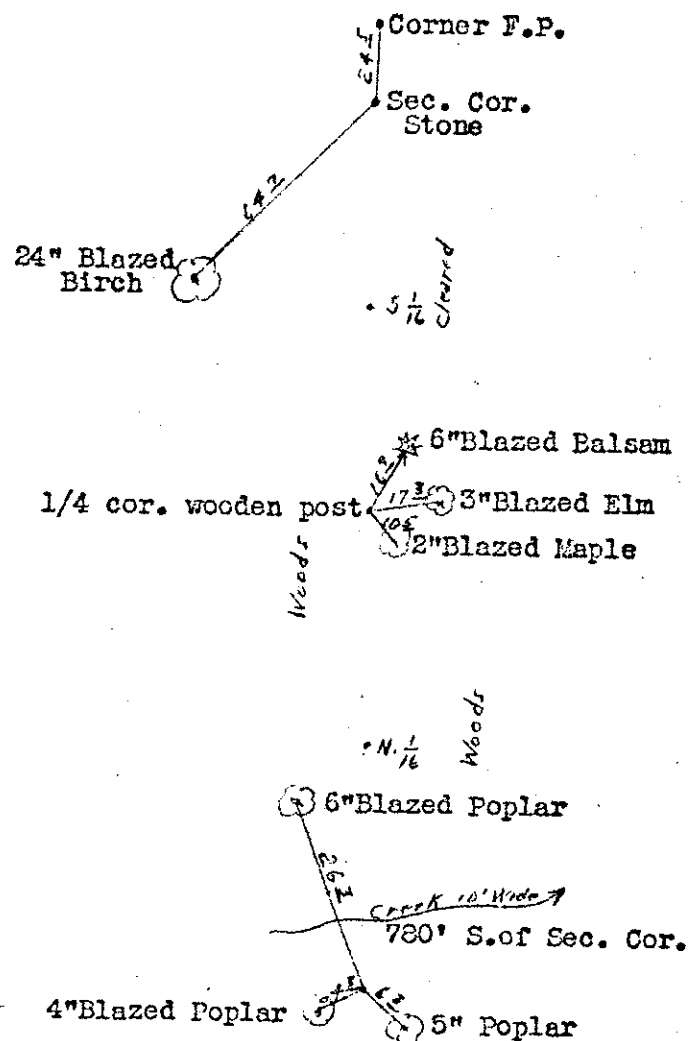
Starting at the section corner common to sections 17, 18, 19, and 20, marked with a large field stone.

Thence S 0° -26'E 1330.25 ft. to the S $1/16$ corner.

Thence S 0° -26'E 1330.25 ft. to the $1/4$ corner.

Thence S 0° -10'E 1342.13' to the N $1/16$ corner.

Thence S 0° -10'E 1342.13' to the section corner. This corner was marked with a squared 4"x 4" wooden stake and witnessed by a small blazed maple. Replaced with a standard brass-topped marker.



T33N-R9E, 4th P.M.

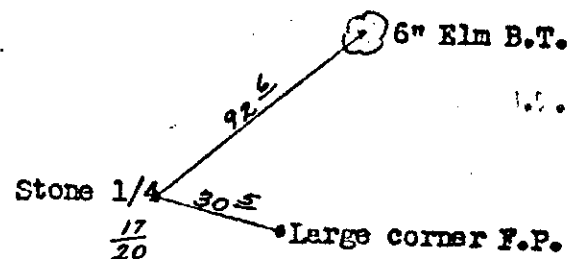
June 12, 1936

East between Sections 17 and 20.

Starting at the west section corner previously described.

Thence N 88° -22'E 2661.08 ft. to the 1/4 corner. This 1/4 corner (between 17 and 20) was gone, but several residents say that the stake stood at the intersection of the cross-road centerlines but was dug up by a layman who was looking for a stone below which he did not find. The mark was never replaced, and careful search reveals no ties. We therefore set a stone at this intersection as it is the most probable position of the original stake. This is a field stone approximately 18" long and 10" across at the bottom. The top end is triangular, each of the three sides being about 3 inches in length.

Thence S 89° -05'E 2693.99 ft. to the east section corner previously described.



T33N-R9E, 4th P.M.

June 13, 1936

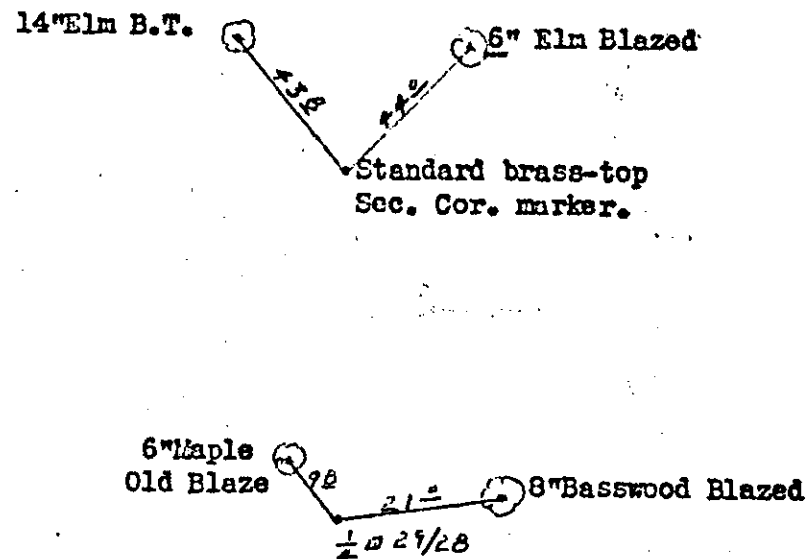
North between Sections 28 and 29.

Starting at the south section corner common to sections 28, 29, 32, and 33. Found one scribed B.T. No ties from previous surveys available. Reliable information from the Town Clerk shows this corner was at the centerline of the road and on the fence line but the stake was removed when the line road was built. A thorough search was made, involving digging across the road a strip about 4' wide and 3' deep but no evidence of any corner marker could be found. We, therefore, placed this corner on the centerline of the road and old fence line, marking it with a standard brass-topped post.

Thence N 0° -54'W 2760.52 ft. to the $1/4$ cor.

The north $1/2$ mile was not run but was calculated to be: N 1° -18'E 2806.6 ft. to the section corner.

This $1/4$ corner was marked with a squared 4x4 wooden stake and witnessed with blazed trees. Replaced by standard steel pipe.



June 15, 1936

T33N-R9E, 4th P. M.

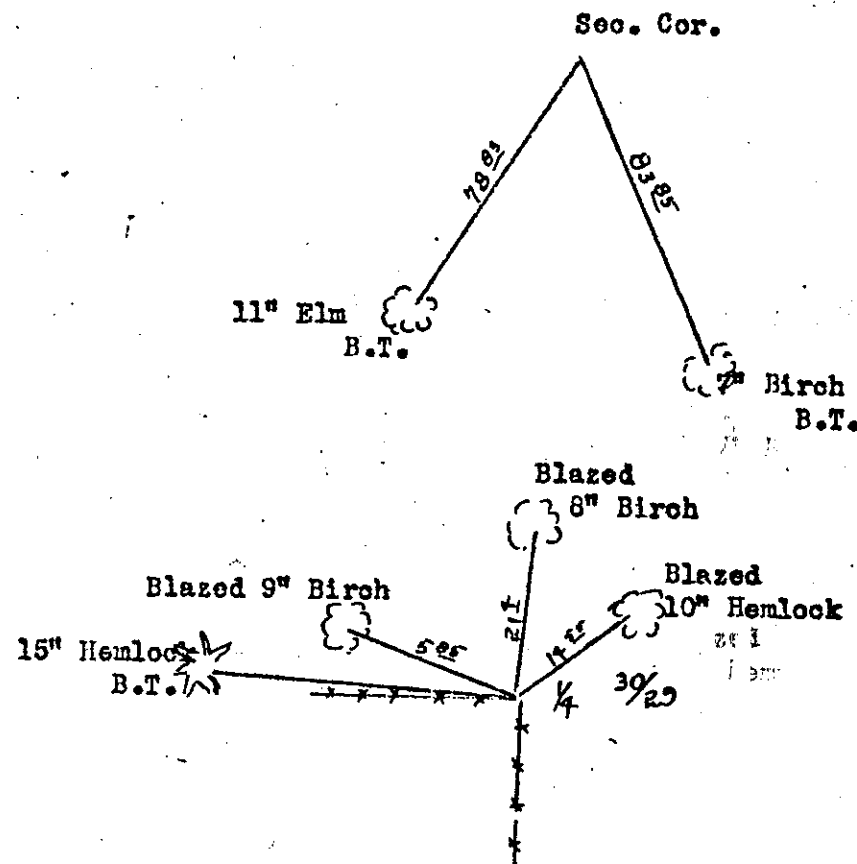
North between sections 30 and 29

Starting at the Section corner $\frac{30}{29}$

This corner was marked with a 6" x 14" x 18" blue granite stone 3 feet below the surface at the centerline of the E-W road. The stone was marked with a cross on top. We moved the stone to one side and replaced it with a standard brass-topped monument.

Thence feet to the quarter corner.

A 4x4 squared wooden post scribed $\frac{1}{4}$ stood at the corner of fences to south and west. We replaced the post with a standard iron pipe.



T33N-R9E, 4th P.M.

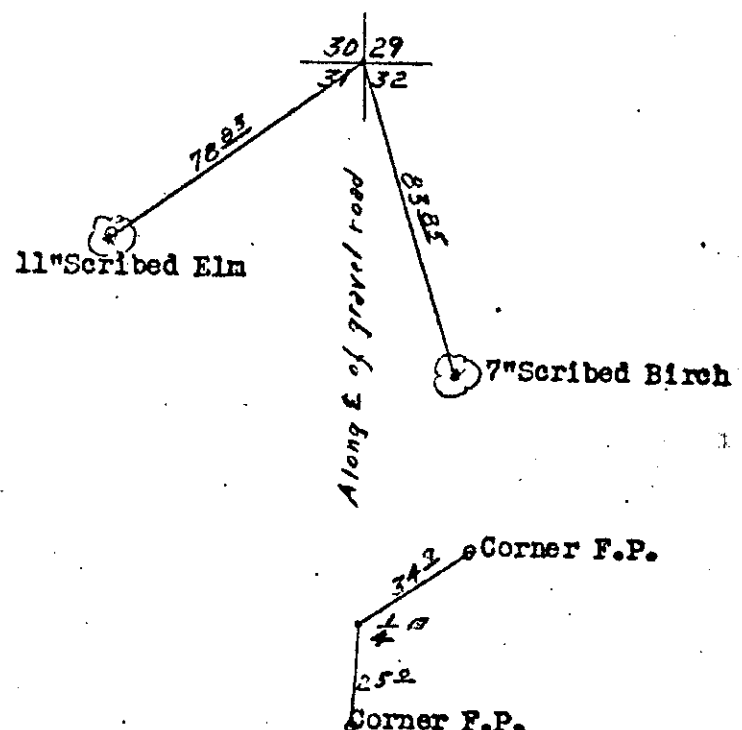
June 17, 1936

East between Sections 29 and 32.

Starting at the section corner common to sections 29, 30, 31, and 32. This corner was marked with a large field stone with a cross on it, buried about two feet below the surface of the road and referenced to a scribed pine stump 176 links SE. We tipped the stone over and replaced it with a standard brass-topped marker, also tied it to new bearing trees.

Thence N $88^{\circ}-36'W$ 2604.7 ft. to the $1/4$ corner. This $1/4$ corner was marked with a blue stone set 6" below the surface of the road at the intersection of the centerlines. A cross was chisled on top of the stone.

Thence N $88^{\circ}-40'W$ 2603.2 ft. to the section corner, previously described.



29	28
32	33

T33N-R9E, 4th P.M.

East between Sections 28 and 33.

Starting at the section corner previously described.

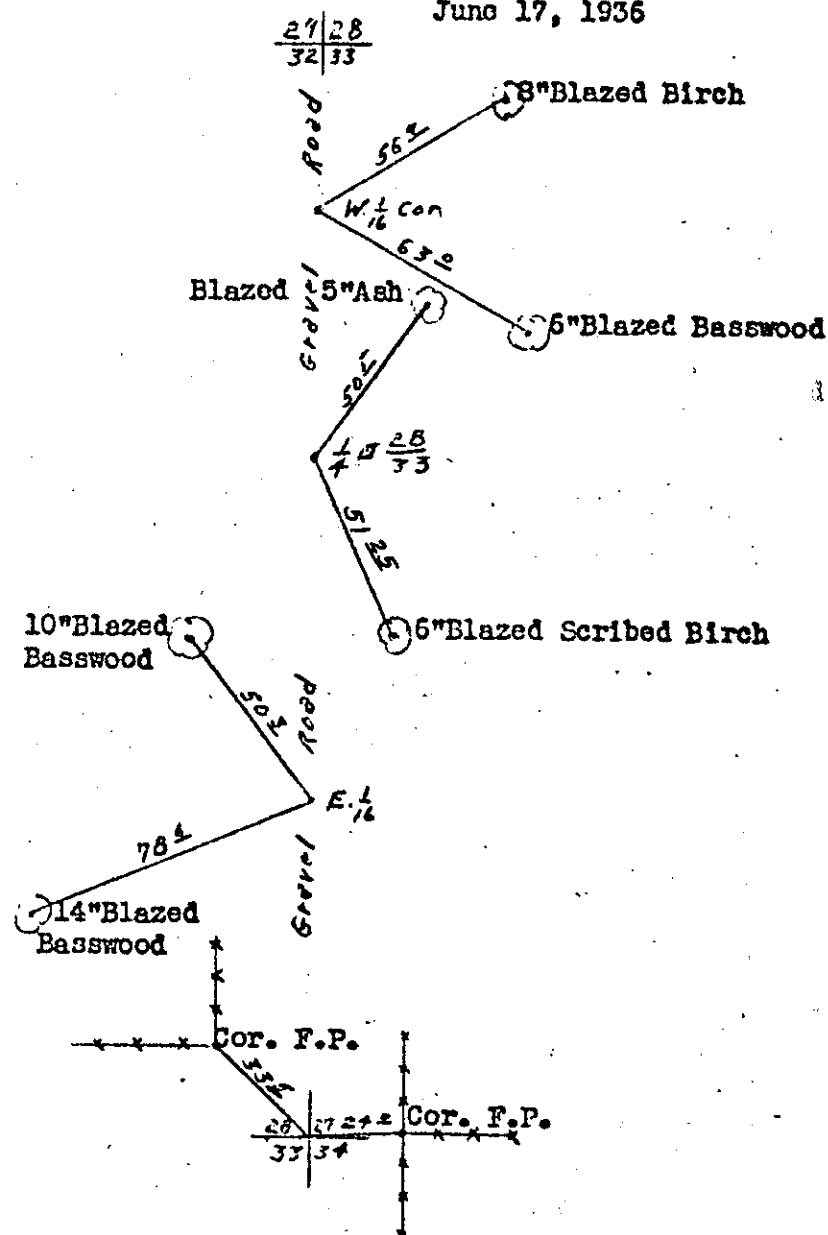
Thence N 89°-16'E 1346.2 ft. to the W 1/16 corner.

Thence N 89°-16'E 1346.2 ft. to the 1/4 corner. This 1/4 corner was marked with a coarse granite stone set 2" below the surface of the centerline of the E-W road. Marked 1/4 on top of stone and scribed one B.T.

Thence S 89°-46'E 1284.1 ft. to the E 1/16 corner.

Thence S 89°-46'E 1284.1 ft. to the section corner, common to sections 27, 28, 33, and 34. This corner was marked with a 9"x 18" x 22" white stone 1" above the surface of the centerline of T-road west. We lowered the stone 6" below the surface of the road and chisled a cross on top.

June 17, 1936



T33N-R9E, 4th P.M.

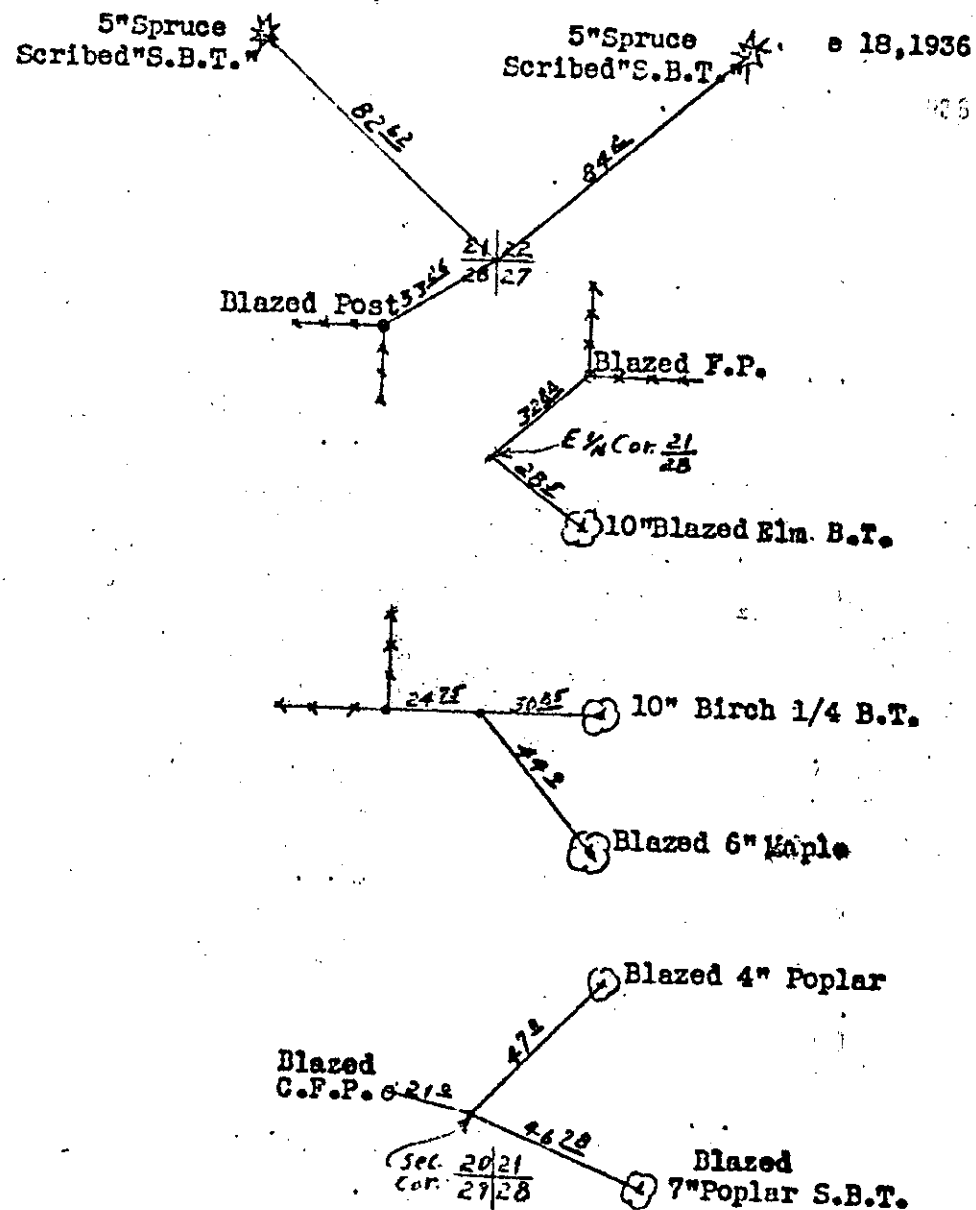
West between Sections 21 and 28.

Starting at the section corner common to sections 21, 22, 27, and 28, previously described.

Thence N 87° -01'W 1318.5 ft. to the E 1/16 corner.

Thence N 87° -01'W 1318.5 ft. to the 1/4 corner. This 1/4 corner was marked with a rotted wooden stake below the surface of the road and referenced with a birch B.T. We removed the stake and replaced it with a 12x17x31" red field stone set 6" below the surface of the road and marked 1/4 on top.

Thence N 88° -39'W 2603.2 ft. to the section corner common to sections 20, 21, 28, and 29. This corner was marked with a stake we found rotted and nearly destroyed. We replaced rotted stake with a standard brass-topped marker set 6" below the surface of the road.



T33N-R9E, 4th P. M.

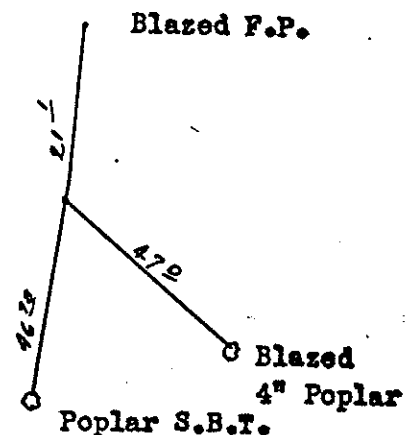
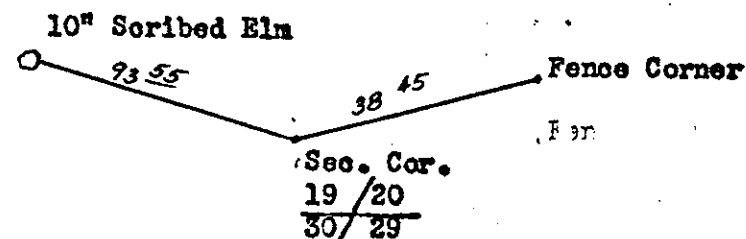
June 18, 1936

West between Sections 20 and 29

Starting at the section corner common to sections 19, 20, 29, and 30. Found parts of old stake 30" below present grade at centerline of cross roads. Replaced with standard brass topped marker set 6" below the centerline of the road.

Thence N 89° -26'W 2671.50 ft. to the $1/4$ cor. Found old birch B.T. Using tie from B.T. found stake as described by Webly's survey in 1903. Stake was at centerline of cross road. Replaced stake with an 8" x 12" x 27" blue stone 4" below the surface of the road. Marked $1/4$ on top of the stone.

Thence N 89° -26'W 2633.70 ft. to the section corner common to sections 20, 21, 29, and 28, previously described.



T33N-R9E, 4th P.M.

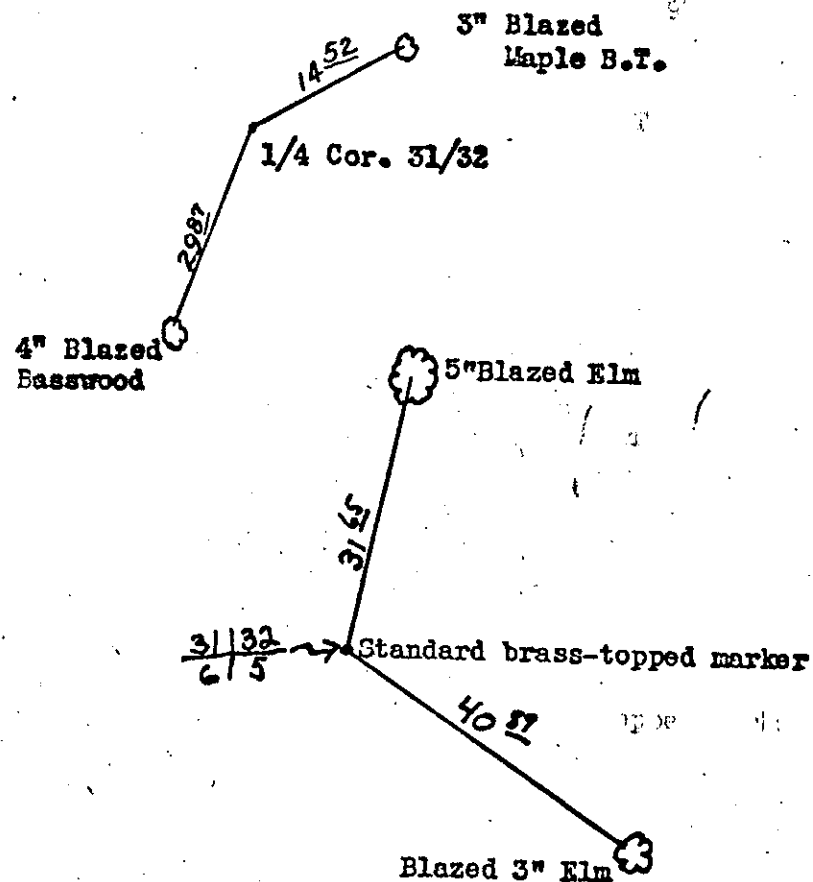
June 19, 1936

South between Sections 31 and 32.

Starting at the section corner previously described.

Thence S 0° -16'W 2728.04 ft. to the 1/4 cor.
A thorough search for this 1/4 corner revealed nothing so it was necessary to re-establish it. Marked with standard steel pipe.

Thence S 0° -16'W 2728.04 ft. on the same line to the section corner common to sections 31, 32, 6, and 5. This corner marker was a stone that had heaved up with the frost and was thrown away by the patrollman. Information from a member of the party that surveyed the roads intersecting here indicates that the stone was used to establish the centerline of the roads. We, therefore, set this corner at the intersection of the road centerlines, marking it with a standard brass-topped marker.



T33N-R9E, 4th P.M.

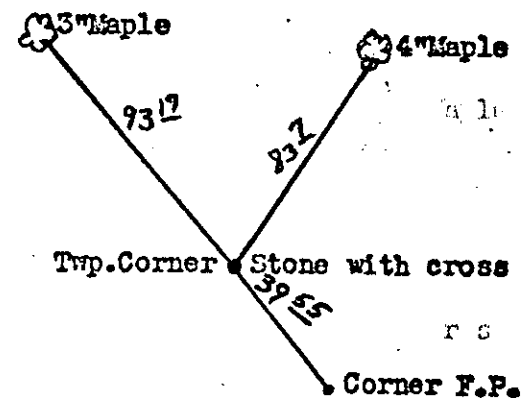
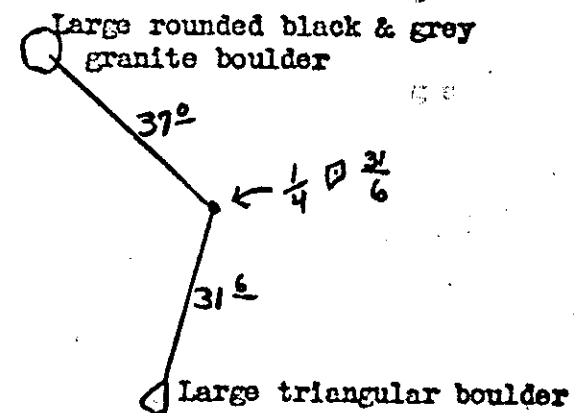
West between Sections 31 and 6.

Starting at the section corner previously described.

Thence S $89^{\circ}-28'W$ 2460.00 ft. to the $1/4$ corner. This $1/4$ corner was obliterated, but a land owner in section 6 showed us a birch stump which he said had been a bearing tree. He knew where the stake had been before the road was graded. The road bends at the point he indicated. Mr. Holtz who staked out the road says he moved the centerline two ft. north from its original position. We, therefore, set this $1/4$ corner 2' south of the present centerline of the road at the spot indicated by the bearing stump.

Thence N $82^{\circ}-06'W$ 2758.75 ft. to the SW Township corner, sections 31, 36, 6, and 1. This corner could not be found during a search involving digging up the intersection of the cross road to a depth of two feet. Various residents say the stone was situated at the centerline of the cross roads but was heaved up by the frost. We, therefore, set a stone at the road centerline intersection, marking a cross on the top.

June 20, 1936



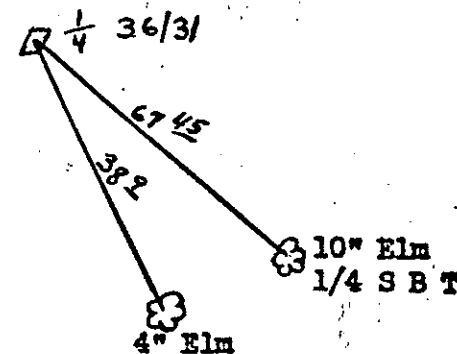
T63M-R9E, 4th P.M.

June 22, 1936

North between Sections 36 and 31.

Starting at the section corner previously described.

Thence N 5°-55'E 2647.16 ft. to the 1/4 corner. This 1/4 corner was marked with a cut stone which had heaved up but was still in place. We lowered it 8" below the surface. The top had broken off and was laying in the ditch. We cut a cross on top of the portion remaining in the ground.



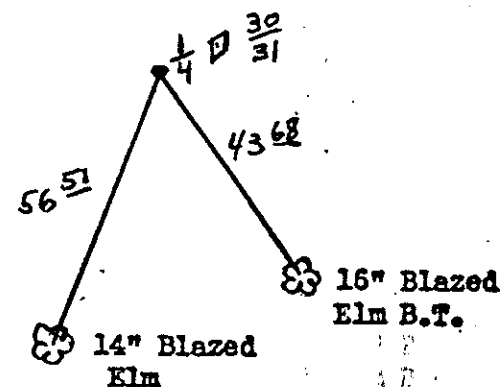
T33N-R9E, 4th P.M.

June 23, 1936

West between Sections 30 and 31.

Starting at the section corner previously described.

Thence S $88^{\circ}-39'W$ 2720.0 ft. to the $1/4$ corner. This $1/4$ corner mark was completely obliterated. Mr. Steger, Town Clerk, says he remembers seeing the stake at the road centerline opposite a mound of earth. The road bends at this point. We, therefore, set this corner at the spot indicated, marking it with a standard iron pipe.



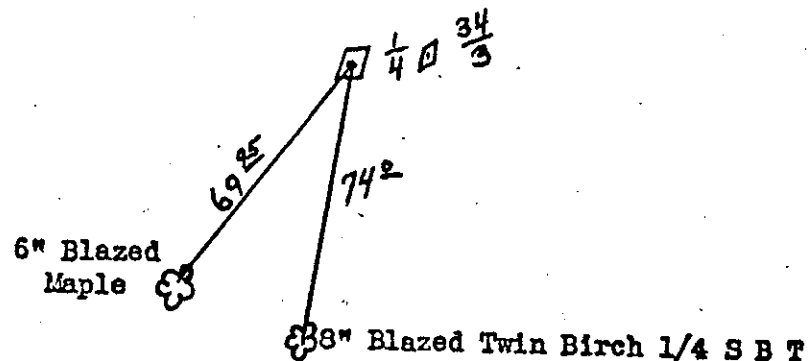
T33M-R9E, 4th P.M.

June 23, 1936

West between Sections 34 and 3.

Starting at the section corner previously described.

Thence S 88° -34'W 2645.2 ft. to the 1/4 corner. This 1/4 corner was missing and digging in the road revealed nothing. Mr. Webster, an old timber cruiser, located the position, finding an old blazed line in the woods which crosses the road where it bends sharply. We set an iron pipe on the centerline of the road where the blazed line crosses.



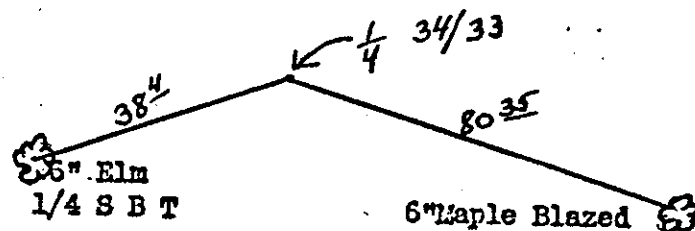
TSSN-R9E, 4th P.M.

June 23, 1936

North Between Sections 33 and 34.

Starting at the 1/4 corner 33/34 which was marked with a field stone buried 6" below the surface of the road at the centerline and fence line from east and west.

Thence N 0°-35'E 2661.1 ft. to the section corner previously described.



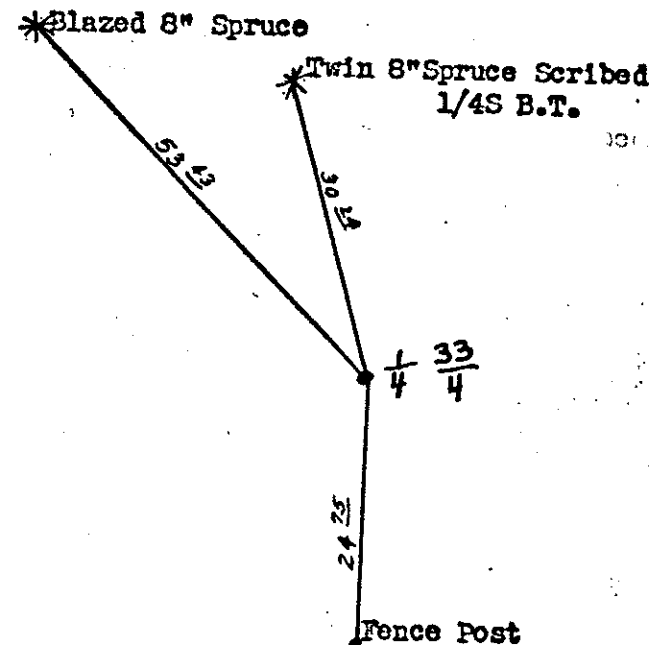
T33M-R9E, 4th P.M.

June 23, 1936

West between Sections 33 and 4.

1/4 corner between sections 33 and 4.
Mark was lost in grading road. Re-set
on road centerline at intersection of
N. S. fence lines.

Note: This corner was tied into transit
traverse. Not run on the section
line and no attempt was made to find
the section corner common to sections
33, 34, 4, and 3.



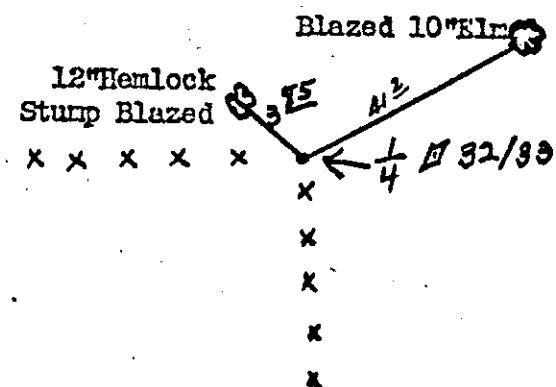
T53N-R9E, 4th P.M.

June 24, 1911

South between Sections 32 and 33.

Starting at the section corner previously described.

Thence S 0°-29'W 2667.99 to the 1/4 corner.
This 1/4 corner between sections 32 and 33
was marked with a 4" x 4" squared stake
scribed 1/4 S. set at a fence corner.
Re-placed stake with standard steel pipe.



T33N-R9E, 4th P.M.

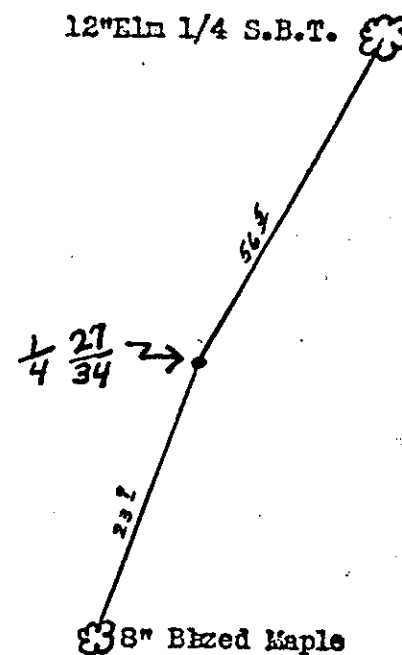
June 24, 193.

East between sections 27 and 34.

Starting at the section corner previously described.

Thence S $87^{\circ}-06'E$ 2620.48 ft. to the 1/4 corner. This 1/4 corner was marked with a squared wooden stake driven in the center of an old stump. Replaced with an iron pipe.

Thence S $88^{\circ}-48'E$ 2647.42 ft. to the section corner previously described.



T331-R9E, 4th P.M.

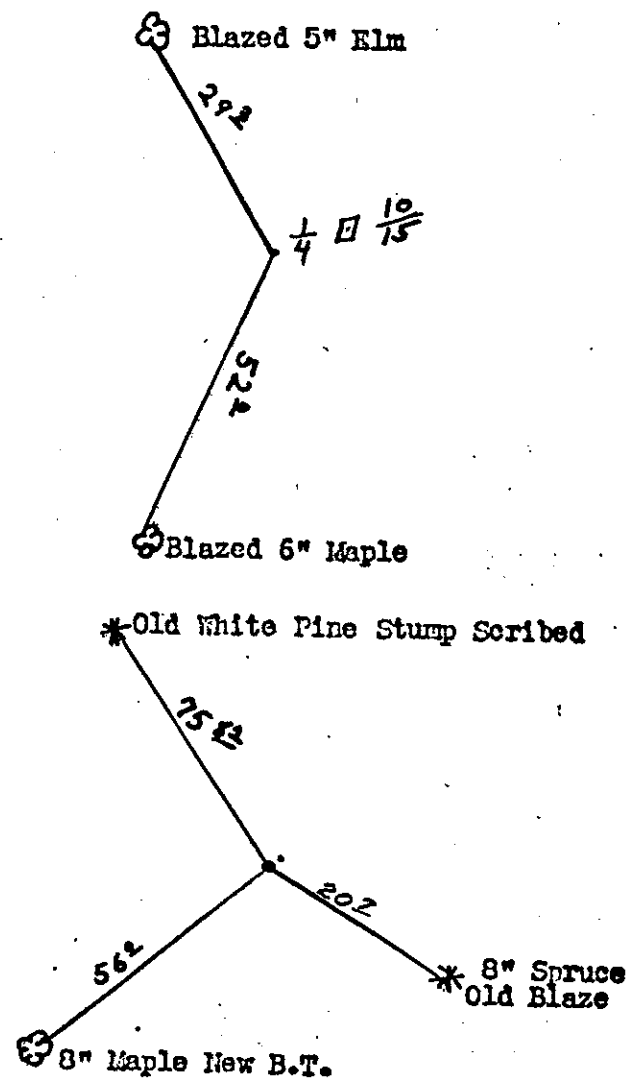
June 26, 1936

East between Sections 15 and 10.

Starting at the section corner previously described.

Thence S 88°-55'E 2508.78 ft. to the 1/4 corner. Road building operations have destroyed the original stake at this 1/4 corner. Found a blazed tree apparently witnessing a corner in the road but it was 265' too far west for the half distance between the section corners. We therefore abandoned the blaze and re-established the corner on line half way between the section corners.

Thence S 88°-55'E 2508.79 ft. to the section corner. This section corner was marked with a 15" x 15" x 24" field stone which had been dug out and was lying in the ditch. It was witnessed by a scribed pine stump and a blazed spruce. We restored the stone to its original position.



June 29, 1936

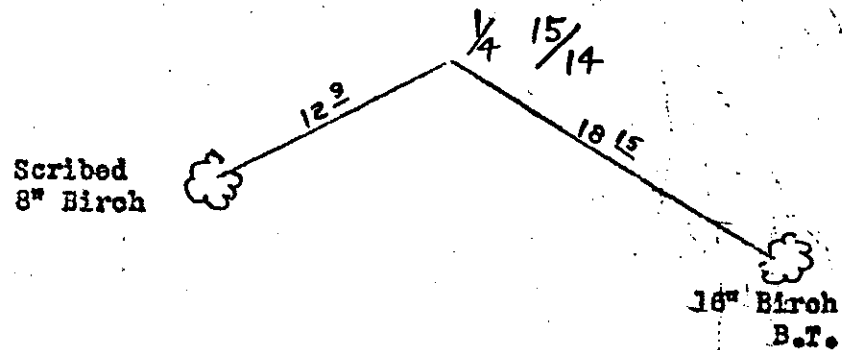
T33N-R9E, 4th P. M.

South between Sections 15 and 14

Starting at the Section corner previously described.

Thence S 0° - 07° W 2600.77 ft. to the $1/4$ corner.

This $1/4$ corner was marked with a squared wooden stake witnessed by an old scribe on an 8" Birch and a blaze on a 16" Birch. We scribed the 16" Birch and placed a new stake at the $1/4$ corner scribing it $\frac{1}{4}$ S.



T33N-R9E, 4th P.M.

North between Sections 28 and 27.

Starting at the section corner common to sections 28, 27, 33, and 34, previously described.

Thence N 0°-59'W 2658.4 ft. to the 1/4 corner. This 1/4 corner was marked with a 9"x 14"x 18" white stone in centerline of T-road east, set 2" below the surface of the road. Marked a cross on top.

Thence N 0°-56'E 2685.4 ft. to the section corner. This section corner, common to sections 21, 22, 27, and 28, was marked with a 12x18x27" red stone 12" below the surface of the intersection of X road. We marked a cross on top of the stone and scribed two B.T.'s.

28	27
33	34

