

LANGLADE COUNTY

SECTION 12, T. 34 N., R. 10 E.

SECTION INFORMATION SHEET

BY: DEAN WILLIAMS

DATE: 7/18/2003

N

RECORD # 10620

LANGLADE COUNTY SURVEYORS OFFICE

DATE FILED: 7/21/03 BY: D. FLUSTY

- NAIL SET
- △ NAIL FOUND
- RR SPIKE SET
- ⊙ RR SPIKE FOUND
- IRON PIPE SET (SIZE)
- ⊕ IRON PIPE FOUND (SIZE 4"BC)
- 3/4" L.R. FOUND

☒ STONE W/X ON TOP

IT WILL BE ASSUMED THAT ALL DIMENSIONS SHOWN ARE COMPUTED DIMENSIONS, UNLESS THEY ARE MARKED: "(D)" WHICH STANDS FOR DIRECT MEASUREMENT.

FOR US TO USE THE DIRECT MEASUREMENTS IN A LEAST SQUARES ADJUSTMENT, PLEASE COMPLETE THE FOLLOWING:

THEODOLITE ACCURACY

MANUFACTURERS EDM ACCURACY

SPECIFICATION +- mm +- ppm

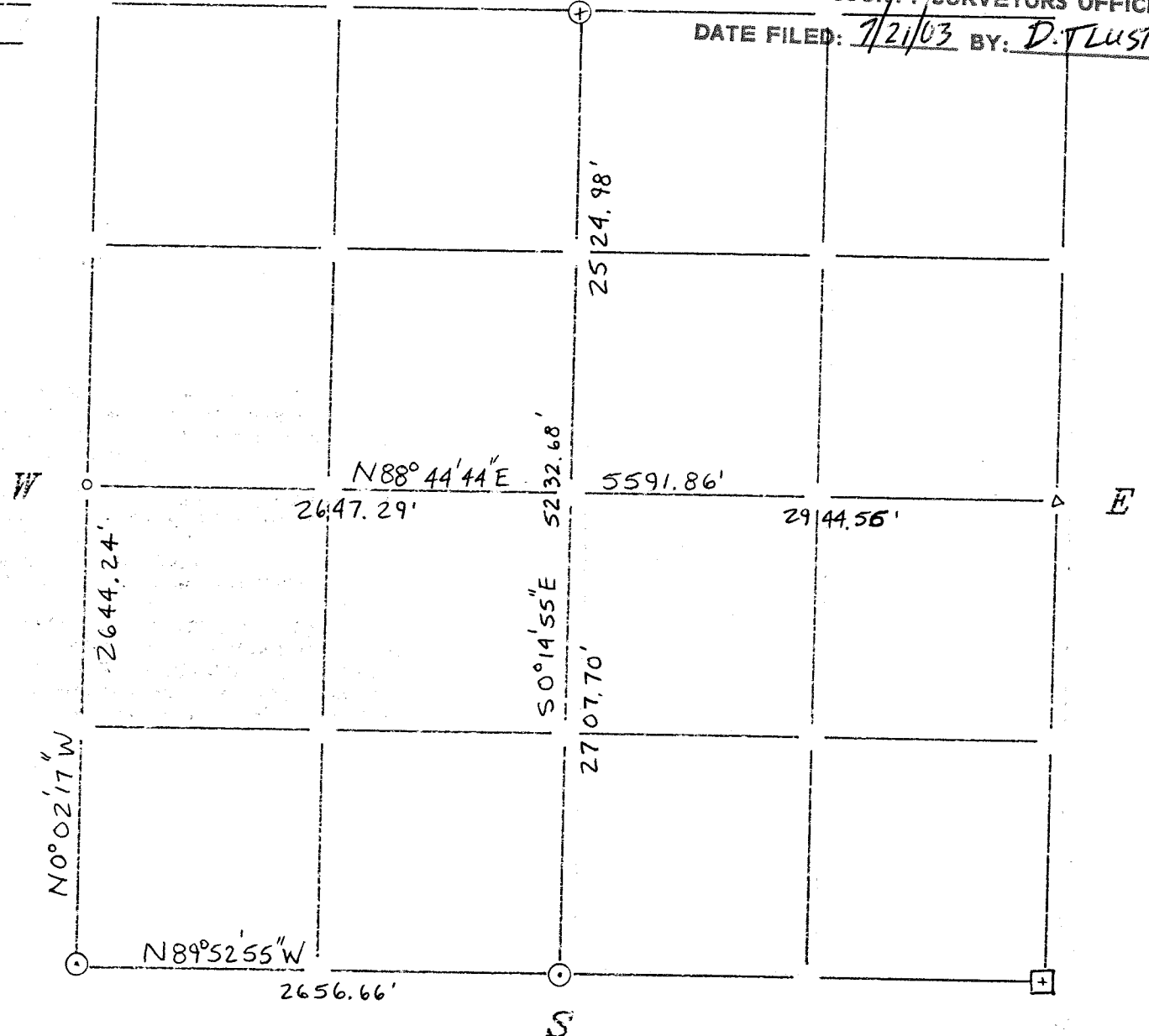
TRAVERSE TARGETS (CIRCLE ONE)

ON TRIBRACHS HANDHELD BOTH

DIRECT ANGLES WERE TURNED TIMES

DIRECT DISTANCES WERE MEASURED (CIRCLE ONE): ONE DIRECTION TWO DIRECTIONS

COMMENTS:



30-11	30-12	31-9	31-10	31-11	31-12	31-13	31-14	31-15	32-1	32-10	32-11	32-12	32-13	32-14	32-15	33-1	33-10	33-11	33-12	33-13	34-9	34-10	34-11	34-12
-------	-------	------	-------	-------	-------	-------	-------	-------	------	-------	-------	-------	-------	-------	-------	------	-------	-------	-------	-------	------	-------	-------	-------