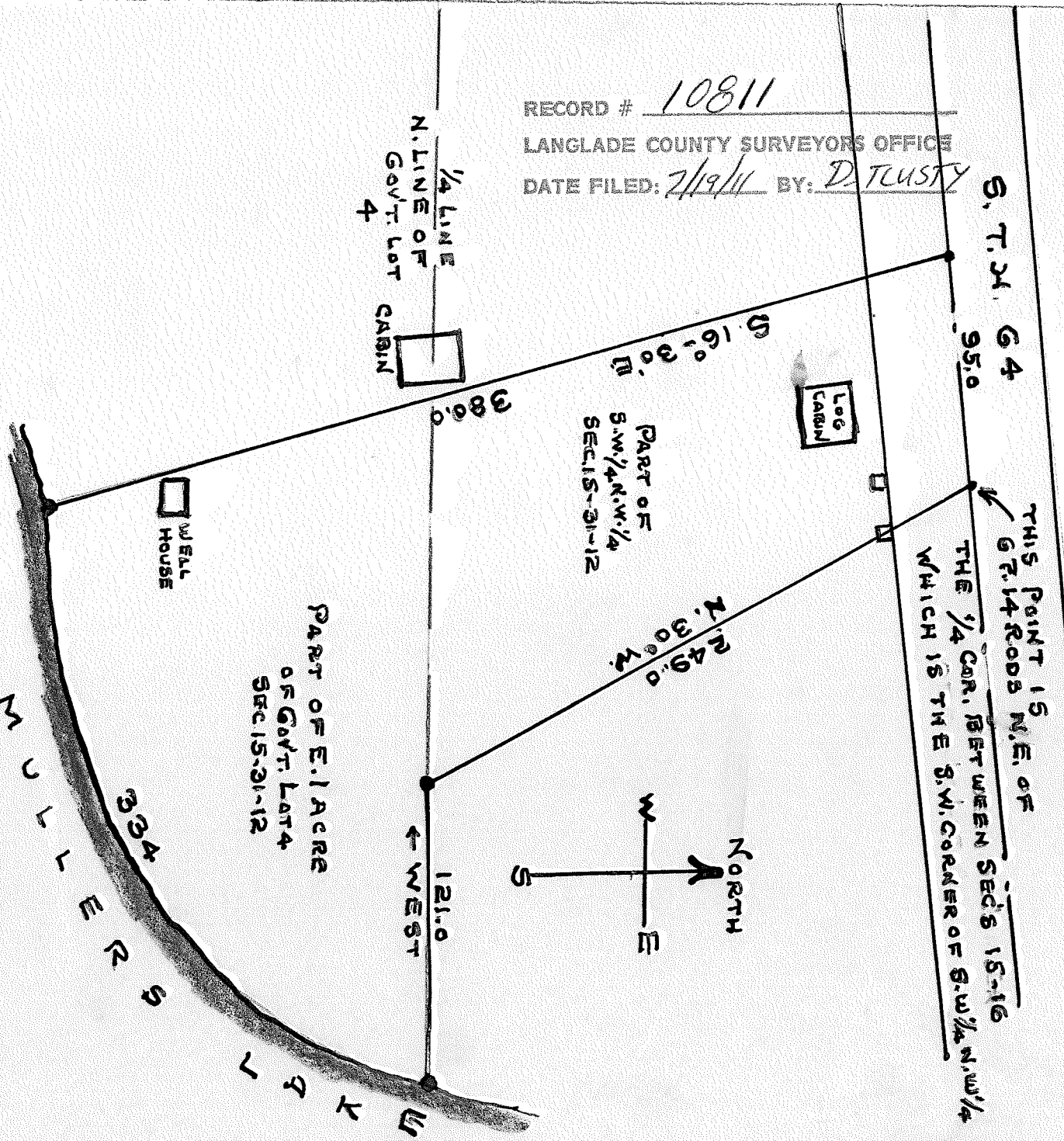


RECORD # 10811  
 LANGLADE COUNTY SURVEYORS OFFICE  
 DATE FILED: 7/19/11 BY: D. TUSTY



A part of the S.W. 1/4 N.W. 1/4 of section 15-31-12 and the east one acre of Gov't. 4 in section 15-31-12 described as:- Starting at a point in the center of State highway 64 which point is 67.14 rods north east of the quarter corner between sections 15 and 16, thence S.W. along center line of highway for 95.0 feet, thence south 16 degrees and 30 minutes east for 380.0 feet to the shore of Mullers Lake, thence northeasterly along the lake shore for 334.0 feet to the quarter line which is the north line of Gov't. 4, thence west along the quarter line for 121.0 feet, thence north thirty degrees west for 249.0 feet to the center line of the highway, place of beginning.