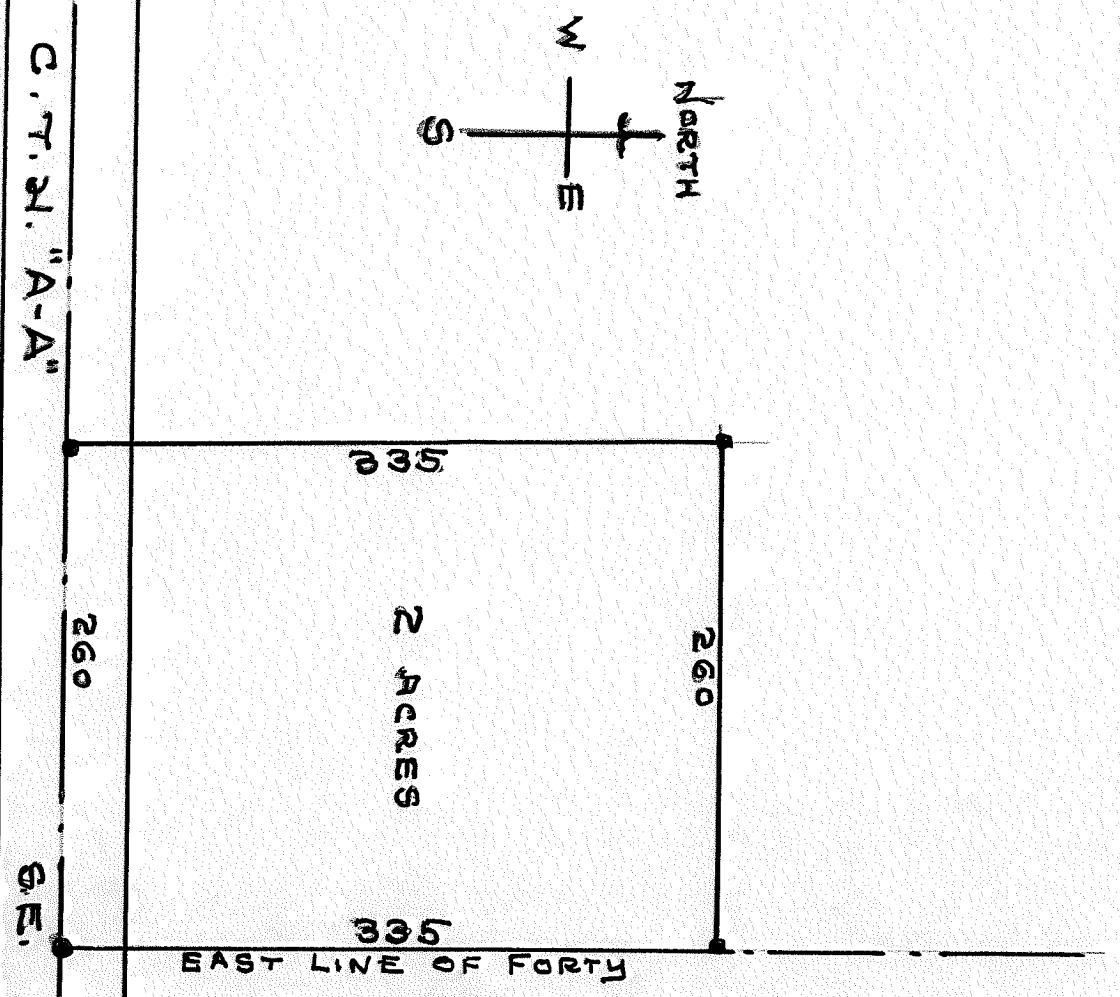


RECORD # 10813
 LANGLADE COUNTY SURVEYORS OFFICE
 DATE FILED: 7/19/11 BY: D. TLUSTY



Two acres in the south east corner of the S.W. 1/4 N.E. 1/4 section 5 T. 30 N. R. 12 E. described as:-Starting at the south east corner of said forty, thence west along the south line of said forty for 260 feet, thence north for 335 feet, thence east for 260 feet to the east line of said forty, thence south along said east line for 335 feet to place of beginning.