

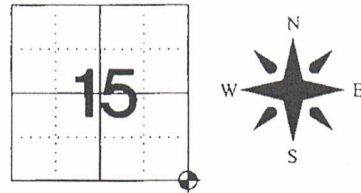
Document Number

209975

REGISTER'S OFFICE  
Forest County, Wis.  
Received for record this 17th day  
of September A.D., 2012 at  
9:00 o'clock A.M. and recorded  
in Vol. ~~1068~~ RESTORATION  
page ~~117~~  
*[Signature]*  
Register of Deeds

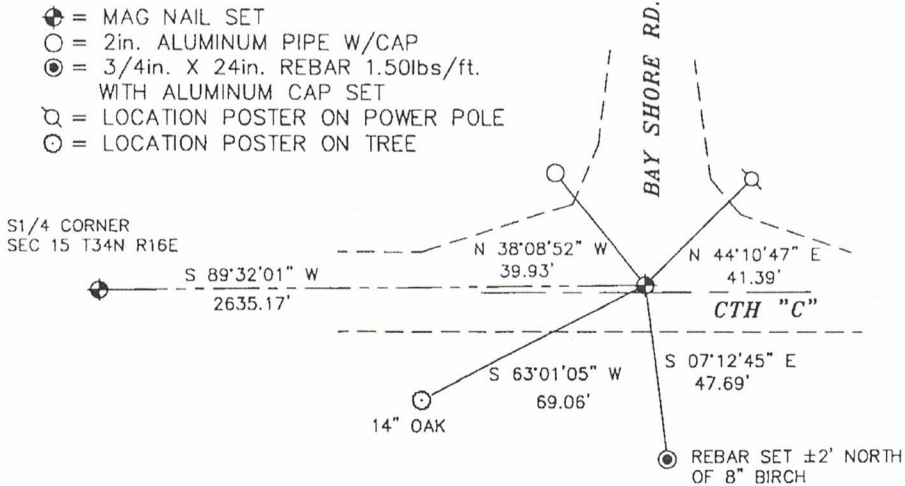
**U.S. PUBLIC LAND SURVEY MONUMENT RECORD**  
**FOREST COUNTY, WISCONSIN** N-17  
IN ACCORDANCE WITH WISCONSIN ADMINISTRATIVE CODE, CHAPTER A-E 7.08 (3) (A)-(I)

**LOCATION:** CHAPTER A-E 7.08 (3): (A)  
SECTION 15 TOWNSHIP 34 NORTH RANGE 16 EAST  
TYPE OF MONUMENT: MAG NAIL OVER 3/4in. REBAR  
WITH ALUMINUM CAP  
HORIZONTAL DATUM: NAD 83(2007) GRID  
FOREST COUNTY COORDINATES  
NORTHING: 516004.190  
EASTING: 947542.174



**RECOVERY PROCEDURES:** CHAPTER A-E 7.08 (3): (B), (F), (G), (H)  
20 NOV 1992: MONUMENT RECORD BY RLS 1558 (DOCUMENT #146850, VOL. 34-16 N-17) CALLS FOR A RAILROAD SPIKE AT CORNER  
7 JUNE 2012: FOUND CALLED FOR RAILROAD SPIKE UNDER FIRST LIFT OF BITUMINOUS AND RECORDED LOCATION PRIOR TO CTH "C" RESURFACE PROJECT  
30 JULY 2012: SET 3/4in. X 24in. REBAR 1.50lbs/ft. WITH ALUMINUM CAP IN ROAD BASE AND THEN SET A MAG NAIL IN BITUMINOUS OVER REBAR AFTER COMPLETION OF CTH "C" RESURFACE PROJECT

**PLAN VIEW:** CHAPTER A-E 7.08 (3): (C), (D), (E).



**SURVEYOR'S CERTIFICATE:** CHAPTER 7.08 (3): (I)  
THE UNDERSIGNED HEREBY CERTIFIES THAT THE U.S. PUBLIC LAND SURVEY MONUMENT RECORD IS CORRECT AND COMPLETE TO THE BEST OF MY KNOWLEDGE AND BELIEF.



*[Signature]*  
DARREN B. KRZANOWSKI  
WISCONSIN LAND SURVEYOR S-2663  
DATED THIS 2ND DAY OF AUGUST 2012

217