

216277

REGISTER'S OFFICE
Forest County, Wis.
Received for record this 2nd day
of February A.D., 2015 at
11:40 o'clock A.M. and recorded
in Vol. Corner Restoration
page R-1
Erika J. Eaton, Deputy
Register of Deeds

RS-7150-11 (9/1/00)

CERTIFIED LAND CORNER RESTORATION

State of Wisconsin }
County of Forest } ss.

I Randy R. Erickson, do hereby certify that on the 02 day of Oct, 19 2014 I found evidence of the South 1/4 corner of Section 8 Township 35 North Range 14 East, Fourth Principal Meridian, as described hereon; and that from this evidence I established a new monument and accessories as described hereon to perpetuate the original location of this corner:

Description of original monument and accessories and subsequent restorations:

1859 James McBride set a wood post and marked Bearing Trees:

Birch	16"	n 37° W	82 links
Sugar	12"	S 87° E	42 linka

Found no record of subsequent perpetuations

Description of corner evidence found:

No evidence of corner. determined corner to be lost. Restored by single proportionate measure between the Southeast and Southwest corners of Section 8,

Found dead maple with old blaze N 23° W 17.2 feet

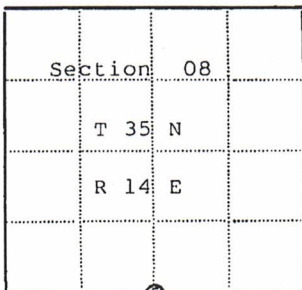
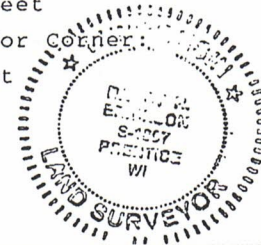
Description of monument and accessories I established to perpetuate the location of this corner:

Set a 2" x 32" aluminum pipe monument with a 3" aluminum cap stamped to identify the corner. Monument extends 6" above ground. Marked Bearing Trees:

Maple	13"	N 72° W	28.95 feet
Ash	4"	N 01° W	17.39 feet
Maple	14"	S 37° E	33.30 feet
Steel Sign post		South	0.6 feet

Established Wisconsin North Zone State Plane Coordinates for Corner:

N 132108.52 E 2284341.72 NAD 83 2011 U.S. Foot



● - Corner monument restored
□ -

Resident witnesses.....

Dated at Park Falls Wisconsin, this 07 day of January 19 2015

Signature *Randy R. Erickson* Title Prof. Land Surveyor
(County Surveyor, Registered Land Surveyor, or other duly authorized official)

Surveyors Registration No. 1897

Office of..... County of.....

I hereby certify that the within instrument was filed in this office for record on the..... day of..... 19....., and was filed in Book No..... Page No..... of County Records.

Signature..... Title.....

Township 35 North, Range 14 East, Section 8, Index No....., Page No.....