

224826

RL-7150-11 (9/1/66)

CERTIFIED LAND CORNER RESTORATION

State of Wisconsin }
County of Forest } ss.

I Randy R. Erickson, do hereby certify that on the 5th day of April, 2012 I found evidence of the North Quarter corner of Section 30 Township 36 North, Range 14 East, Fourth Principal Meridian, as described hereon; and that from this evidence I established a new monument and accessories as described hereon to perpetuate the original location of this corner:

Description of original monument and accessories and subsequent restorations:
1859 James McBride set a wood post and marked Bearing Trees:

Table with 4 columns: Tree type, Height, Bearing, Distance. Includes Spruce 6" N 48° E 34 links and Hemlock 12" S 21° W 17 links.

No record of subsequent perpetuations.

Description of corner evidence found:

Recovered a 4" x 40" iron pipe with a 3" x 3" squared post alongside. I believe this was set by Conner Lumber Co. many years ago. Accept pipe as best evidence of corner.

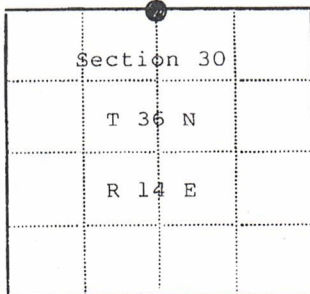
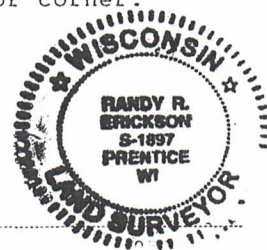
Description of monument and accessories I established to perpetuate the location of this corner:

Replace pipe with a 2 1/2" x 60" aluminum pipe monument with a cap stamped to identify the corner. Monument extends 12" above ground. Marked BTs:

Table with 4 columns: Tree type, Height, Bearing, Distance. Includes Tamarack 9" N 39° E 31.70 feet, Hemlock 12" S 84° W 65.42 feet, Red Maple 6" N 30° W 38.55 feet, Steel Sign Post West 0.5 feet.

Established Wisconsin North Zone State Plane Coordinates for corner:

N 152826.70 E 2278805.37 NAD 83 1991 U.S. Foot



Legend: Dot = Corner monument restored, Square =

Resident witnesses

Dated at Park Falls Wisconsin, this 12 day of Nov. 2014

Signature [Handwritten] Title P.-L.-S. (County Surveyor, Registered Land Surveyor, or other duly authorized official)

Surveyors Registration No. 1897

Office of REGISTER OF DEEDS County of FOREST

I hereby certify that the within instrument was filed in this office for record on the 12th day of MARCH 2014, and was filed in Book No. CONNER 2470 Page No. R-3 of County Records.

Signature [Handwritten] Title REGISTER OF DEEDS

Township 36 North, Range 14 East, Section 30, Index No. R-3, Page No.