

224827

K2-7150-11 (9/1/66)

CERTIFIED LAND CORNER RESTORATION

State of Wisconsin }
County of Forest } ss.

I Randy R. Erickson, do hereby certify that on the 5th day of April, 19 2012 I found evidence of the North Quarter corner of Section 32 Township 36 North, Range 14 East, Fourth Principal Meridian, as described hereon; and that from this evidence I established a new monument and accessories as described hereon to perpetuate the original location of this corner:

Description of original monument and accessories and subsequent restorations:

1859 James McBide set a wood psot and marked Bearing Trees:

Table with 4 columns: Tree type, Diameter, Bearing, Distance. Includes Tamarac 6" N 14° W 72 links and Spruce 6" S 26° E 13 lks.

No other records found of perpetuation.

Description of corner evidence found:

Determined corner to be lost and restored by propotionate measure between the NE corner of Section 32 and mathematical NW Corner of Section 32.

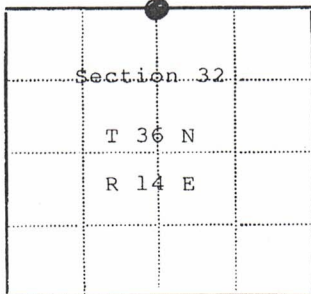
Description of monument and accessories I established to perpetuate the location of this corner:

Set a 2 1/2" x 60" aluminum drive monument with an aluminum cap stamped to identify the corner. Monument extends 1 foot above swamp. Marked BTs:

Table with 4 columns: Tree type, Diameter, Bearing, Distance. Includes Tamarac 10" N 60° E 5.82 feet, Tamarack 9" S 19° E 44.64 feet, Tamarack 10" S 25° W 31.78 feet, and Steel Sign Post North 0.60 feet.

Established Wisconsin North Zone State Plane Coordinates for this corner:

N 147630.42 E 2284031.46 Nad 83 1991 U.S. Foot



Legend: Black dot = Corner monument restored; White square =

Resident witnesses

Dated at Park Falls Wisconsin, this 10 day of Nov. 19 2014

Signature [Signature] Title P.L.S. (County Surveyor, Registered Land Surveyor, or other duly authorized official)

Surveyors Registration No. 1897

Office of REGISTER OF DEEDS County of FOREST

I hereby certify that the within instrument was filed in this office for record on the 12th day of MARCH 20 18, and was filed in Book No. CORNERS REST. Page No. V-7 of County Records.

Signature [Signature] Title REGISTER OF DEEDS

Township 36 N Range 14 East Section 32 Index No. V-7 Page No.