

224829

RS-7150-11 (9/1/66)

CERTIFIED LAND CORNER RESTORATION

State of Wisconsin }
County of Forest } ss.

I, Randy R. Erickson, do hereby certify that on the 20 day of March, 2012 I found evidence of the Northeast corner of Section 32 Township 36 North, Range 14 E, Fourth Principal Meridian, as described hereon; and that from this evidence I established a new monument and accessories as described hereon to perpetuate the original location of this corner:

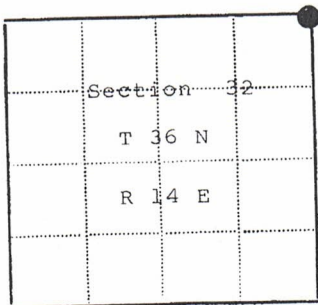
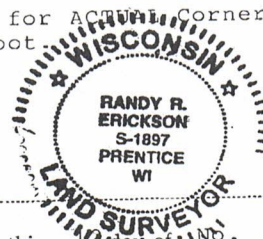
Description of original monument and accessories and subsequent restorations:
1859 James McBride set a wood post and marked Bearing Trees:
Hemlock 36" N 32° W 18 links
Hemlock 12" N 66° E 16 links
Hemlock 20" S 64° E 50 linka
Linden 11" S 10° W 23 links

1965 State Highway Commission of Wisconsin located and perpetuated corner: Set a wood hub 2" x 2" x 12" at corner. Set 2 concrete Witness "Corners". One Southwest 34.9 feet, the next Southwest on the same line 55.15 feet.

Description of corner evidence found:
Recovered 4" x 4" concrete monument 55.15 feet SW of corner with brass stamped WIT COR 55.15' 1965. Recovered 2 1/2 x 2 1/2" concrete monument Northeast of 4" sq. concrete with a square rod in center. This monument is damaged, but located 20.25 feet NE of other.

Description of monument and accessories I established to perpetuate the location of this corner:
Left 4" Sq. concrete in place as Witness Corner. Replaced damaged concrete with a 1 1/2" x 36" aluminum monument Stamped to identify it as a Reference monument 34.90 feet SW of Corner. Set a steel sign post south of Ref. mon. 1.0 feet. Marked Bearing Trees to Ref. mon.
Sugar 12" S 40° E 72.39 feet
Hemlock 16" S 15° W 71.98 feet

Set a steel sign post 0.70 feet S 16° W of 4 1/2" concrete.
Established Wisconsin North Zone State Plane Coordinates for ACTUAL Corner.
N 147655.79 E 2286750.95 NAD 83, 1991 U.S. Foot.



Corner monument restored
-

Resident witnesses...
Dated at Park Falls Wisconsin, this 20 day of March 19 2014

Signature [Signature] Title PROB. L.S.
(County Surveyor, Registered Land Surveyor, or other duly authorized official)

Surveyors Registration No. 1897

Office of REGISTER OF DEEDS County of FOREST

I hereby certify that the within instrument was filed in this office for record on the 20th day of MARCH 20 18, and was filed in Book No. CORNER REST. Page No. V-9 of County Records.

Signature [Signature] Title REGISTER OF DEEDS

Township 36 N, Range 14 E, Section 32, Index No. V-9, Page No.