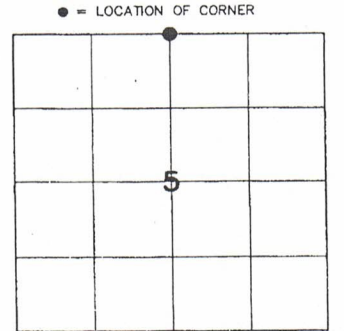


225147

# U.S. PUBLIC LAND SURVEY MONUMENT RECORD

HISTORY OF ORIGINAL CORNER ESTABLISHMENT AND SUBSEQUENT RESTORATION AND DESCRIPTION OF ANY RECORD, MONUMENT OCCUPATIONAL, TESTIMONIAL OR OTHER EVIDENCE CONSIDERED:

THE ORIGINAL CORNER WAS SET BY ALFRED MILLARD IN 1857 WITH THE ORIGINAL BEARING TREES OF:  
HEMLOCK 12" N6°W 4 LINKS  
HEMLOCK 10" S45°E 42 LINKS  
1990- KELLY FOUND A RE-BAR SET BY ISON SUBDIVISION AND SET A 1" IRON PIPE OVER IT. HIS ADDITIONAL TIES WERE N90°E 33.00', S71°E 33.85', S40°W 48.41', S67°W 50.06'  
2016-I FOUND THE 1" PIPE AND SET TIES AS SHOWN

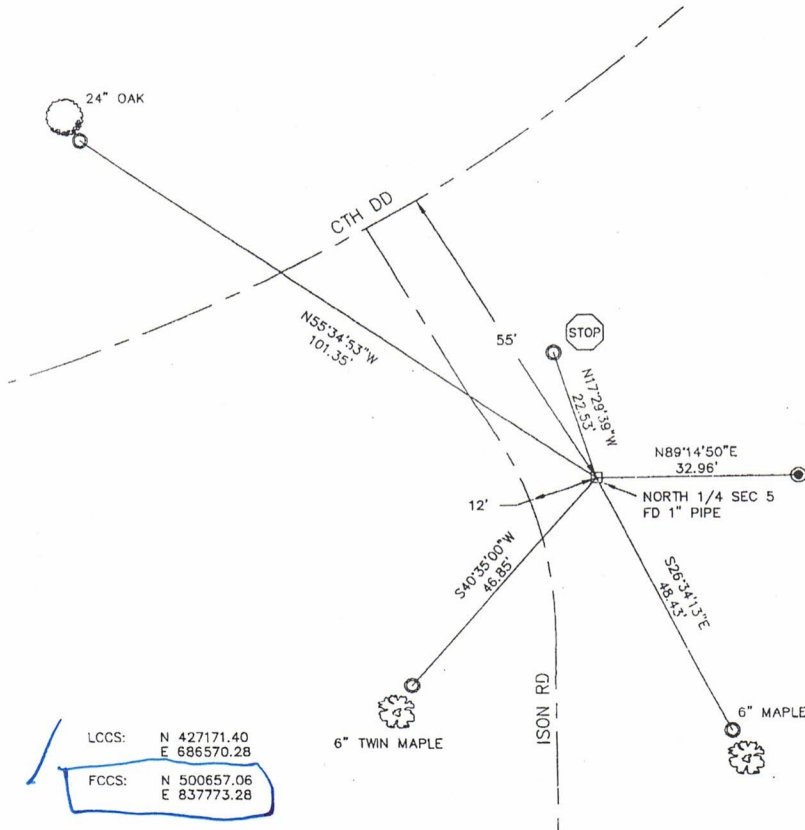


SECTION 5  
TOWNSHIP 33 NORTH, RANGE 13 EAST  
TOWN OF LANGLADE  
LANGLADE COUNTY, WISCONSIN

CORNER WAS: (CHECK ALL THAT APPLY)

- RESTORED THROUGH ACCEPTANCE OF AN OBLITERATED EVIDENCE LOCATION
- RESTORED THROUGH ACCEPTANCE OF A FOUND PERPETUATED LOCATION
- CONSIDERED A LOST CORNER AND REESTABLISHED THROUGH LOST CORNER PROPORTIONATE METHODS (INCLUDE A PLAN VIEW DRAWING SHOWING DISTANCES AND DIRECTIONS TO OTHER PUBLIC LAND SURVEY CORNERS USED FOR PROPORTIONING AND DETERMINING THE CORNER LOCATION)
- RESTORED OR REESTABLISHED IN A LOCATION THAT DIFFERS FROM A PREVIOUS RESTORATION OR RE-ESTABLISHMENT (INCLUDE A PLAN VIEW DRAWING AND INDICATE WHAT WAS SET AND/OR FOUND)
- CHECK IF THERE IS ADDITIONAL INFORMATION ON BACK

DESCRIBE THE MONUMENT AND ACCESSORIES USED TO PERPETUATE THE LOCATION OF THE CORNER. (INCLUDE A PLAN VIEW DRAWING AND INDICATE WHAT WAS SET AND/OR FOUND) ALSO INCLUDE FOUR TIES TO THE SECTION CORNER AND DESCRIPTION OF THE TIES.



○ SET 3/4" X 30" IRON REBAR AT ALL TIE LOCATIONS

BEARINGS REFERENCED THE LANGLADE COUNTY COORDINATE SYSTEM

T - WHITE VINYL POST SET

TREES SHOWN HAVE BEARING TREE SIGNS NAILED TO FACE

FOREST COUNTY, WI  
CORTNEY BRITTEN CLEEREMAN  
REGISTER OF DEEDS  
RECEIVED FOR RECORD

APR 27 2018

Time: 10:00 A. M.  
Vol.: Corner Restoration  
Page Number: 2-7

LCCS: N 427171.40  
E 686570.28

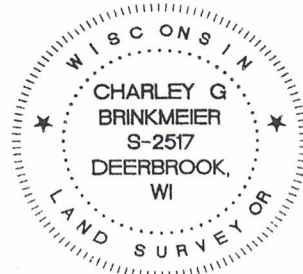
FCCS: N 500657.06  
E 837773.28

CHARLEY G. BRINKMEIER

(Type or print name) CERTIFY THAT THE CORNER LOCATION SHOWN ON THIS RECORD WAS DETERMINED BY ME OR UNDER MY DIRECTION AND CONTROL AND THAT THIS U.S. PUBLIC LAND SURVEY MONUMENT RECORD IS CORRECT AND COMPLETE TO THE BEST OF MY KNOWLEDGE AND BELIEF.

SIGNATURE Charley G. Brinkmeier

DATE 1-17-17



INDEX NO.