

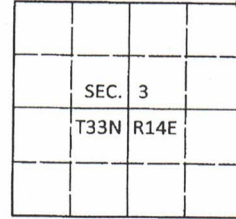
225168

U.S. PUBLIC LAND SURVEY MONUMENT RECORD

Note: This form is intended and designed to fulfill all requirements of Wisconsin Administrative Code, Chapter A-E 7.08 U.S. Public Land Survey Monument Record (3)(a-4).

(a) CORNER LOCATION
Cor. of Secs. 2, 3, 34 & 35
Township 33 & 34 North
Range 14 East of the 4th P.M.
Town of Wolf River/Freedom
County of Langlade/Forest

WISCORS - Langlade County
N: 427,373.55 USft
E: 731,729.97 USft
WISCORS - Forest County
N: 500,635.31 USft
E: 882,933.38 USft
Datum: NAD 83(2011)
GNSS Method: WISCORS STATIC



(b) HISTORY OF ORIGINAL CORNER ESTABLISHMENT

Original Surveyor: Alfred Millard

Original Accessories:

Date of Survey Commenced: August, 1857
Completed: August, 1857

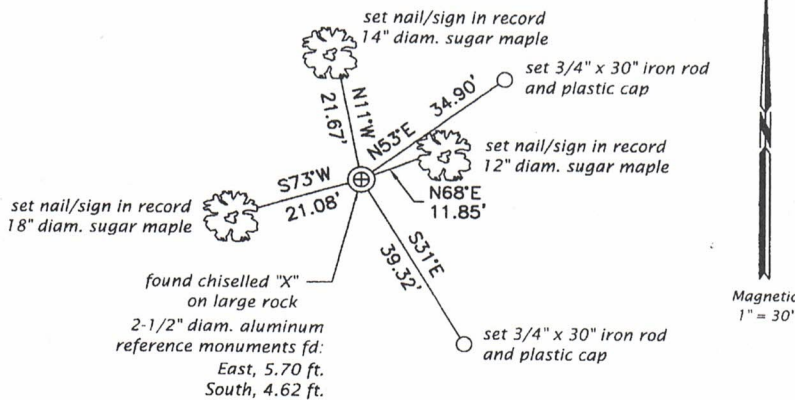
Lynn 30" N65°W, 22 lks.
Sugar 14" S44°W, 31 lks.
Lynn 28" N30°E, 3 lks.
Ironwood 10" S52°E, 15 lks.

(b)(f)(g)(h) Description of monument found at this corner and if it was accepted, state all evidence (material, testimonial, occupational, plats, records, other monuments) used as a basis for accepting. If not accepted or if nothing was found, state evidence used as basis for establishing location. If re-established through lost corner proportionate methods, indicate all monuments, distances and directions used to establish. Indicate type of monument and sign post found or set.

This is a perpetuation of a previous USPLS Monument Record by Milo E. Stefan, RLS dated January 23, 1984 and filed in the office of the Langlade County Surveyor. A complete history of the corner can be found on the previous monument record. I accept the previous location as a true and faithful perpetuation or reestablishment of the original corner location and further perpetuate it as follows.

November 4, 2016: I found and accepted the record monument, a chiselled "X" on a large rock. I found reference monuments as described by Stefan: a 2-1/2" diam. aluminum pipe with a 3-1/4" diam. aluminum cap bearing East, 5.70' and South, 4.62'. I found or established accessories as shown below. USFS steel sign posts are adjacent to each reference monument. I set a white vinyl sign post bearing Northeast, 1.5 ft. from the corner point.

(c)(d)(e) Plan view of corner with ties to at least 4 witness monuments. If in disagreement with previously established corner, show the distances between the two corners and also indicate the ties to the disputed.



FOREST COUNTY, WI
CORTNEY BRITTEN CLEEREMAN
REGISTER OF DEEDS
RECEIVED FOR RECORD

APR 27 2018

Time: 10:00-A.M.
Vol.: Corner Restoration
Page Number: Z-17

(i) I, Jeffrey W. Austin, Professional Land Surveyor No. S-1885, hereby certify that the corner location on this record was determined by me or under my direction and control and that this U.S. Public Land Survey Monument Record is correct and complete to the best of my knowledge and belief.

Handwritten signature of Jeffrey W. Austin.

MAY 4, 2017
Date

