

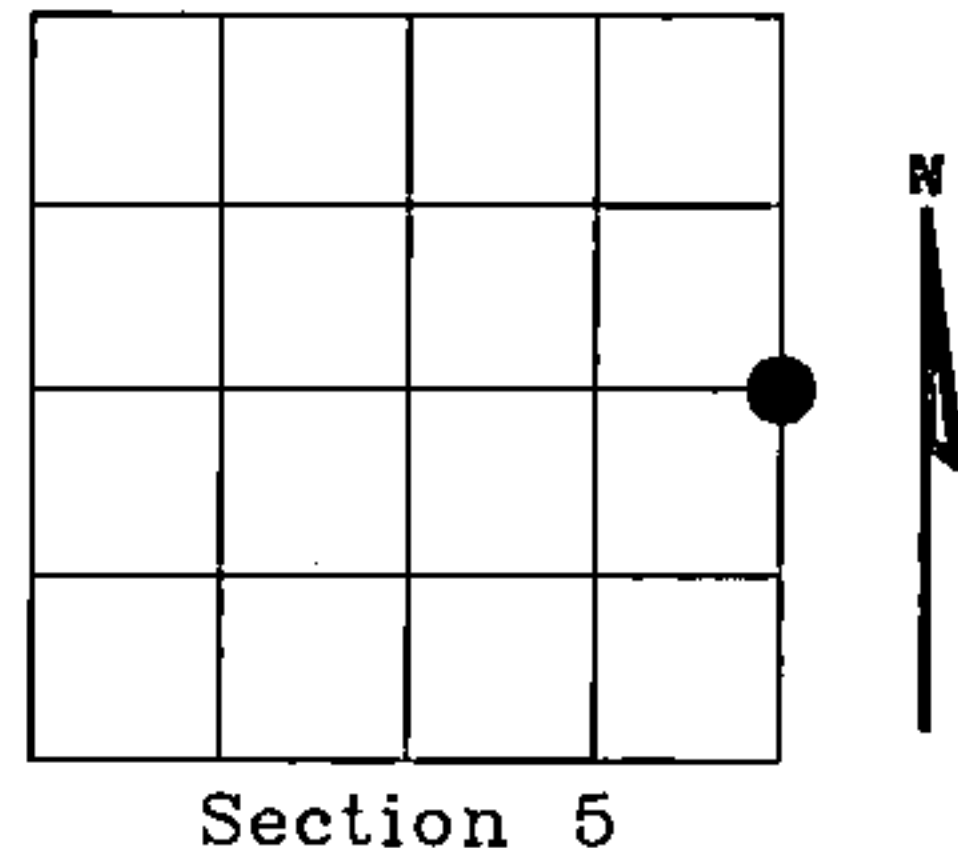
Document Number
177115

REGISTER'S OFFICE
Forest County, Wis.
Received for record this 23rd day
of October A.D., 2002 at
9:00 o'clock A.M. and recorded
in Vol. Corner Restoration
page C-9
Kay Swanson, Deputy
Register of Deeds

U.S. PUBLIC LAND SURVEY MONUMENT RECORD

NOTE: This form is intended and designed to fulfill all requirements of Wisconsin Administrative Code, Chapter A-E 7.08 U.S. Public Land Survey Monument Record (3)(a)(b)(c)(d)(e)(f)(g)(h)(i). An additional sheet may be added if necessary to conform with said requirements.

(a) Corner location: Township 34 North
Range 13 West
Town of NASHVILLE
FOREST County, Wisconsin

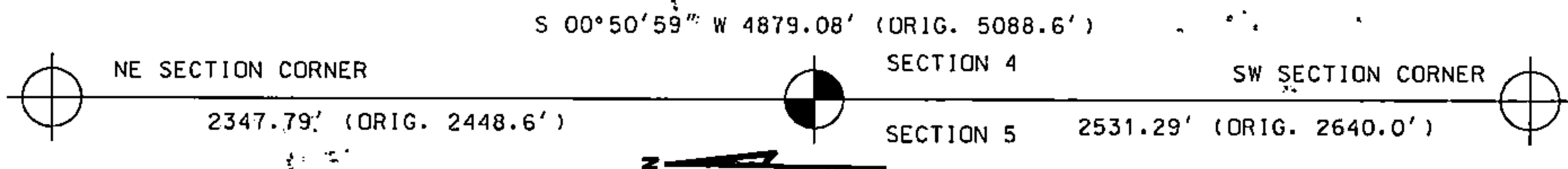


Section 5

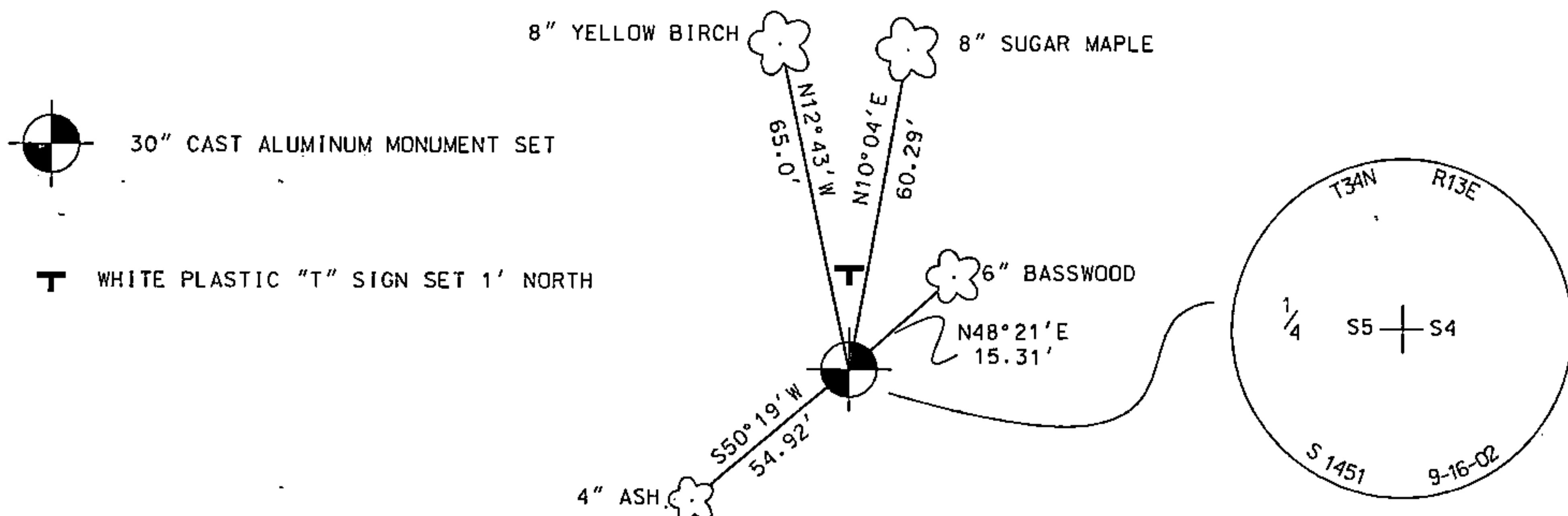
(b)(f)(g)(h) Description of monument found at this corner and if it was accepted, state all evidence (material, testimonial, occupational, plats, records, other monuments) used as a basis for accepting. If not accepted or if nothing was found, state evidence used as basis for establishing location. If reestablished through lost corner proportionate methods, indicate all monuments, distances and directions used to establish. Indicate type of monument found or set and sign post.

1865 - James L. Nowlin, set on quarter section post.
BTs Sugar 12" N49E 5 links.
Birch 10" S25W 30 links

2002 - I found no evidence of corner. Established one quarter corner by proportional measurement.

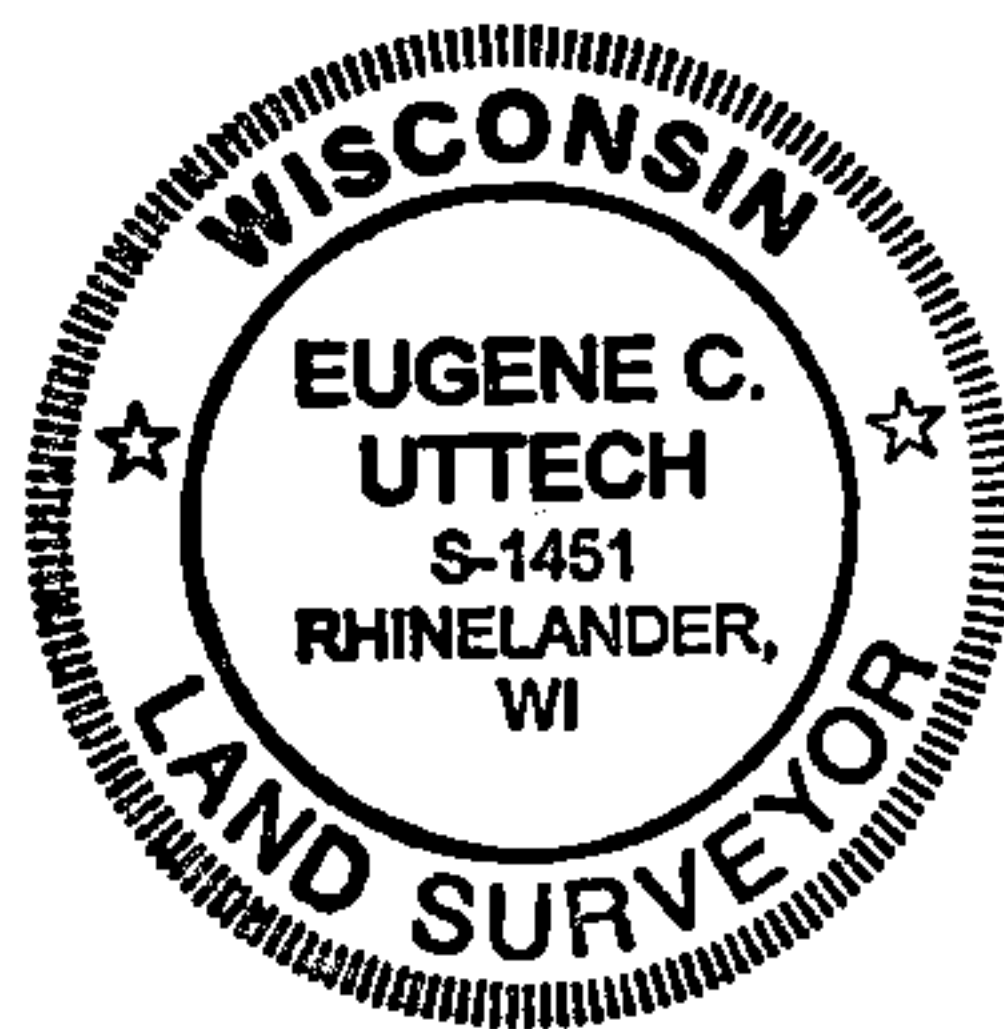


(c)(d)(e) Plan view of corner with ties to at least 4 witness monuments. If in disagreement with previously established corner, show the distances between the two corners and also indicate the ties to the



(i) I, EUGENE C. UTTECH, Registered Land Surveyor *S-1451, hereby certify that the corner location on this record was determined by me or under my direction and control and that this U.S. Public Land Survey Monument Record is correct and complete to the best of my knowledge and belief.

Eugene C. Uttech 9.26.02
Signature Date



Index No. C-9

43413052000