

241602

NOV 08 2023

CORTNEY BRITTEN CLEEREMAN
REGISTER OF DEEDS

U S PUBLIC LAND SURVEY MONUMENT RECORD - ADDENDUM

NOTE: This form is intended and designed to fulfill all requirements of Wisconsin Administrative Code, Chapter A-E 7.08 U.S. Public Land Survey Monument Record (3) (a-i)

A-E 7.08(3)(a) Identity of corner:
SOUTHEAST CORNER SECTION 17,
TOWNSHIP 34 NORTH,
RANGE 13 EAST OF THE 4TH PM,
TOWN OF NASHVILLE,
COUNTY OF FOREST

WISCORS - FOREST COUNTY
N: 516,794.617 USft (XXX,XXX.XXX)
E: 840,761.448 USft (XXX,XXX.XXX)
Datum: NAD83 (2011)
GNSS Method RTK
GNSS Control WISCORS VRS



The coordinate value shown has been verified by the average of two or more GPS observations at a markedly different time. Coordinates shown in parenthesis are previously published values.

A-E 7.08(3)(b)

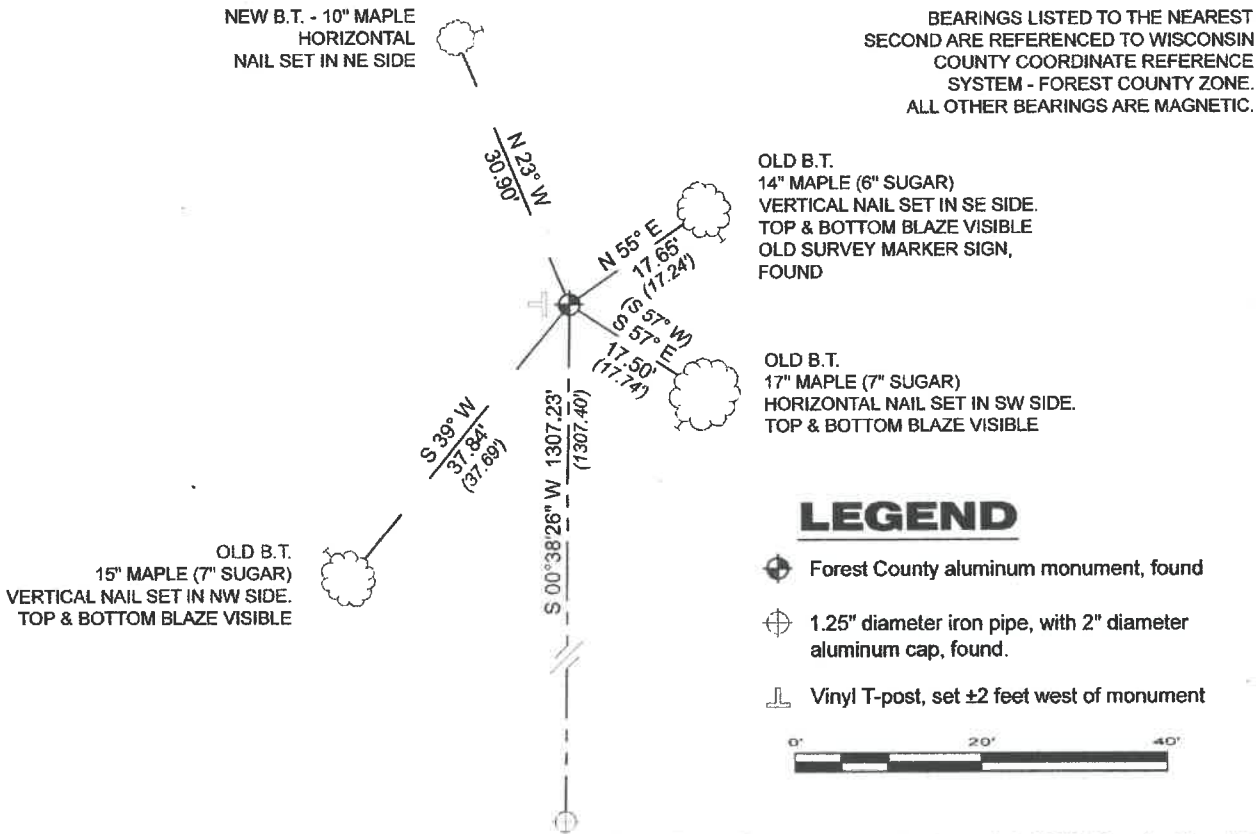
Original Surveyor: James L. Nowlin

Date of Original Survey	Commenced:	October 3, 1865	Original Accessories:	
	Completed:	October 18, 1865	Hemlock 12 N 73° W	15 Links
			Hemlock 20 N 66° E	45 Links

See Certified Land Corner Restoration - N-9 - June 9, 1983 - Surveyor 1682 - Glen Barker THENCE:

February 15, 2023 - I found a 2.5" diameter aluminum pipe, with a 3.2" diameter aluminum cap stamped to identify corner. I also found 3 of Barkers bearing trees alive and intact. The monument is flush with the ground and near the west edge of a woods road. I reestablished the 3 existing bearing trees, and established 1 new reference monuments as shown below.

A-E 7.08(3)(c)(d) Plan view of corner with references to at least 4 witness monuments.



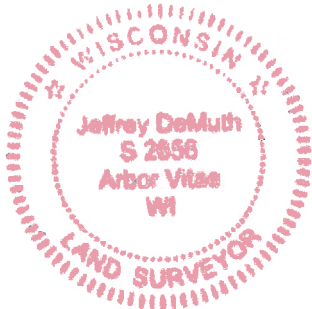
A-E 7.08(3)(e) 1865 Surveyor set a post, 1983 Surveyor set a 2 1/2" A-1 Forest County monument, stamped. In 2023, I found a Forest County aluminum monument stamped to identify the corner.

A-E 7.08(3)(f) I accept this monument as a FOUND PERPETUATED LOCATION of the corner.
A-E 7.08(3)(g)(h) This corner was not determined through lost-corner-proportionate methods.

A-E 7.08(3)(i) I, Jeffrey L. DeMuth, Professional Land Surveyor No. S-2656, hereby certify that the corner location on this record was determined by me or under my direction and control, and that this U.S. Public Land Survey Monument Record is correct and complete to the best of my knowledge, and belief.

SIGNATURE

February 16, 2023
DATE



43413170000

N9

CERTIFIED LAND CORNER RESTORATION

Index No. **N-99**

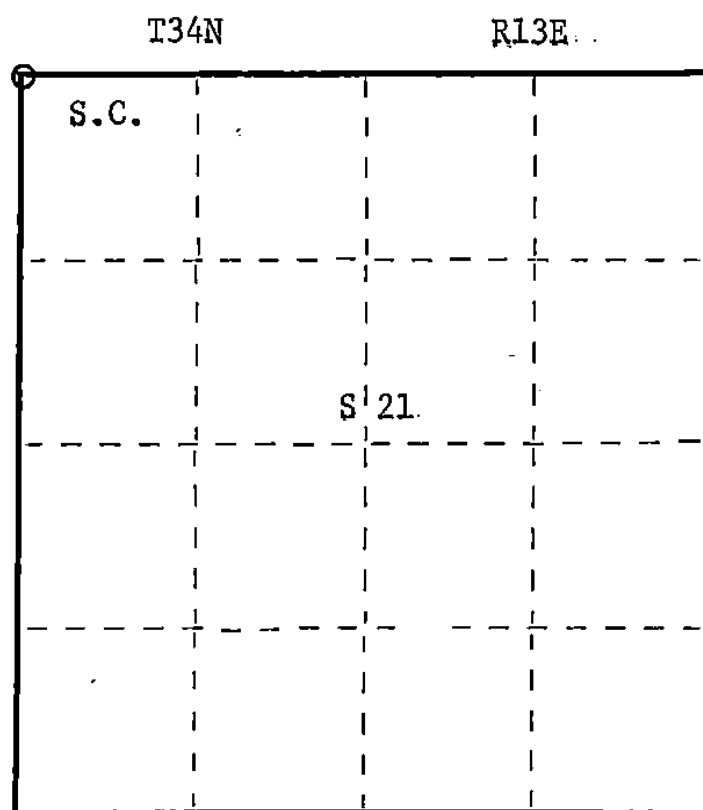
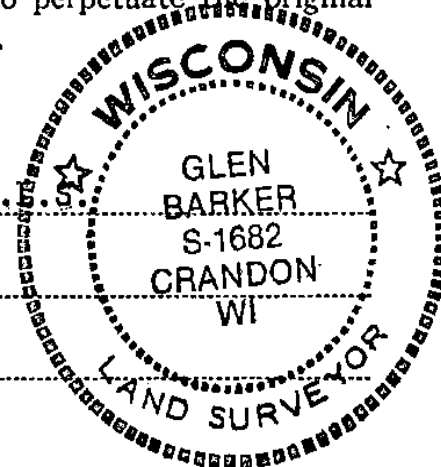
State of Wisconsin }
County of Forest } ss.

I Glen Barker, do hereby
certify that on the 17th day
of May, 19 83, I found
evidence of the Section
corner of Sections 16-17-20-21
Township 34, North, Range
13 East, Fourth Principal Meridian,
as described hereon; and that from this evidence
I established a new monument and accessories
as described hereon to perpetuate the original
location of this corner.

Resident witnesses:

J. Claflin - R.

H. Wagoner



○ = Corner monument restored.

History of original corner establishment:

Original corner established in 1865 by James L. Nowlin, Gov. Deputy Surveyor from which
hemlock 12" bears N73W 15 lks and hemlock 20" N66E 45 lks.

Description of corner evidence found:

Recovered a 1½" axle shaft 3' long, also two old cedar stakes lying beside shaft, one
badly decayed.

Description of monument and accessories I established to perpetuate the original location of this corner.

Removed shaft and replaced with a 2½" A-1 Forest County monument cap, stamped:

Monument projects 6" above ground.

Marked NBTs:

Sugar 6"	N55E	17.24 ft.
Sugar 7"	S39W	37.69 ft.
Sugar 7"	S57W	17.74 ft.
Sugar 5"	N42W	25.27 ft.

Scribed S.C. - B.T.

T34N R13E

Sec. Cor. 17 16
20 21

1682 - 1983

Dated at Rhinelander, Wis., this 9th day of June, 19 83.

Signature Glen Barker Title Registered Land Surveyor Registration No. S1682
(County Surveyor, Registered Land Surveyor, or other duly authorized official)

Office of Register of Deeds, County of Forest, I hereby certify that the within
instrument was filed in this office for record on the 26th day of July, 19 83
at 11:55 o'clock A. M.

Eugene Stutzman
(Register of Deeds)

By _____ Deputy

DOCUMENT NO. **123855**

Stock No. 26272

McMillan Company

FORM 985

43413170000