

241603

NOV 08 2023

CORTNEY BRITTEN CLEEREMAN
REGISTER OF DEEDS

U S PUBLIC LAND SURVEY MONUMENT RECORD

NOTE: This form is intended and designed to fulfill all requirements of Wisconsin Administrative Code, Chapter A-E 7.08 U.S. Public Land Survey Monument Record (3) (a-i)

A-E 7.08(3)(a) Identity of corner:
EAST 1/4 CORNER SECTION 20,
TOWNSHIP 34 NORTH,
RANGE 13 EAST OF THE 4TH PM,
TOWN OF NASHVILLE,
COUNTY OF FOREST

WISCORS - FOREST COUNTY
N: 514,180.512 USft (XXX,XXX.XXX)
E: 840,731.946 USft (XXX,XXX.XXX)
Datum: NAD83 (2011)
GNSS Method RTK
GNSS Control WISCORS VRS



The coordinate value shown has been verified by the average of two or more GPS observations at a markedly different time. Coordinates shown in parenthesis are previously published values.

A-E 7.08(3)(b)

Original Surveyor: James L. Nowlin

Date of Original Survey Commenced: October 3, 1865
 Completed: October 18, 1865

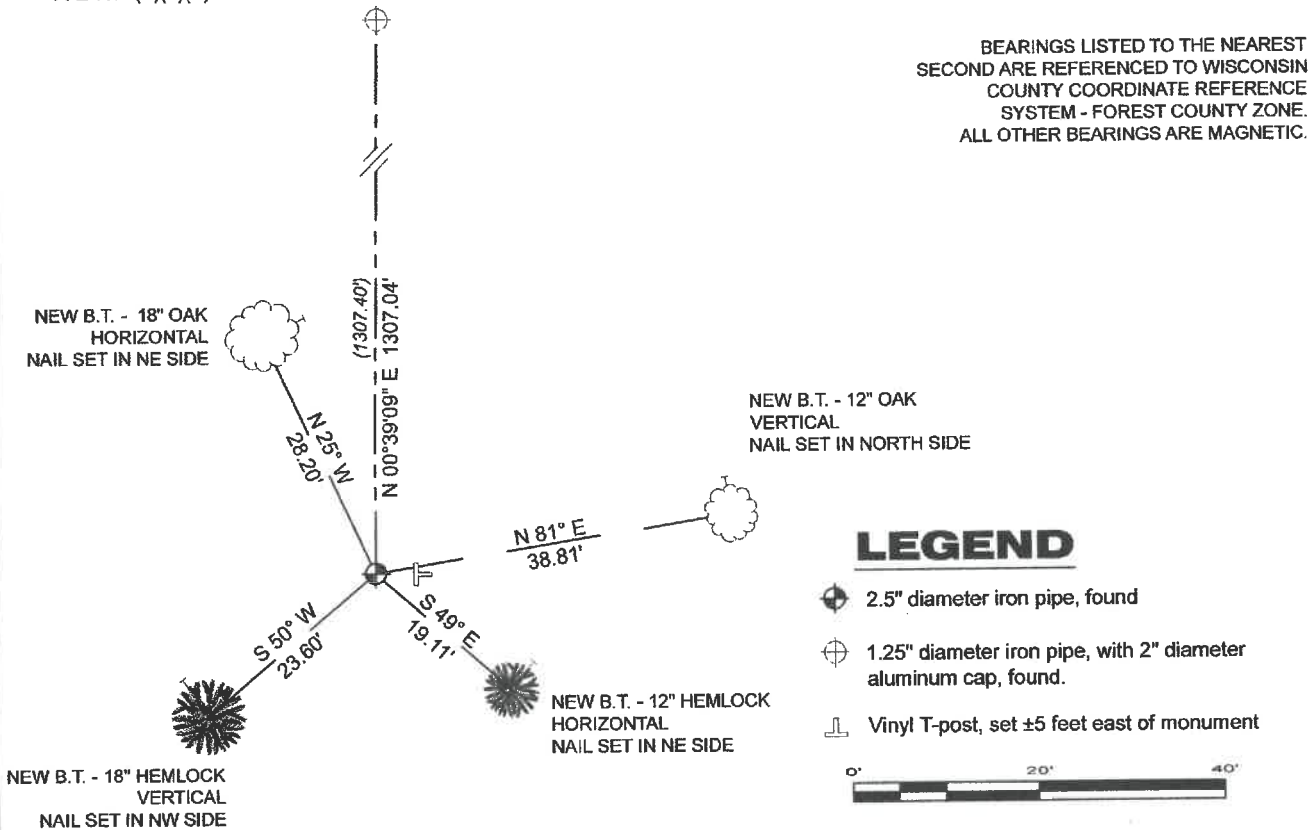
Original Accessories:
Birch 12 N 59° E 20 Links
Birch 16 S 25° W 25 Links

THENCE:

May 9, 1983 - Surveyor 1682 - Glen Barker - mentions this corner on Certified Land Corner Restoration - O-9.

February 15, 2023 - I found a 2.5" diameter iron pipe near the location mentioned by Barker on Certified Land Corner Restoration - O-9.
The monument is flush with the ground and ±2 feet east of a woods road centerline.
I established 4 new reference monuments as shown below.

A-E 7.08(3)(c)(d) Plan view of corner with references to at least 4 witness monuments.



A-E 7.08(3)(e) 1865 Surveyor set a post. In 2023, I found a 2.5" diameter iron pipe.

A-E 7.08(3)(f) I accept this monument as a FOUND PERPETUATED LOCATION of the corner.

A-E 7.08(3)(g)(h) This corner was not determined through lost-corner-proportionate methods.

A-E 7.08(3)(i) I, Jeffrey L. DeMuth, Professional Land Surveyor No. S-2656, hereby certify that the corner location on this record was determined by me or under my direction and control, and that this U.S. Public Land Survey Monument Record is correct and complete to the best of my knowledge, and belief.

SIGNATURE

February 16, 2023
DATE



43413202000

79