

NOV 08 2023

CORTNEY BRITTEN CLEEREMAN  
REGISTER OF DEEDS

241583

**U S PUBLIC LAND SURVEY MONUMENT RECORD - ADDENDUM**

NOTE: This form is intended and designed to fulfill all requirements of Wisconsin Administrative Code, Chapter A-E 7.08 U.S. Public Land Survey Monument Record (3) (a-i)

A-E 7.08(3)(a) Identity of corner:  
EAST 1/4 CORNER SECTION 31,  
TOWNSHIP 34 NORTH,  
RANGE 13 EAST OF THE 4TH PM,  
TOWN OF NASHVILLE,  
COUNTY OF FOREST

WISCORS - FOREST COUNTY  
N: 503,336.385  
E: 835,092.216  
Datum: NAD83 (2011)  
GNSS Method RTN - Direct  
GNSS Control WISCORS VRS



The coordinate value shown has been verified by the average of two or more GPS observations at a markedly different time.

A-E 7.08(3)(b)

Original Surveyor: James L. Nowlin

Date of Original Survey    Commenced:    October 3, 1865  
Completed:    October 18, 1865

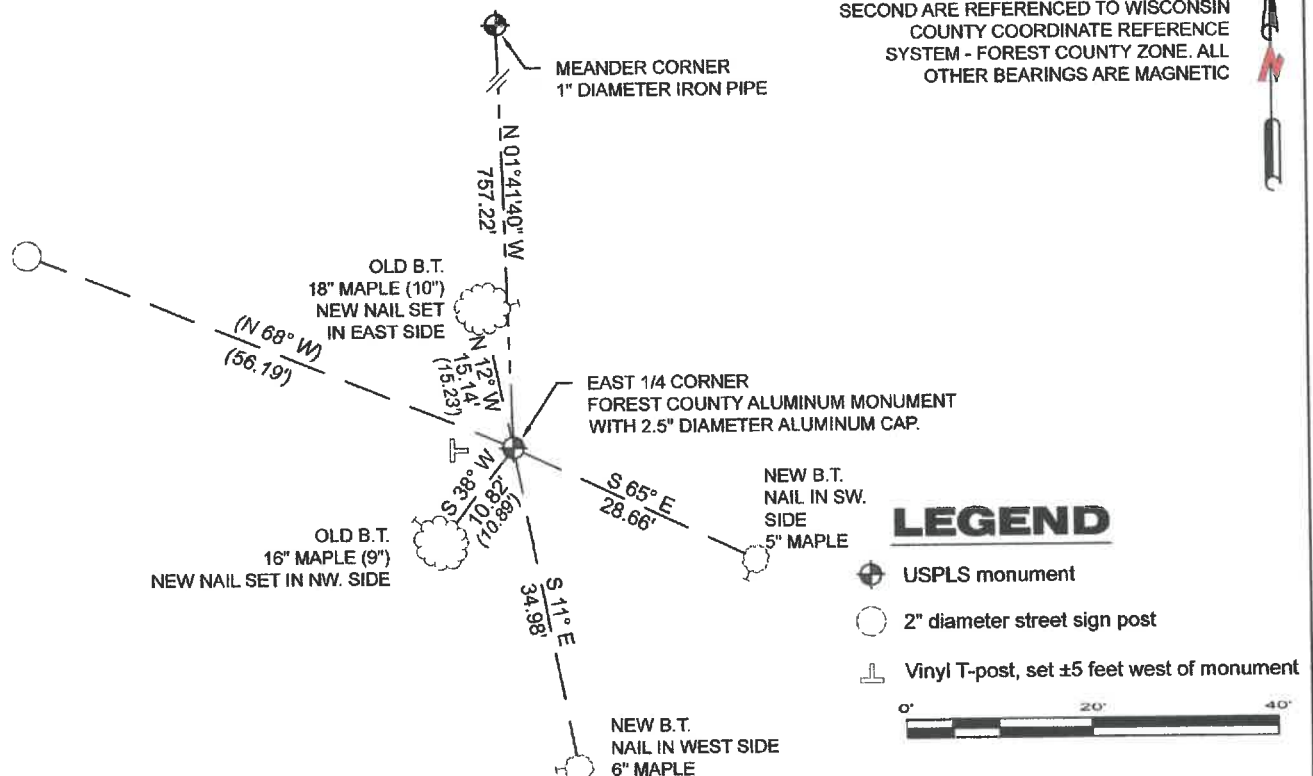
Original Accessories:  
Hemlock    9    S 48° E    3 links  
Sugar    20    S 63° W    24 links

May 26, 1995 - Surveyor 00973 - Wayne G. Dobbratz - U.S. Public Land Survey Monument Record X-5. Thence:  
December 30, 2002 - Plover River Lane Co. - indicates this position as "found 1" pipe" on Forest County Surveyor File #341332-20021230.  
November 10, 2006 - Surveyor 1910 - Matthew E. Hoglund - indicates this position as "2" Forest County aluminum monument found" on Forest County Surveyor File #341332-20061110.  
March 2, 2013 - Surveyor 1234 - James D. Rein - indicates this position as "2.5" dia. capped aluminum monument found" on Forest County Surveyor File #341332-20130302.  
October 9, 2014 - Surveyor 1234 - James D. Rein - indicates this position as "2.5" dia. capped aluminum monument found" on Forest County Surveyor File #341332-20141009.  
May 29, 2017 - Surveyor 2671 - Timothy J. Rusch - indicates this position as "found aluminum capped monument" on Forest County Surveyor File #341331-20170529.

February 8, 2023 - I found a Forest County aluminum monument with a 2.5" diameter cap stamped to identify corner. I also found 2 of Dobbratz B.T.'s and his street sign post witness.

I established 2 new bearing trees, as shown below.

A-E 7.08(3)(c)(d) Plan view of corner with references to at least 4 witness monuments.



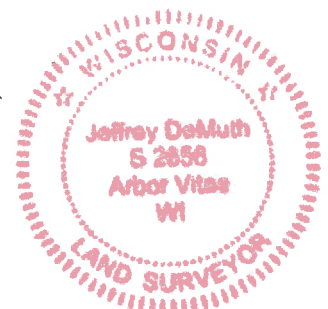
A-E 7.08(3)(e) 1865 Surveyor set a post, 1995 Surveyor found a 1" diameter iron pipe and replaced it with a "standard Forest County aluminum monument, subsequent surveyors found aluminum monuments of varying sizes. I found a Forest County aluminum monument with a 2.5" diameter cap stamped to identify corner.

A-E 7.08(3)(f) I accept this monument as a FOUND PERPETUATED LOCATION of the corner.

A-E 7.08(3)(g)(h) This corner was not determined through lost-corner-proportionate methods.

A-E 7.08(3)(i) I, Jeffrey L. DeMuth, Professional Land Surveyor No. S-2656, hereby certify that the corner location on this record was determined by me or under my direction and control, and that this U.S. Public Land Survey Monument Record is correct and complete to the best of my knowledge, and belief.

SIGNATURE

February 9, 2023  
DATE

434133/2000

X 5

U.S. PUBLIC LAND SURVEY MONUMENT RECORD

(As Required By s. A-E 5.02, WI Adm. Code)

History of original corner establishment and subsequent restorations and description of any record, monument, occupational, testimonial or other evidence considered:

ORIGINAL SURVEY BY NOWLIN IN 1864, N. BETWEEN SEC'S. 31 & 32, 40.0 CHS. SET  $\frac{1}{4}$  POST, B.T. BIR. 15" N. 87° W. 11 LKS., B.T. BIR. 10" N. 65° E. 32 LKS. FOUND 1" DIA. IRON PIPE NEAR FENCE COR. SAID PIPE USED AS  $\frac{1}{4}$  COR. IN ADJACENT SURVEYS BY ARNOTT R.L.S. NO. S-887.

REGISTER'S OFFICE  
Forest County, Wis.  
Received for record this 2nd day  
of October A.D., 1998 at  
9:30 o'clock A.M. and recorded  
in Vol. CORNER RESTORATION  
page X-5 32-34-13  
Christie Edlinger  
Deputy Register of Deeds

Corner was: (Check All That Apply)

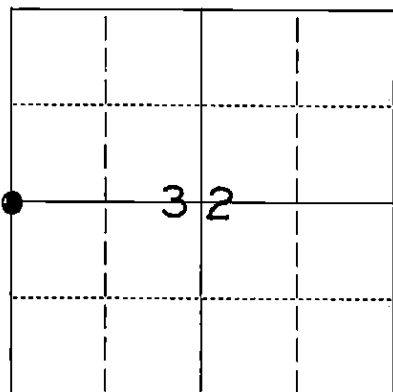
- ☐ Restored through acceptance of an obliterated evidence location  
☒ Restored through acceptance of a found perpetuated location  
☐ Considered a lost corner and reestablished through lost corner proportionate methods (include a plan view drawing showing distances and directions to other Public Land Survey Corners used for proportioning and determining the corner location)  
☐ Restored or reestablished in a location that differs from a previous restoration or reestablishment (include a plan view drawing and indicate what was set and/or found)

Describe the monument and accessories used to perpetuate the location of this corner. (include a plan view drawing and indicate what was set and/or found)

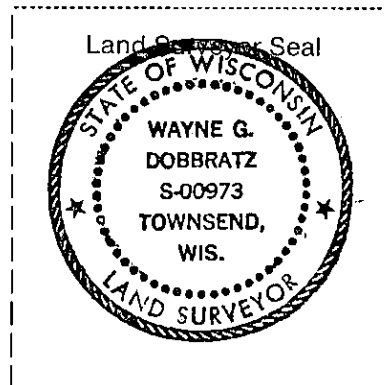
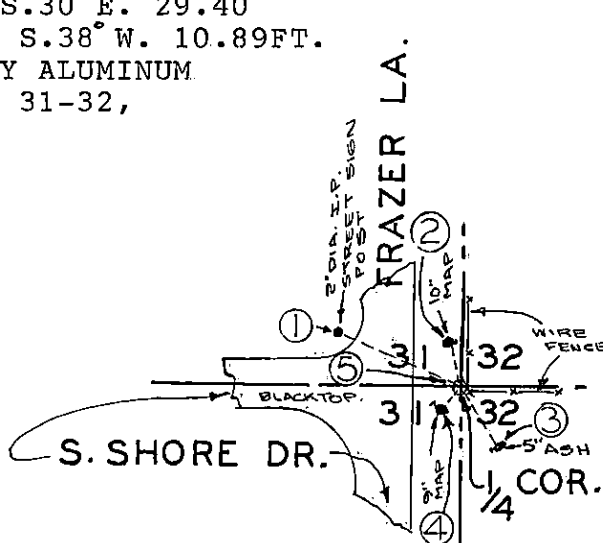
$\frac{1}{4}$  SECTION COR. AND WITNESS MONUMENTS

- ① — CENTER OF 2" DIA. STREET SIGN POST N. 68° W. 56.19 FT.  
② — B.T. 10" MAP. 60d SPIKE IN E. FACE, N. 12° W. 15.23 FT.  
③ — B.T. 5" ASH 60d SPIKE IN W. FACE S. 30° E. 29.40  
④ — B.T. 9" MAP. 60d SPIKE IN W. FACE S. 38° W. 10.89 FT.  
⑤ —  $\frac{1}{4}$  SEC. COR. STANDARD FOREST COUNTY ALUMINUM  
MONUMENT STAMPED  $\frac{1}{4}$  SEC. COR., SEC. 31-32,  
S-973.

The W.  $\frac{1}{4}$   
corner of Section 32  
T. 34 N., R. 13 E.,  
Fourth Principal Meridian,  
Marinette County, Wisconsin



● = Location of Corner



I, WAYNE G. DOBBRATZ  
(type or print name) certify that the corner location shown on this record was determined by  
me or under my direction and control and that this U.S. Public Land Survey Monument Record  
is correct and complete to the best of my knowledge and belief.

Signature

Date

5/26/95

Index No. X-5

43413 312000