

225146

# U.S. PUBLIC LAND SURVEY MONUMENT RECORD

HISTORY OF ORIGINAL CORNER ESTABLISHMENT AND SUBSEQUENT RESTORATION AND DESCRIPTION OF ANY RECORD, MONUMENT OCCUPATIONAL, TESTIMONIAL OR OTHER EVIDENCE CONSIDERED:

THE ORIGINAL CORNER WAS SET BY ALFRED MILLARD IN 1857 WITH THE ORIGINAL BEARING TREES OF:

HEMLOCK 18" N15°W 62 LINKS

HEMLOCK 24" S54°W 25 LINKS

HEMLOCK 18 N68°E 28 LINKS

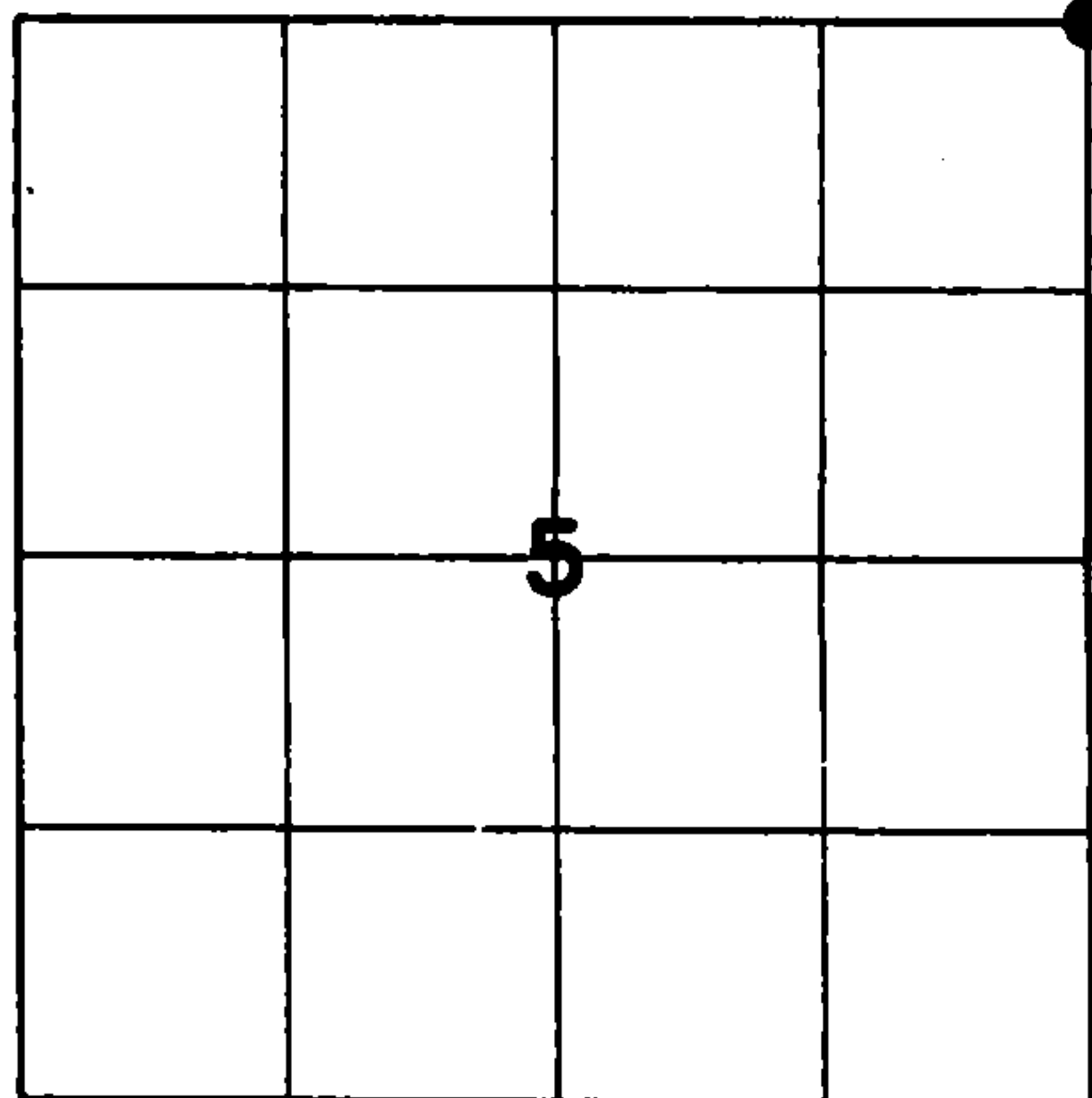
HEMLOCK 30 S35°E 13 LINKS

1960-KIMBERLY CLARK SET 1.25" PIPE WITH 4" CAP

1990- KELLY FOUND THE ALUM CAP AND SET ADDITIONAL TIES N30°W 13.87', N84°E 11.50', S30°W 60.62', N84°W 5.75'

2016-I FOUND THE 1.25" PIPE WITH 4" ALUMINUM CAP AND SET TIES AS SHOWN

● = LOCATION OF CORNER



SECTION 5

TOWNSHIP 33 NORTH, RANGE 13 EAST

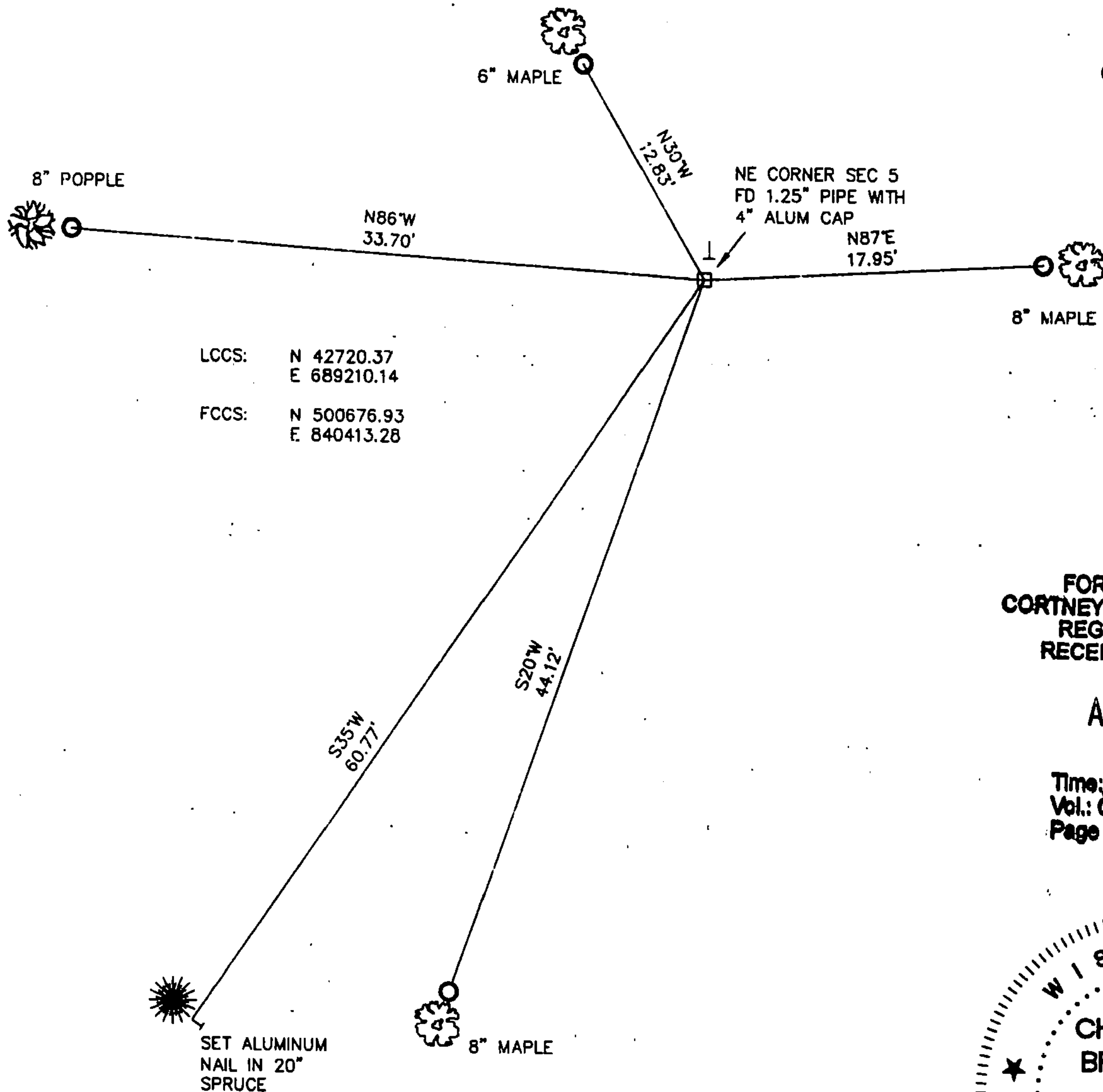
TOWN OF LANGLADE

LANGLADE COUNTY, WISCONSIN

CORNER WAS: (CHECK ALL THAT APPLY)

- ☐ RESTORED THROUGH ACCEPTANCE OF AN OBLITERATED EVIDENCE LOCATION
- ☒ RESTORED THROUGH ACCEPTANCE OF A FOUND PERPETUATED LOCATION
- ☐ CONSIDERED A LOST CORNER AND REESTABLISHED THROUGH LOST CORNER PROPORTIONATE METHODS (INCLUDE A PLAN VIEW DRAWING SHOWING DISTANCES AND DIRECTIONS TO OTHER PUBLIC LAND SURVEY CORNERS USED FOR PROPORTIONING AND DETERMINING THE CORNER LOCATION)
- ☐ RESTORED OR REESTABLISHED IN A LOCATION THAT DIFFERS FROM A PREVIOUS RESTORATION OR RE-ESTABLISHMENT (INCLUDE A PLAN VIEW DRAWING AND INDICATE WHAT WAS SET AND/OR FOUND)
- ☐ CHECK IF THERE IS ADDITIONAL INFORMATION ON BACK

DESCRIBE THE MONUMENT AND ACCESSORIES USED TO PERPETUATE THE LOCATION OF THE CORNER. (INCLUDE A PLAN VIEW DRAWING AND INDICATE WHAT WAS SET AND/OR FOUND) ALSO INCLUDE FOUR TIES TO THE SECTION CORNER AND DESCRIPTION OF THE TIES.



○ SET 3/4"X 30" IRON REBAR AT ALL TIE LOCATIONS

BEARINGS REFERENCED TO MAGNETIC

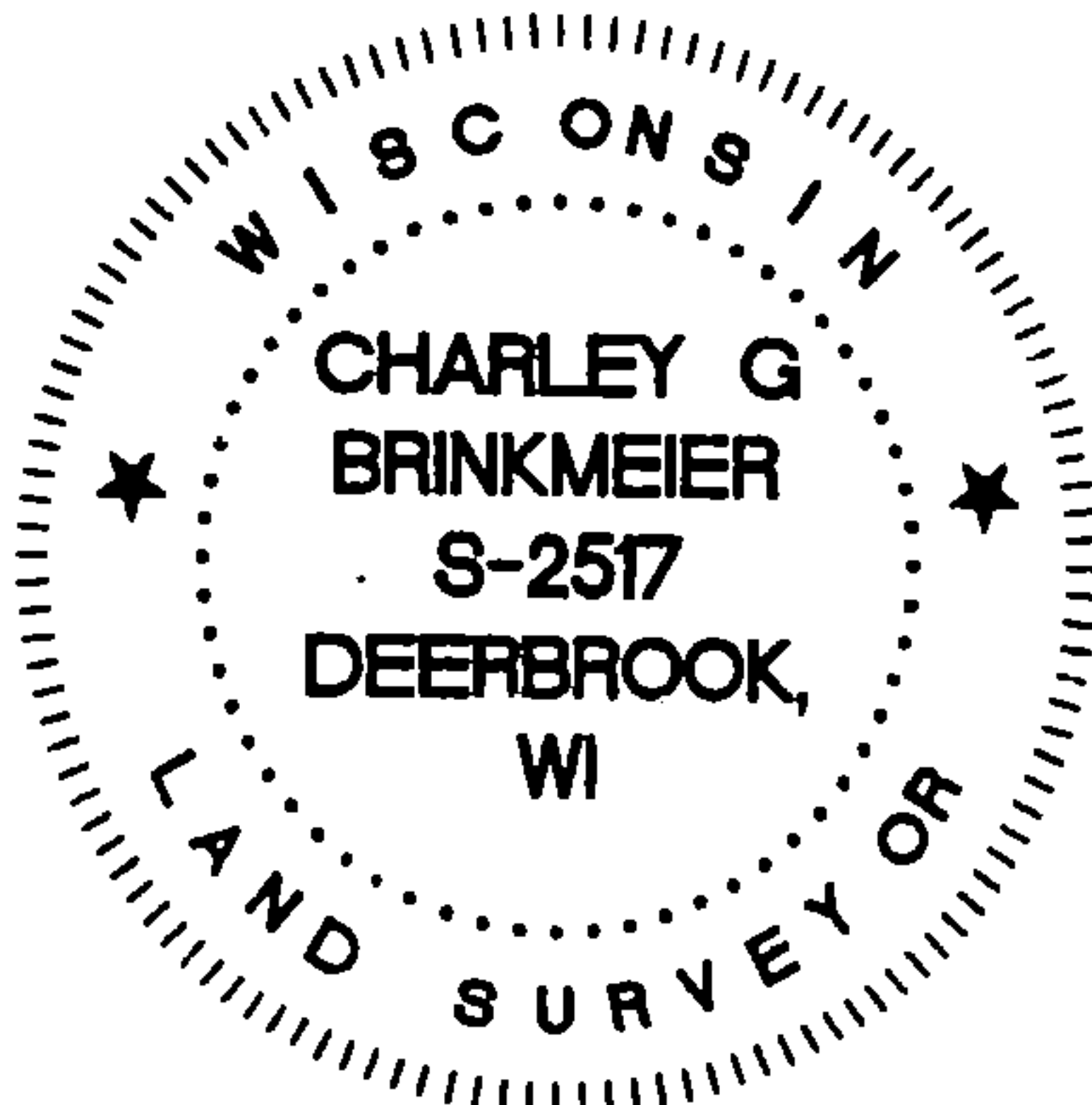
T - WHITE VINYL POST SET

TREES SHOWN HAVE BEARING TREE SIGNS NAILED TO FACE

FOREST COUNTY, WI  
CORTNEY BRITTEN CLEEREMAN  
REGISTER OF DEEDS  
RECEIVED FOR RECORD

APR 27 2018

Time: 10:00 A.M.  
Vol.: Corner Restoration  
Page Number: 2-9



INDEX NO.

CHARLEY G. BRINKMEIER

(type or print name) CERTIFY THAT THE CORNER LOCATION SHOWN ON THIS RECORD WAS DETERMINED BY ME OR UNDER MY DIRECTION AND CONTROL AND THAT THIS U.S. PUBLIC LAND SURVEY MONUMENT RECORD IS CORRECT AND COMPLETE TO THE BEST OF MY KNOWLEDGE AND BELIEF.

SIGNATURE

DATE

1-17-17

4341332 0000

# RESTORATION OF LOST ORIGINAL GOVERNMENT SURVEY CORNER

Index No. Z-90  
29

STATE OF WISCONSIN

I NEAL SPERHAKE, do hereby certify that on the ELEVENTH day of DECEMBER, 1962, I restored the SOUTHEAST SECTION CORNER of SECTION 32, TOWNSHIP 34 NORTH, RANGE 13 EAST, Fourth Principal Meridian, as described hereon.

Resident Witnesses:

Richard Piontek - Waubesa

This corner can also be described as: THE SECTION CORNER COMMON TO SECTIONS 4 AND 5, R33N-R13E, AND, 32 AND 33, T34N-R13E, 4TH P.M.

History of original corner establishment:

This corner was established during the original survey of this township, as noted in the Original Field Notes for the Original Survey of T34N-R13E, 4th p.m.

Description of monument and accessories I established to perpetuate the location of this corner.

At the point determined for the location of the corner I emplaced a:

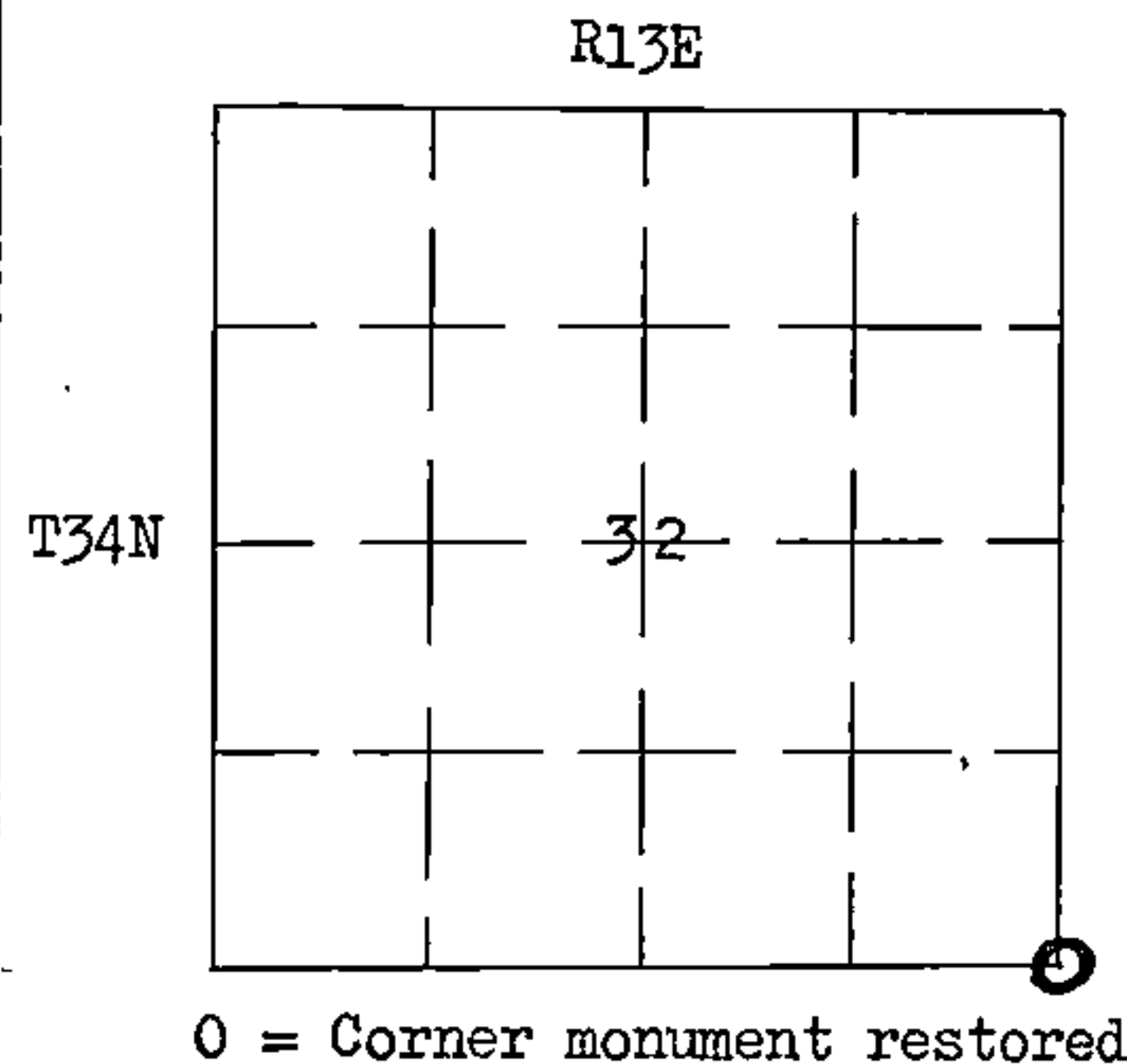
"GALVANIZED IRON PIPE, THREE FEET LONG, ONE INCH IN DIAMETER, WITH AN ALUMINUM CAP DENOTED AS, 'KIMBERLY-CLARK CORP T33-34N 32, 33, 4, 5, R13E SPERHAKE RLS 463 11-19-62".

The pipe is witnessed by:

Spruce 7 S29°W 91 links. (Scribed S 5 NBT).  
B. Cherry 3 N69°E 6½ links. (Scribed S33 NBT).  
B. Cherry 4 N68°W 33 links. (Scribed S32 NBT).

Description as to how corner was located:

No evidence of original corner present. To the west, the corner of 5, 6, 31, 32, had been previously established. To the east, the 1/4 cr. between 3 and 34 had been previously established. The distance between them is 200.07 chains. By proportionate measurement, the corner then would be 80.03 chains east of 5, 6, 31, 32, and 120.04 chains west of the 1/4 between 3 and 34, and on a straight line between the known corners. Exactly on line, but 1.21 chains east of this point is a fence corner. This fence runs north between 4 and 5, T33N-R13E, and at the town line turns to the west. No doubt it has been used to delineate the lands between 4 and 5, but there is no evidence that the fence junction has been considered to be the section corner. If the fence junction is thought to be the section corner, the line between 5 and 32 would be 81.24 chains long, and the line between 4 and 33 would be 78.82 chains long. Since the lines between 36 and 1, and 35 and 2 are each 80.06 chains long, and the line between 34 and 3 is 80.04 chains long, it is difficult to believe that the next two miles of 160.06 chains would have had the division noted above of 78.82 and 81.24 chains, respectively. If, therefore, the fence was ever meant to define the section line, I do not believe it was surveyed in properly. I have set the corner in the mathematically proportioned position noted above.



43413 32 0000

Dated at Crandon, Wis., this 11th day of April, 19 63

Signature [Signature] Title Registered Land Surveyor Registration No. S-463

~~Office of Register of Deeds~~, County of Forest, I hereby certify that the within  
instrument was ~~filed in this office for record~~ Signed and sworn to on the 11th day of April, 1963

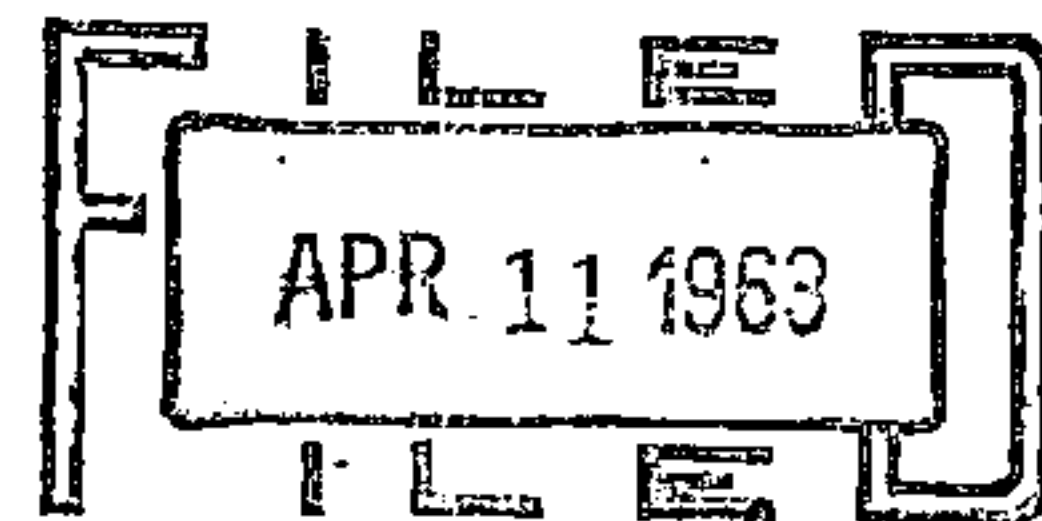
~~at~~ at o'clock PM

[Signature]  
Notary ~~(Registered)~~ Public  
Forest County, Wisconsin  
~~My~~ My commission expires Deputy

My Commission Expires  
February 6, 1966

86995

REGISTER'S OFFICE  
FOREST COUNTY, WIS.



At 2 o'clock PM  
Kurt A. Ungers Register of Deeds

Surveyor's Seal