

Electronically Filed on 5/5/2026

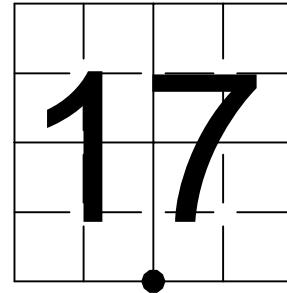
Forest County Land Information Office

U.S. PUBLIC LAND SURVEY MONUMENT RECORD

NOTE: This form is intended and designed to fulfill all requirements of Wisconsin Administrative Code, Chapter A-E 7.08 U.S. Public Land Survey Monument Record (3) (a-i)

A-E 7.08(3)(a) Identity of corner:
South 1/4 Corner Section 17,
Township 34 North, Range 14 East
of the Fourth Principal Meridian,
Town of Freedom, Forest County, Wisconsin

WISCORS - FOREST COUNTY
N: 516,678.532 USft (XXX,XXX.XXX)
E: 869,981.909 USft (XXX,XXX.XXX)
Datum: NAD83 (2011)
GNSS Method RTN
GNSS Control WISCORS VRS



The coordinate value shown has been verified by the average of two or more GPS observations at a markedly different time. Coordinates shown in parenthesis are previously published values.

A-E 7.08(3)(b)

Original Surveyor: James McBride - August 10, 1859 to August 20, 1859
Birch 10 - S 27° E, 9 Links, Birch 10 - N 62° W, 7 Links

See Forest County Map #341420-19780000 - 1978 - Surveyor S-802 - Jean F. Resvick

Note: Sheet 1 of 6 of said map suggests that the "corner position marked by 2 inch inside diameter galvanized iron pipe, with a 3 inch diameter brass tablet stamped to identify corner".

Note: Sheet 3 of 6 of said map suggests that the "corner position found marked by a PK nail in black top road".

Maple 10" - S 64° E, 36.77', Maple 8" S 60° W, 50.73'

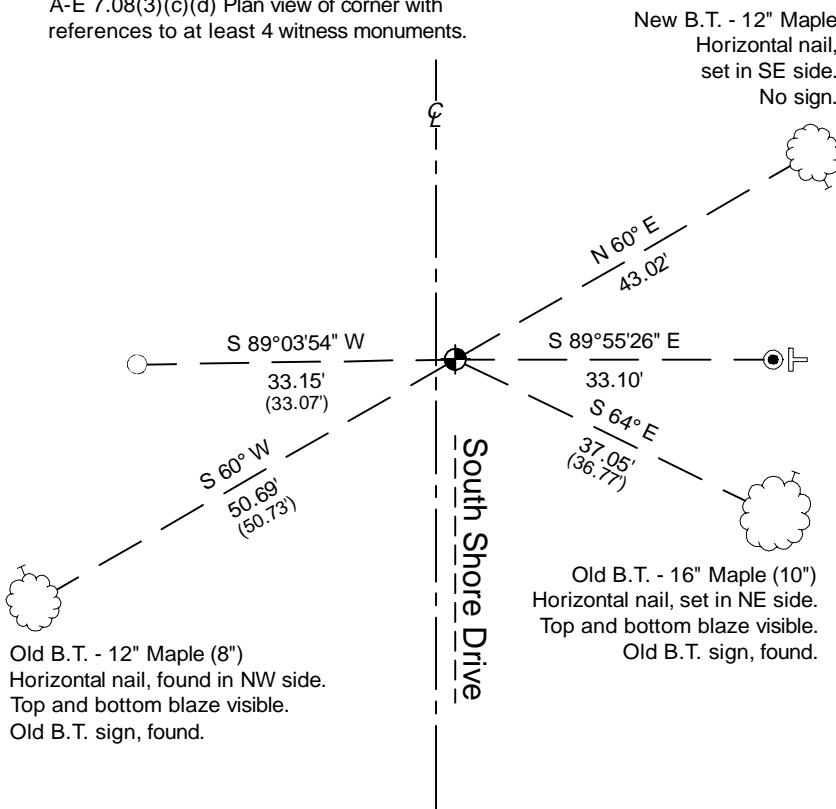
THENCE:

- February 8, 2002 - Surveyor 1301 - Hugh Guy Jr. - indicates this position as "section corner" on county record Map #341420-20020208.
- February 24, 2004 - Surveyor 1792 - Albert B. Simpson - indicates this position by symbol on county record Map #341417-20040224.
Note: Said map indicates the symbol represents a "corner perpetuation form filed in the Forest County Register of Deeds office".
- May 28, 2004 - Surveyor 1792 - Albert B. Simpson - indicates this position as "2.5" o.d. i.p. w/brass cap" on county record Map #341417-20040528.
- September 17, 2018 - Surveyor 2327 - Douglas E. Woelz - indicates this position as "possible monument below asphalt" on county record Map #341417-20180917.

March 31, 2026 - I found a 3" diameter brass cap stamped to identify the corner location. The monument is ±2 feet east of the South Shore Drive centerline, and is ±13" below grade. I also found 2 of Resvick's bearing trees alive and in good condition. I established 2 new reference monuments as shown below.

A-E 7.08(3)(c)(d) Plan view of corner with references to at least 4 witness monuments.

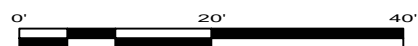
Bearings listed to the nearest second are referenced to the: Wisconsin Coordinate Reference System, Forest County Zone. All other bearings are magnetic.



LEGEND

Monument sizes = outside diameter measurements.

- This Corner
- Vinyl T-post, set ±1 foot east of iron pipe
- 1.75" diameter iron pipe, found
- 2.5" diameter iron pipe, found
- Galvanized nail, set or nail found as shown



A-E 7.08(3)(e) 1859 Surveyor set a post, 1978 Surveyor found a PK nail and presumably replaced it with a iron pipe monument with a brass cap, subsequent surveyors found similar, as did I in 2026.

A-E 7.08(3)(f) I accept this monument in good faith as a FOUND PERPETUATED LOCATION of the corner.

A-E 7.08(3)(g)(h) This corner was not determined through lost-corner-proportionate methods.

A-E 7.08(3)(i) I, Jeffrey L. DeMuth, Professional Land Surveyor No. S-2656, hereby certify that the corner location on this record was determined by me or under my direction and control, and that this U.S. Public Land Survey Monument Record is correct and complete to the best of my knowledge, and belief.



SIGNATURE

April 7, 2026

DATE

43414170020

43414170020