

241608

NOV 08 2023

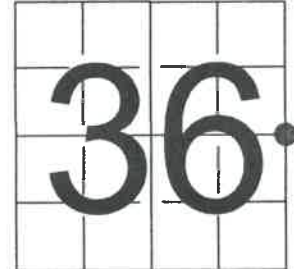
CORTNEY BRITTEN CLEEREMAN  
REGISTER OF DEEDS

**U S PUBLIC LAND SURVEY MONUMENT RECORD - ADDENDUM**

NOTE: This form is intended and designed to fulfill all requirements of Wisconsin Administrative Code, Chapter A-E 7.08 U.S. Public Land Survey Monument Record (3) (a-i)

A-E 7.08(3)(a) Identity of corner:  
EAST 1/4 CORNER SECTION 36,  
TOWNSHIP 34 NORTH,  
RANGE 13 EAST OF THE 4TH PM,  
TOWN OF NASHVILLE,  
COUNTY OF FOREST

WISCORS - FOREST COUNTY  
N: 503,165.222 USft (XXX,XXX.XXX)  
E: 861,542.938 USft (XXX,XXX.XXX)  
Datum: NAD83 (2011)  
GNSS Method RTK  
GNSS Control WISCORS



The coordinate value shown has been verified by the average of two or more GPS observations at a markedly different time. Coordinates shown in parenthesis are previously published values.

A-E 7.08(3)(b)

Original Surveyor: Alfred Millard

Date of Original Survey Commenced: August, 1857  
Completed: June, 1857

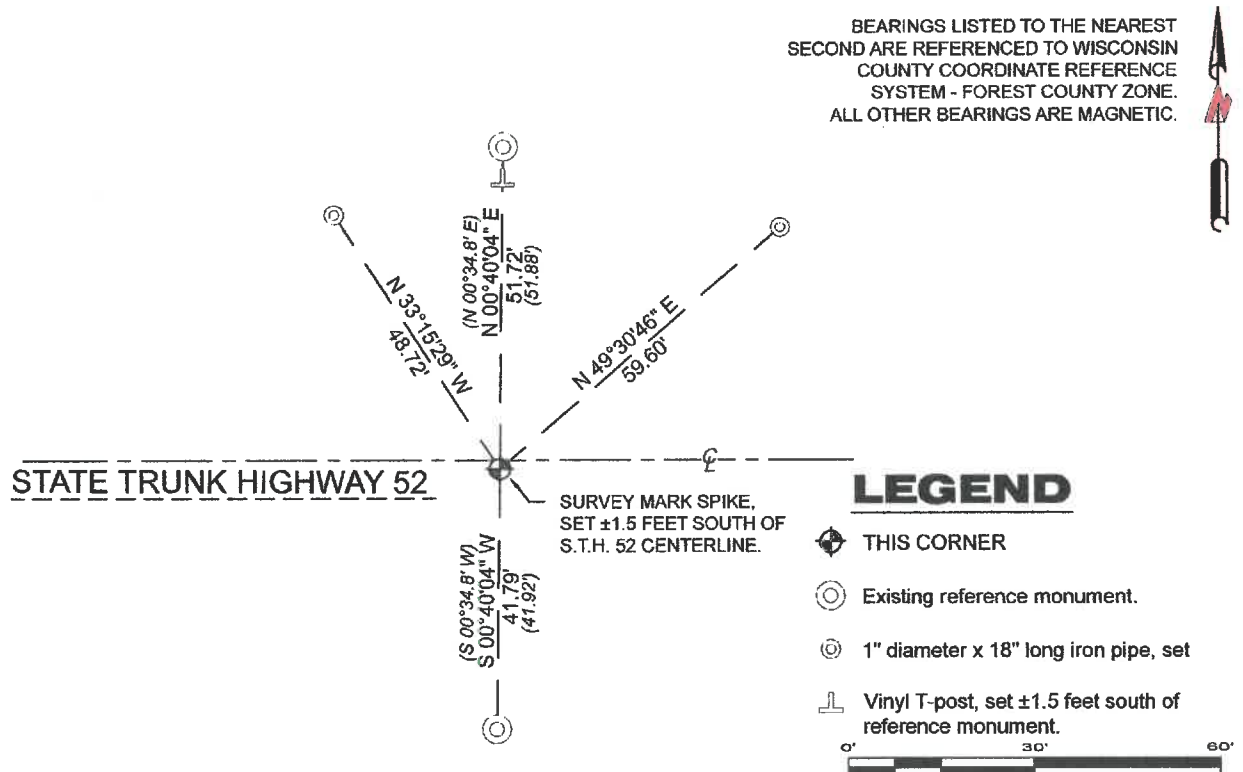
Original Accessories:  
Y. Birch 22 N 52° W 15 Links  
Elm 18 S 18° E 40 Links

See previous U.S. Public Land Survey Monument Record dated February 19, 1985 - Index X 1 - Surveyor 1558 - Milo E. Stefan  
(Note: previous monument record lists this corner by the Romportl numbering system as 43413360020)

Thence:

January 18, 2022 - I did not find Stefan's railroad spike. I found Stefan's north and south reference monuments, and reestablished the corner location by setting a steel Survey Mark spike with a 1" diameter head and 4" long.  
I established 2 new reference monuments as shown below.

A-E 7.08(3)(c)(d) Plan view of corner with references to at least 4 witness monuments.



A-E 7.08(3)(e) 1857 Surveyor set a post, 1985 Surveyor set a railroad spike. 2023 I set a steel Survey Mark spike.

A-E 7.08(3)(f) I restored the corner through ACCEPTANCE OF AN OBLITERATED LOCATION.

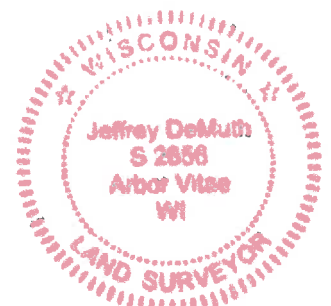
A-E 7.08(3)(g)(h) This corner was previously determined through lost-corner-proportionate methods.

A-E 7.08(3)(i) I, Jeffrey L. DeMuth, Professional Land Surveyor No. S-2656, hereby certify that the corner location on this record was determined by me or under my direction and control, and that this U.S. Public Land Survey Monument Record is correct and complete to the best of my knowledge, and belief.

SIGNATURE

April 11, 2023

DATE



43414362000

X1