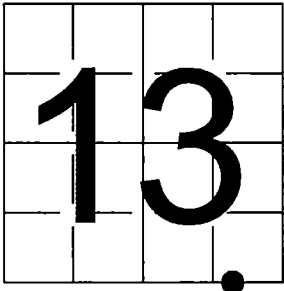


U. S. PUBLIC LAND SURVEY
MONUMENT RECORD

NOTE: This form is intended and designed to fulfill all requirements of Wisconsin Administrative Code, Chapter A-E 7.08 U.S. Public Land Survey Monument Record (3) (a-i)

A-E 7.08(3)(a) Identity of corner:
Meander Corner - South line Section 13,
Township 34 North, Range 16 East
of the Fourth Principal Meridian,
Town of Wabeno, Forest County, Wisconsin

WISCRS - FOREST COUNTY
N: 515,869.497 USft (XXX,XXX.XXX)
E: 957,024.030 USft (XXX,XXX.XXX)
Datum: NAD83 (2011)
GNSS Method RTN
GNSS Control WISCORS VRS



The coordinate value shown has been verified by the average of two or more GPS observations at a markedly different time. Coordinates shown in parenthesis are previously published values.

A-E 7.08(3)(b)

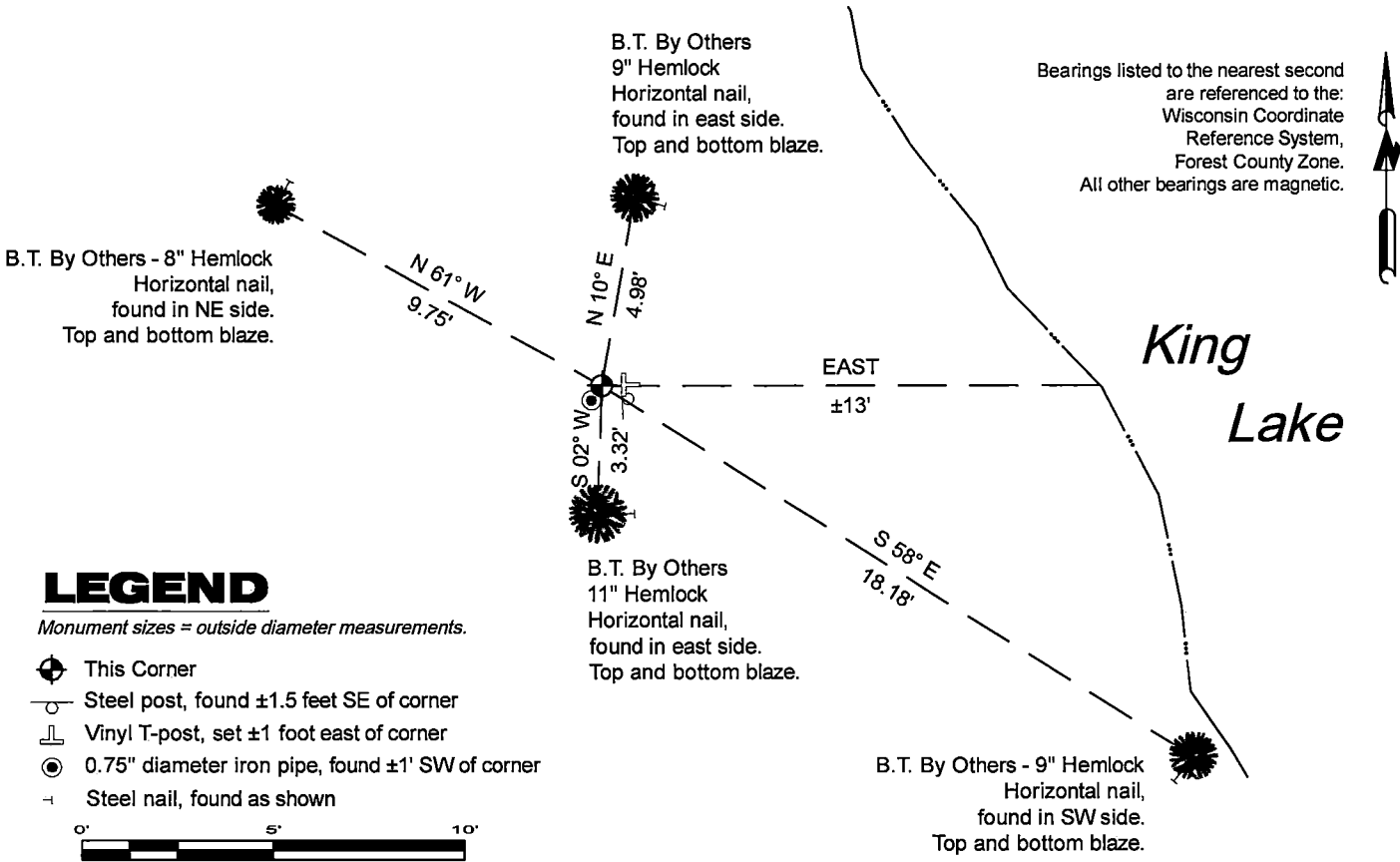
Original Surveyor: James McBride - August, 1858
Hemlock 14 - N 43° E, 9 Links, Hemlock 18 - S 54° E, 16 Links

THENCE:

- 1981 - Surveyor 1558 - Milo E. Stefan - indicates this position as "iron pipe found" on county record Map #341613-19841228.
- September 27, 2004 - Surveyor 1259 - Kim H. Pritzlaff - indicates this position as "1" iron pipe found" on county record Map #341613-20041029.
- 1986 - Surveyor 1259 - Kim H. Pritzlaff - indicates this position as "existing iron pipe monument" on county record Map #341624-19861023.
- February 7, 2017 - Surveyor 2617 - Jeffrey M. Lieuwen - indicates this position as "found 1" pipe" on county record Map #341613-20170213.

August 25, 2025 - I found a 2.4" diameter aluminum pipe monument with a 3.25" diameter aluminum cap stamped to identify the corner location. The monument is ±13 feet west of the shore of King lake, flush with grade and stamped by Surveyor S-2546 - Thomas M. Healy - 2004. I also found 4 existing bearing trees by others and a 0.75" diameter iron pipe. I measured the 4 existing bearing trees as shown below.

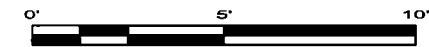
A-E 7.08(3)(c)(d) Plan view of corner with references to at least 4 witness monuments.



LEGEND

Monument sizes = outside diameter measurements.

- ⊕ This Corner
- Steel post, found ±1.5 feet SE of corner
- ⊥ Vinyl T-post, set ±1 foot east of corner
- 0.75" diameter iron pipe, found ±1' SW of corner
- Steel nail, found as shown



A-E 7.08(3)(e) 1858 Surveyor set a post, 1981 to 2017 Surveyors found a pipe, I found a 2.4" diameter aluminum pipe monument with a 3.25" diameter aluminum cap stamped to identify the corner location in 2025.

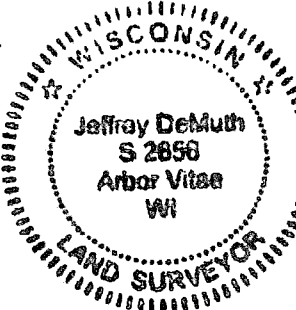
A-E 7.08(3)(f) I accept this monument in good faith as a FOUND PERPETUATED LOCATION of the corner.
A-E 7.08(3)(g)(h) This corner was not determined through lost-corner-proportionate methods.

A-E 7.08(3)(i) I, Jeffrey L. DeMuth, Professional Land Surveyor No. S-2656, hereby certify that the corner location on this record was determined by me or under my direction and control, and that this U.S. Public Land Survey Monument Record is correct and complete to the best of my knowledge, and belief.

Signature

September 16, 2025

Date



43416130008