

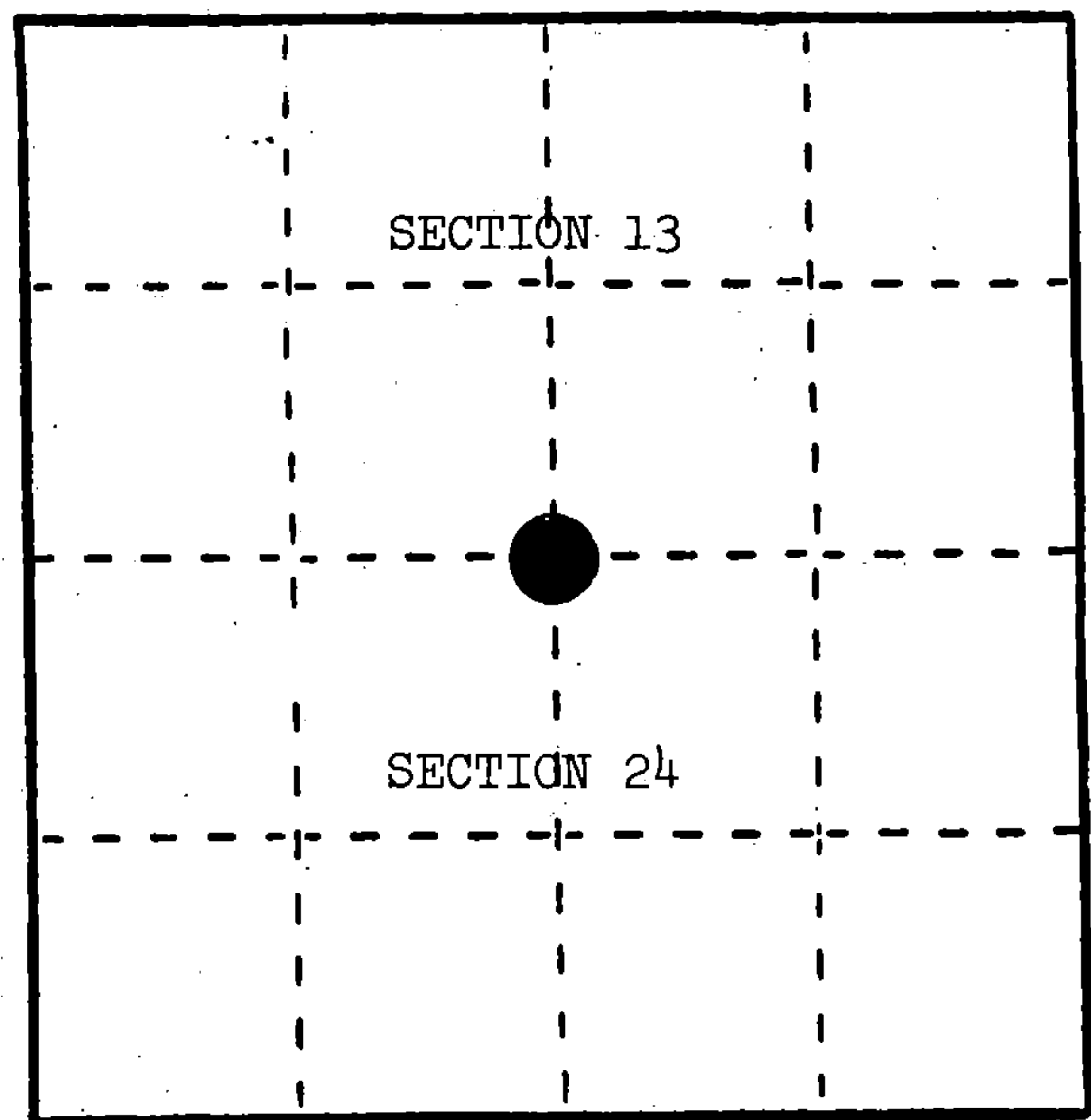
# U. S. PUBLIC LAND SURVEY MONUMENT RECORD

**INSTRUCTIONS:** This record shall show the location of the corner and shall include all of the following nine elements (a through i).

(a) Identify the corner by reference to the U.S. public land survey system.

○ = Corner monument restored.

Quarter corner to Sections 13 and 24, T.34N., R.16E.



(b) Describe any record evidence, monument evidence, occupational evidence, testimonial evidence or any other material evidence you considered, and whether the monument was found or placed.

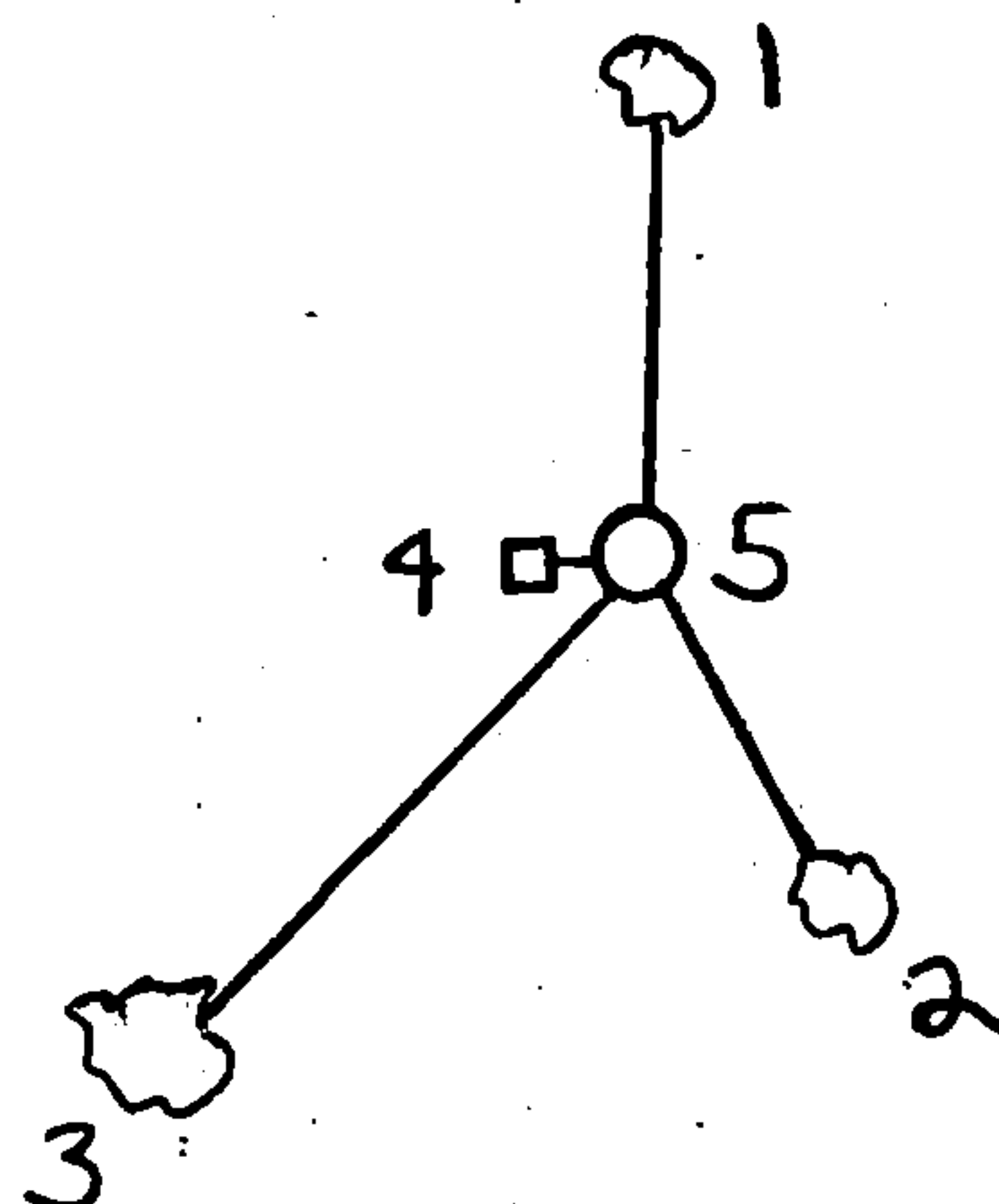
In 1858, James McBride set quarter section post with the following BTs: Hemlock, 10", S.37°E., 9 links; Sugar, 10", N.07°W., 7 links.

July 8, 1981, Milo Stefan found a 7/8" steel rod 2' long with 90° bend on end 2" long; 4-sided blazed 3" Sugar, N.30°W., approximately 30' from iron; stump holes at S.37°E., 6' and N.7°W., 5' from iron bar. Replaced iron rod with a 2" x 36" aluminum pipe.

(c) In the plan view drawing below, provide reference ties to at least 4 witness monuments, or, if the location is within a municipality, to at least 2 witness monuments. (Witness monuments shall be made of concrete, natural stone, iron or other equally durable material.) Describe witness monuments.

(d) Show a plan view drawing depicting the relevant monuments and reference ties which is sufficient in detail to enable accurate relocation of the corner monument if the corner monument is disturbed. Indicate north.

1. Sugar, 5", N.05°E., 19.82'
2. Basswood, 7", S.19°E., 13.49'
3. Sugar, 7", S.29°W., 31.18'
4. Steel Sign Post, West, 1.6'
5. 2" x 36" aluminum pipe stamped to identify the corner.



REGISTER'S OFFICE }  
Forest County, Wis. }  
Received for record this 24th day  
of January A.D., 1985 at  
10:30 o'clock A.M. and  
recorded in Vol. CORNER RESTORATIONS  
on page 23  
Paul Aschenbrenner  
REGISTER

(e) Describe any material discrepancy between the location of the corner as restored or reestablished and the location of that corner as previously restored or reestablished by distance and direction. Show the discrepancy on the plan view drawing under (d), above. Show the distances between the corner as previously restored or reestablished and (1) the corner as restored or reestablished, and (2) to at least 2 of the witness monuments shown on the drawing in (d), above.

(f) Was the corner restored through acceptance of (1) an obliterated evidence location, or, (2) a found perpetuated location?

(2) a found perpetuated location.

(g&h) Was the corner reestablished through lost corner proportionate methods? If so, show the method, including the directions and distances to other public land survey corners used as evidence or used for proportioning in determining the corner location?

No.

Affix Land Surveyor Seal



Milo E. Stefan

(1) I, Milo E. Stefan (type or print name) certify that the corner location shown on this record was determined by me or under my direction and control and that this U.S. Public Land Survey Monument Record is correct and complete to the best of my knowledge and belief.

Signature

Date

11/30/84



REGISTER'S OFFICE  
Forest County, Wis.  
Received for record this 18<sup>th</sup> day  
of November A.D., 2005 at  
3:55 o'clock P.M. and recorded  
in Vol. Corner Restoration  
page N-23  
Kay Swanson, Deputy  
Register of Deeds

Document Number  
189317

U.S. PUBLIC LAND SURVEY MONUMENT RECORD

(AS REQUIRED BY S. A-E 5.02, WI ADM. CODE)

HISTORY OF ORIGINAL CORNER ESTABLISHMENT AND SUBSEQUENT RESTORATIONS AND DESCRIPTION OF ANY RECORD, MONUMENT, OCCUPATIONAL, TESTIMONIAL, OR OTHER EVIDENCE CONSIDERED:

1858 - JAMES McBRIDE, SURVEYOR, SET POST

SET THE FOLLOWING WITNESSES:  
SUGAR MAPLE 10" N07°W 7 LINKS  
HEMLOCK 10" S37°E 9 LINKS

1981 - MILO STEFAN, SURVEYOR, S-1558, FOUND A 7/8" STEEL ROD 2' LONG WITH A 90° BEND ON THE END 2" LONG. 4-SIDED BLAZED 3" SUGAR, N30°W, APPROXIMATELY 30' FROM IRON. STUMP HOLES AT S37°E - 6', AND N07°W - 5' FROM IRON BAR. REPLACED IRON ROD WITH A 2" X 36" ALUMINUM PIPE.

1984 - MILO STEFAN, SURVEYOR, S-1558, PERPETUATED A FOUND LOCATION WITH A 2" X 36" ALUMINUM PIPE STAMPED TO IDENTIFY THE CORNER WITH THE FOLLOWING WITNESSES:

SUGAR MAPLE 5" N05°E 19.82 FEET  
BASSWOOD 7" S19°E 13.49 FEET  
SUGAR MAPLE 7" S29°W 31.18 FEET  
STEEL SIGN WEST 1.6 FEET

CORNER WAS: (CHECK ALL THAT APPLY)

- ☐ RESTORED THROUGH ACCEPTANCE OF AN OBLITERATED LOCATION  
☒ RESTORED THROUGH ACCEPTANCE OF A FOUND PERPETUATED LOCATION  
☐ CONSIDERED A LOST CORNER AND REESTABLISHED THROUGH LOST CORNER PROPORTIONATE METHODS (INCLUDING A PLAN VIEW DRAWING SHOWING DISTANCES AND DIRECTIONS TO OTHER PUBLIC LAND SURVEY CORNERS USED FOR PROPORTIONING AND DETERMINING THE CORNER LOCATION)  
☐ RESTORED OF REESTABLISHED IN A LOCATION THAT DIFFERS FROM A PREVIOUS RESTORATION OF REESTABLISHMENT (INCLUDE A PLAN VIEW DRAWING AND INDICATE WHAT WAS SET AND/OR FOUND)

DESCRIBE THE MONUMENT AND ACCESSORIES USED TO PERPETUATE THE LOCATION OF THIS CORNER. (INCLUDE A PLAN VIEW DRAWING AND INDICATE WHAT WAS SET AND/OR FOUND)

FOUND A 3" STAMPED ALUMINUM CAP.

FOUND THE FOLLOWING WITNESSES:

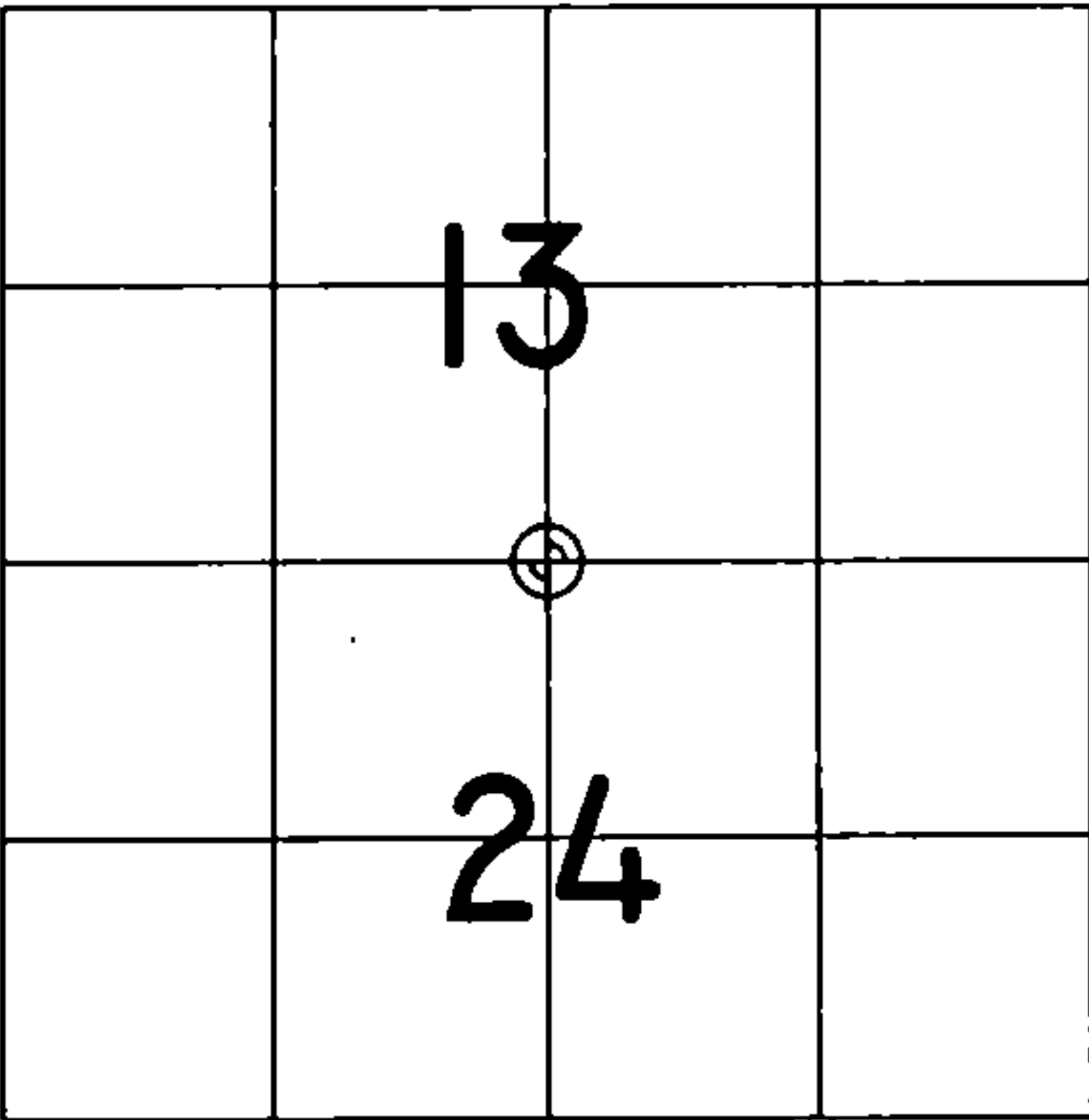
BASSWOOD 8" S15°E 13.36 FEET - SET D.H. NAIL IN TREE.  
MAPLE 10" N11°E 19.95 FEET - FOUND SINGLE HEADED NAIL IN TREE.  
MAPLE 10" S38°W 31.16 FEET - SET D.H. NAIL IN TREE.

SET THE FOLLOWING WITNESSES:

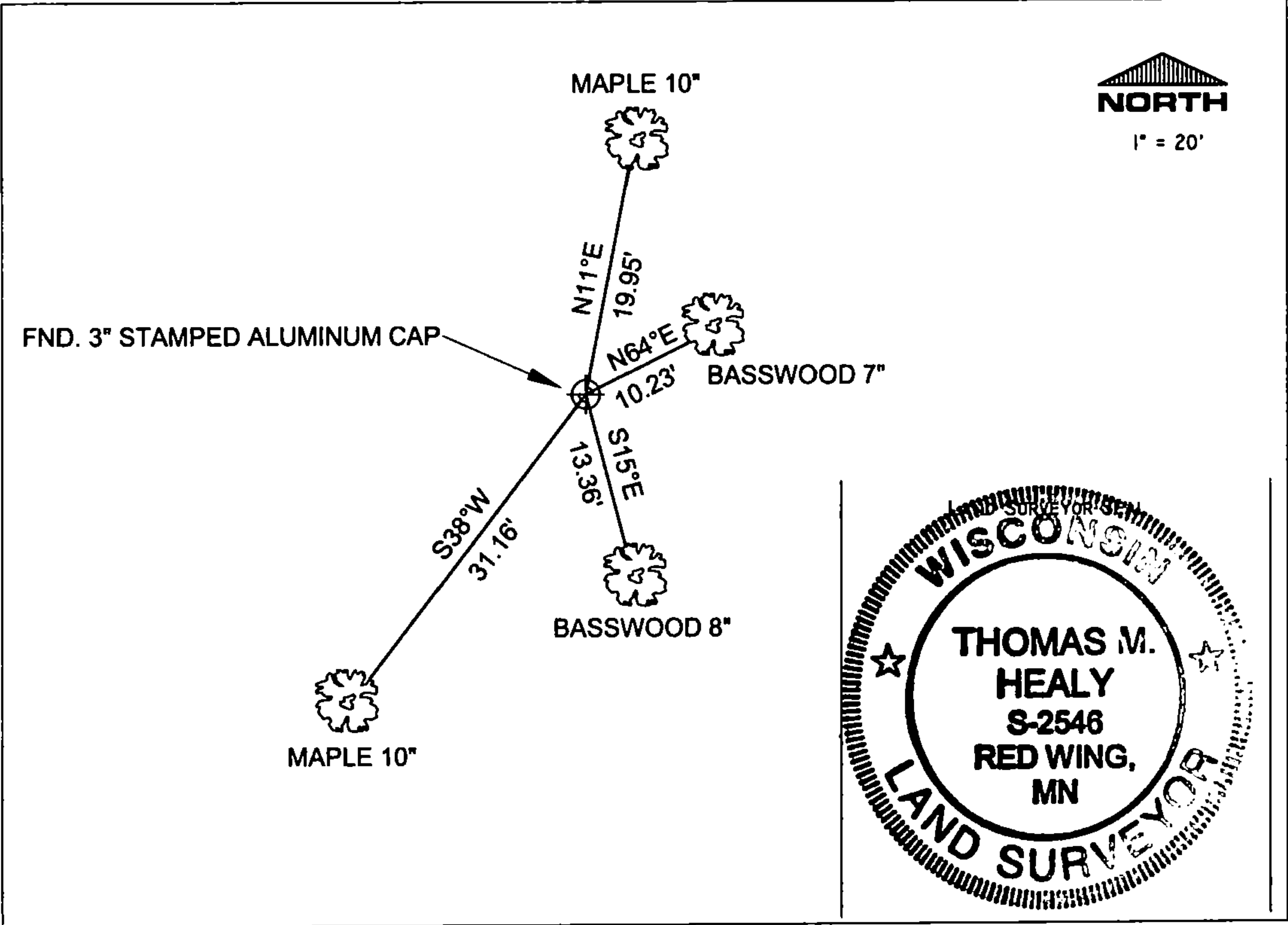
BASSWOOD 7" N64°E 10.23 FEET - SET D.H. NAIL IN TREE.

ALL TREES HAVE CHEST AND STUMP BLAZES.

THE NORTH 1/4  
CORNER OF SECTION 24,  
T. 34 N., R. 16 E.,  
FOREST COUNTY, WISCONSIN



⊕ = LOCATION OF CORNER



I, THOMAS M. HEALY R.L.S. 2546

INDEX No. N-23

(TYPE OR PRINT NAME) CERTIFY THAT THE CORNER LOCATION SHOWN ON THIS ABOVE RECORD WAS DETERMINED BY ME OR UNDER MY DIRECTION AND CONTROL AND THAT THIS U.S. PUBLIC LAND SURVEY MONUMENT RECORD IS CORRECT AND COMPLETE TO THE BEST OF MY KNOWLEDGE AND BELIEF.

THOMAS M. HEALY 11-17-05  
SIGNATURE DATE

43416130020

N-23