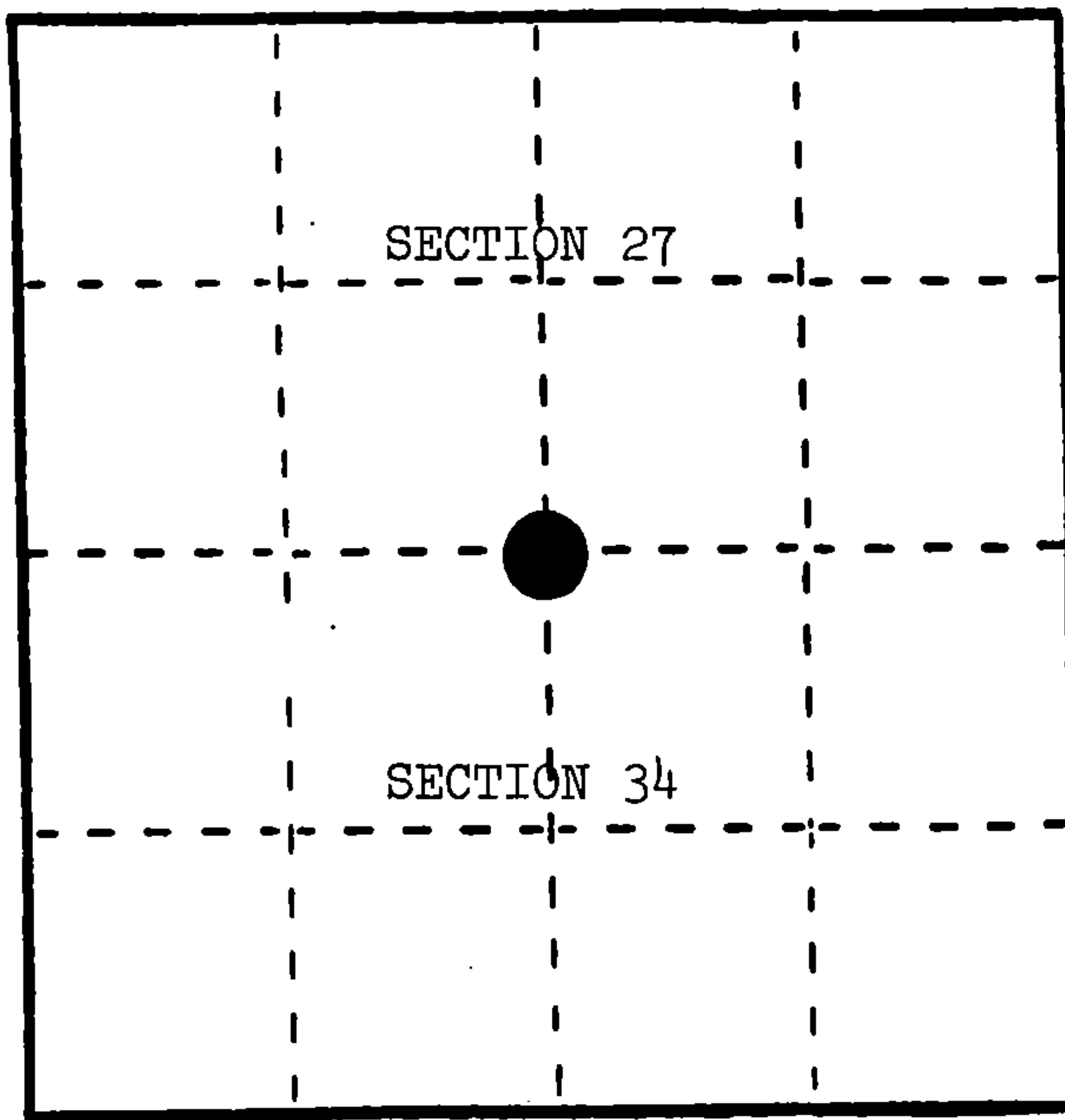


# U. S. PUBLIC LAND SURVEY MONUMENT RECORD

**INSTRUCTIONS:** This record shall show the location of the corner and shall include all of the following nine elements (a through i).

- (a) Identify the corner by reference to the U.S. public land survey system.  
○ = Corner monument restored.

Quarter corner to Sections 27 and 34, T.34N., R.16E.



- (b) Describe any record evidence, monument evidence, occupational evidence, testimonial evidence or any other material evidence you considered, and whether the monument was found or placed.

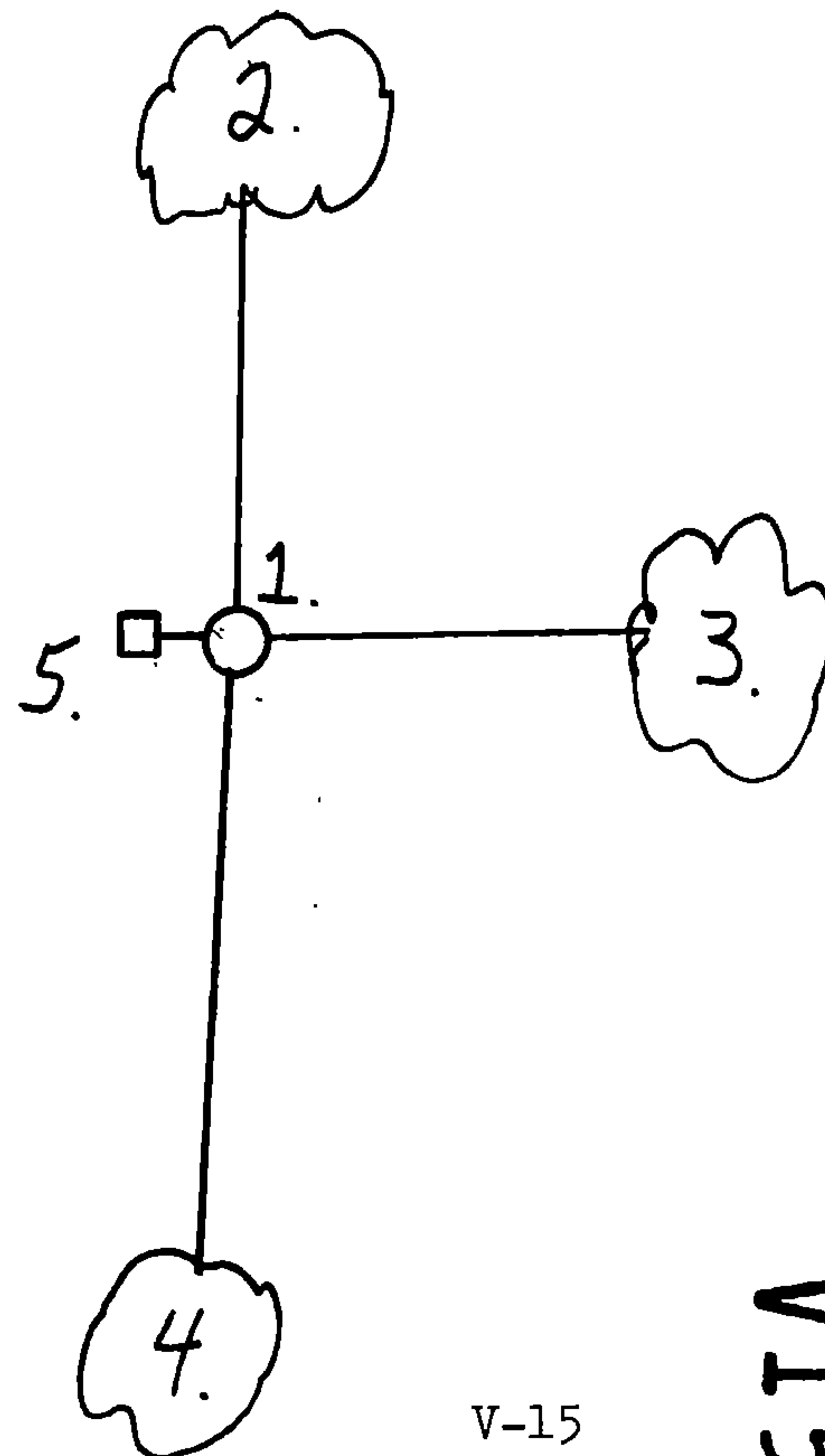
In 1858, James McBride set wood post with the following BTs: Sugar, 10", S.29°W., 14 links; Hemlock, 10", N.8°E., 39 links. 5 chains east, enter Cedar swamp, bears northeast and southwest. 10.70 chains east, stream 10 links wide, runs southwest.

August 9, 1984, Alan Harrison set proportionate position--conducted search, found no evidence of corner. Position falls in a 10' x 12' excavation, 5' deep (possibly a root cellar). East, 340', is swamp edge. Corner is in 3 acre opening--old homestead.

- (c) In the plan view drawing below, provide reference ties to at least 4 witness monuments, or, if the location is within a municipality, to at least 2 witness monuments. (Witness monuments shall be made of concrete, natural stone, iron or other equally durable material.)  
Describe witness monuments.

- (d) Show a plan view drawing depicting the relevant monuments and reference ties which is sufficient in detail to enable accurate relocation of the corner monument if the corner monument is disturbed. Indicate north.

- 2" x 30" aluminum monument stamped to identify the corner; placed in the excavation pit.
- Black Cherry, 5", N.2°E., 28.87'
- Rock Elm, 12", N.85°E., 17.54'
- Aspen, 13", S.9°W., 49.13'
- Steel Sign Post, West, 3.64'



REGISTER'S OFFICE }  
Forest County, Wis. }  
Received for record this... day  
of... A.D., 19... at  
... o'clock... A.M. and  
recorded in Vol. ...  
on page ...  
CORNER RESTORATIONS  
V-15  
Paul Aschenbrenner  
REGISTER

- (e) Describe any material discrepancy between the location of the corner as restored or reestablished and the location of that corner as previously restored or reestablished by distance and direction. Show the discrepancy on the plan view drawing under (d), above. Show the distances between the corner as previously restored or reestablished and (1) the corner as restored or reestablished, and (2) to at least 2 of the witness monuments shown on the drawing in (d), above.

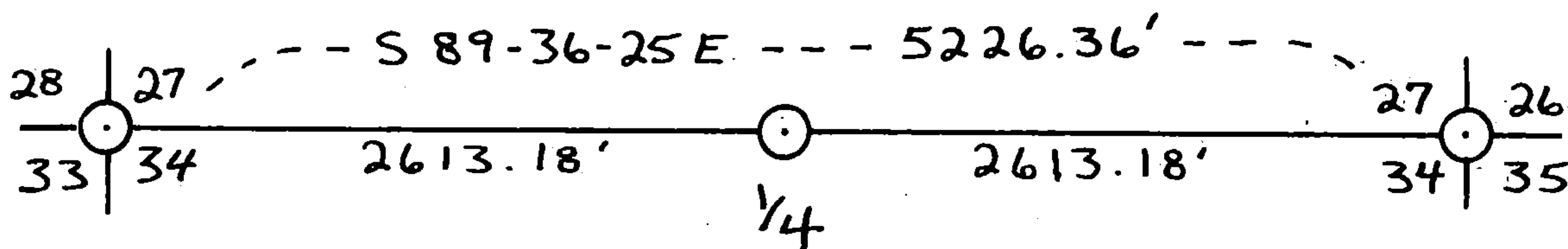
None.

- (f) Was the corner restored through acceptance of (1) an obliterated evidence location, or, (2) a found perpetuated location?

Neither.

- (g&h) Was the corner reestablished through lost corner proportionate methods? If so, show the method, including the directions and distances to other public land survey corners used as evidence or used for proportioning in determining the corner location?

Yes.

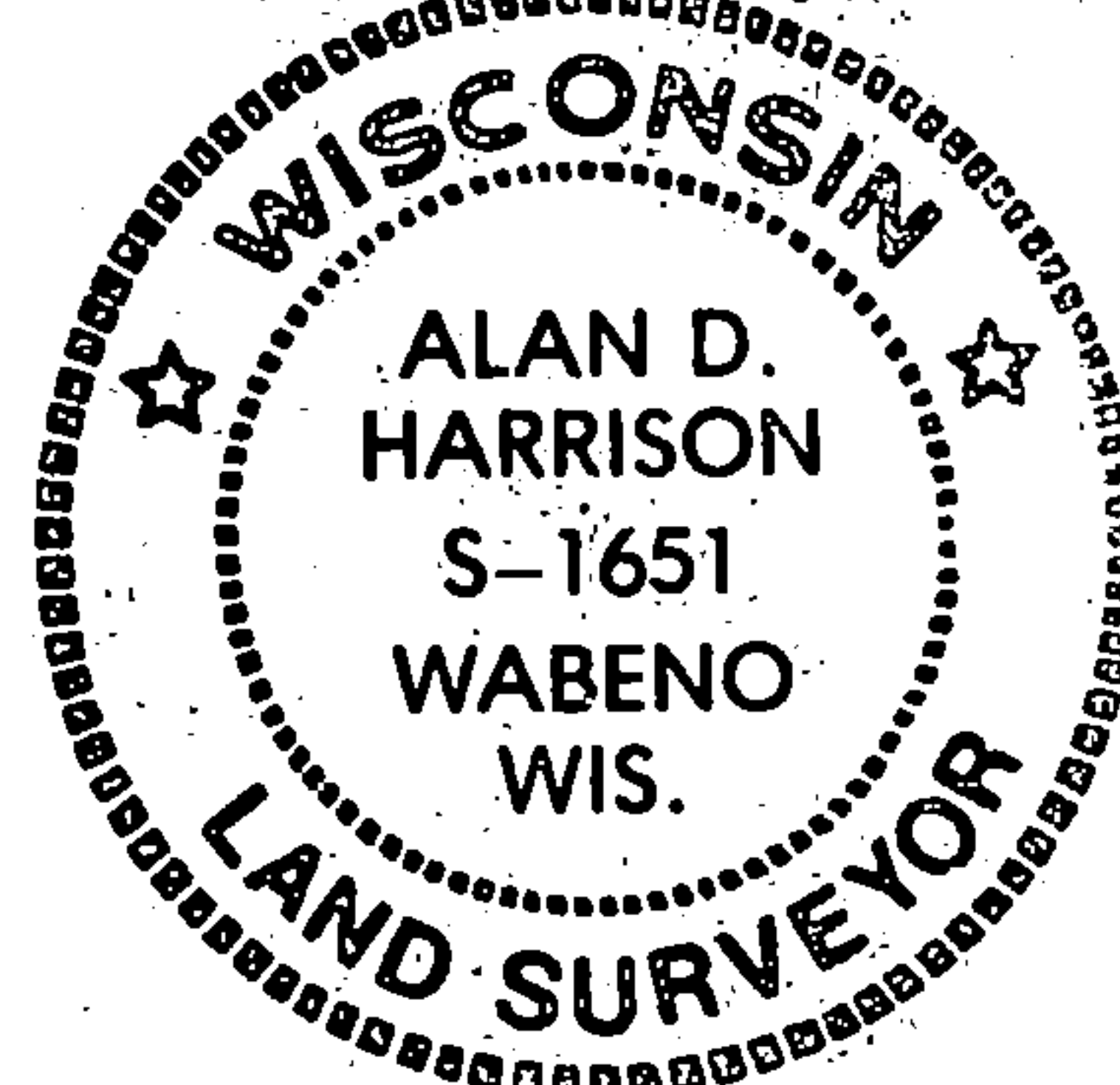


- (i) I, Alan D. Harrison  
(type or print name) certify that the corner location shown on this record was determined by me or under my direction and control and that this U.S. Public Land Survey Monument Record is correct and complete to the best of my knowledge and belief.

Signature

Date

Affix Land Surveyor Seal



12/12/84

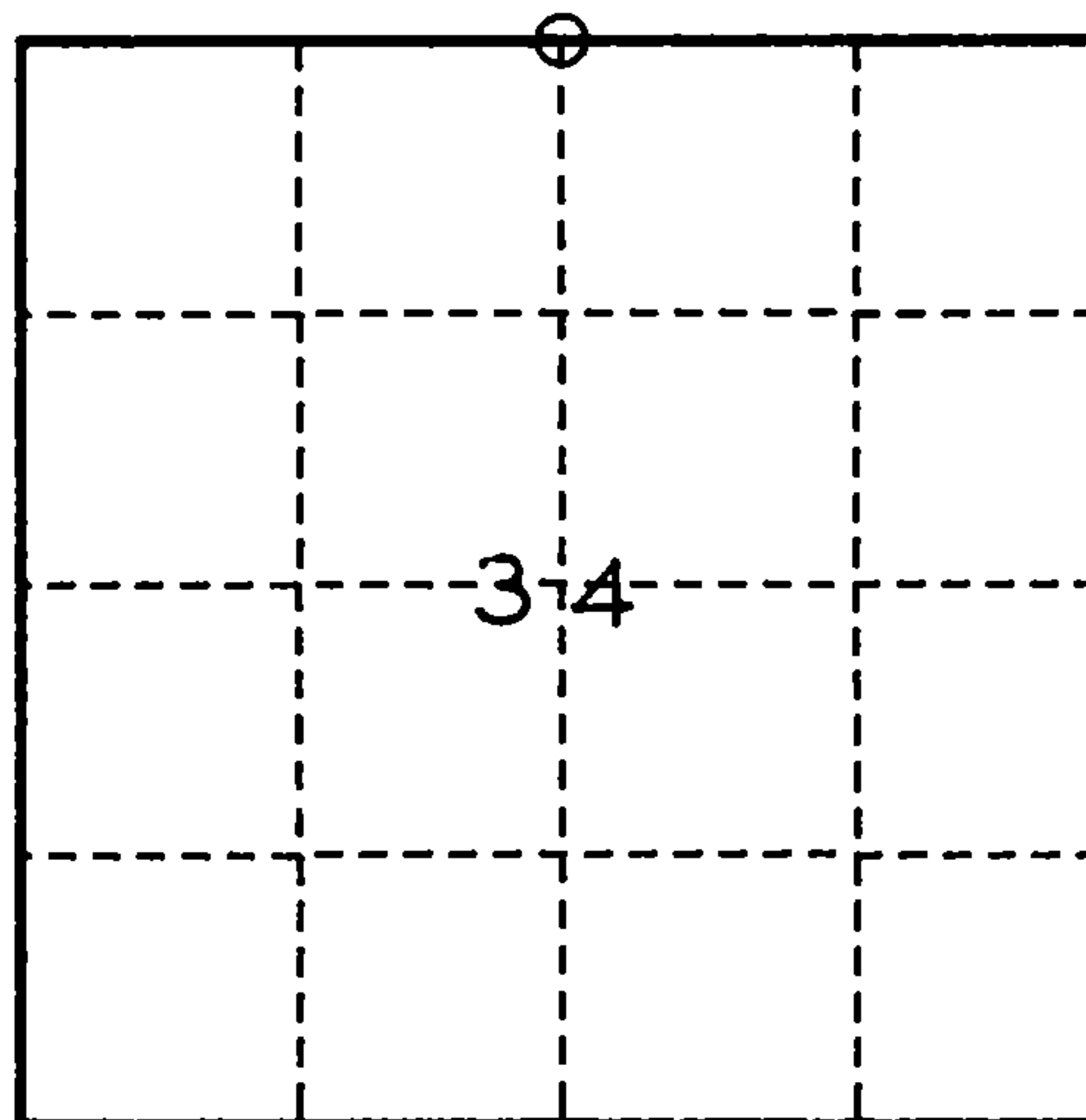
## U. S. PUBLIC LAND SURVEY MONUMENT RECORD

## INSTRUCTIONS:

This record shall show the location of the corner and shall include all of the following nine elements (a through i).

- (a) Identify the corner by reference to the U.S. public land survey system.  
 ○ = Corner monument restored.

NORTH  $\frac{1}{4}$  CORNER OF SECTION 34, TWP.34 N.,  
 R. 16 E.



- (b) Describe any record evidence, monument evidence, occupational evidence, testimonial evidence or any other material evidence you considered, and whether the monument was found or placed.

1858 - ORIGINAL SURVEY BY McBRIDE, SET WOOD POST AT  $\frac{1}{4}$  CORNER, B.Ts - SUGAR 10" S.29°W. 14 LKS., HEMLOCK 10" N.8°E. 39 LKS.

1984 - HARRISON R.L.S. NO.S-1651, SET 2" DIA. ALUMINUM MONUMENT AT  $\frac{1}{4}$  CORNER WHICH FALLS IN A HOLE 5 FT. DEEP. B.Ts -BLACK CHERRY 5" N.2°E. 28.87FT., ROCK ELM 12" N.85°E. 17.54FT., ASPEN 13" S.9°W. 49.13FT., WITNESS - STEEL SIGN POST WEST 3.64FT.

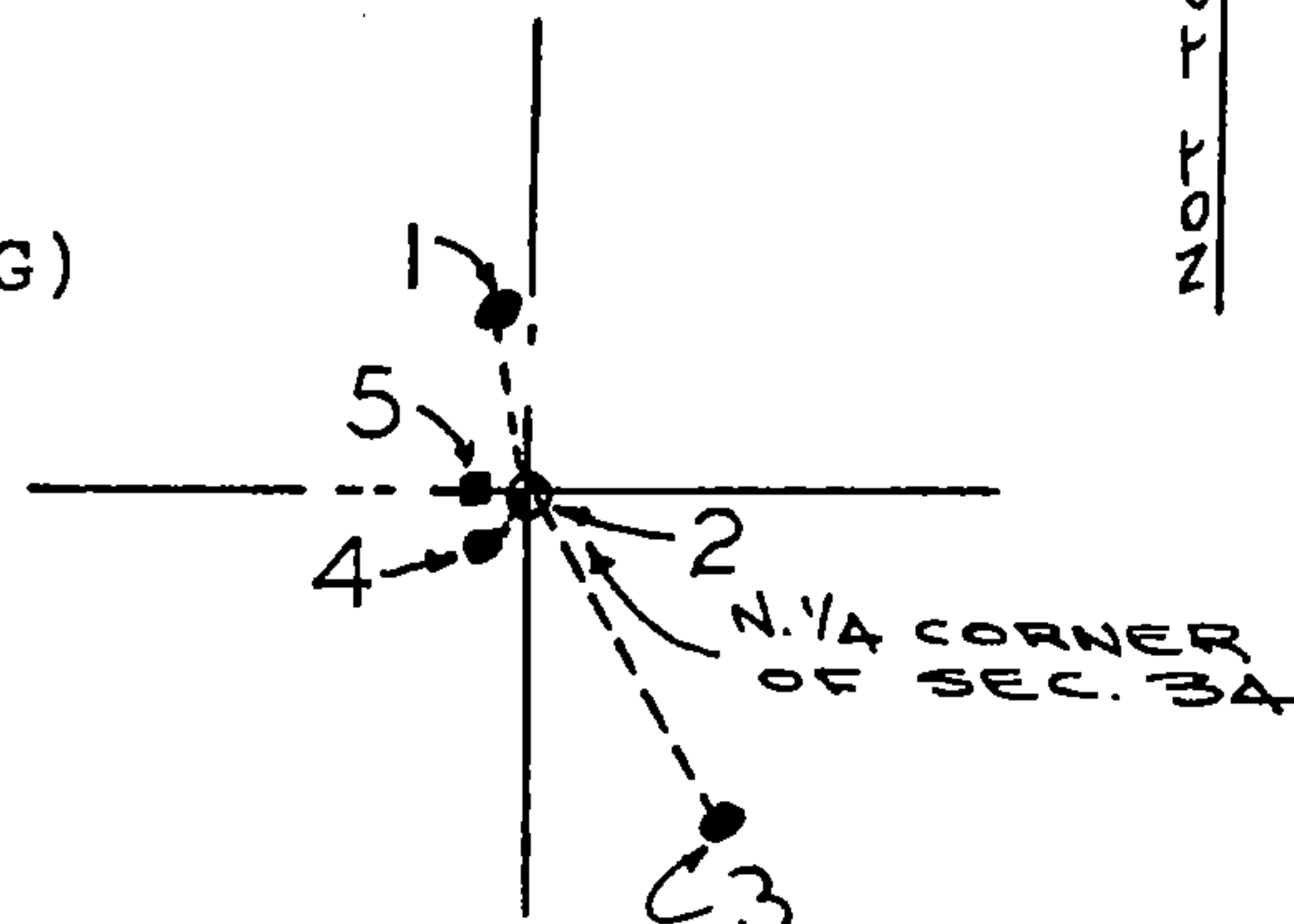
1993 - DOBBRATZ, R.L.S. NO.S-973, FOUND MONUMENT AND SIGN POST AS NOTED, ALL B.Ts ARE DEAD OR DOWN.

- (c) In the plan view drawing below, provide reference ties to at least 4 witness monuments, or, if the location is within a municipality, to at least 2 witness monuments. (witness monuments shall be made of concrete, natural stone, iron or other equally durable material.)

- (d) Show a plan view drawing depicting the relevant monuments and reference ties which is sufficient in detail to enable accurate relocation of the corner monument if the corner monument is disturbed. Indicate north.

## WITNESS

1. B.T. ASPEN 6" N.8°W. 13.88FT. (NEW)
2. 2" DIA. ALUMINUM MONUMENT AT  $\frac{1}{4}$  CORNER (EXISTING)
3. B.T. ASPEN 7" S.30°E. 30.60FT. (NEW)
4. B.T. BLACK CHERRY 7" S.52°W. 3.05FT. (NEW)
5. STEEL SIGN POST WEST 3.64FT. (EXISTING)



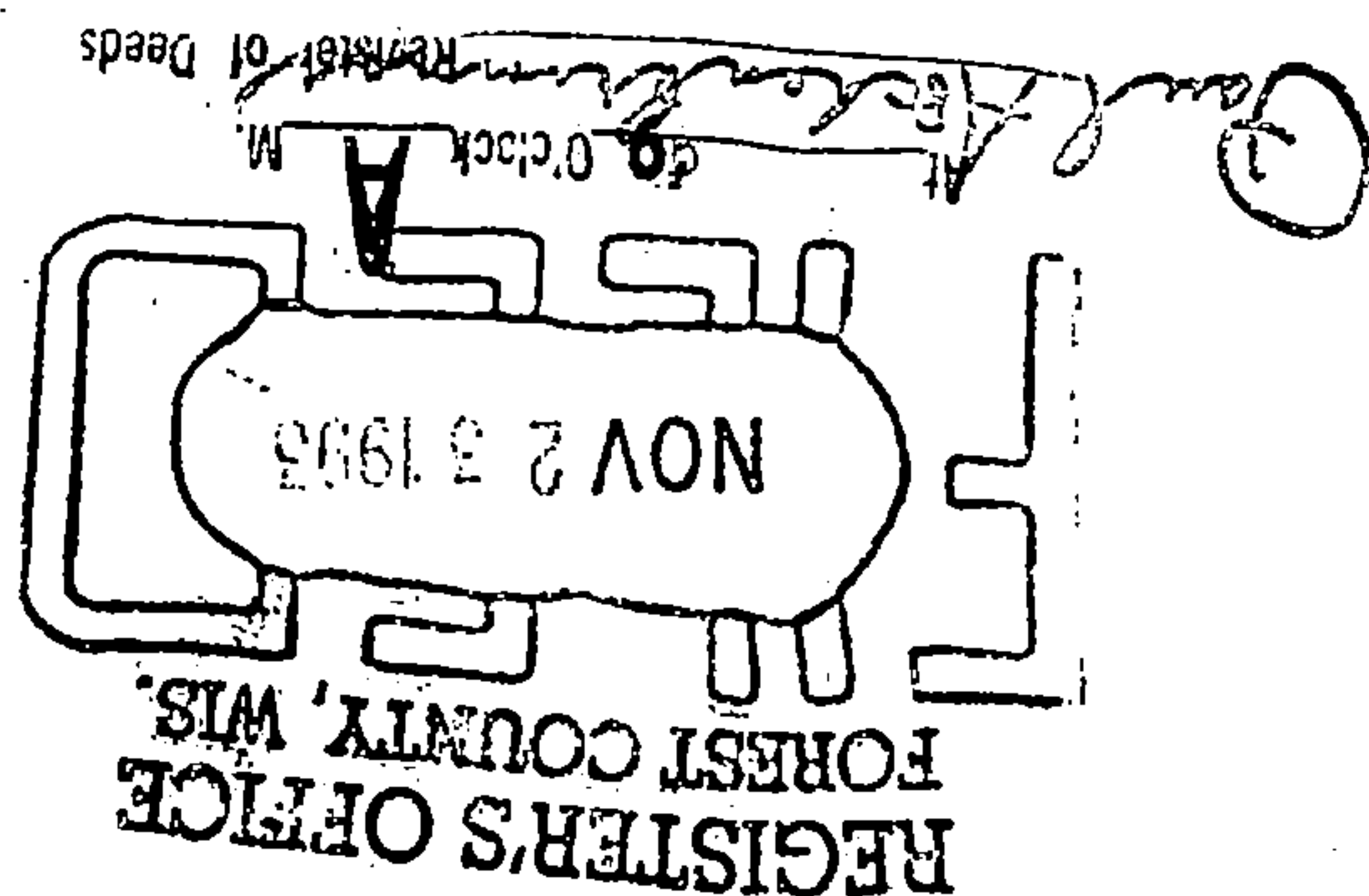


(e) Describe any material discrepancy between the location of the corner as restored or reestablished and the location of that corner as previously restored or reestablished by distance and direction. Show the discrepancy on the plan view drawing under (d), above. Show the distances between the corner as previously restored or reestablished and (1) the corner as restored or reestablished, and (2) to at least 2 of the witness monuments shown on the drawing in (d), above.

(f) Was the corner restored through acceptance of (1) an obliterated evidence location, or, (2) a found perpetuated location?

(2)

(g & h) Was the corner reestablished through lost corner proportionate methods? If so, show the method, including the directions and distances to other public land survey corners used as evidence or used for proportioning in determining the corner location?



(1) I, WAYNE G. DOBBRATZ

(type or print name) certify that the corner location shown on this record was determined by me or under my direction and control and that this U.S. Public Land Survey Monument Record is correct and complete to the best of my knowledge and belief.

Signature

Date

CERTIFICATE READY FOR FILING:

Ralph C. Wells  
Acting District Ranger

Affix Land Surveyor Seal

