

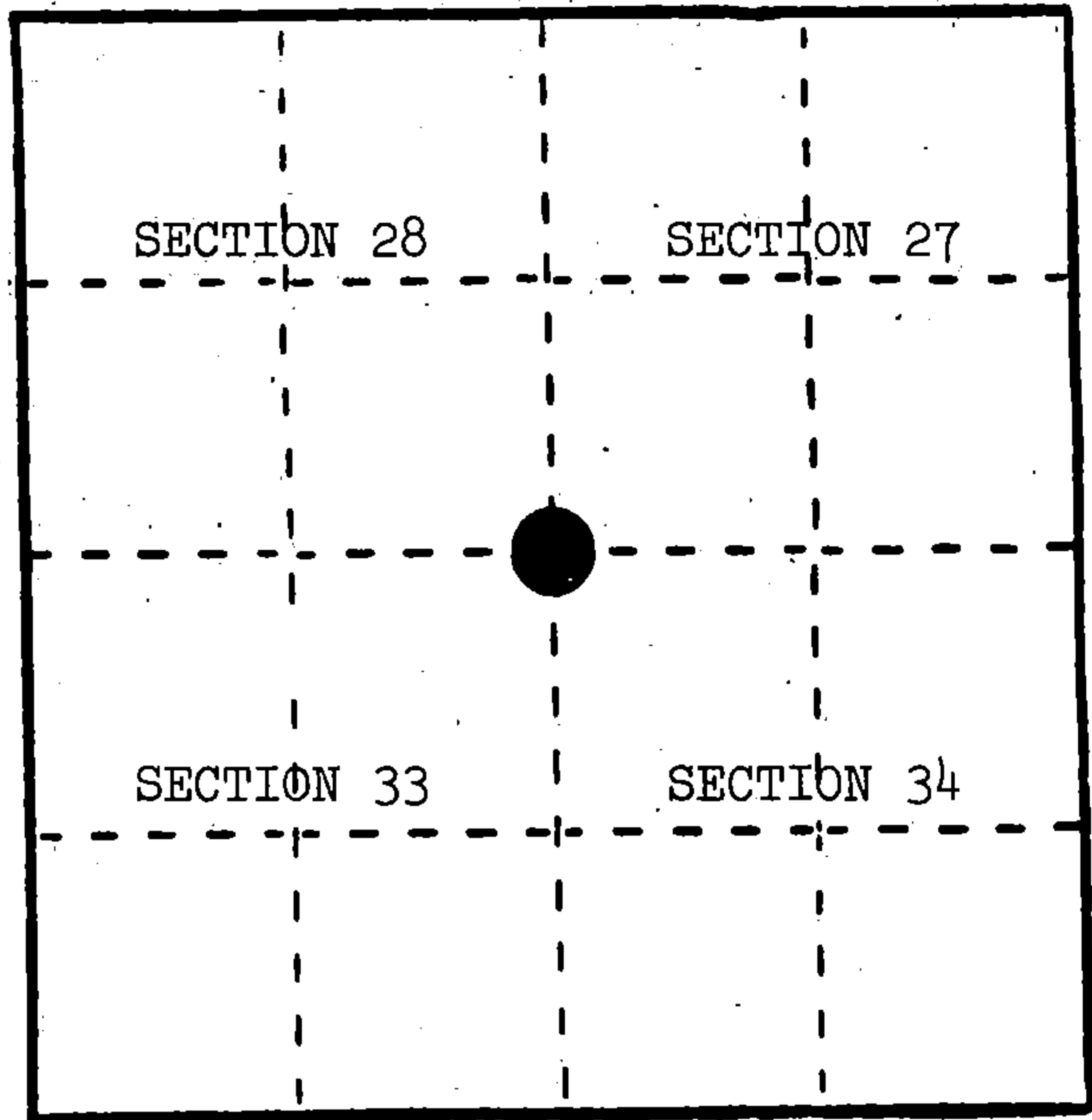
## U. S. PUBLIC LAND SURVEY MONUMENT RECORD

**INSTRUCTIONS:** This record shall show the location of the corner and shall include all of the following nine elements (a through i).

- (a) Identify the corner by reference to the U.S. public land survey system.

○ = Corner monument restored.

Section corner to Sections 27, 28, 33, and 34, T.34N., R.16E.



- (b) Describe any record evidence, monument evidence, occupational evidence, testimonial evidence or any other material evidence you considered, and whether the monument was found or placed.

In 1858, James McBride set wood post with the following BTs: Fir, 8", N.42°W., 11 links; Sugar, 12", N.23°E., 24 links; Hemlock, 8", S.46°E., 29 links; Fir, 10", S.55°W., 47 links.

December 22, 1933, Robert Kolbe found hardwood stake, 24" high. He believed it to be original corner.

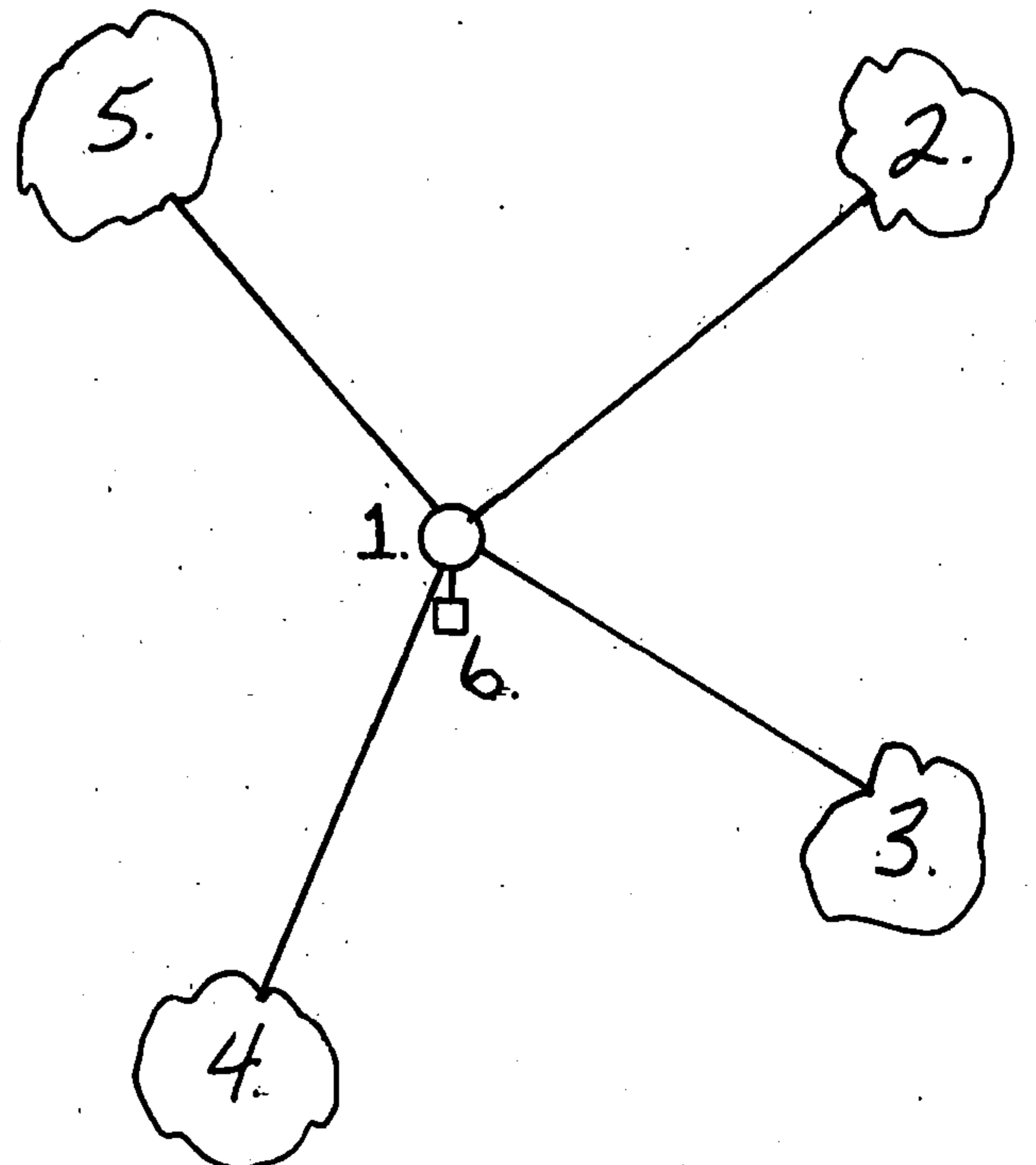
January 30, 1959, Nels Sandberg found 4" x 4" Cedar post (estimated 20 years old), does not believe to be original.

July 25, 1984, Alan Harrison set proportionate position--searched area, found squared wood post, 70', east; root holes (tree burnt out), N.23°E., 15.84'; root holes (Hemlock pieces), S.46°E., 19.14'; no evidence of other BTs.

- (c) In the plan view drawing below, provide reference ties to at least 4 witness monuments, or, if the location is within a municipality, to at least 2 witness monuments. (Witness monuments shall be made of concrete, natural stone, iron or other equally durable material.) Describe witness monuments.

- (d) Show a plan view drawing depicting the relevant monuments and reference ties which is sufficient in detail to enable accurate relocation of the corner monument if the corner monument is disturbed. Indicate north.

1. 2" x 36" aluminum monument stamped to identify the corner; in a mound of stone.
2. Black Ash, 5", N.61°E., 32.36'
3. Black Cherry, 6", S.64°E., 25.74'
4. Yellow Birch, 9", S.21°W., 41.17'
5. Yellow Birch, 5", N.42°W., 38.41'
6. Steel Sign Post, South, 1.62'



REGISTER'S OFFICE }  
Forest County, Wis. }

Received for record this 25th day  
of January, 1985, at

8:30 o'clock A.M. and

recorded in Vol. CORNER RESTORATIONS

on page V-13  
Paul Aschenbrenner  
REGISTER

- (e) Describe any material discrepancy between the location of the corner as restored or reestablished and the location of that corner as previously restored or reestablished by distance and direction. Show the discrepancy on the plan view drawing under (d), above. Show the distances between the corner as previously restored or reestablished and (1) the corner as restored or reestablished, and (2) to at least 2 of the witness monuments shown on the drawing in (d), above.

None.

- (f) Was the corner restored through acceptance of (1) an obliterated evidence location, or, (2) a found perpetuated location?

(2) a found perpetuated location.

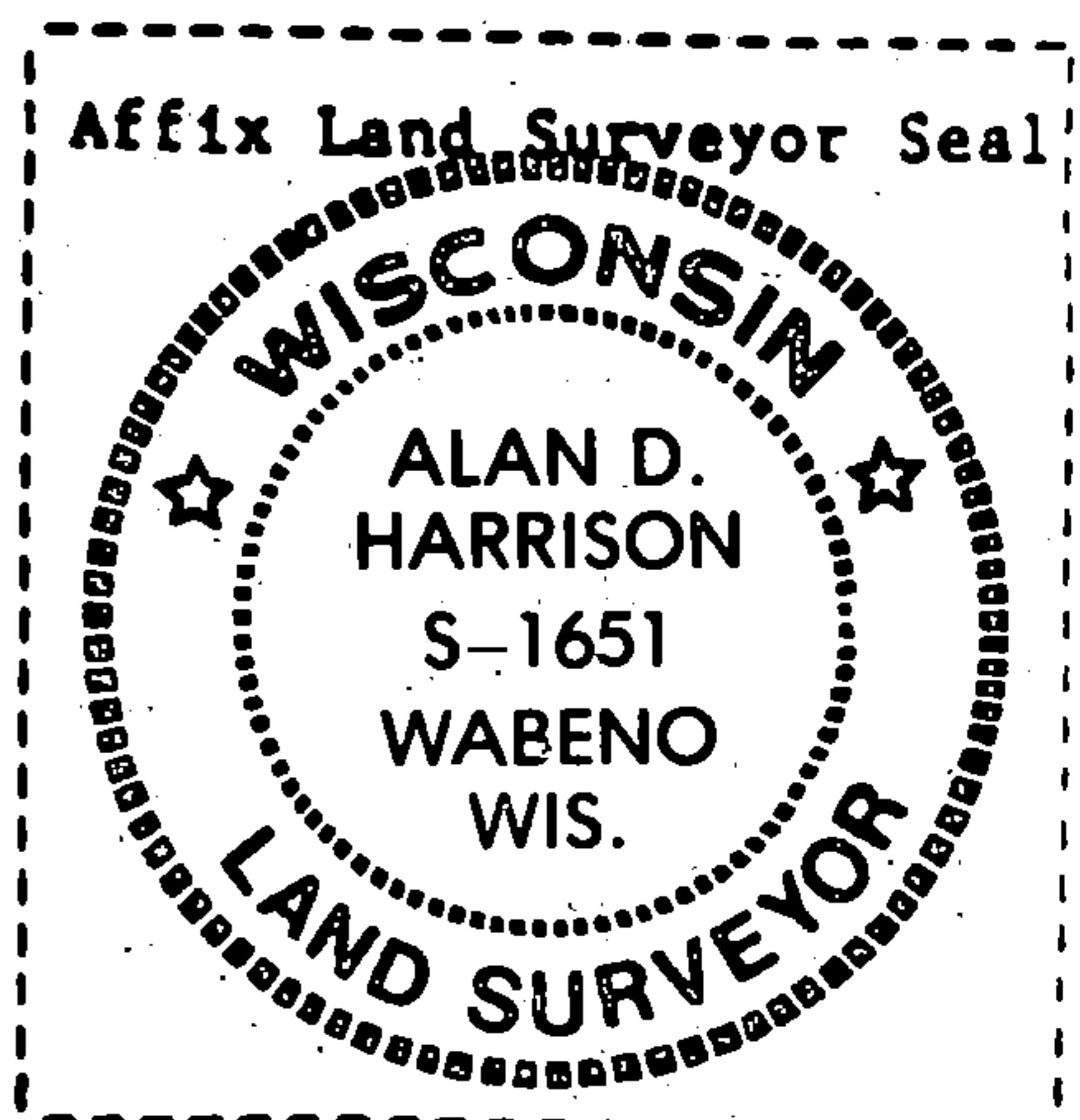
- (g&h) Was the corner reestablished through lost corner proportionate methods? If so, show the method, including the directions and distances to other public land survey corners used as evidence or used for proportioning in determining the corner location?

No.

- (i) I, Alan D. Harrison  
(Type or print name) certify that the corner location shown on this record was determined by me or under my direction and control and that this U.S. Public Land Survey Monument Record is correct and complete to the best of my knowledge and belief.

Alan D. Harrison  
Signature

12/10/84  
Date



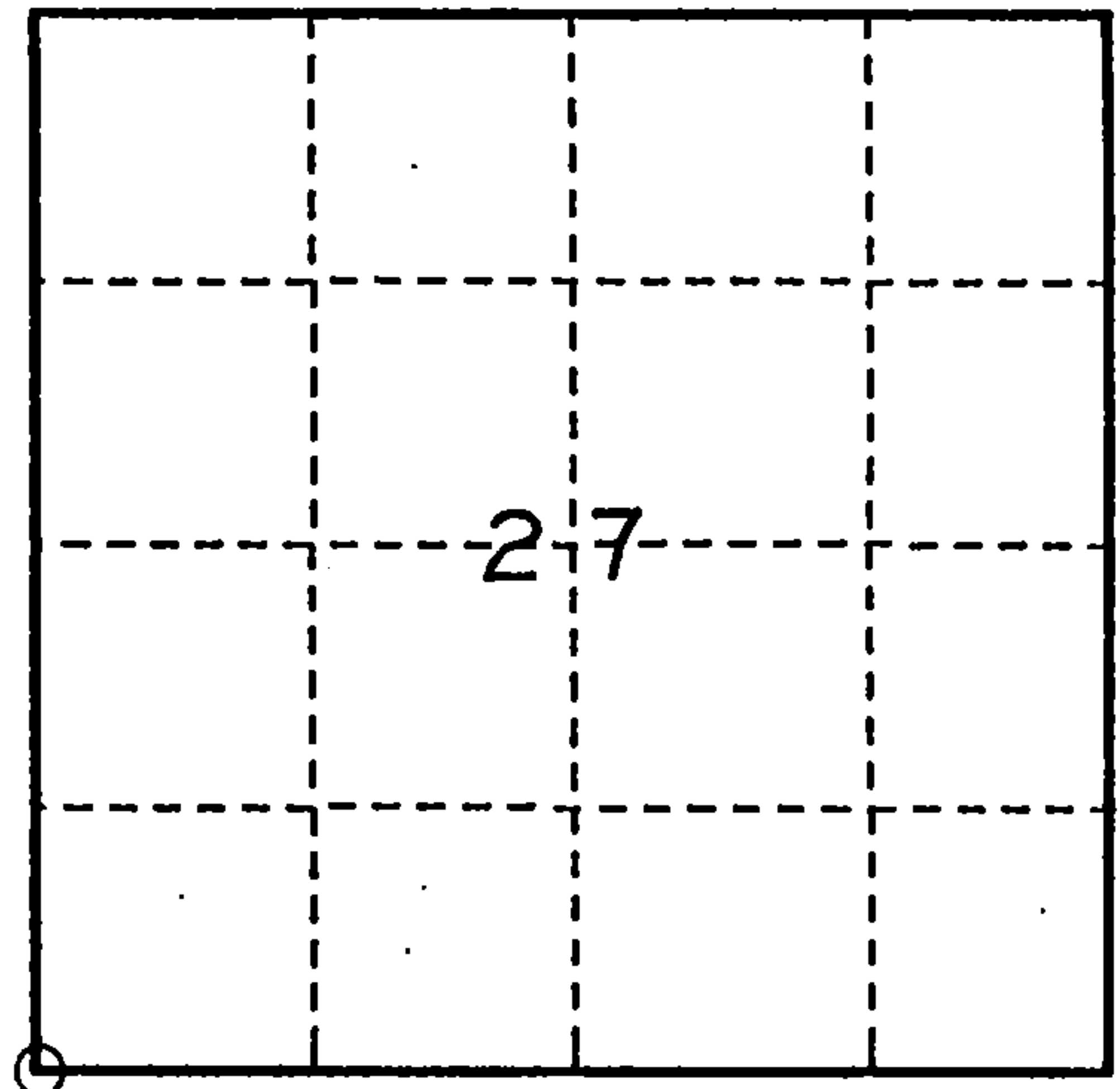
## U. S. PUBLIC LAND SURVEY MONUMENT RECORD

## INSTRUCTIONS:

This record shall show the location of the corner and shall include all of the following nine elements (a through i).

- (a) Identify the corner by reference to the U.S. public land survey system.  
 O = Corner monument restored.

SOUTHWEST CORNER OF SECTION 27, TWP. 34N.,  
 R.16 E.



- (b) Describe any record evidence, monument evidence, occupational evidence, testimonial evidence or any other material evidence you considered, and whether the monument was found or placed.

1858 - ORIGINAL SURVEY BY McBRIDE, SET SECTION CORNER, B.Ts - FIR 8" N42°W. 11 LKS., SUGAR 12" N.23°E. 24 LKS., HEMLOCK 8" S.46°E. 29 LKS. FIR 10" S.55°W. 47 LKS.

1933 - KOLBE FOUND HARDWOOD STAKE BELIEVED TO BE ORIGINAL CORNER

1959 - SANDBERG FOUND 4" X4" CEDAR POST, NOT ORIGINAL

1984 - HARRISON R.L.S. NO. 1651, SET 2" DIA. ALUMINUM MONUMENT AT CORNER, B.Ts - BLACK ASH 5" N.61°E. 32.36FT., BLACK CHERRY 6" S.64°E. 25.74FT., YELLOW BIRCH 6" S.21°W. 41.17FT., YELLOW BIRCH 5" N.42°W. 38.41FT., WITNESS - STEEL SIGN POST SOUTH 1.62FT.

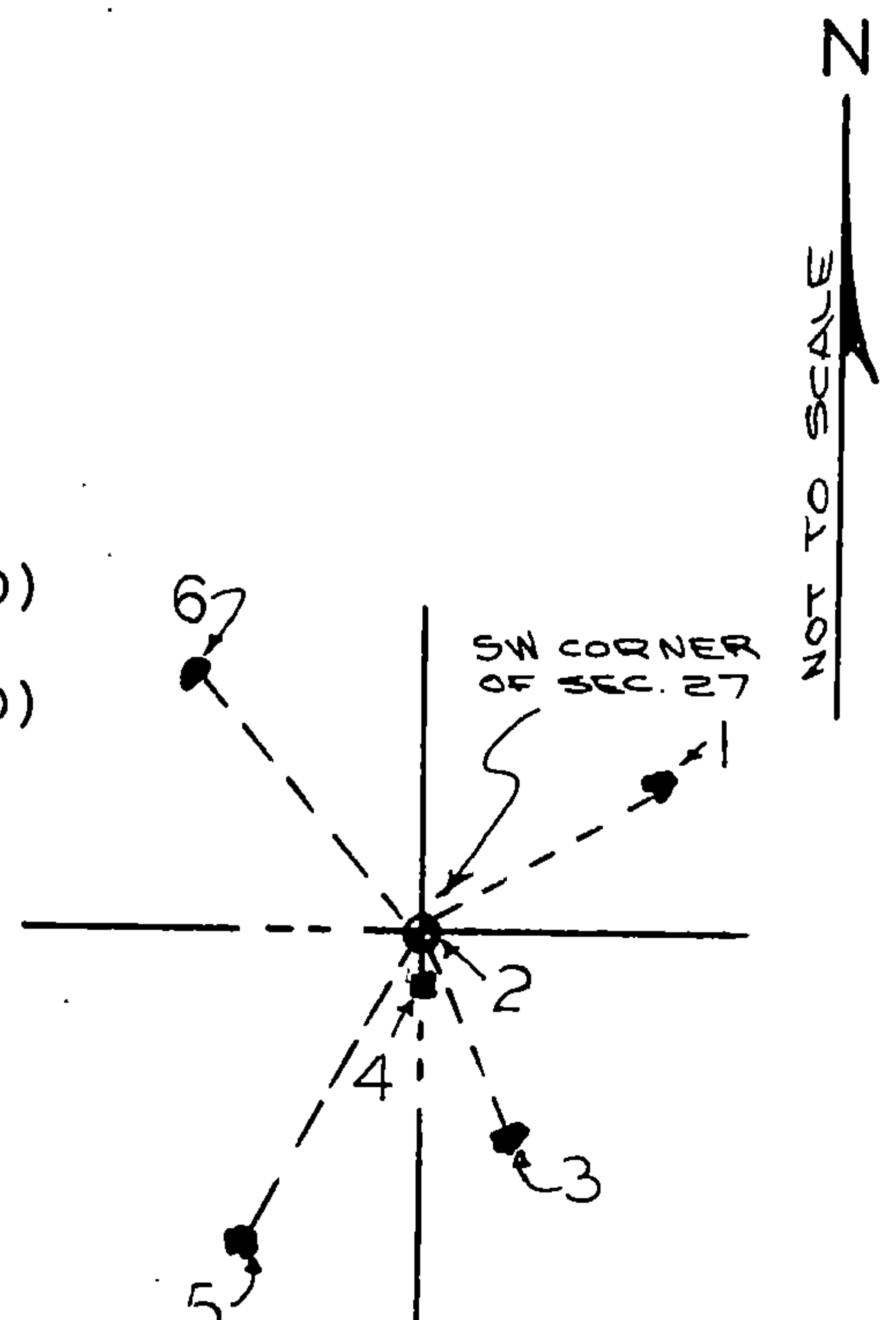
1993 - DOBBRATZ R.L.S. NO.S-973, FOUND MONUMENT, STEEL SIGN POST AND B.Ts, EXCEPT 2 B.Ts HAVE INCORRECT BEARINGS.

- (c) In the plan view drawing below, provide reference ties to at least 4 witness monuments, or, if the location is within a municipality, to at least 2 witness monuments. (witness monuments shall be made of concrete, natural stone, iron or other equally durable material.)

- (d) Show a plan view drawing depicting the relevant monuments and reference ties which is sufficient in detail to enable accurate relocation of the corner monument if the corner monument is disturbed. Indicate north.

## WITNESS

1. B.T BLACK ASH 6" N.61°E. 32.36FT. (EXISTING)
2. 2" DIA. ALUMINUM MONUMENT AT CORNER (EXISTING)
3. B.T. BLACK CHERRY 7" S.22°E. 25.62FT. (CORRECTED)
4. STEEL SIGN POST SOUTH 1.62FT. (EXISTING)
5. B.T. YELLOW BIRCH 10" S.30°W. 41.15FT.(CORRECTED)
6. B.T. YELLOW BIRCH 6" N.42°W. 38.45FT. (EXISTING)



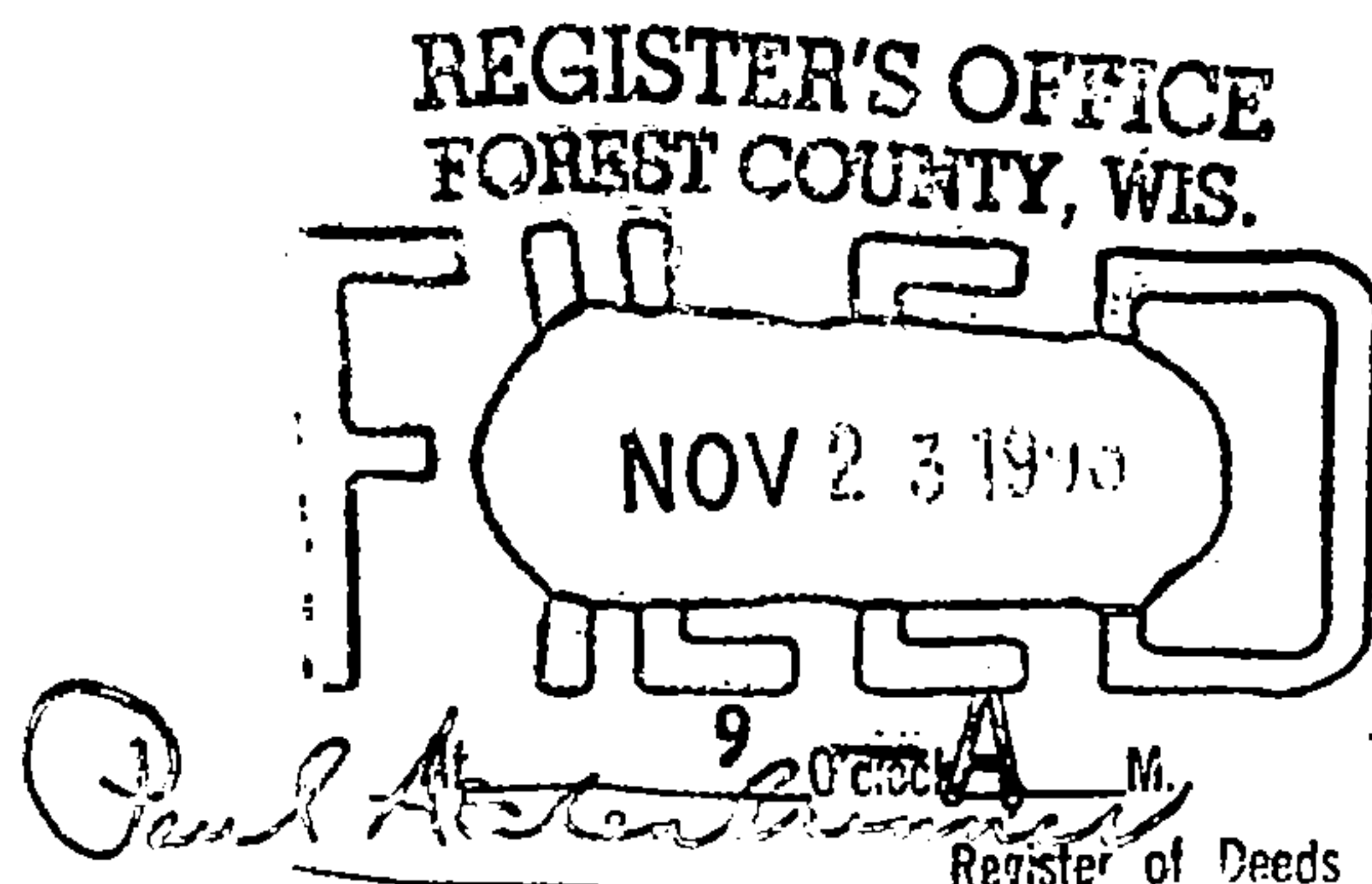
43416280000

(e) Describe any material discrepancy between the location of the corner as restored or reestablished and the location of that corner as previously restored or reestablished by distance and direction. Show the discrepancy on the plan view drawing under (d), above. Show the distances between the corner as previously restored or reestablished and (1) the corner as restored or reestablished, and (2) to at least 2 of the witness monuments shown on the drawing in (d), above.

(f) Was the corner restored through acceptance of (1) an obliterated evidence location, or, (2) a found perpetuated location?

(2)

(g & h) Was the corner reestablished through lost corner proportionate methods? If so, show the method, including the directions and distances to other public land survey corners used as evidence or used for proportioning in determining the corner location?



(1) I, WAYNE G. DOBBRATZ

(type or print name) certify that the corner location shown on this record was determined by me or under my direction and control and that this U.S. Public Land Survey Monument Record is correct and complete to the best of my knowledge and belief.

Signature

8/10/93

Date

CERTIFICATE READY FOR FILING:

Ralph [Signature] 11-5-93  
Acting District Ranger

