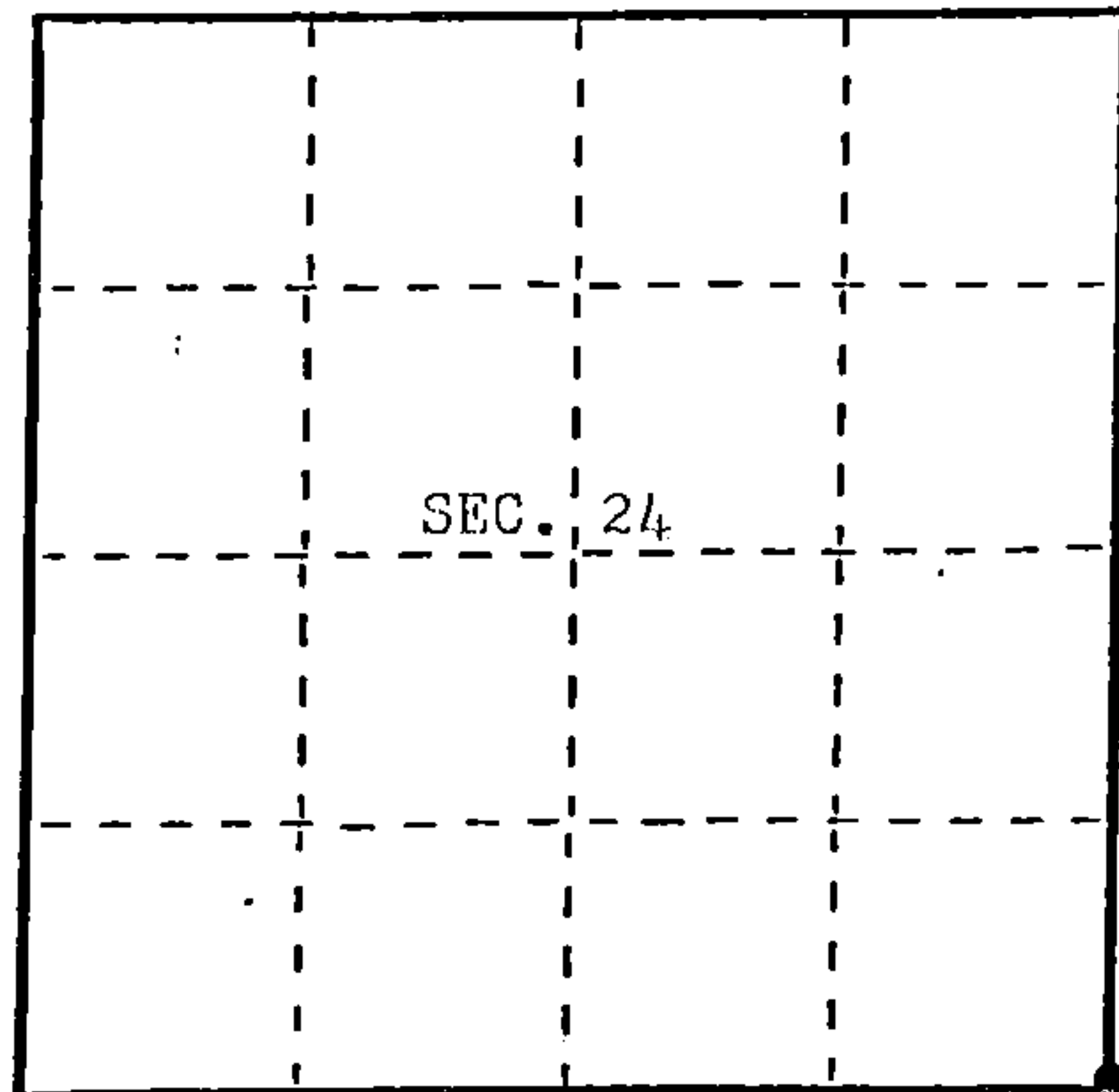


State of Wisconsin }
County of Oneida } ss.

I, James L. Will, do hereby
certify that on the 15th day
of October, 1985, I found
evidence of the Southeast Section
corner of Section 24
Township 35, North, Range
11 East, Fourth Principal Meridian,
as described hereon; and that from this evidence
I established a new monument and accessories
as described hereon to perpetuate the original
location of this corner.

Resident witnesses:

Michael E. Weber



● = Corner monument restored.

U. S. Public Land Survey Monument Record

Index No. B-1

History of original corner establishment:

Original corner was established during the course of the Range Line of
T 35 N, R 11 & 12 E, which was established in 1858 by Alfred Millard,
Deputy Surveyor.

Original B.T.'s:

14"	Y. Birch	N 35° W	49 lks.	20"	Aspen	S 20° E	15 lks.
12"	Maple	N 16° E	37 lks.	12"	Y. Pine	S 80° W	44 lks.

Description of corner evidence found:

None.

Description of monument and accessories I established to perpetuate the original location of this corner.

Set 1" iron pipe on the Range Line by single proportion between the quarter
corners to the north and south. Corner is 3.3' east of the center line of
Co. Hwy. "M" and in line with a fenceline to the west.

Blazed and scribed the following new bearing trees:

5" Hemlock N 51° W 52.83' (Measurements are to a nail in the side
7" Cedar S 66° W 52.94' of the trees.)

Set 4-1" iron pipe references to the corner:

N 32°-37'-40" E	41.53'	N 35°-51'-30" W	62.86'
S 32°-37'-40" W	48.80'	S 35°-51'-30" E	34.89'

Dated at Eagle River Wis., this 23rd day of October, 1985.

Signature James L. Will Title Registered Land Surveyor Registration No. S-1410
(County Surveyor, Registered Land Surveyor, or other duly authorized official)

Office of Register of Deeds, County of Oneida I hereby certify that the within
instrument was filed in this office for record on the June day of 1986
at 1:05 o'clock A M.

Doris Verage Fiedner
(Register of Deeds)

By Cynthia A. Pitzer Deputy

43511240000

Describe any material discrepancy between the location of the corner as restored or reestablished and the location of that corner as previously restored or reestablished by distance and direction. Show the discrepancy on the plan view drawing under (d), above. Show the distances between the corner as previously restored or reestablished and (1) the corner as restored or reestablished, and (2) to at least 2 of the witness monuments shown on the drawing in (d), above.

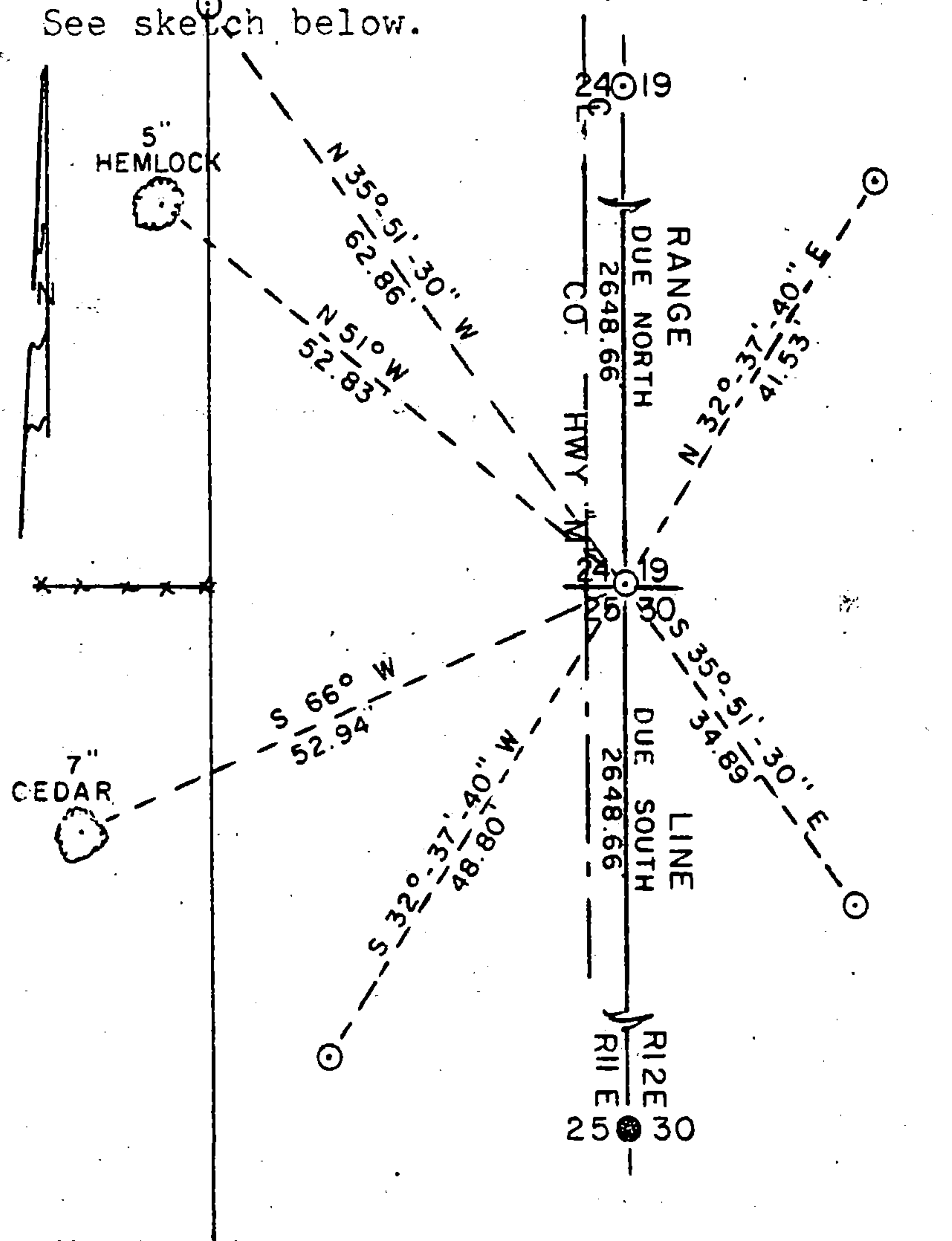
None. See sketch below.

Was the corner restored through acceptance of (1) an obliterated evidence location, or, (2) a found perpetuated location?

Corner was restored by single proportion on the Range Line between the quarter corners to the north and south.

Was the corner reestablished through lost corner proportionate methods? If so, show the method, including the directions and distances to other public land survey corners used as evidence or used for proportioning in determining the corner location?

See sketch below.



— LEGEND —

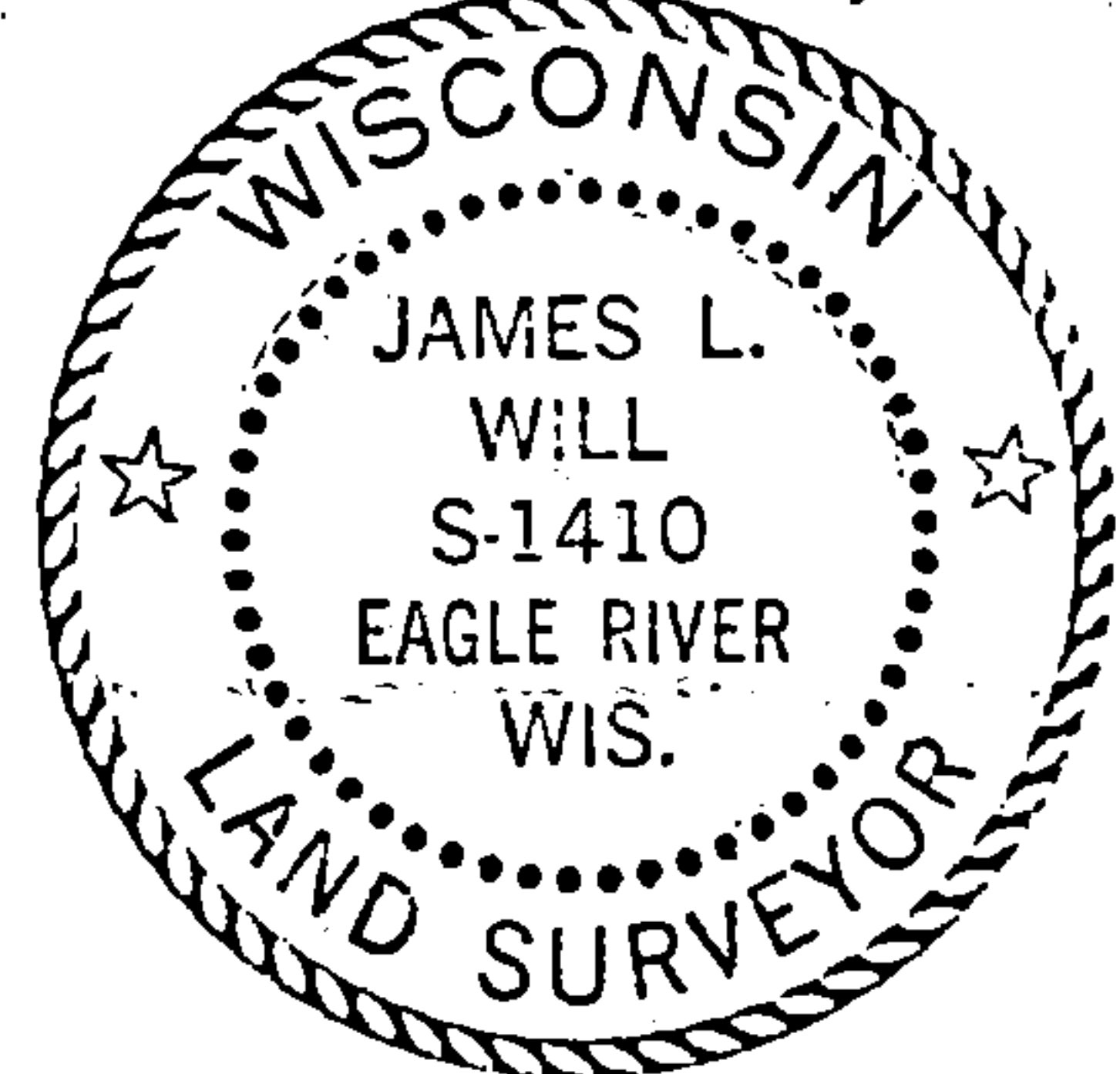
SCALE : 1" = 20'

● 1-1/2" IRON PIPE IN PLACE

○ 1" IRON PIPE SET

*** FENCELINE

Affix Land Surveyor Seal



I, James L. Will, R.L.S. #1410
(type or print name) certify that the corner location shown on this record was determined by me or under my direction and control and that this U.S. Public Land Survey Monument Record is correct and complete to the best of my knowledge and belief.

James L. Will
Signature

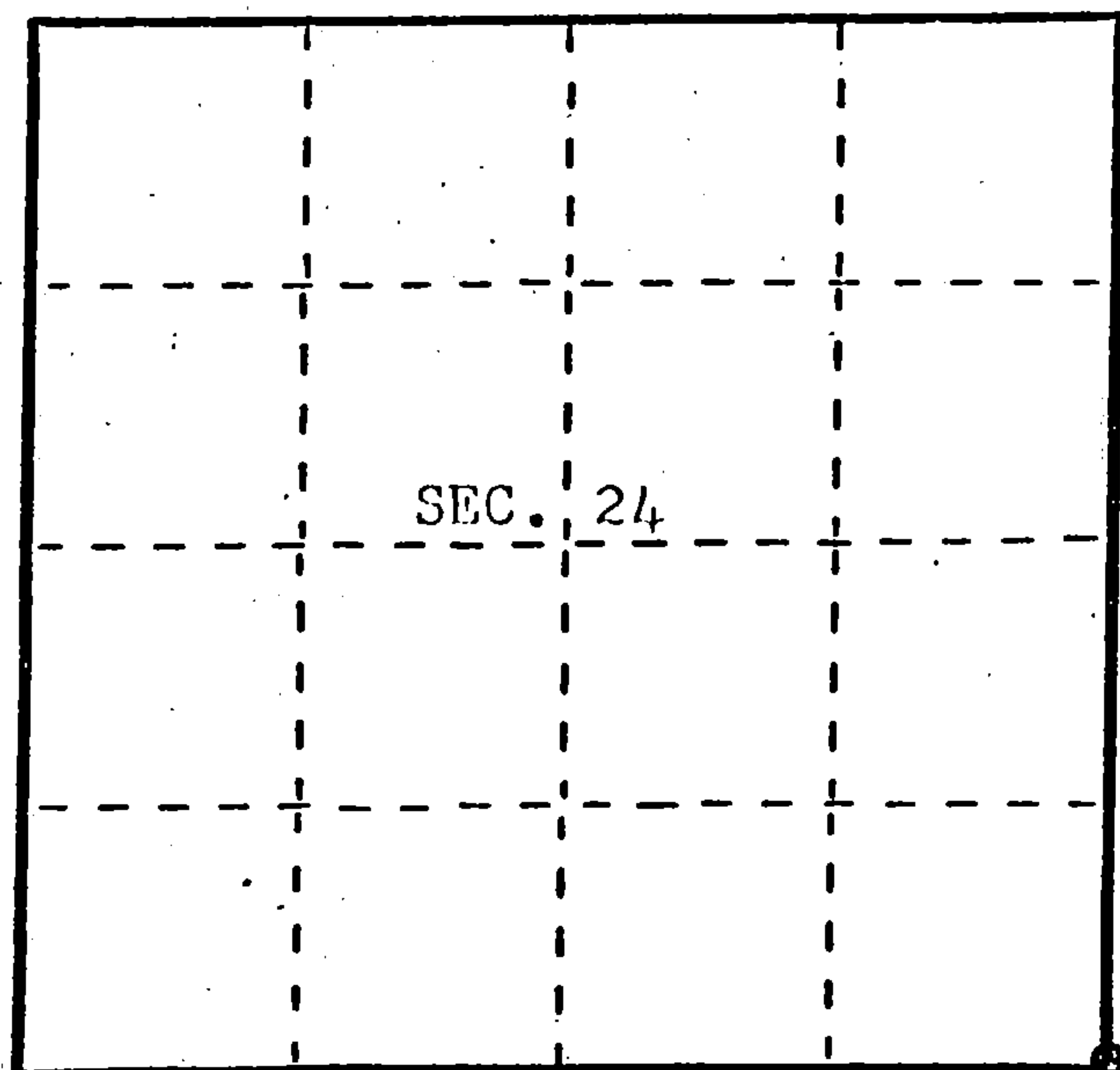
October 23, 1985
Date

State of Wisconsin }
County of Oneida } ss.

I, James L. Will, do hereby
certify that on the 15th day
of October, 1985, I found
evidence of the Southeast Section
corner of Section 24
Township 35, North, Range
11 East, Fourth Principal Meridian,
as described hereon; and that from this evidence
I established a new monument and accessories
as described hereon to perpetuate the original
location of this corner.

Resident witnesses:

Michael E. Weber



● = Corner monument restored.

U. S. Public Land Survey Monument Record

Index No. R-1

History of original corner establishment:

Original corner was established during the course of the Range Line of
T 35 N, R 11 & 12 E, which was established in 1858 by Alfred Millard,
Deputy Surveyor.

Original B.T.'s:

14"	Y. Birch	N 35° W	49 lks.	20"	Aspen	S 20° E	15 lks.
12"	Maple	N 16° E	37 lks.	12"	Y. Pine	S 80° W	44 lks.

Description of corner evidence found:

None.

Description of monument and accessories I established to perpetuate the original location of this corner.

Set 1" iron pipe on the Range Line by single proportion between the quarter
corners to the north and south. Corner is 3.3' east of the center line of
Co. Hwy. "M" and in line with a fenceline to the west.

Blazed and scribed the following new bearing trees:

5" Hemlock N 51° W 52.83' (Measurements are to a nail in the side
7" Cedar S 66° W 52.94' of the trees.)

Set 4-1" iron pipe references to the corner:

N 32°-37'-40" E	41.53'	N 35°-51'-30" W	62.86'
S 32°-37'-40" W	48.80'	S 35°-51'-30" E	34.89'

Dated at Eagle River Wis., this 23rd day of October, 1985.

Signature James L. Will Title Registered Land Surveyor Registration No. S-1410
(County Surveyor, Registered Land Surveyor, or other duly authorized official)

Office of Register of Deeds, County of Oneida I hereby certify that the within
instrument was filed in this office for record on the 1st day of June, 1986
at 1:05 o'clock P. M.

Doris V. Hage (Register of Deeds)
By Cynthia A. Pitts Deputy

Describe any material discrepancy between the location of the corner as restored or reestablished and the location of that corner as previously restored or reestablished by distance and direction. Show the discrepancy on the plan view drawing under (d), above. Show the distances between the corner as previously restored or reestablished and (1) the corner as restored or reestablished, and (2) to at least 2 of the witness monuments shown on the drawing in (d), above.

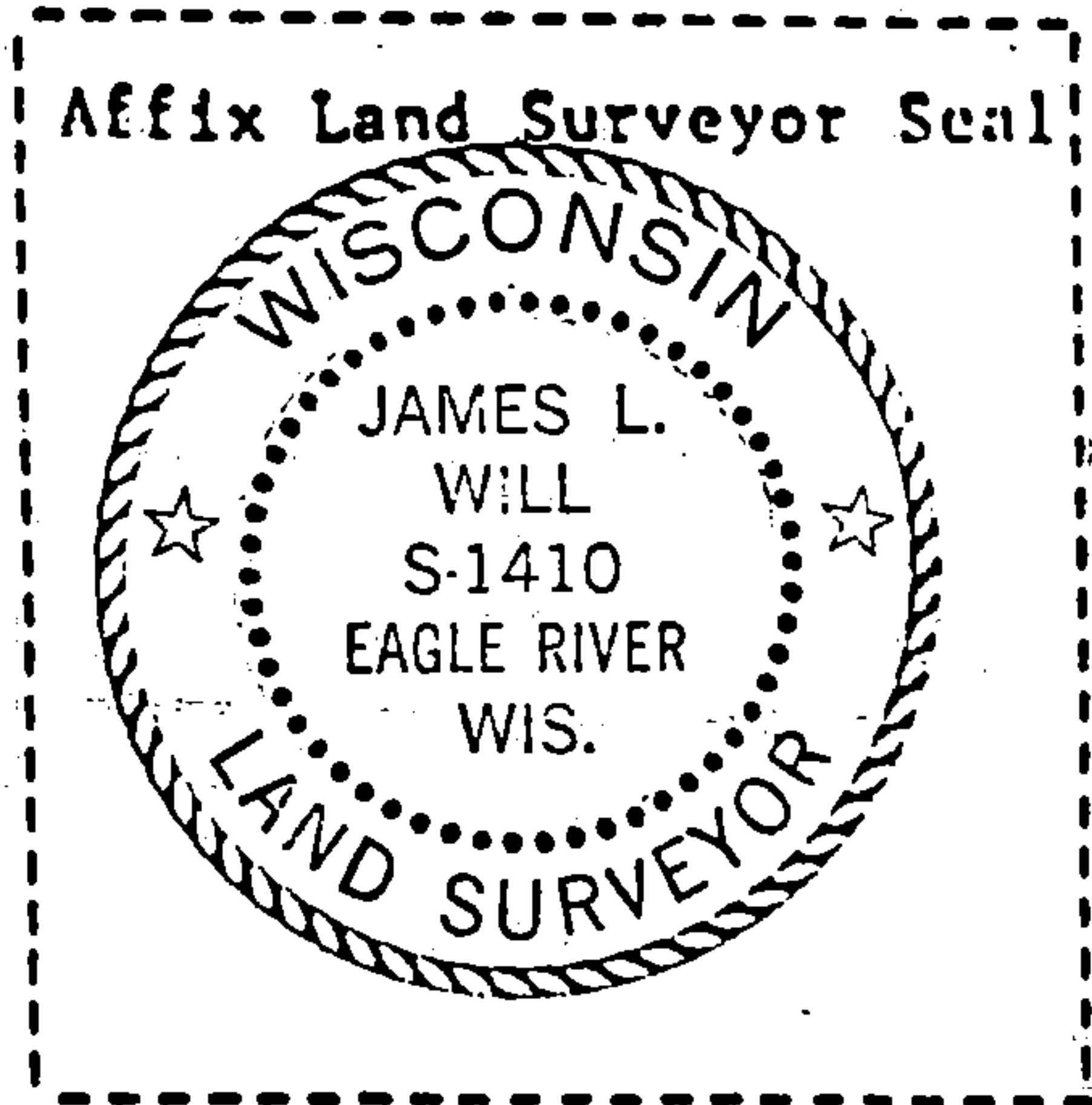
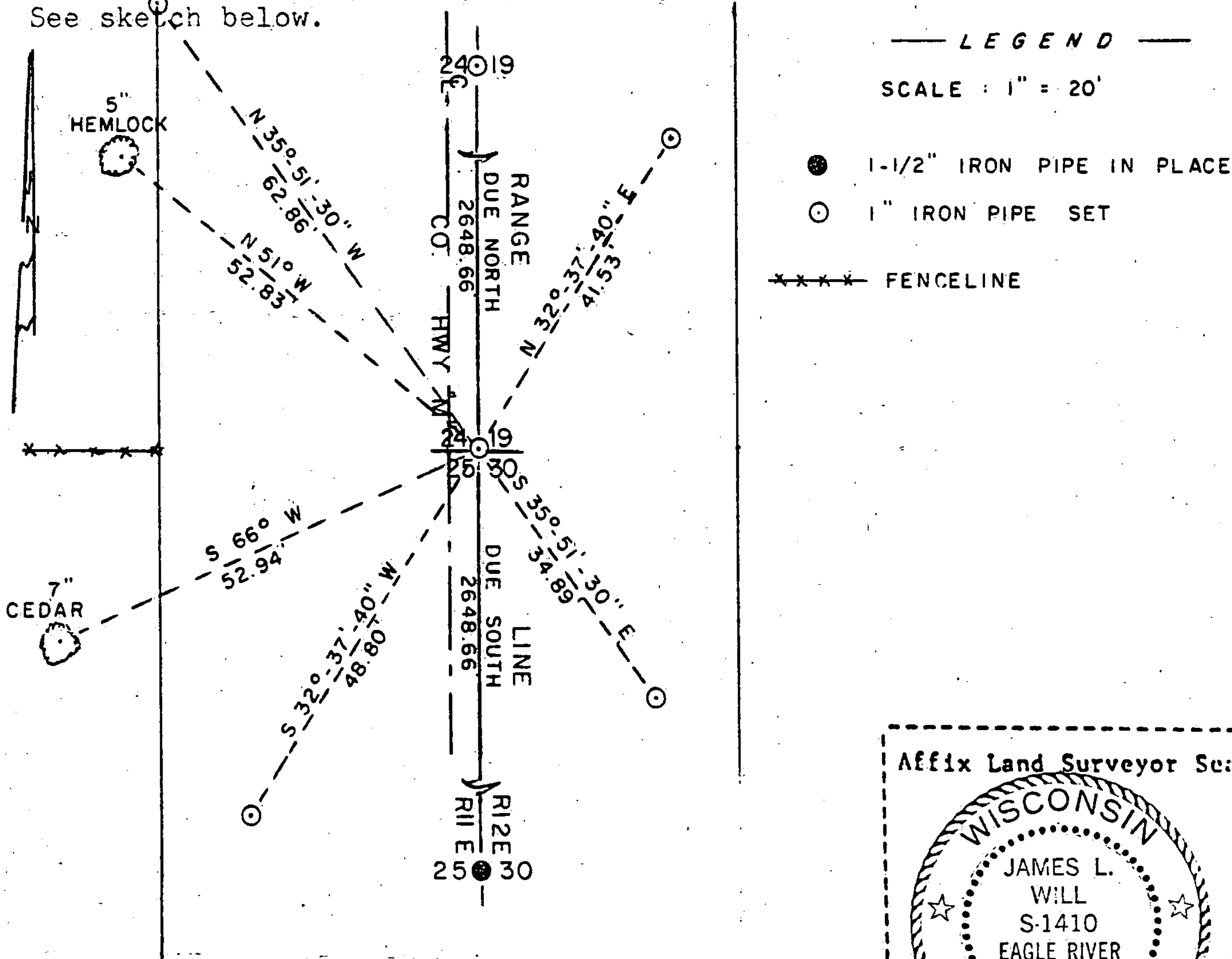
None. See sketch below.

Was the corner restored through acceptance of (1) an obliterated evidence location, or, (2) a found perpetuated location?

Corner was restored by single proportion on the Range Line between the quarter corners to the north and south.

Was the corner reestablished through lost corner proportionate methods? If so, show the method, including the directions and distances to other public land survey corners used as evidence or used for proportioning in determining the corner location?

See sketch below.



I, James L. Will, R.L.S. #1410
 (type or print name) certify that the corner location shown on this record was determined by me or under my direction and control and that this U.S. Public Land Survey Monument Record is correct and complete to the best of my knowledge and belief.

James L. Will
 Signature

October 23, 1985
 Date