

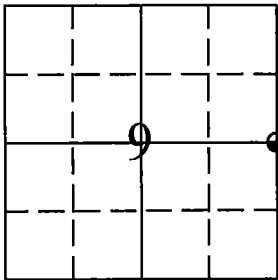
U.S. PUBLIC LAND SURVEY MONUMENTATION RECORD

(AS REQUIRED BY S. A-E 7.08, WI ADM. CODE)

CORNER: E 1/4 INDEX NUMBER: G-13  
SECTION: 9 TOWNSHIP: 35N RANGE: 12E  
TOWN/CITY/VILLAGE: TOWN OF NASHVILLE  
COUNTY: FOREST STATE: WISCONSIN

History of original corner establishment and subsequent restorations and description of any record, monument, occupational, testimonial, or other evidence considered:

1865: James L. Nowlin Set Corner Post  
20" Birch S30°E 22 links (14.52 feet)  
12" Birch N65°W 30 links (19.80 feet)



● = CORNER LOCATION

Forest County Coordinates

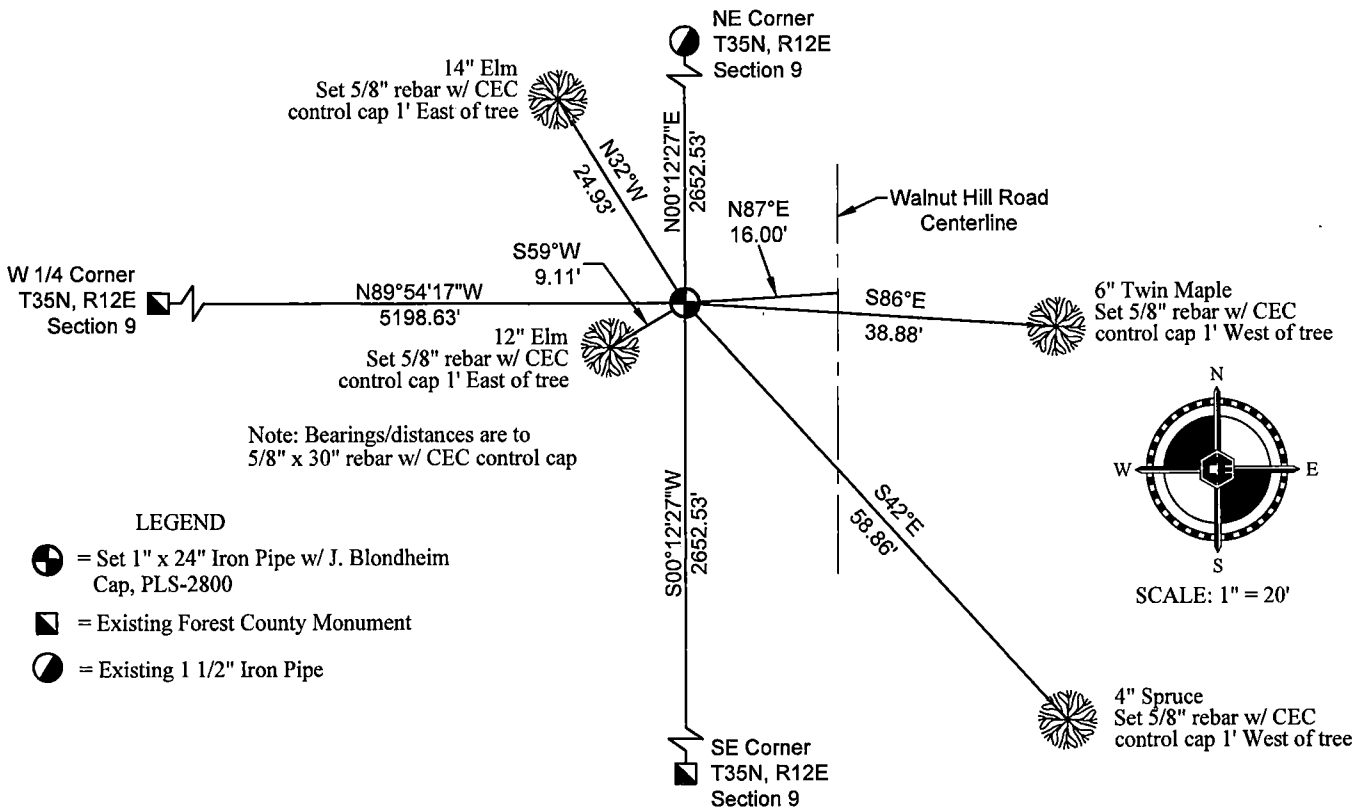
(US Survey Feet)

N: 556117.30'

E: 815229.53'

CORNER WAS: (CHECK ALL THAT APPLY)

- ☐ Restored through acceptance of an obliterated location ☐ Restored through acceptance of a found perpetuated location  
☐ Restored or reestablished in a location that differs from a previous restoration or reestablishment (include a plan view drawing and indicate what was set and/or found) ☒ Considered a lost corner and reestablished through lost corner proportionate methods (include a plan view drawing showing distances and directions to other public land survey corners used for proportioning and determining the corner location)

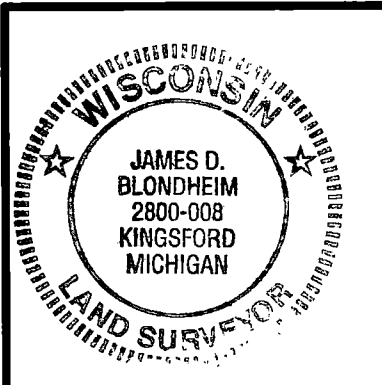


DESCRIBE THE MONUMENT AND ACCESSORIES USED TO PERPETUATE THE LOCATION OF THIS CORNER.  
(Include a plan view drawing and indicate what was set and/or found)

2024: James D. Blondheim PLS S-2800  
Research for corner showed that GLO records were the last information of record for this corner. Field search was unable to locate any remains of GLO witnesses. Given no evidence, the corner was calculated by means of single proportionate measurement between the NW corner and NE corners of Section 15, falling midway and on line between the two corners. Calculated position is accepted as a careful and faithful reestablishment of the position of the original corner and 1" x 24" Iron Pipe w/ J. Blondheim cap, PLS-2800 set.

Set the following witnesses:  
14" Elm N32°W 24.93 feet (set 5/8" rebar w/ CEC control cap 1 foot East of tree)  
6" Twin Maple S86°E 38.88 feet (set 5/8" rebar w/ CEC control cap 1 foot West of tree)  
4" Spruce S42°E 58.86 feet (set 5/8" rebar w/ CEC control cap 1 foot West of tree)  
12" Elm S59°W 9.11 feet (set 5/8" rebar w/ CEC control cap 1 foot East of tree)

SIGNATURE: [Signature] DATE: 10/7/2024



I, JAMES D. BLONDHEIM, P.L.S. S-2800, certify that the corner location shown on this above record was determined by me or under my direction and control and that this U.S. Public Land Survey Monument Record is correct and complete to the best of my knowledge and belief.

COLEMAN ENGINEERING COMPANY  
IRON MOUNTAIN • IRONWOOD • GREEN BAY  
885 Circle Drive, Iron Mountain, Michigan  
www.coleman-engineering.com

DRAWN: DJA FB #552, PG: 36 DATE: 10/7/2024 JOB NO. 240840

43512092000

G-13