

NOV 08 2023

CORTNEY BRITTEN CLEEREMAN  
REGISTER OF DEEDS

241589

U S PUBLIC LAND SURVEY MONUMENT RECORD

NOTE: This form is intended and designed to fulfill all requirements of Wisconsin Administrative Code, Chapter A-E 7.08 U.S. Public Land Survey Monument Record (3) (a-i)

A-E 7.08(3)(a) Identity of corner:  
SOUTH 1/4 CORNER SECTION 11,  
TOWNSHIP 35 NORTH,  
RANGE 12 EAST OF THE 4TH PM,  
TOWN OF NASHVILLE,  
COUNTY OF FOREST

WISCORS - FOREST COUNTY  
N: 553,491.475 USft (XXX,XXX.XXX)  
E: 822,994.731 USft (XXX,XXX.XXX)  
Datum: NAD83 (2011)  
GNSS Method RTK  
GNSS Control WISCORS VRS



The coordinate value shown has been verified by the average of two or more GPS observations at a markedly different time. Coordinates shown in parenthesis are previously published values.

A-E 7.08(3)(b)

Original Surveyor: James L. Nowlin

Date of Original Survey    Commenced:    June 26, 1865  
Completed:    July 7, 1865

Original Accessories:  
Hemlock    12    S 8° E    20 Links  
W. Pine    15    N 5° W    30 Links

See previous Certified Land Corner Restoration - J 19 - September 28, 1983 - Surveyor 1682 - Glen Barker - THENCE:

May 6, 1999 - Surveyor 1795 - Devon J. Vanden Heuvel - indicates this position as "existing county monument" on Forest Co. Surveyor File #351211-19990506.

November 29, 2000 - Surveyor 1795 - Devon J. Vanden Heuvel - indicates this position as "existing county monument" on Forest Co. Surveyor File #351211-19990506.

June 19 & 20, 2001 - Surveyor 1451 - Eugene C. Uttech - indicates this position as "found 2" alu monument" on Forest Co. Surveyor File #351214-20010620.

October 18, 2014 - Surveyor 809-8 - Michael S. Hess - indicates this position as "existing 2" aluminum pipe monument" on Forest Co. Surveyor File #351211-20141018.

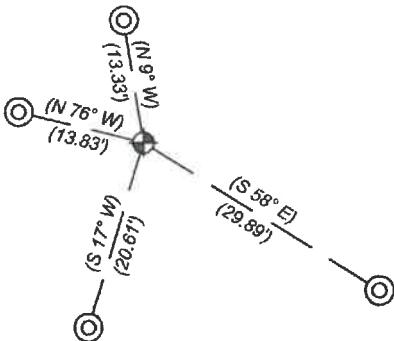
February 22, 2016 - Surveyor 2439 - Charles L. Oleinik - indicates this position as "found Forest County monument" on Forest Co. Surveyor File #351214-20160222.

March 14, 2016 - Surveyor 2439 - Charles L. Oleinik - indicates this position as "found Forest County monument" on Forest Co. Surveyor File #351214-20160314.

August 02, 2023 - I found a Forest County aluminum monument, being a 2.5" diameter aluminum pipe with a 3.3" diameter aluminum cap stamped to identify the corner. The monument extends ±8" above grade. I also found all of Glen Barkers reference monuments as shown below. I did not establish any new reference monuments.

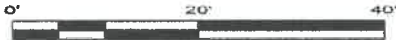
A-E 7.08(3)(c)(d) Plan view of corner with references to at least 4 witness monuments.

BEARINGS LISTED TO THE NEAREST  
SECOND ARE REFERENCED TO WISCONSIN  
COUNTY COORDINATE REFERENCE  
SYSTEM - FOREST COUNTY ZONE.  
ALL OTHER BEARINGS ARE MAGNETIC.



LEGEND

- ⊕ This Corner
- 1" diameter iron pipe, found



A-E 7.08(3)(e) 1865 Surveyor set a post, 1983 Surveyor set a 2-1/2" A-1 aluminum Forest County monument, subsequent surveyors found the same, as did I in 2023.

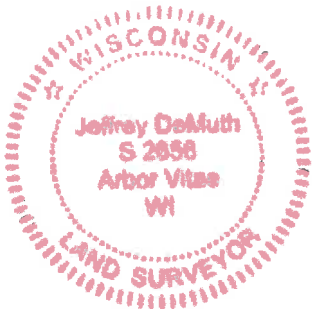
A-E 7.08(3)(f) I accept this monument as a FOUND PERPETUATED LOCATION of the corner.  
A-E 7.08(3)(g)(h) This corner was not determined through lost-corner-proportionate methods.

A-E 7.08(3)(i) I, Jeffrey L. DeMuth, Professional Land Surveyor No. S-2656, hereby certify that the corner location on this record was determined by me or under my direction and control, and that this U.S. Public Land Survey Monument Record is correct and complete to the best of my knowledge, and belief.

SIGNATURE

September 14, 2023

DATE



43512110020

J 19



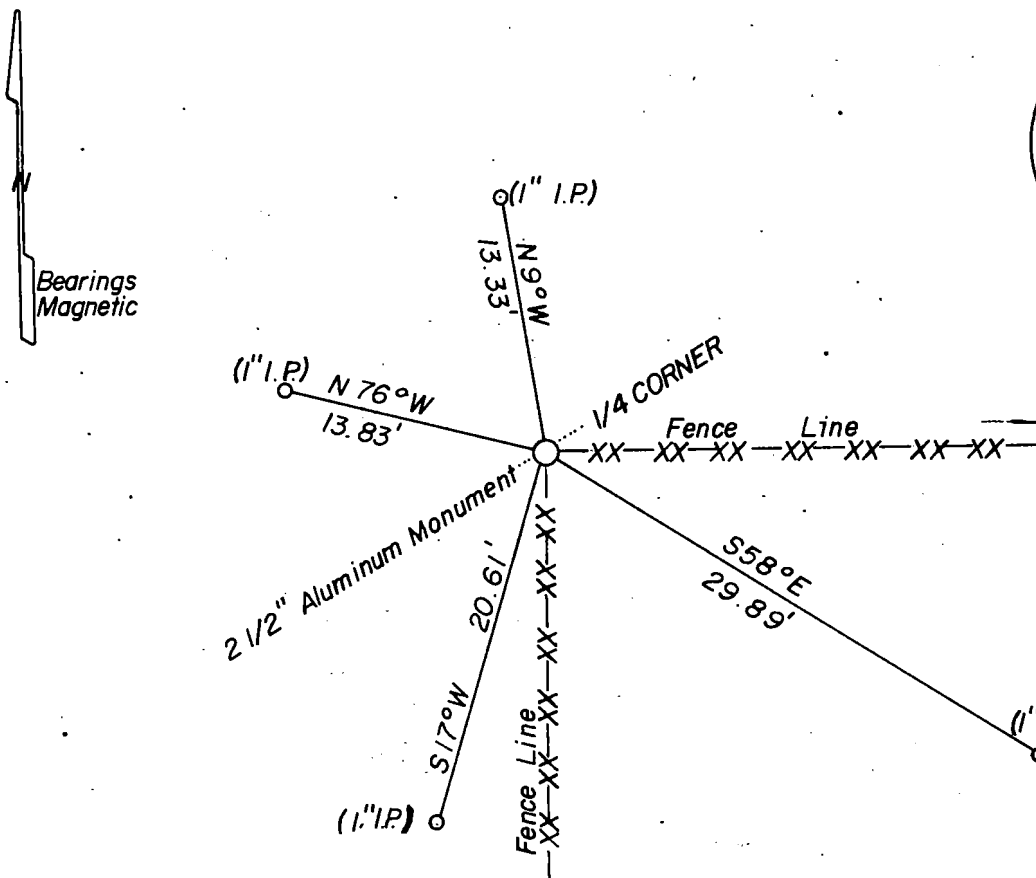
- (d) Describe any material discrepancy between the location of the corner as restored or reestablished and the location of that corner as previously restored or reestablished by distance and direction. Show the discrepancy on the plan view drawing under (d), above. Show the distances between the corner as previously restored or reestablished and (1) the corner as restored or reestablished, and (2) to at least 2 of the witness monuments shown on the drawing in (d), above.

See drawing below.

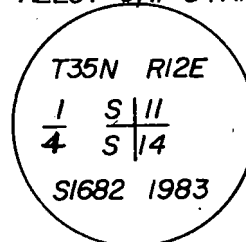
- (f) Was the corner restored through acceptance of (1) an obliterated evidence location, or, (2) a found perpetuated location?

Corner was established through acceptance of found perpetuated location as described on reverse side of this form.

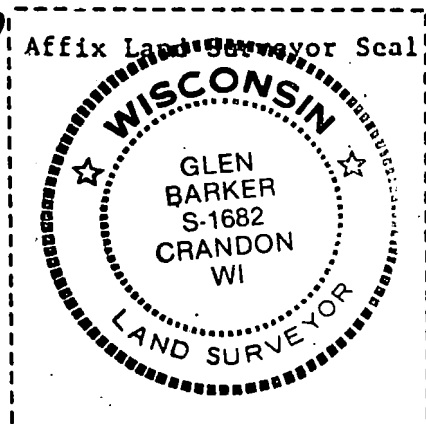
- (g&h) Was the corner reestablished through lost corner proportionate methods? If so, show the method, including the directions and distances to other public land survey corners used as evidence or used for proportioning in determining the corner location?



ALLOY CAP STAMPED:



SCALE: 1"=10'



- (i) I, Glen Barker  
(type or print name) certify that the corner location shown on this record was determined by me or under my direction and control and that this U.S. Public Land Survey Monument Record is correct and complete to the best of my knowledge and belief.

Signature

Date

12/23/83