

241591

NOV 08 2023

CORTNEY BRITTEN CLEEREMAN  
REGISTER OF DEEDS

U S PUBLIC LAND SURVEY MONUMENT RECORD

NOTE: This form is intended and designed to fulfill all requirements of Wisconsin Administrative Code, Chapter A-E 7.08 U.S. Public Land Survey Monument Record (3) (a-i)

A-E 7.08(3)(a) Identity of corner:  
SOUTHEAST CORNER SECTION 15,  
TOWNSHIP 35 NORTH,  
RANGE 12 EAST OF THE 4TH PM,  
TOWN OF NASHVILLE,  
COUNTY OF FOREST

WISCRS - FOREST COUNTY  
N: 548,252.086 USft (XXX,XXX.XXX)  
E: 820,435.883 USft (XXX,XXX.XXX)  
Datum: NAD83 (2011)  
GNSS Method RTK  
GNSS Control WISCRS VRS



The coordinate value shown has been verified by the average of two or more GPS observations at a markedly different time. Coordinates shown in parenthesis are previously published values.

A-E 7.08(3)(b)

Original Surveyor: James L. Nowlin

Date of Original Survey    Commenced:    June 26, 1865  
Completed:    July 7, 1865

Original Accessories:  
Elm    15    S 12° E    15 Links  
Sugar    12    N 36° E    12 Links

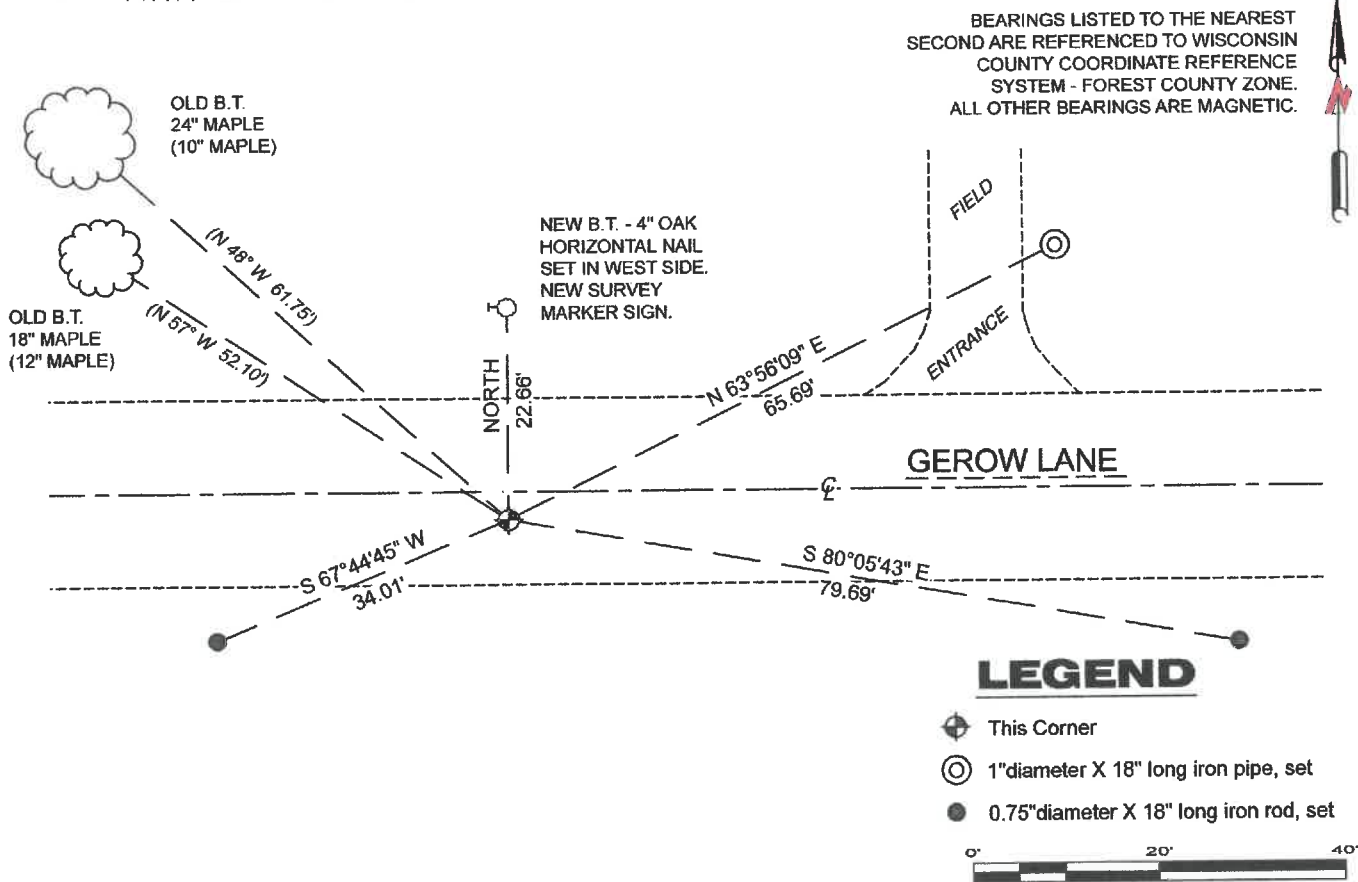
See previous Certified Land Corner Restoration - N 17 - May 19, 1983 - Surveyor 1098 - William F. Kelly - THENCE:

June 19 & 20, 2001 - Surveyor 1451 - Eugene C. Uttech - indicates this position as "found 2" alu monument" on Forest Co. Surveyor File #351214-20010620.

April - September 2007 - Cadastral Surveyor - Travis M. Hand - indicates this position as part of a "Dependent Resurvey and Subdivision of Sections" (no symbol), by the United States Department of the Interior Bureau of Land Management.

August 02, 2023 - I found a 2.5" diameter aluminum pipe monument with the cap broken off. The monument ±3 feet south of the centerline of Gerow Lane and flush with the road grade. I also found 2 of Kelly's bearing trees, and I established 4 new reference monuments as shown below.

A-E 7.08(3)(c)(d) Plan view of corner with references to at least 4 witness monuments.



A-E 7.08(3)(e) 1865 Surveyor set a post, 1983 Surveyor set an aluminum capped monument, subsequent surveyors found the same, as did I in 2023 (no cap).

A-E 7.08(3)(f) I accept this monument as a FOUND PERPETUATED LOCATION of the corner.  
A-E 7.08(3)(g)(h) This corner was not determined through lost-corner-proportionate methods.

A-E 7.08(3)(i) I, Jeffrey L. DeMuth, Professional Land Surveyor No. S-2656, hereby certify that the corner location on this record was determined by me or under my direction and control, and that this U.S. Public Land Survey Monument Record is correct and complete to the best of my knowledge, and belief.

SIGNATURE

September 14, 2023

DATE

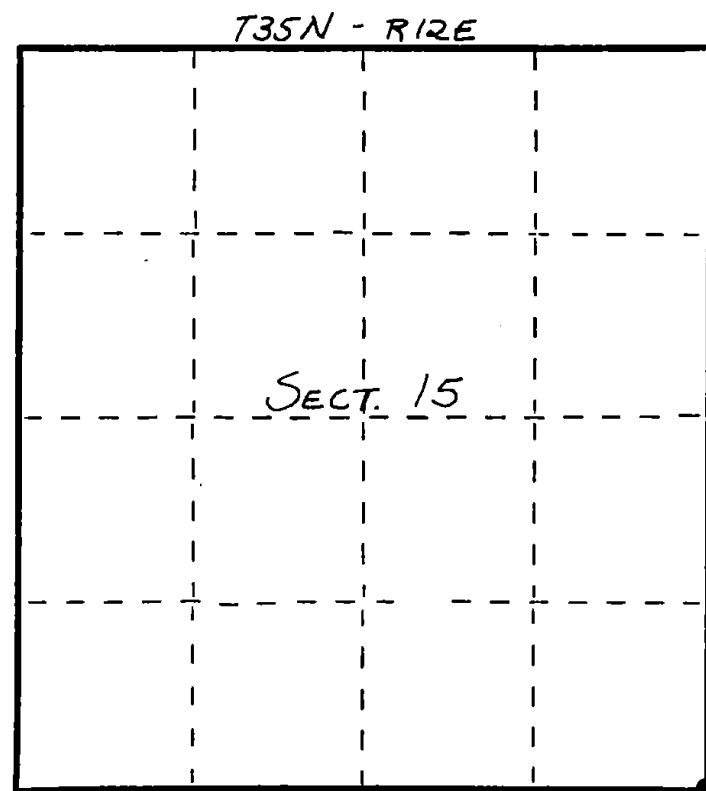


43512150000

N 17

State of Wisconsin }  
County of FOREST } ss.  
I WILLIAM F. KELLY, do hereby  
certify that on the 19<sup>th</sup> day  
of MAY, 1983, I found  
evidence of the SE  
corner of SECTION 15  
Township 35, North, Range  
12 EAST, Fourth Principal Meridian,  
as described hereon; and that from this evidence  
I established a new monument and accessories  
as described hereon to perpetuate the original  
location of this corner.

Resident witnesses:



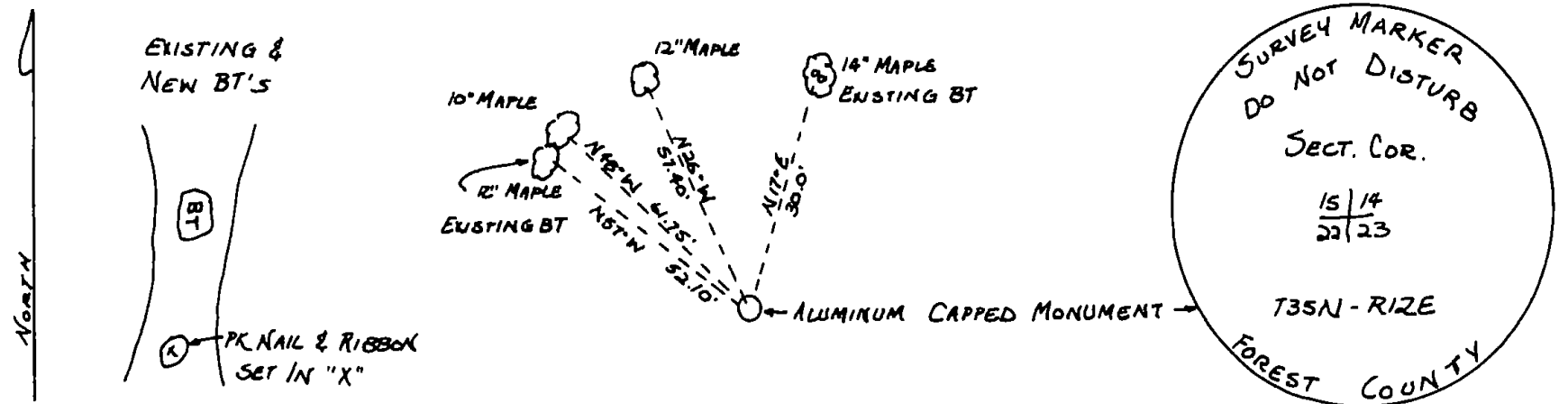
○ = Corner monument restored.

CERTIFIED LAND CORNER RESTORATION  
U.S. PUBLIC LAND SURVEY MONUMENT RECORD

History of original corner establishment:  
ORIGINAL CORNER ESTABLISHED BY  
JAMES L. NOWLIN IN JUNE-JULY, 1865.

Description of corner evidence found:  
REPLACED 1" IRON PIPE WITH  
ALUMINUM CAPPED MONUMENT.  
2 EXISTING BT'S. SET 1" IRON  
PIPE NEXT TO MON., SET STONE PILE  
AROUND MON.

Description of monument and accessories I established to perpetuate the original location of this corner.



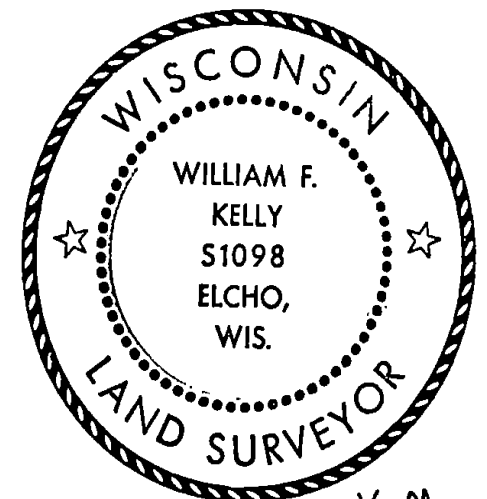
Dated at ELCHO, Wis., this 19<sup>th</sup> day of MAY, 1983.

Signature William F. Kelly Title LANGLADE COUNTY SURVEYOR Registration No. 1098  
(County Surveyor, Registered Land Surveyor, or other duly authorized official)

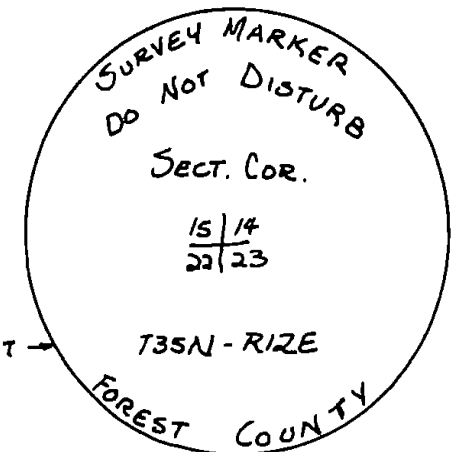
Office of Register of Deeds, County of Forest, I hereby certify that the within  
instrument was filed in this office for record on the 27th day of May, 1983  
at 11:00 o'clock A. M.

Eugene Stutzman  
(Register of Deeds)  
By \_\_\_\_\_ Deputy

Index No. N17  
11-17



William F. Kelly  
5-24-83



DOCUMENT NO.  
123172

4351215000